



The Boundary

1389 Peachtree Street

Space availability summary

WeWork @ 1389 Peachtree Street
Atlanta, GA

wework

[VIEW VIRTUAL TOUR](#)

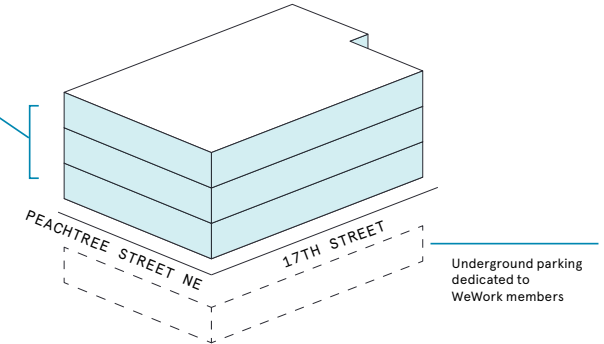
3rd Floor 16,589 RSF

2nd Floor 16,508 RSF

1st Floor 11,191 RSF

44,288

TOTAL WEWORK RSF



The Boundary

At a glance

Workspaces designed for productivity and creativity with flexible size & term

Dedicated, private offices available from 39 to 8,399 RSF

Move-in ready offices furnished & wired

3

TOTAL BUILDING FLOORS

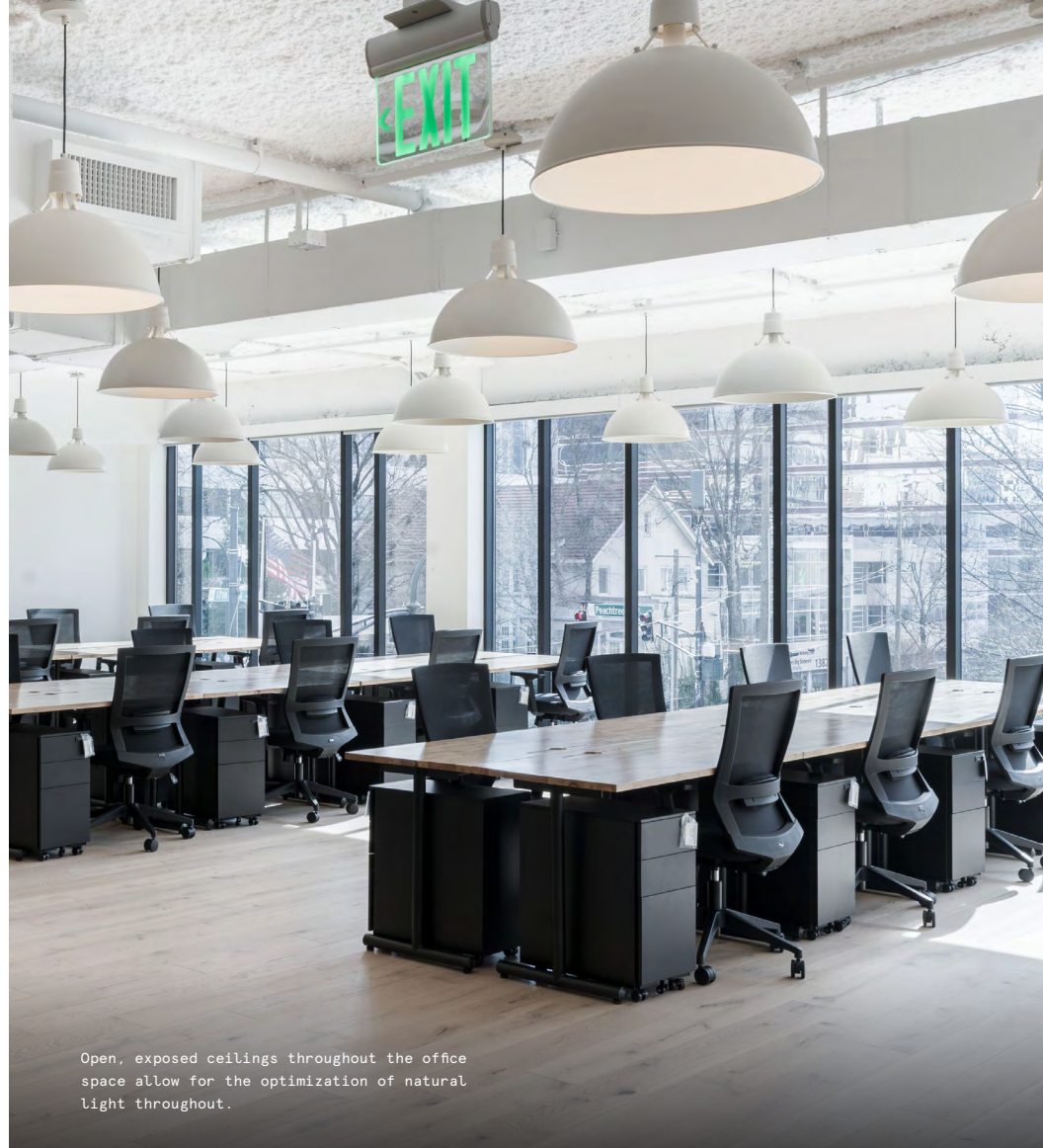
41,582

TOTAL BUILDING SQ FT

All dimensions are approximate and subject to variances. It is your obligation to independently verify the particulars of the property. WeWork reserves the right to make changes.



The Boundary is delicately decorated with custom furniture conceived through collaborations with high-end designers.



Open, exposed ceilings throughout the office space allow for the optimization of natural light throughout.

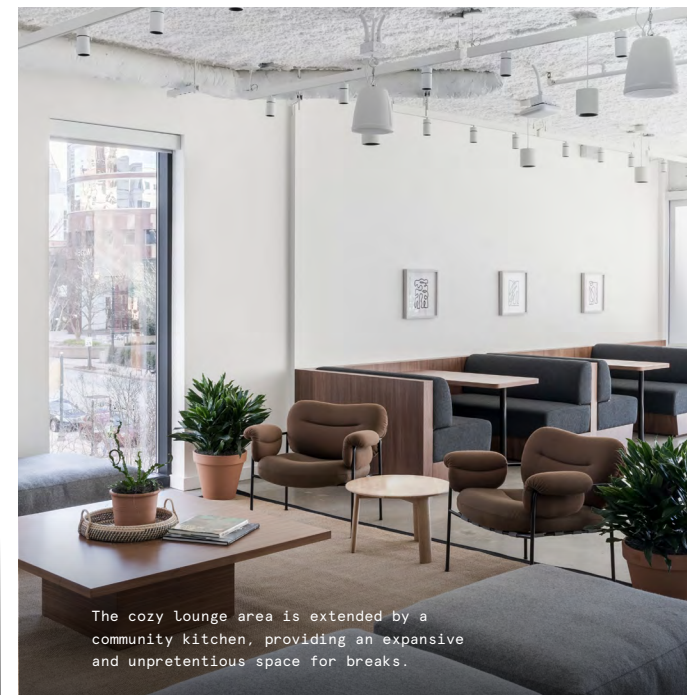
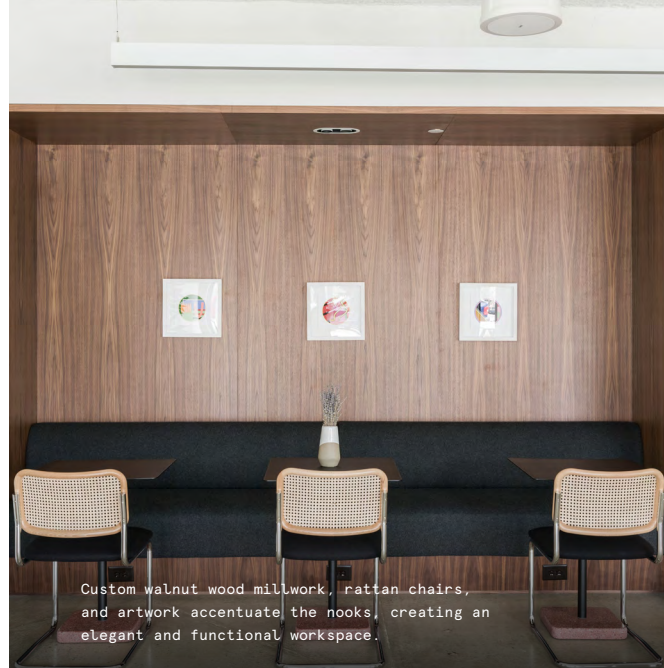
Energetic, visionary, and inventive

Located in the Arts District of Midtown Atlanta, The Boundary is situated in its namesake mixed-use campus at the prominent intersection of Peachtree and 17th Street. Redeveloped and reimagined, the three-building complex serves as an ultra-modern base for a thriving community. The dynamic 40,000 square foot office space shares a home with restaurants, street-front retail, and a linear park. Offering unparalleled convenience to commuters, the location is set near the Arts Center MARTA Station and features a dedicated parking area with direct access to the office suites.

An exquisite workspace with a progressive mindset

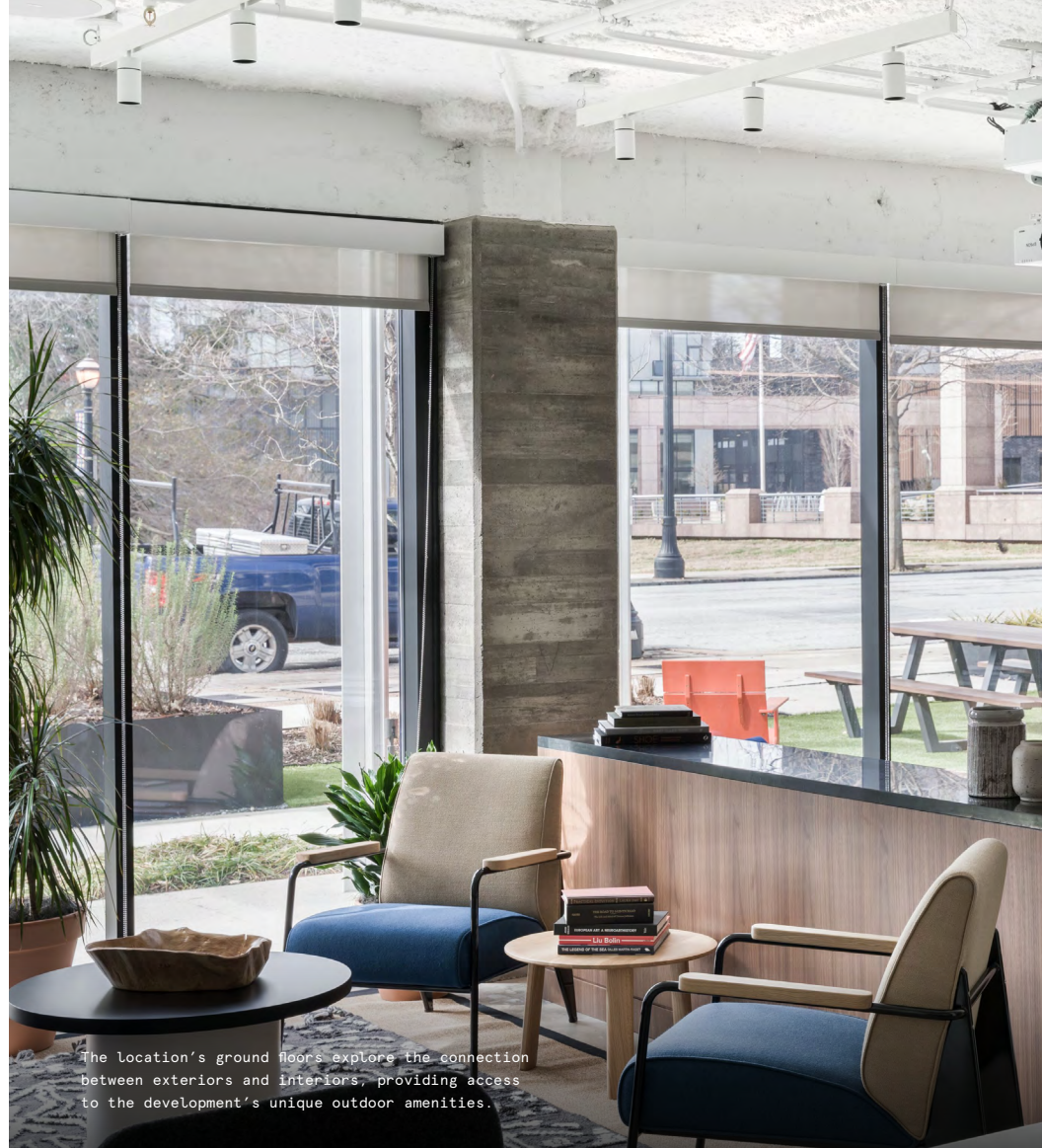
The Boundary illustrates a delicate balance of elegance and energy, with references to the architect's future-forward design style featured throughout.

- Walnut wood is used abundantly throughout custom millwork and paneling, enhancing the location's unpretentious, timeless vibe
- The location integrates both elevated and modern materials, featuring existing concrete floors and exposed ceilings unified by marble tables and polished stainless steel
- A mix of high-end custom furniture, natural fiber rugs, and rattan chairs are accented by bright, invigorating graphic prints, patterns, and textiles
- Soffits within the wood grid of the elevator lobby act as an additional lighting feature





High ceilings, floor-to-ceiling windows, and sleek walnut millwork seamlessly enhance the bright, spacious kitchen and pantry.



The location's ground floors explore the connection between exteriors and interiors, providing access to the development's unique outdoor amenities.

On-site amenities

- High-speed Wi-Fi
- Meeting rooms
- On-site staff
- Unique common areas
- Phone booths
- Business-class printers
- Professional and social events
- Parking
- Service dogs permitted
- Outdoor space
- Bike storage
- New parent's room
- Wellness room
- Event space
- Electric vehicle charging stations
- Dog park on-site

Building specifications



Building history

Redeveloped by
Parkside Partners in 2019



Security

24/7 security



HVAC

Monday – Friday: 8am–8pm

Saturday: 10am–3pm

VAVs and FPB with electric reheat coil



Building size

40,000 SF



Elevators

1 passenger elevator



Fire strategy

Fully-sprinklered building



Ceiling heights

10 foot 5 inches



Electrical capacity

Min 6w/sc

A neighborhood full of culture and creativity

Conveniently located in the Arts District of Midtown Atlanta, The Boundary is easily accessible by bus with nearby MARTA stops, on-site parking for both cars and bikes, and easy access to the highway I-75. Surrounded by the city's top-rated art institutions, including the notable Savannah College of Arts and Design (SCAD), The High Museum of Art, and the Puppetry Arts Museum, the location bursts with creative spirit at all times. The city's various popular urban markets, eateries, and bars are within walking distance, including Whole Foods, Nan Thai Fine Dining, Colony Square's Politan Row Food Hall, iPic, and Atlantic Station's numerous dining and entertainment options.

Distance to WeWork

| | | | |
|--|---|---------|--------|
| Arts Center MARTA Station |  | Walking | 6 min |
| Colony Square |  | Walking | 8 min |
| Piedmont Park |  | Walking | 17 min |
| Atlantic Station |  | Driving | 3 min |
| Hartsfield-Jackson Atlanta International Airport |  | MARTA | 34 min |



1st Floor

11,191 RSF






3

MEETING ROOM(S)

1

SHARED WORKSPACE(S)

LEGEND

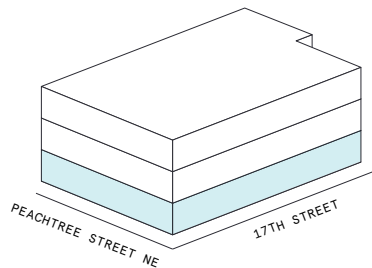
-  MEETING ROOM
-  SHARED WORKSPACE
-  DEDICATED SPACE

PEACHTREE STREET NE



NO NAME STREET

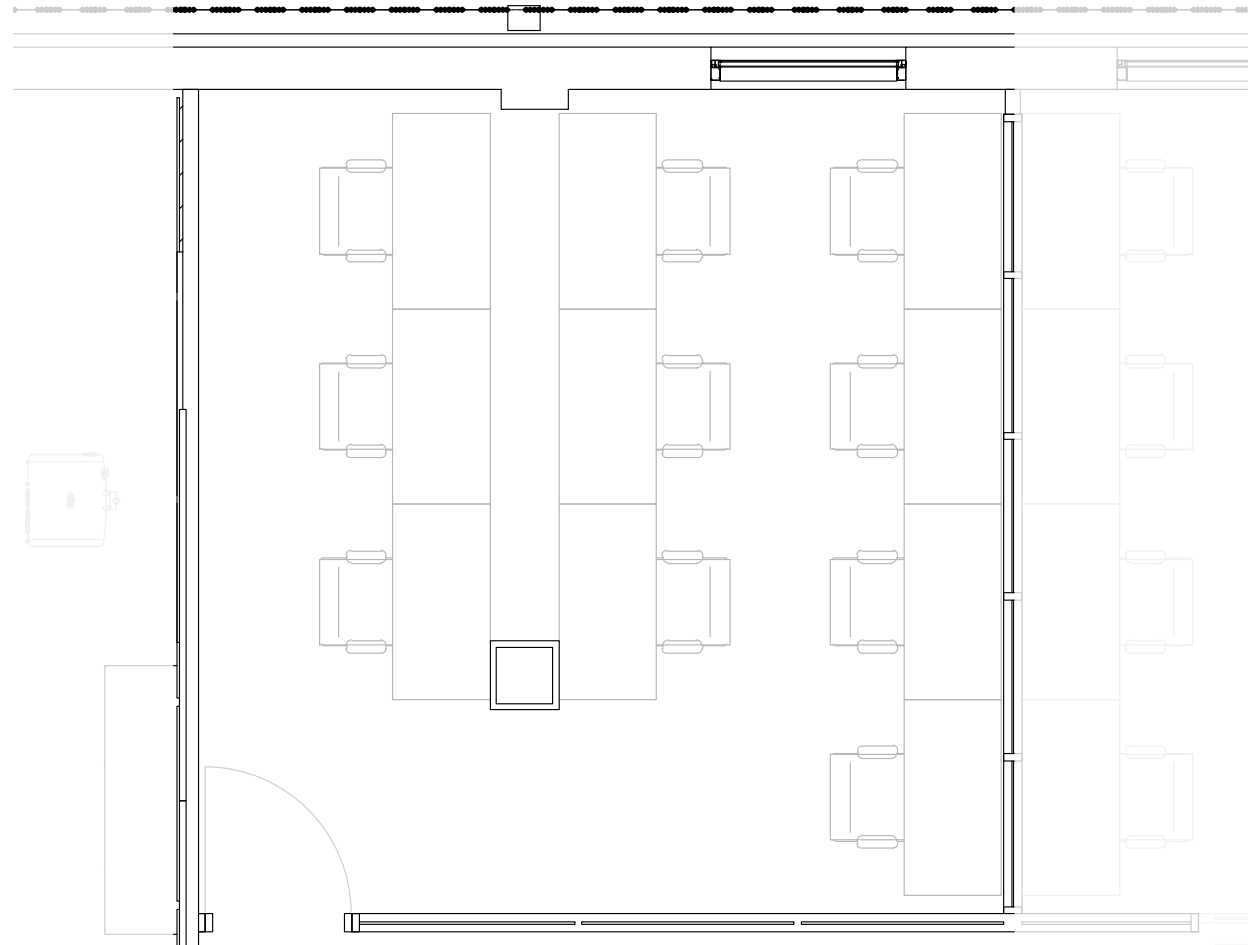
17TH STREET



Suite 100

1st Floor

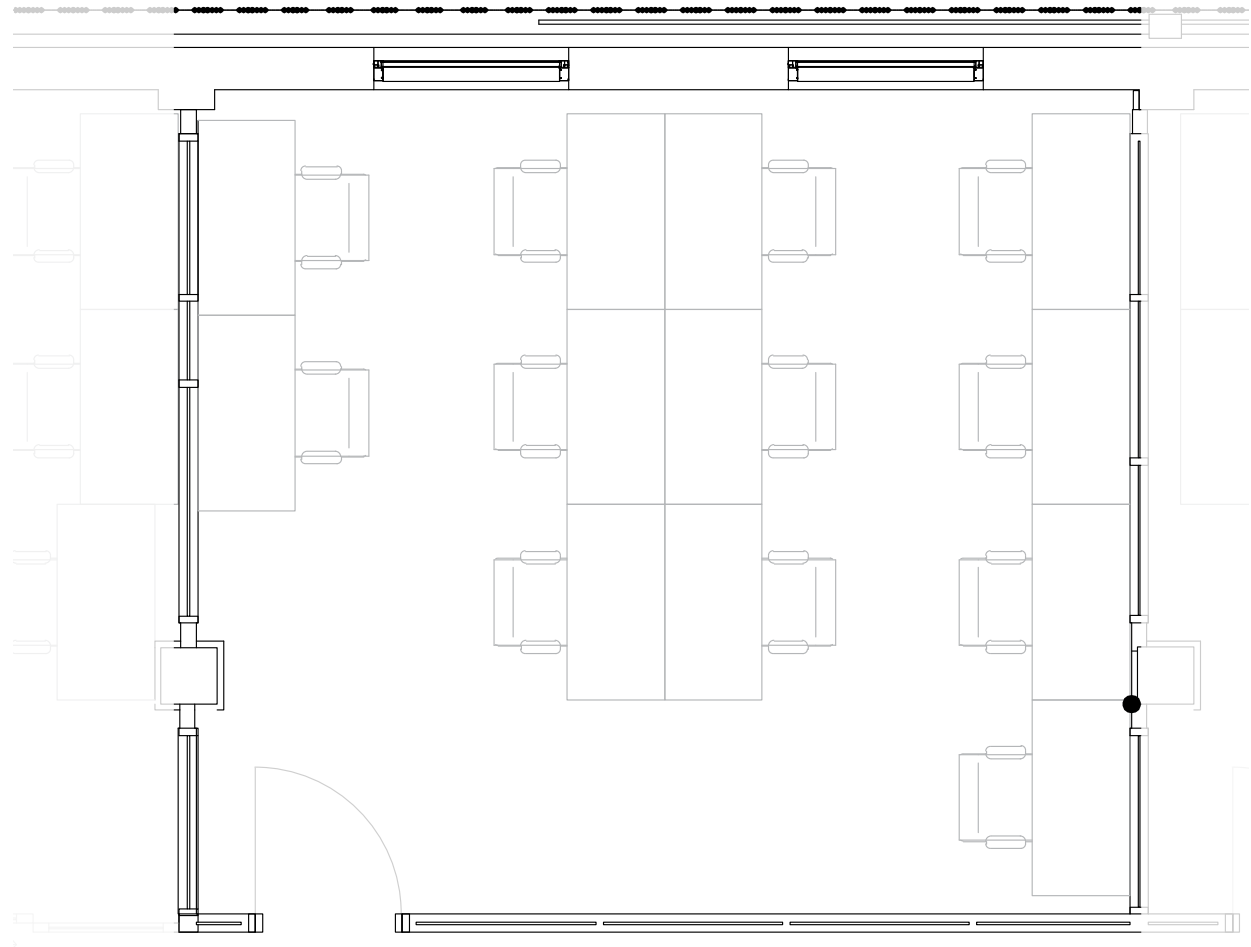
547 RSF
RENTABLE AREA



Suite 105

1st Floor

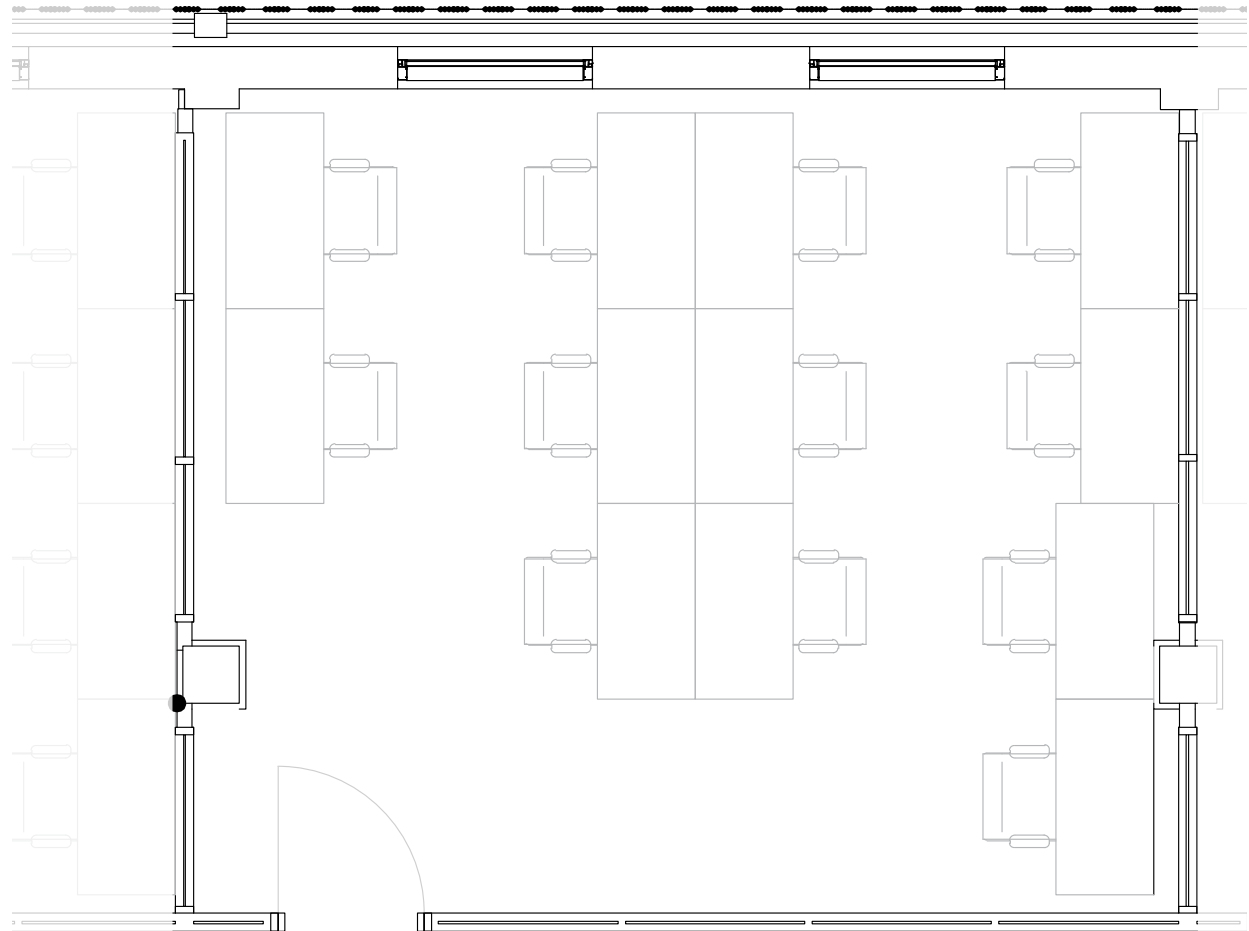
639 RSF
RENTABLE AREA



Suite 106

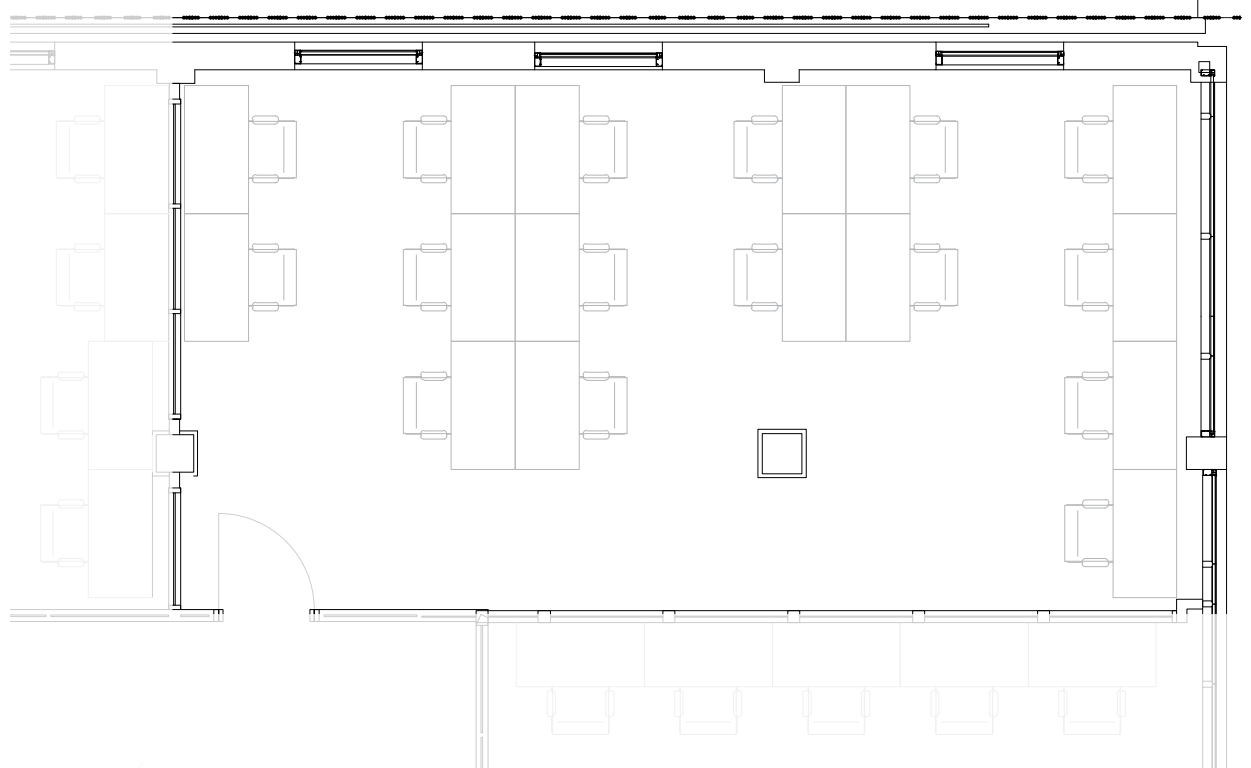
1st Floor

670 RSF
RENTABLE AREA



Suite 108

1st Floor



1,073 RSF
RENTABLE AREA



Suite 109

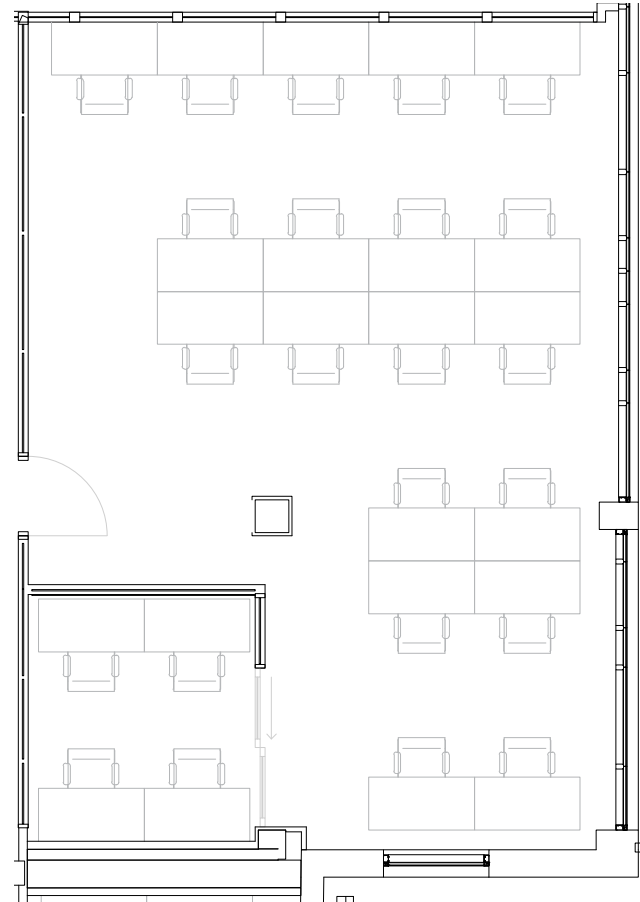
1st Floor

1

PRIVATE OFFICE(S)

1,395 RSF

RENTABLE AREA



Suite 117

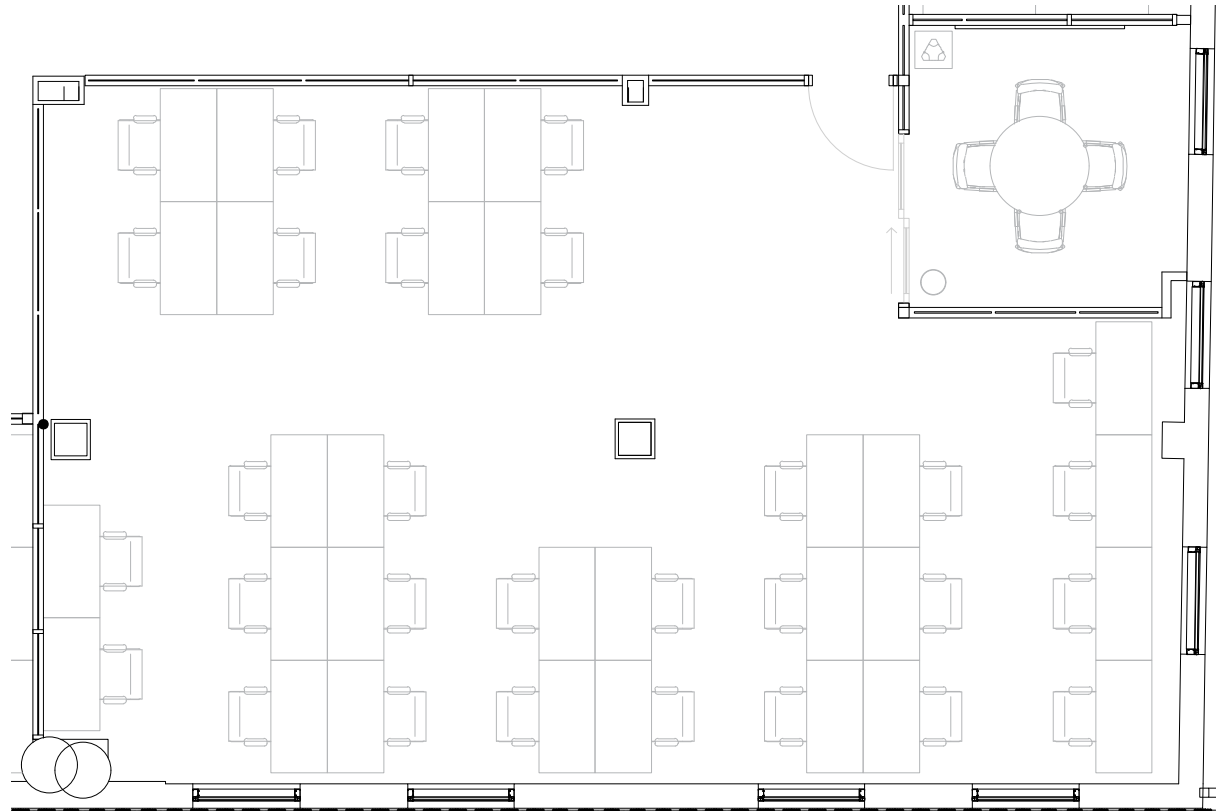
1st Floor

1

PRIVATE OFFICE(S)

2,025 RSF

RENTABLE AREA



2nd Floor

16,508 RSF






2

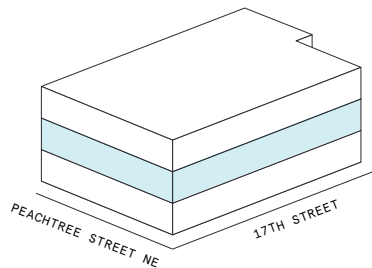
MEETING ROOM(S)

1

SHARED WORKSPACE(S)

LEGEND

-  MEETING ROOM
-  SHARED WORKSPACE
-  DEDICATED SPACE



Suite W101

2nd Floor

6

PRIVATE OFFICE(S)

8,109 RSF

RENTABLE AREA



Suite W102

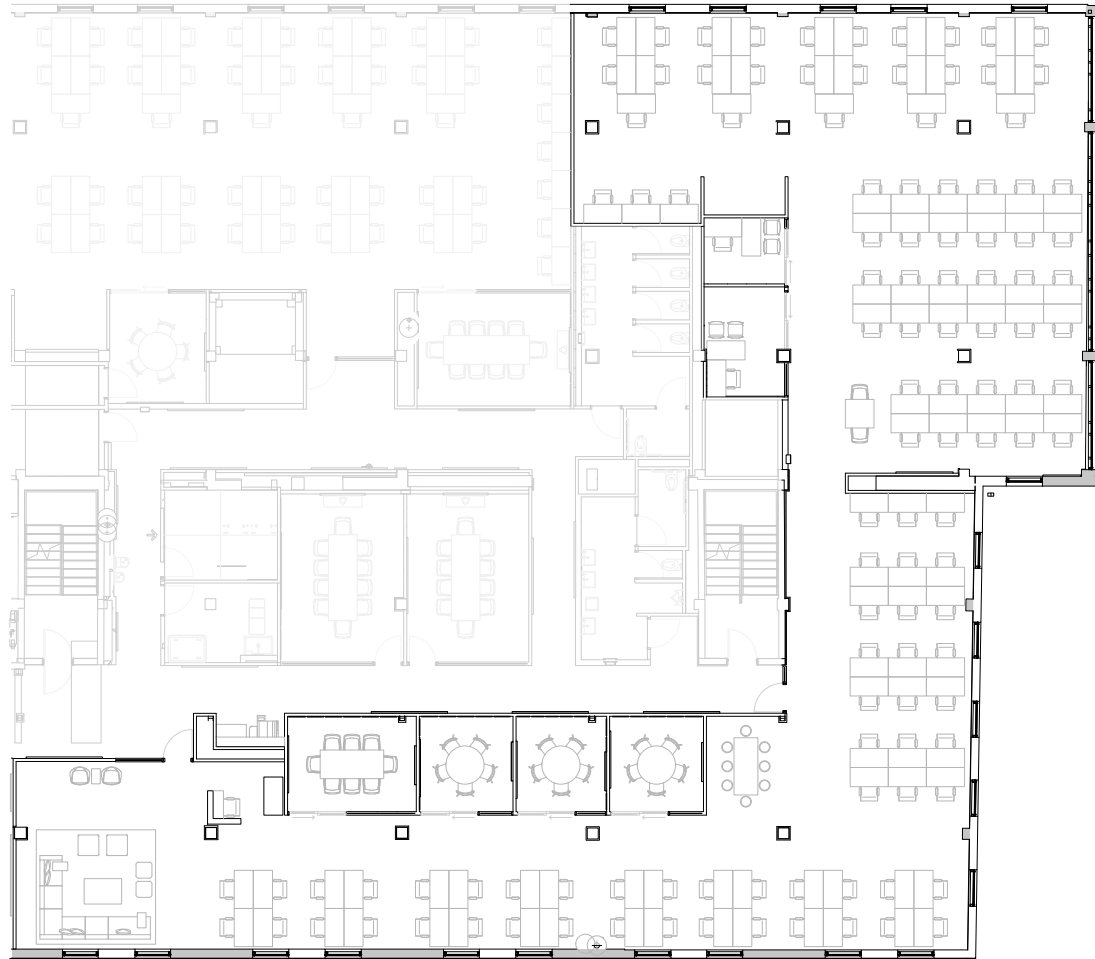
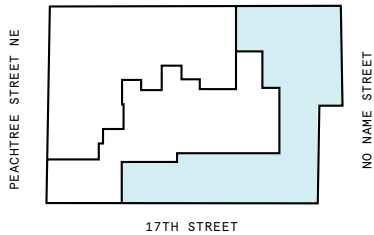
2nd Floor

6

PRIVATE OFFICE(S)

8,399 RSF

RENTABLE AREA



3rd Floor

16,589 RSF






2

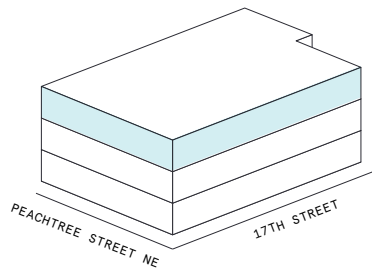
MEETING ROOM(S)

1

SHARED WORKSPACE(S)

LEGEND

-  MEETING ROOM
-  SHARED WORKSPACE
-  DEDICATED SPACE



Suite W101

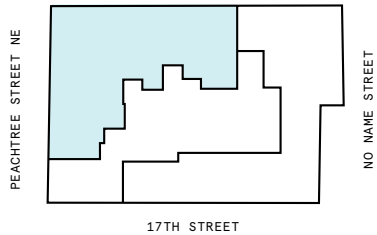
3rd Floor

6

PRIVATE OFFICE(S)

8,198 RSF

RENTABLE AREA



Suite W102

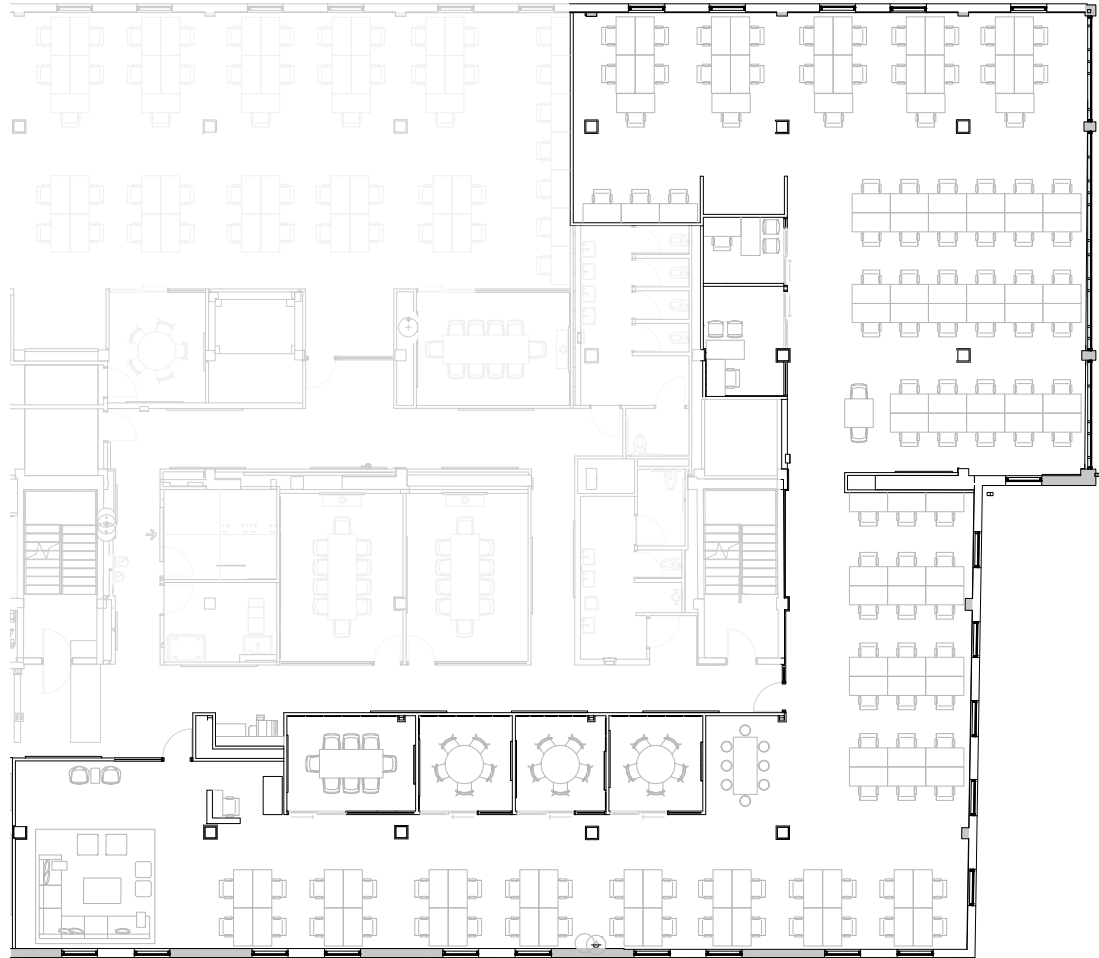
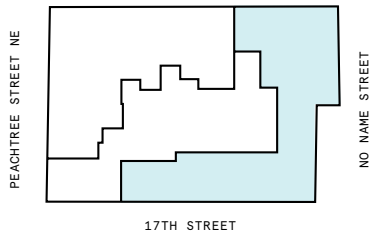
3rd Floor

6

PRIVATE OFFICE(S)

8,391 RSF

RENTABLE AREA



Contact

Complete the form [linked here](#) to book a tour or connect with one of our team members.

