



# Terminus 100

3280 Peachtree Road

Space  
availability  
summary

WeWork @ 3280 Peachtree Road  
Atlanta, GA

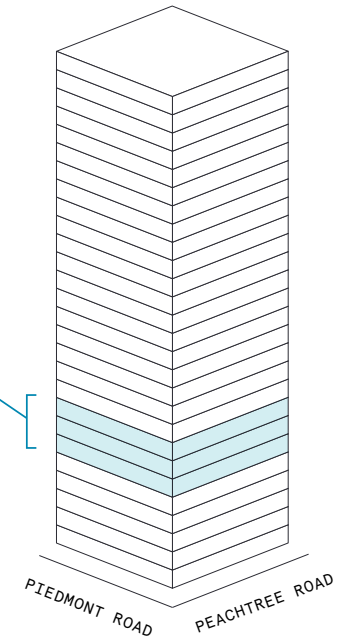
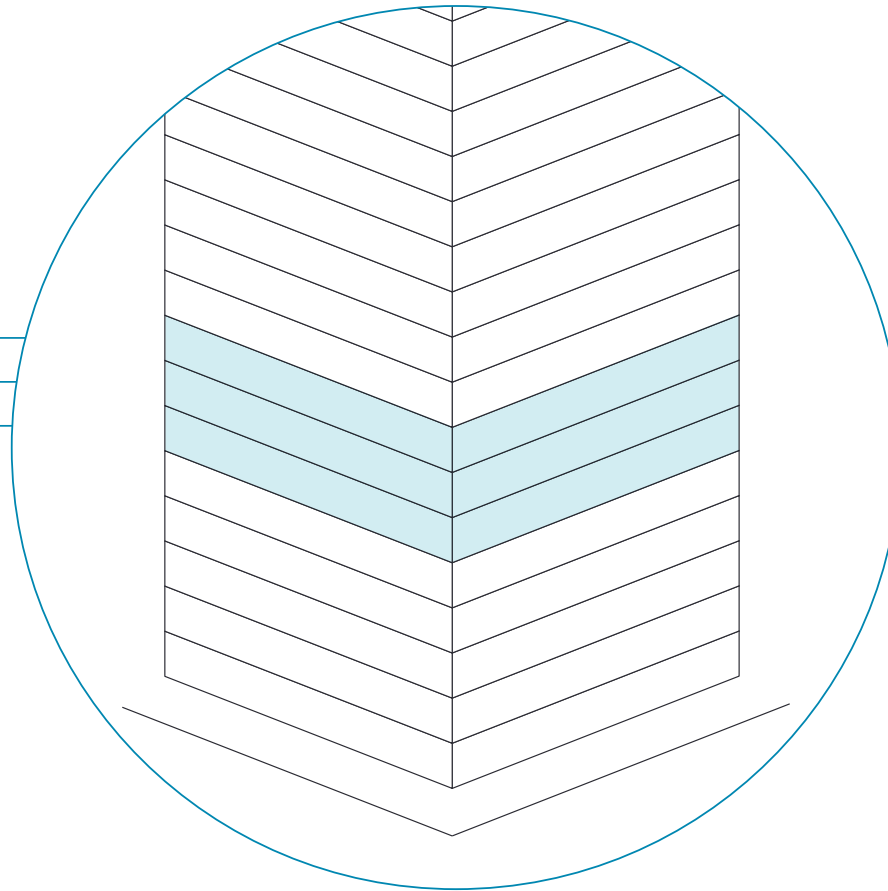
**wework**

[VIEW VIRTUAL TOUR](#)

8th Floor 26,051 RSF  
7th Floor 20,459 RSF  
6th Floor 24,994 RSF

**71,505**

TOTAL WEWORK RSF



## Terminus 100

At a glance

Workspaces designed for productivity and creativity with flexible size & term

Dedicated, private offices available from 35 to 8,855 RSF

Move-in ready offices furnished & wired

**27**

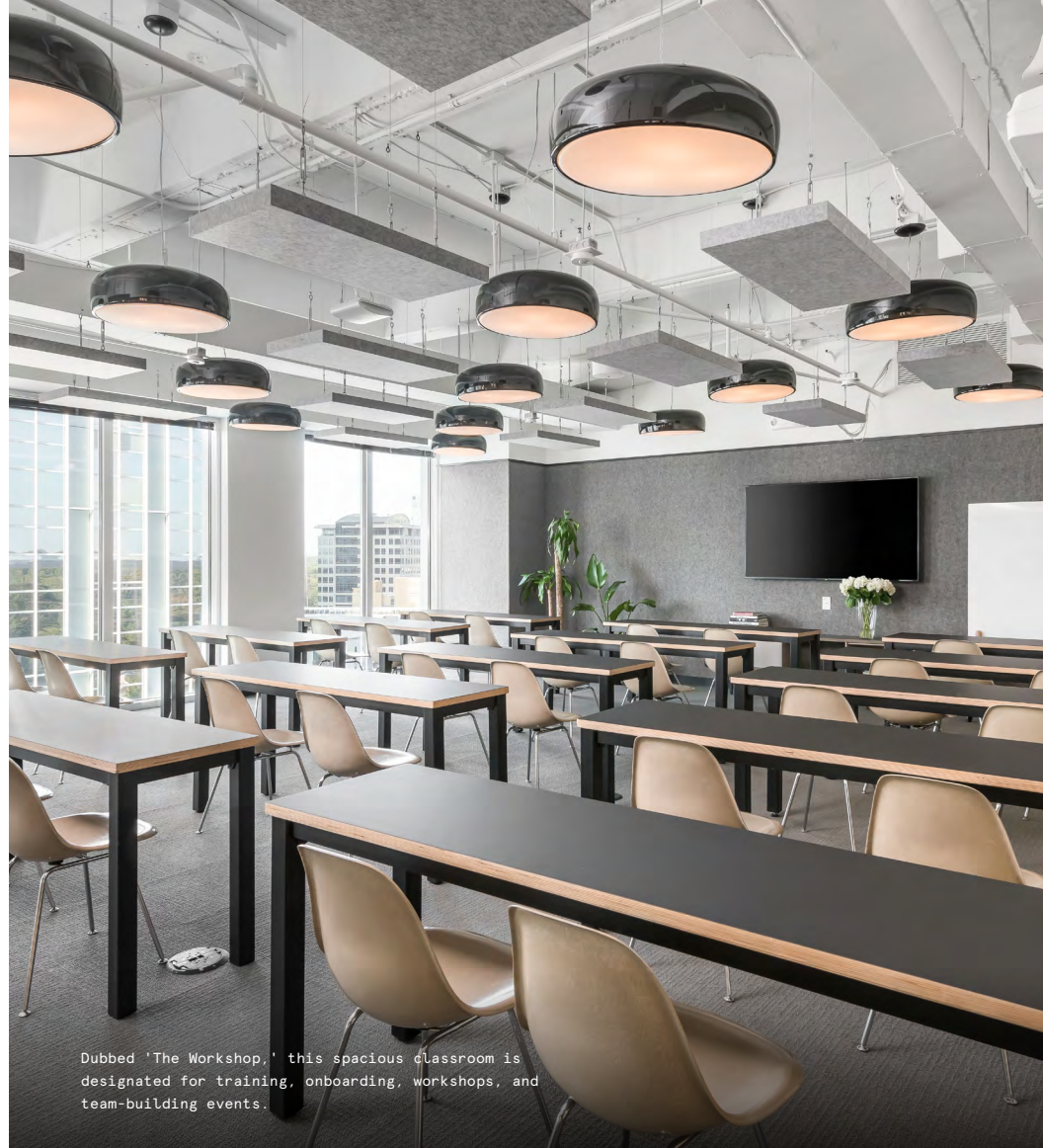
TOTAL BUILDING FLOORS

**656,000**

TOTAL BUILDING SQ FT

All dimensions are approximate and subject to variances. It is your obligation to independently verify the particulars of the property. WeWork reserves the right to make changes.





## Authentic, upscale, and exclusive

---

Located in Buckhead, one of the most central business districts in metro Atlanta, the Class A, 27-story high-rise Terminus 100 is part of the namesake business and residential complex composed of two other striking towers. WeWork's flexible workspace spreads across its three floors, featuring high-ceilings, uninterrupted spaces, and vast windows receiving plenty of unobstructed natural daylight. The exquisite tower has been conceived with multiple entryways, courtyards, and loft-style floors, and has nearby amenities such as a luxury spa, retail options, fine dining spots, bars, and coffee shops.



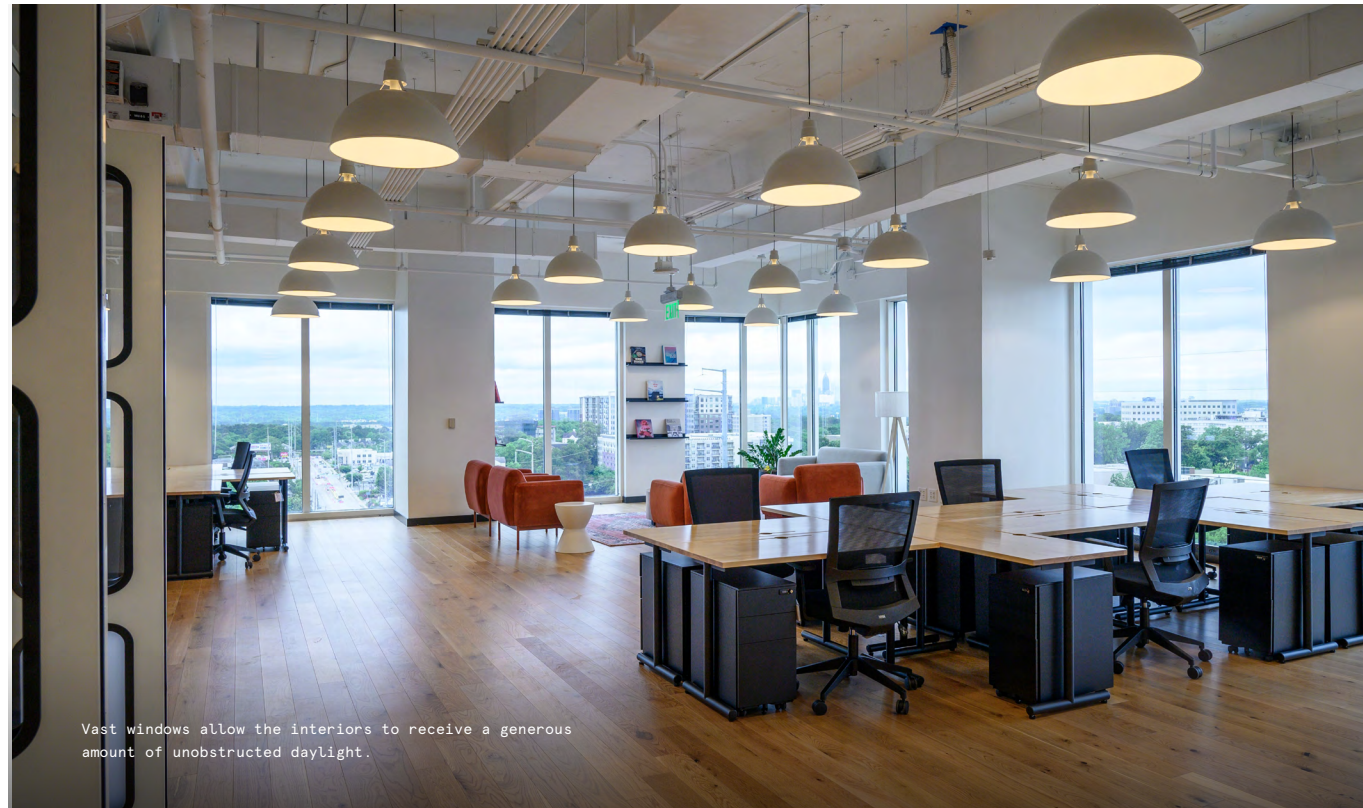
# A refined, amenity-driven workspace

Radiating an authentic sophistication through the use of natural materials, warm colors, and plants, WeWork's location at Terminus 100 salutes the easy comfort of distinct living.

- A calm, sophisticated color palette of soft pink, beige, and brown combine with light-colored wood and natural materials, conveying a relaxing and welcoming atmosphere
- The interiors are punctuated with several translucent elements such as perforated metal and patterned acrylic, allowing the light to travel evenly throughout the space
- The layout of the corridors and walls organically provide spaces for various sizes of built-in nooks



Terminus 100 illustrates a community-driven, yet upscale approach through a sophisticated color scheme, light-colored wood, and other natural materials.



Vast windows allow the interiors to receive a generous amount of unobstructed daylight.





## On-site amenities

---

- High-speed Wi-Fi
- Meeting rooms
- On-site staff
- Unique common areas
- Phone booths
- Stocked kitchens
- Business-class printers
- Professional and social events
- Parking
- Bike storage
- New parent's room
- Wellness room
- Event space
- On-site restaurants
- Recreational games
- Electric vehicle charging stations

# Building specifications

---



## Building history

---

Built in 2007  
by Cousins



## Security

---

24/7 onsite security



## HVAC

---

Monday – Friday: 8am–6pm

Saturday: 9am–1pm

On floor AHUs, VAV operation with fan powered boxes with electric heat to serve exterior zones, single duct shut-off boxes to serve interior zones



## Building size

---

27 stories

656,000 SF



## Elevators

---

10 passenger elevators



## Fire strategy

---

Fully-sprinklered floors



## Ceiling heights

---

13 foot 5 inches



## Certifications

---

LEED Silver Certified



## Electrical capacity

---






8.8W/scf  
(includes supplemental HVAC)

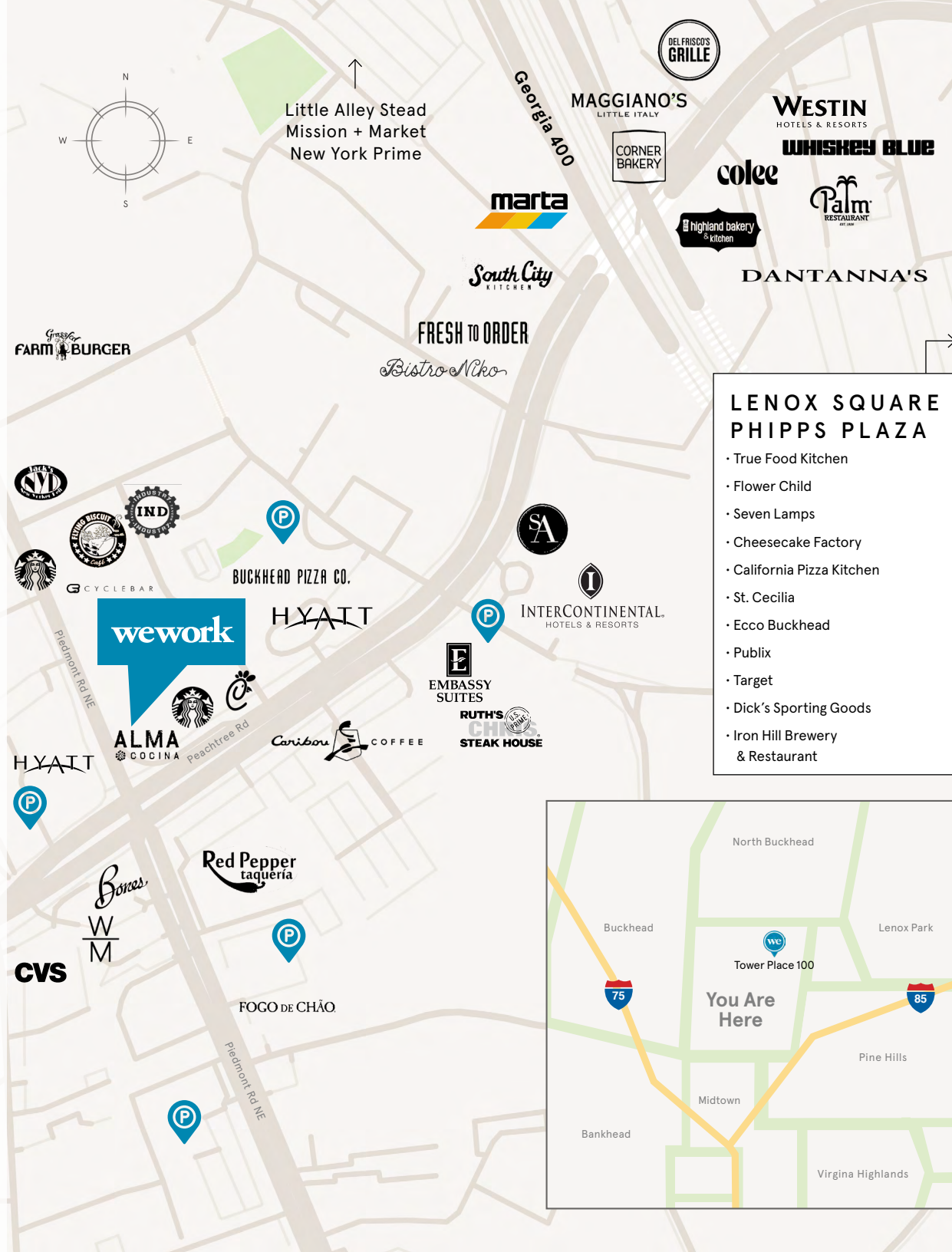


# A sprawling business-set in the heart of Buckhead Atlanta

Known for its luxury malls, boutiques, and lively social scenes, Buckhead shines out as a bustling residential and mixed-use development area in Atlanta. Just within a few blocks of multiple MARTA stations, the Buckhead Loop, and with easy access to the highway GA 400, Terminus 100 is conveniently accessible to various forms of transportation. The affluent Buckhead area consists of over 40 premier residential communities, harmonizing the practicality of urban living with the much-sought-after tranquility of suburban lifestyle. The lively neighborhood is home to nature retreats such as the PATH400 Greenway Trails and is surrounded by various top-notch restaurants, cafes, bars, entertainment, and upscale retail.

## Distance to WeWork

Buckhead MARTA Station	 Walking	7 min
PATH400 Greenway Entrance	 Walking	13 min
Phipps Plaza	 Driving	4 min
Lenox Square	 Driving	5 min
GA-400	 Driving	8 min



# 6th Floor

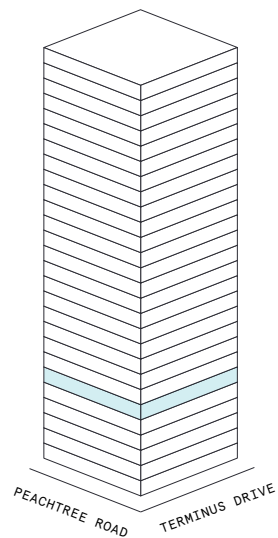
24,994 RSF

10  
MEETING ROOM(S)

1  
SHARED WORKSPACE(S)

## LEGEND

- MEETING ROOM
- SHARED WORKSPACE
- DEDICATED SPACE



All dimensions are approximate and subject to variances. It is your obligation to independently verify the particulars of the property. WeWork reserves the right to make changes.

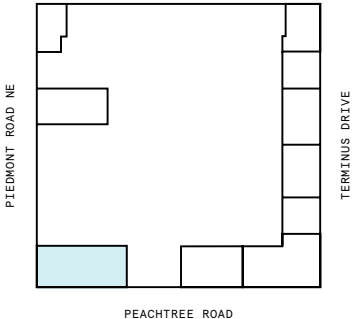
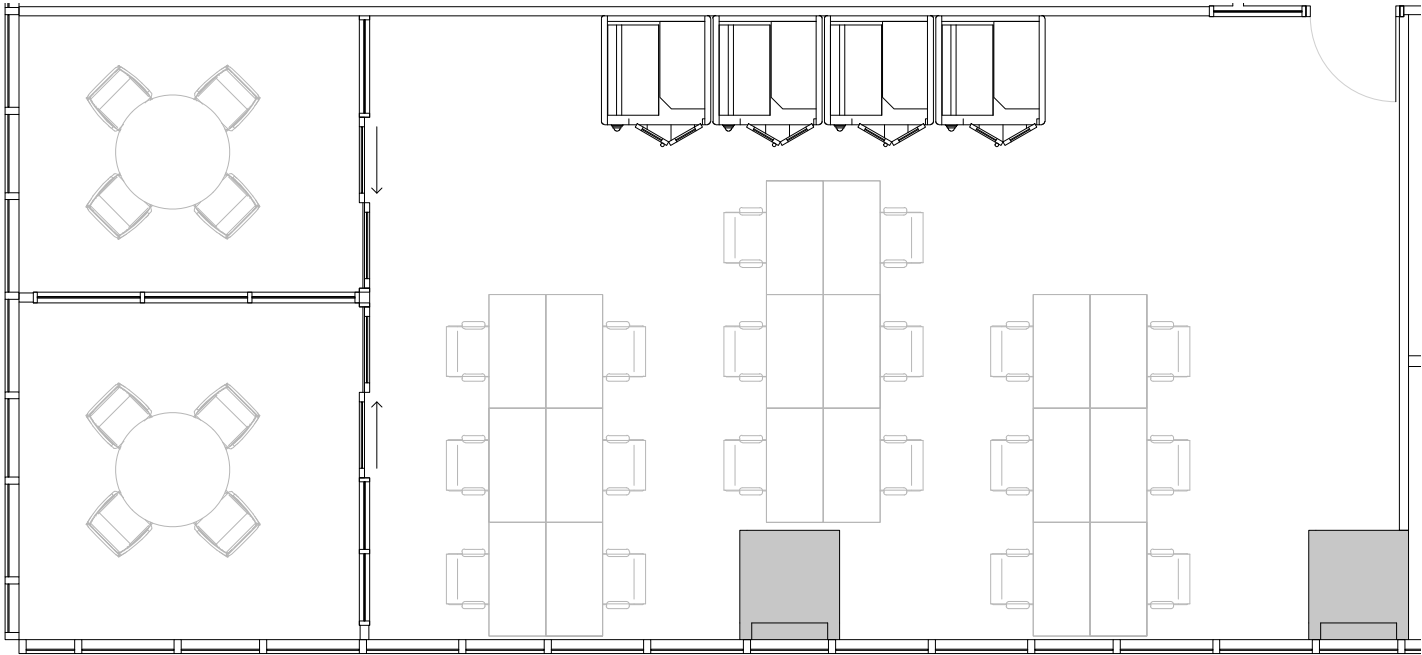


# Suite 101

6th Floor

2  
PRIVATE OFFICE(S)

3,469 RSF  
RENTABLE AREA

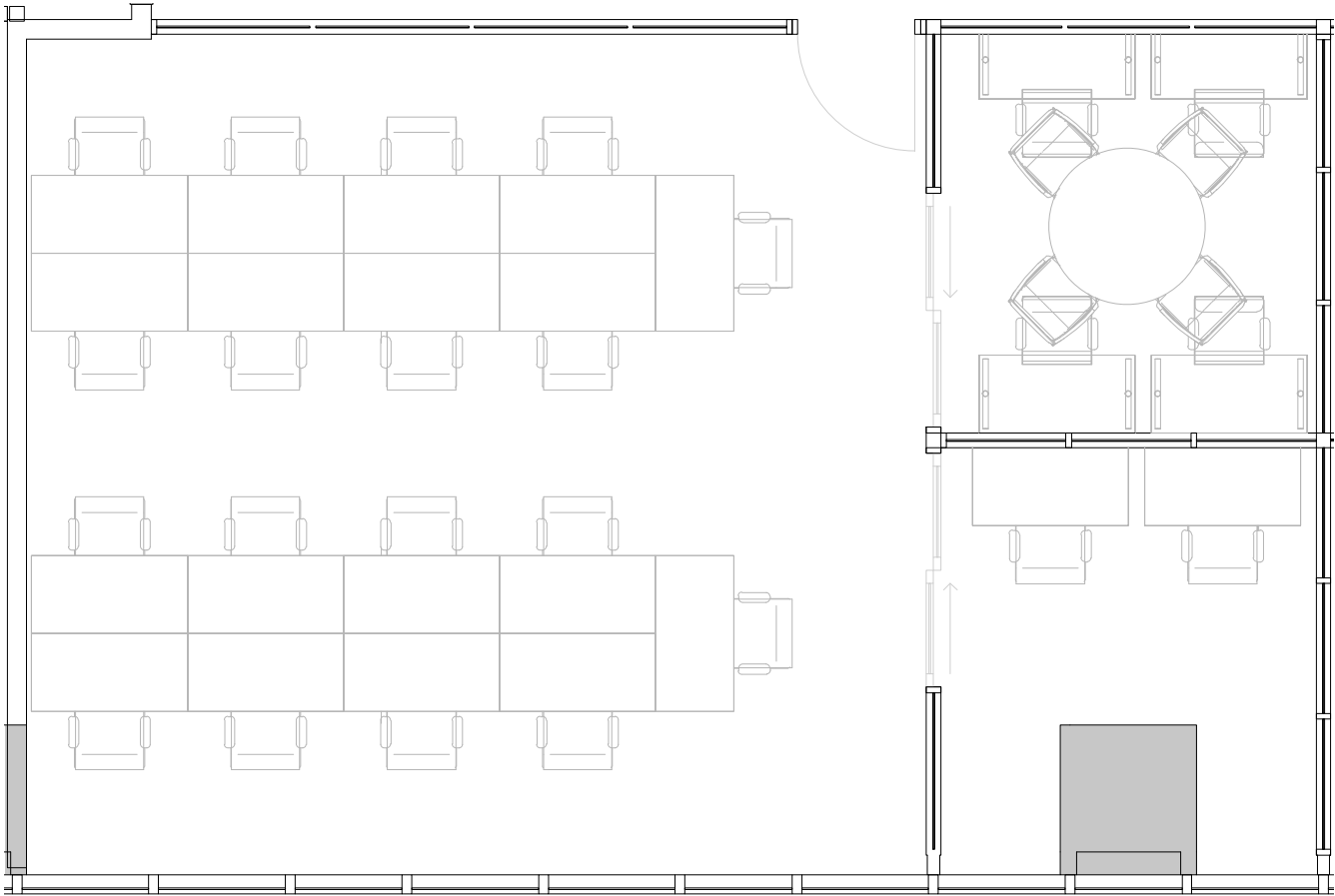
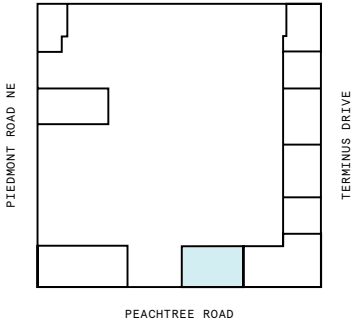


# Suite 103

6th Floor

2  
PRIVATE OFFICE(S)

1,526 RSF  
RENTABLE AREA



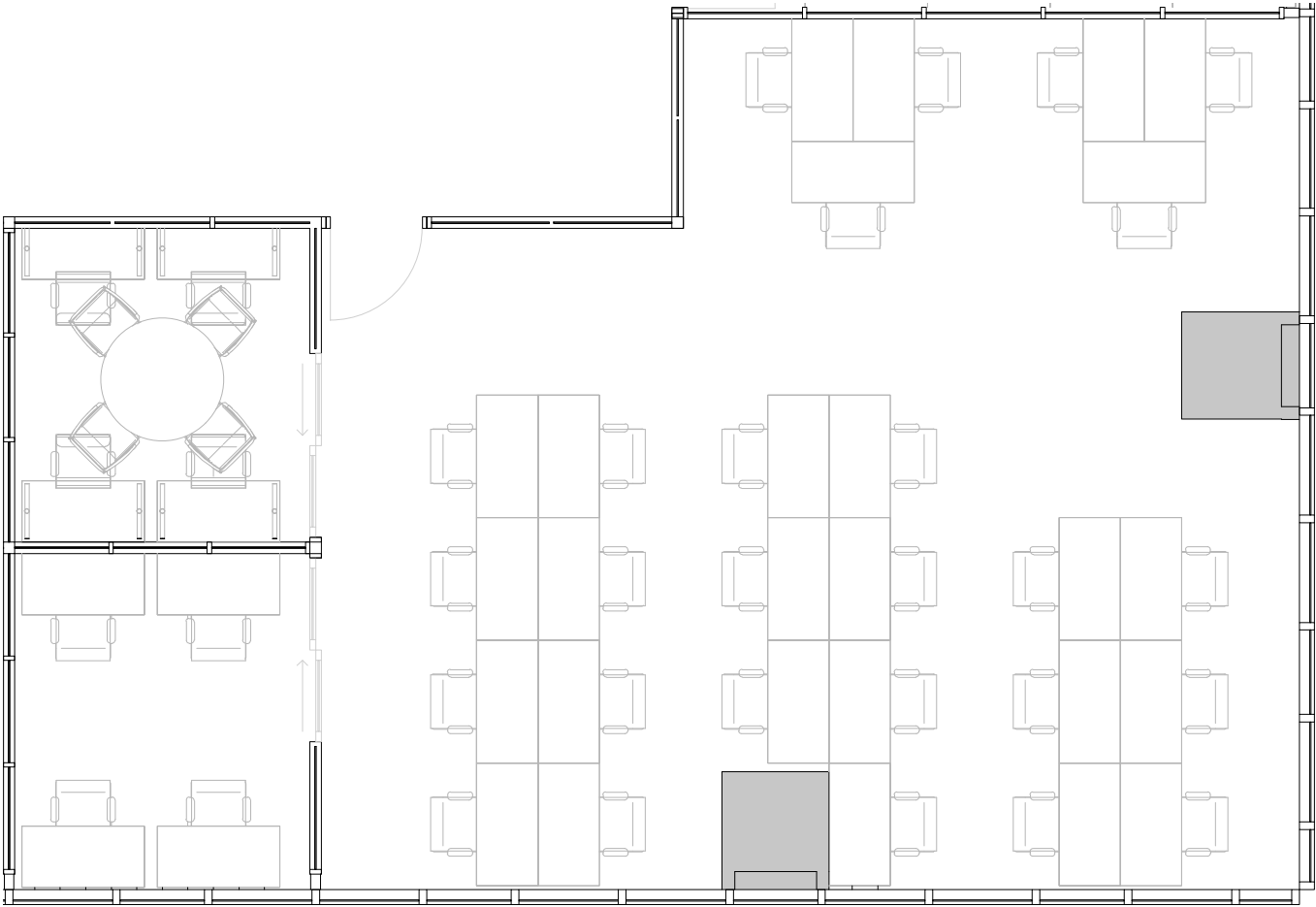
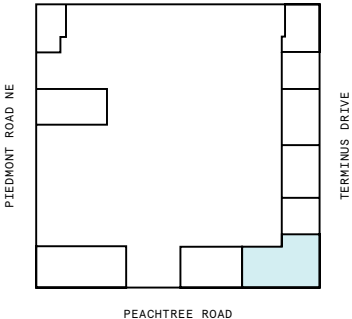


# Suite 106

6th Floor

2  
PRIVATE OFFICE(S)

2,222 RSF  
RENTABLE AREA

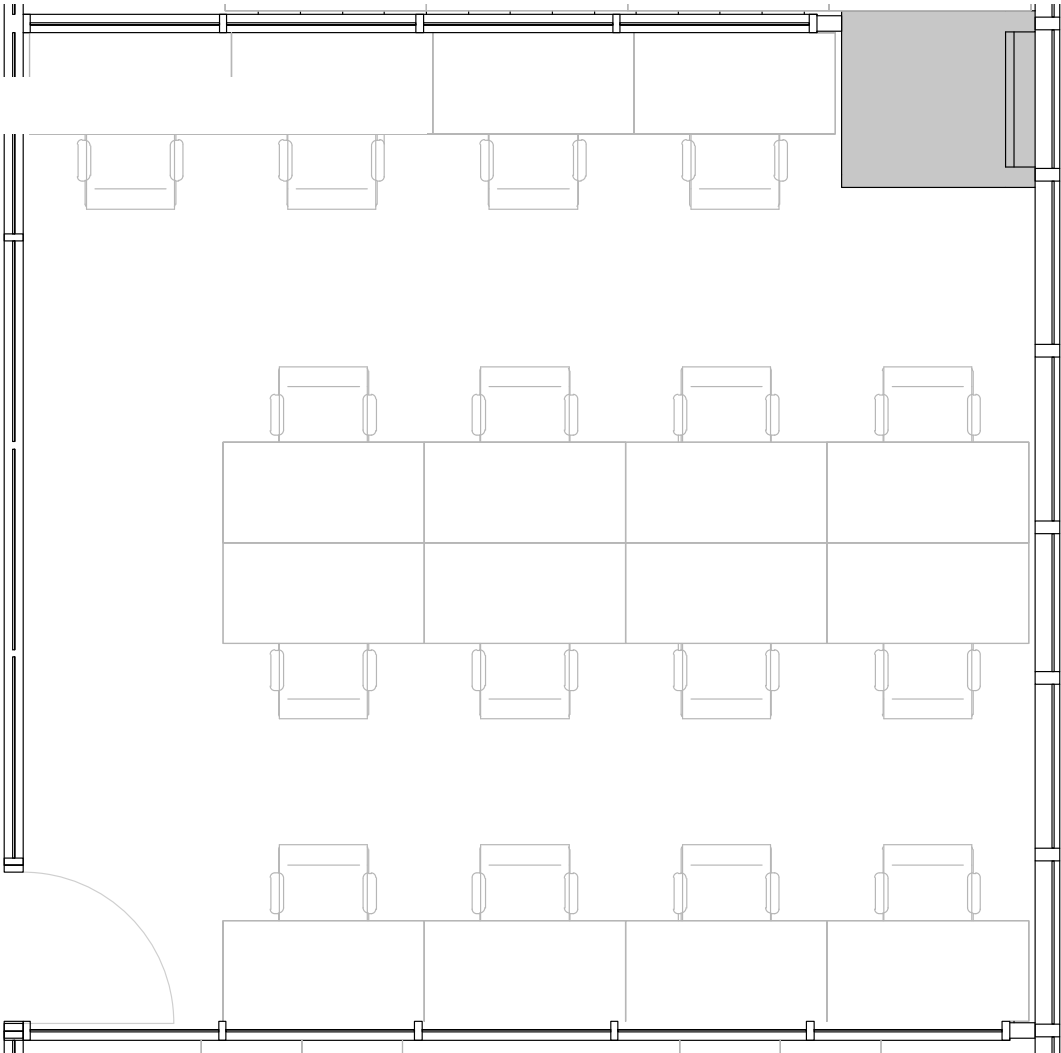
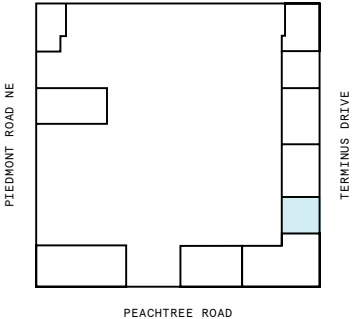


# Suite 107

6th Floor

2  
PRIVATE OFFICE(S)

839 RSF  
RENTABLE AREA





# Suite 111

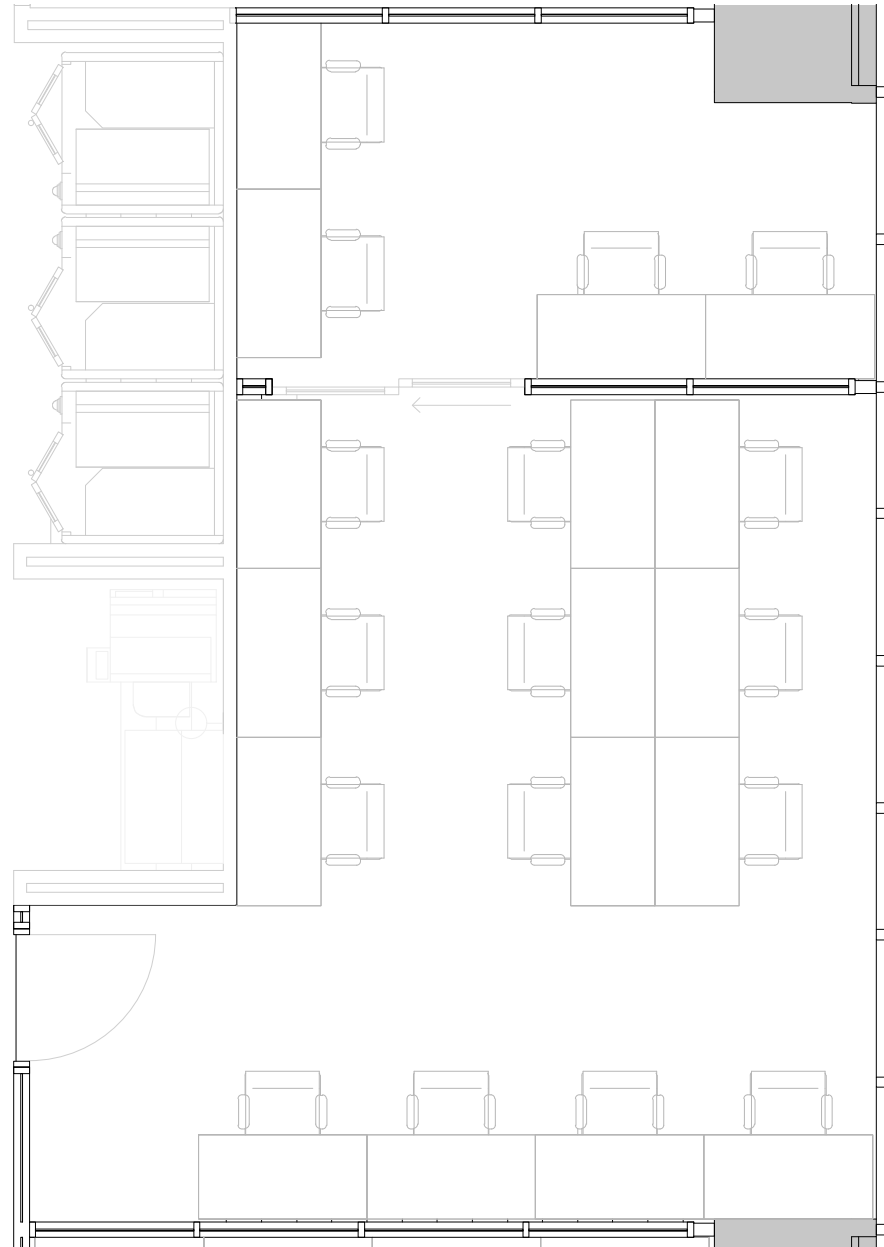
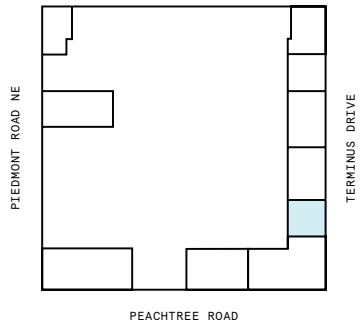
6th Floor

1

PRIVATE OFFICE(S)

996 RSF

RENTABLE AREA

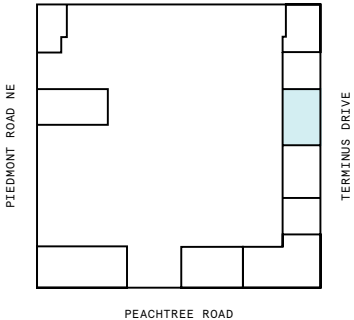
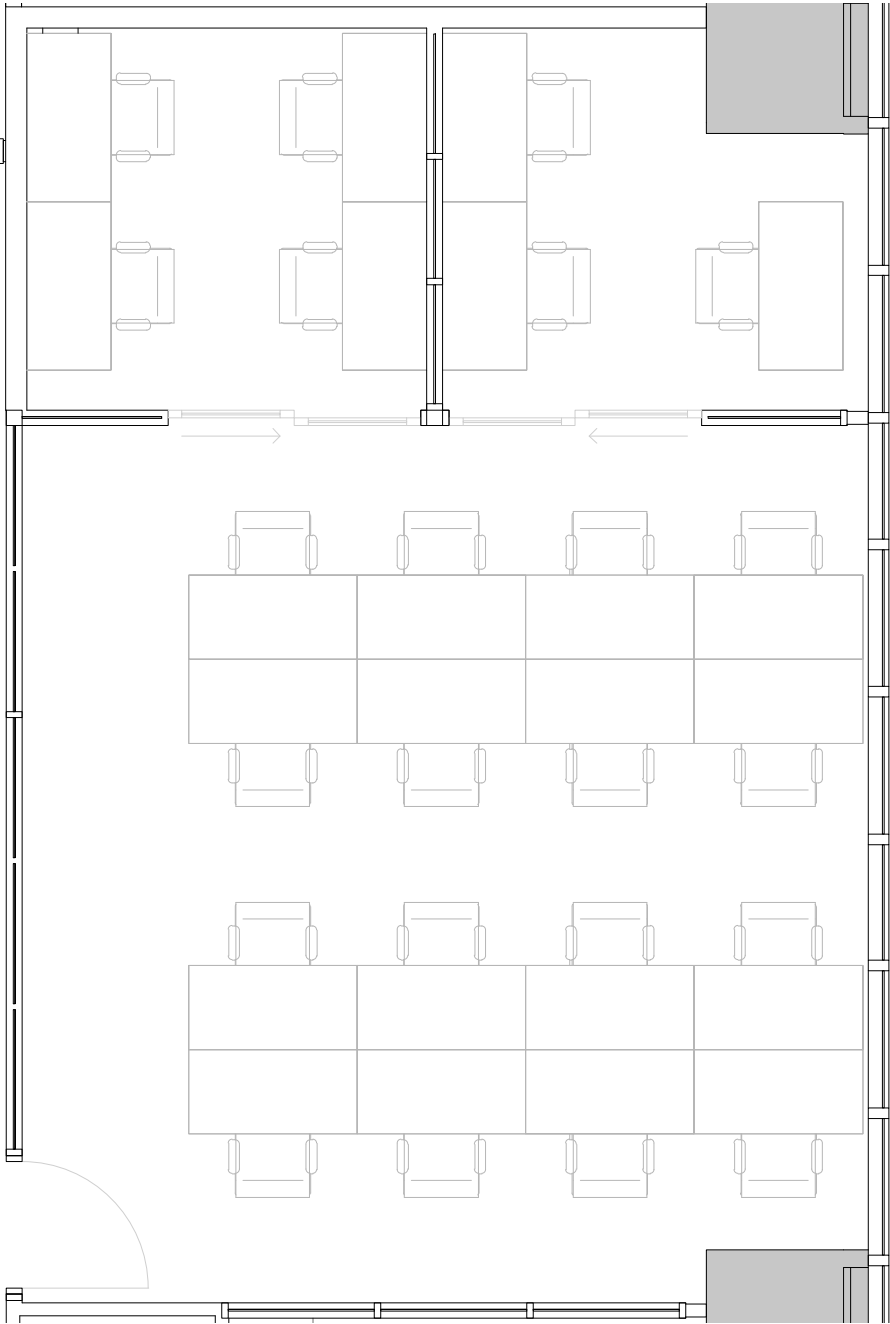


# Suite 113

6th Floor

2  
PRIVATE OFFICE(S)

1,278 RSF  
RENTABLE AREA

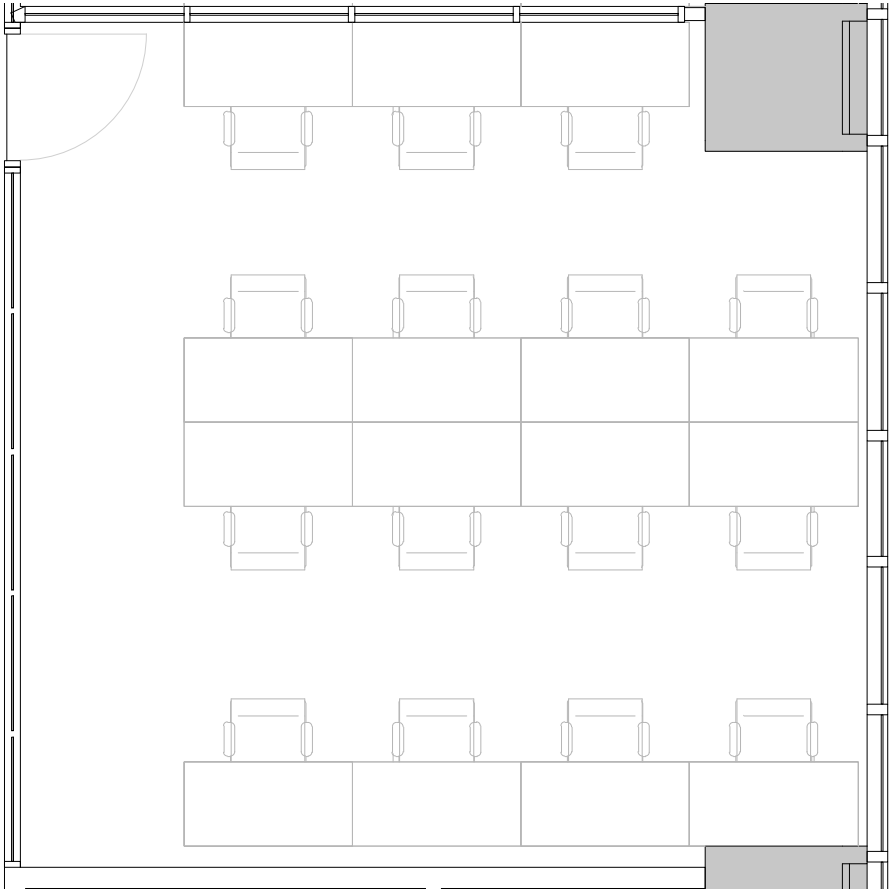
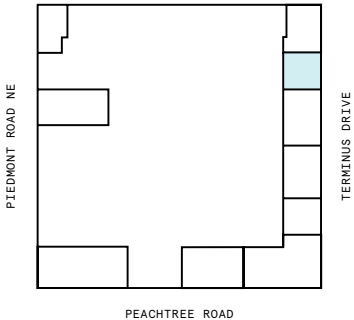




# Suite 117

6th Floor

854 RSF  
RENTABLE AREA

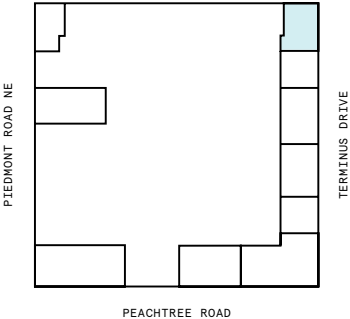
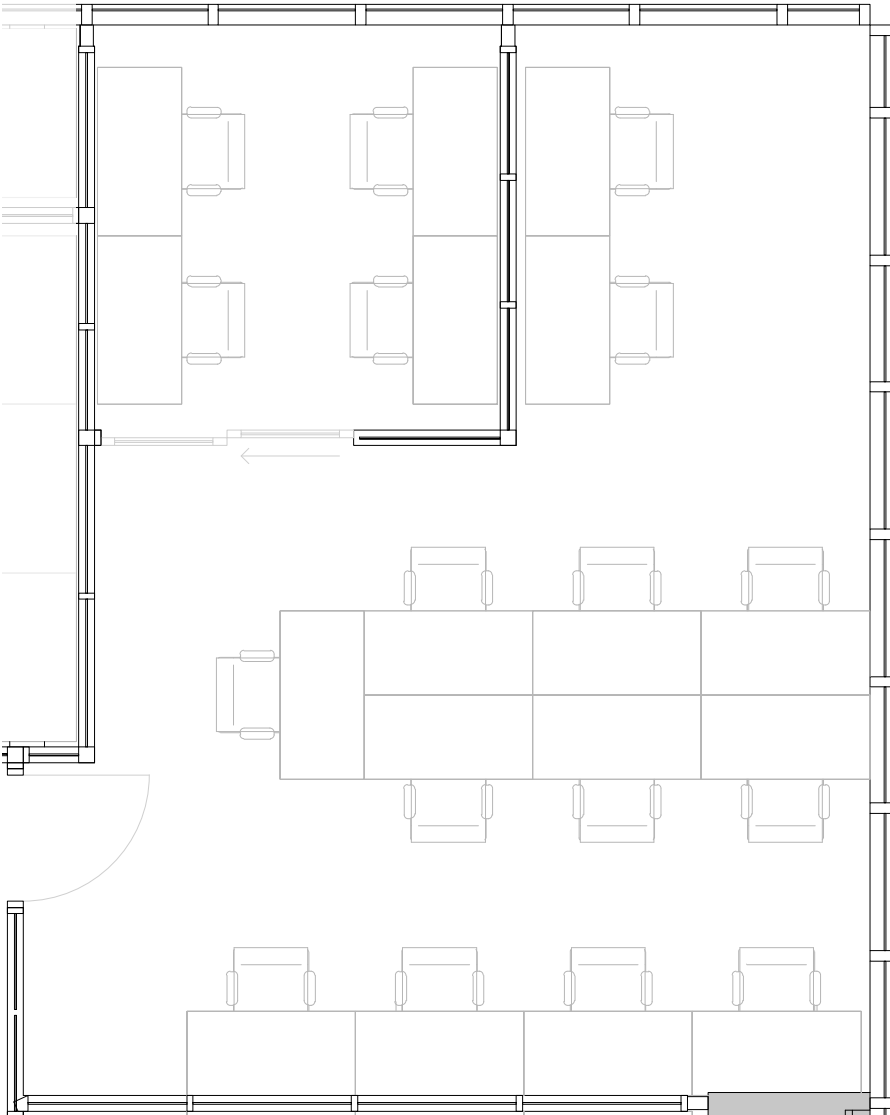


# Suite 118

6th Floor

1  
PRIVATE OFFICE(S)

1,051 RSF  
RENTABLE AREA

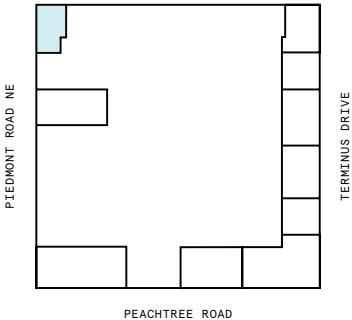
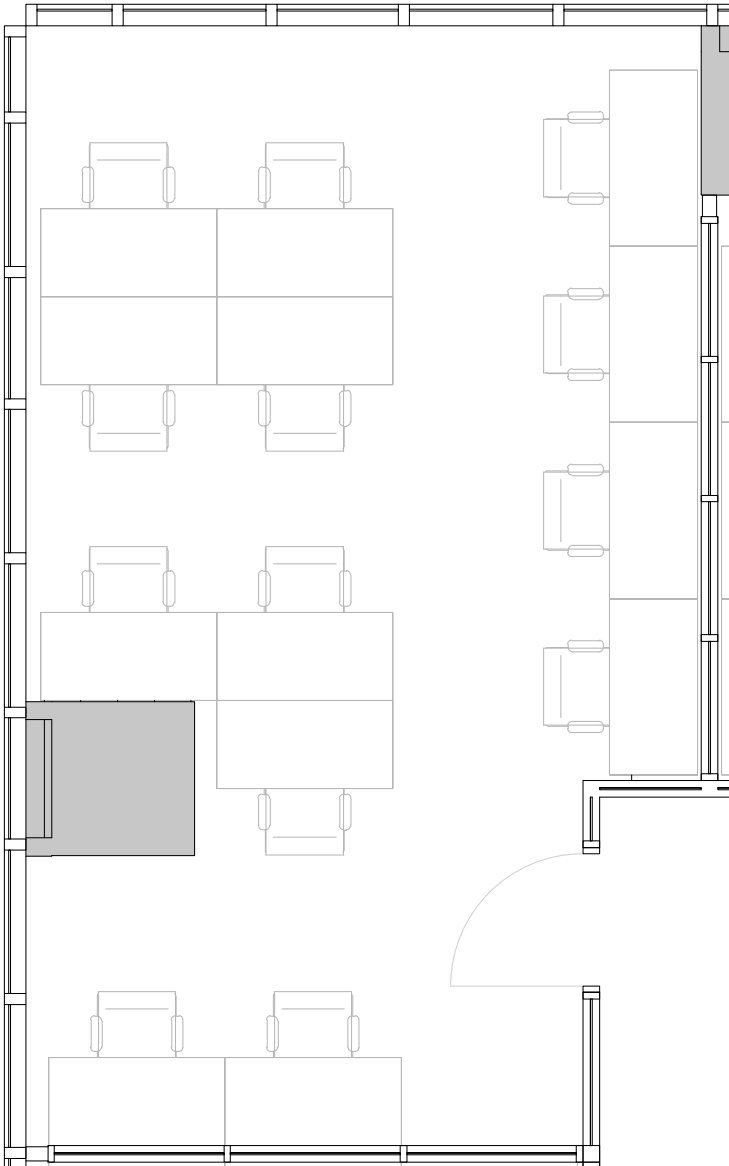


# Suite 144

6th Floor

1  
PRIVATE OFFICE(S)

793 RSF  
RENTABLE AREA



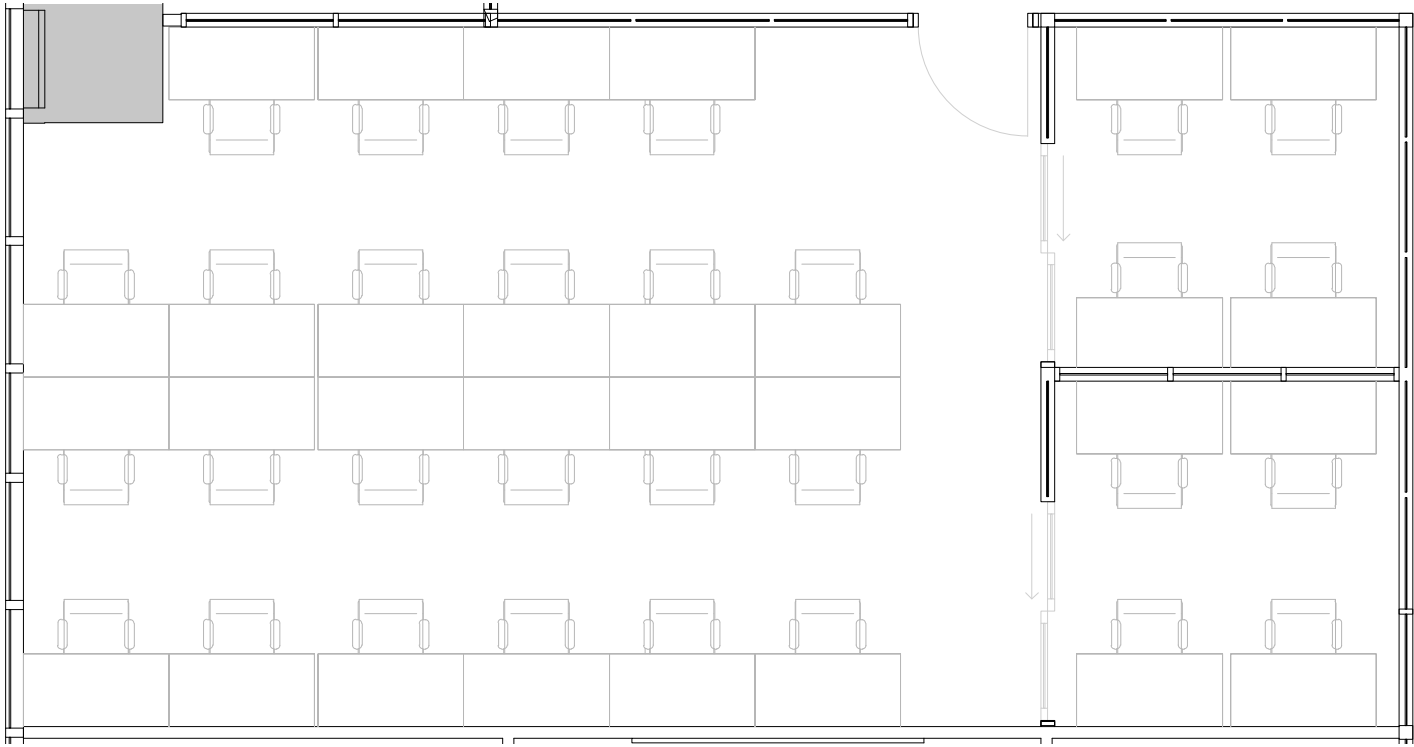
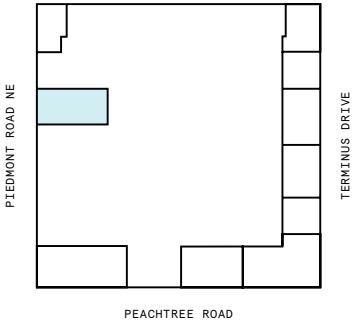


# Suite 148

6th Floor

2  
PRIVATE OFFICE(S)

1,529 RSF  
RENTABLE AREA



# 7th Floor

20,459 RSF

3

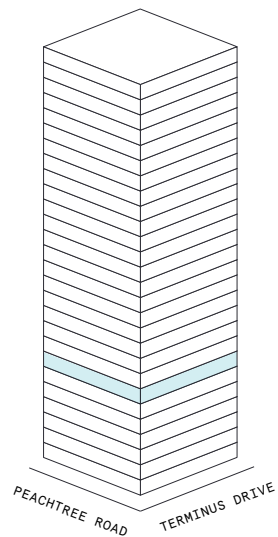
MEETING ROOM(S)

1

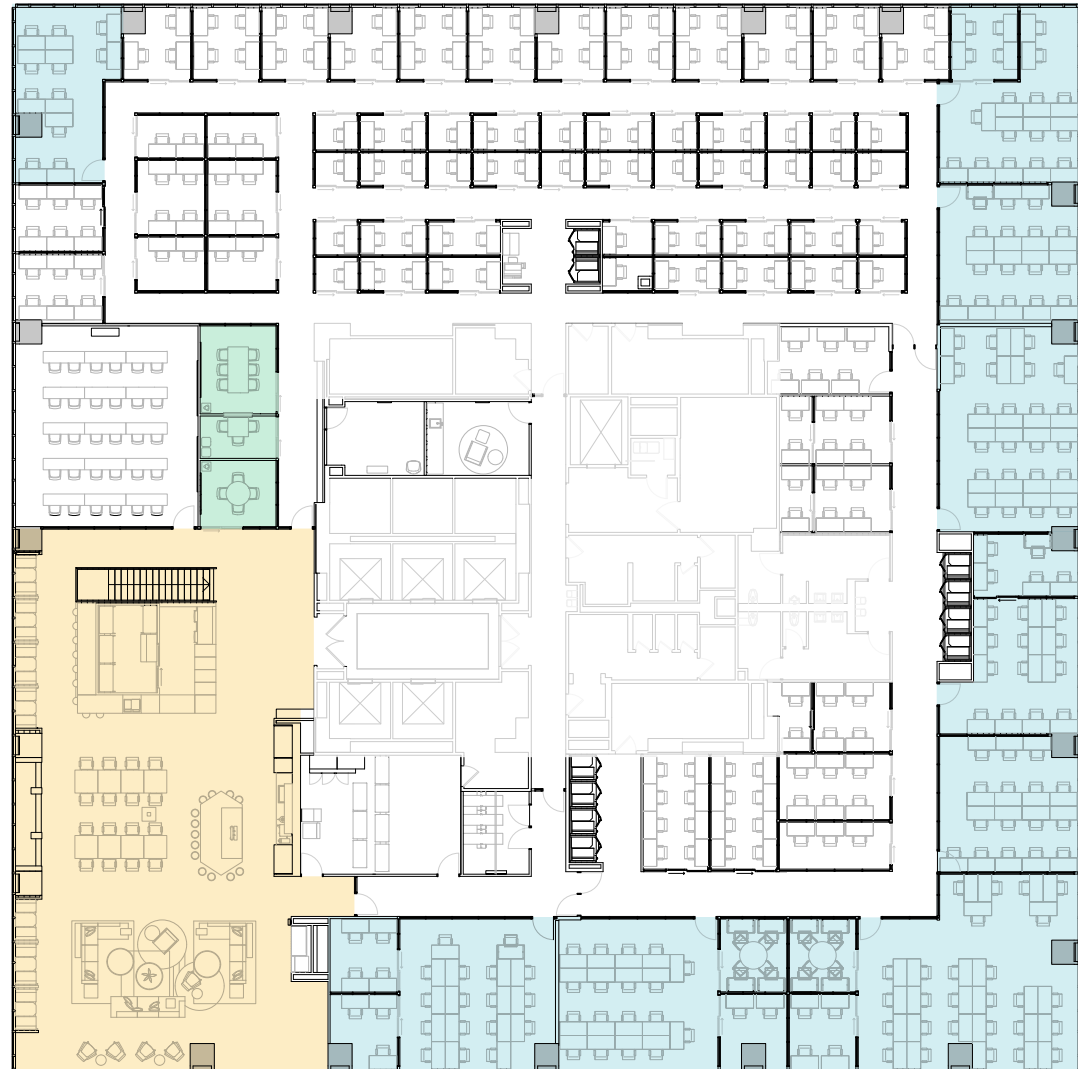
SHARED WORKSPACE(S)

## LEGEND

- MEETING ROOM
- SHARED WORKSPACE
- DEDICATED SPACE



PIEDMONT ROAD NE



PEACHTREE ROAD

TERMINUS DRIVE

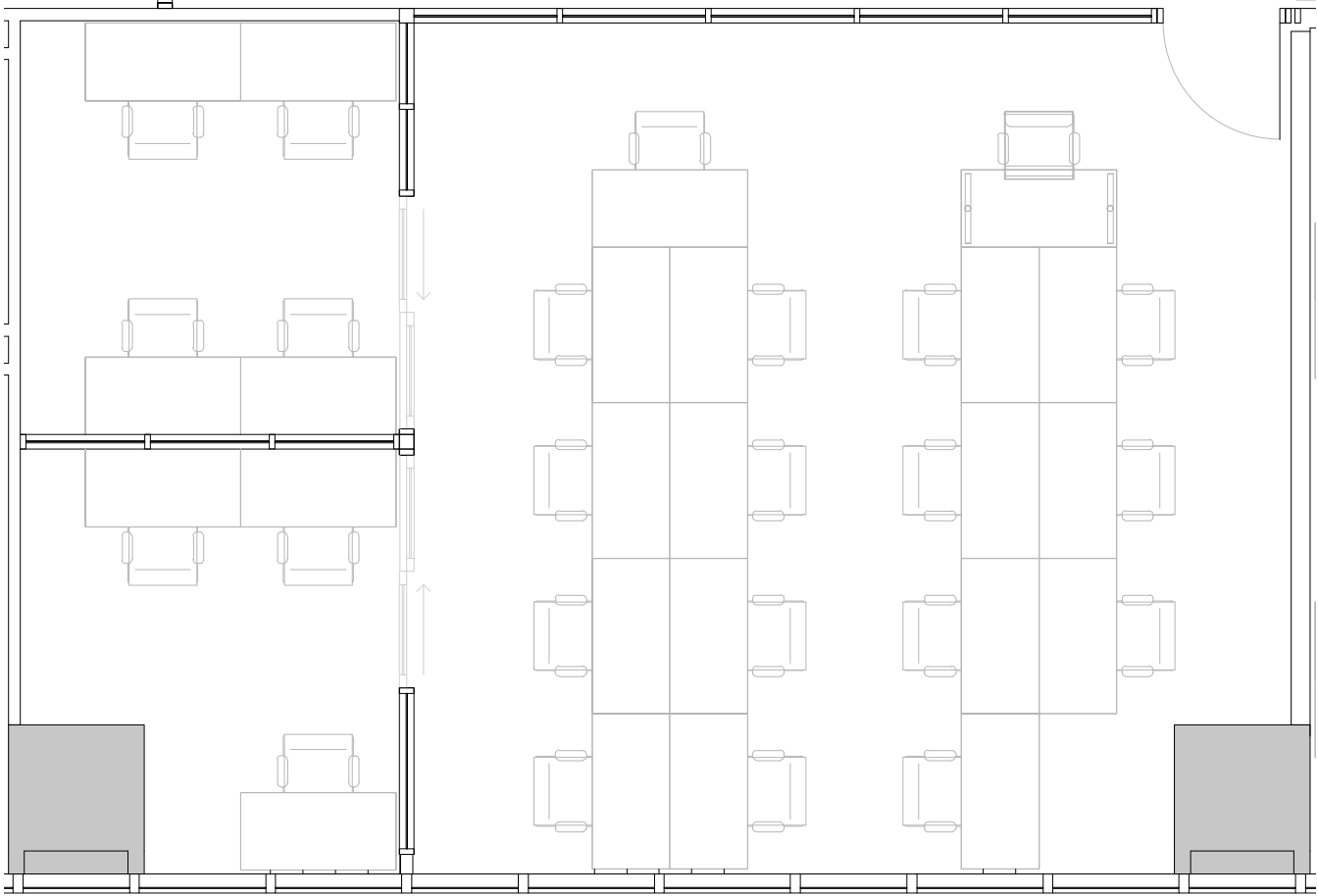
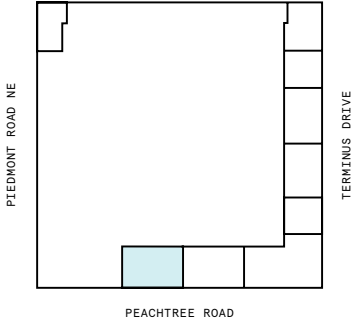


# Suite 101

## 7th Floor

2  
PRIVATE OFFICE(S)

1,450 RSF  
RENTABLE AREA



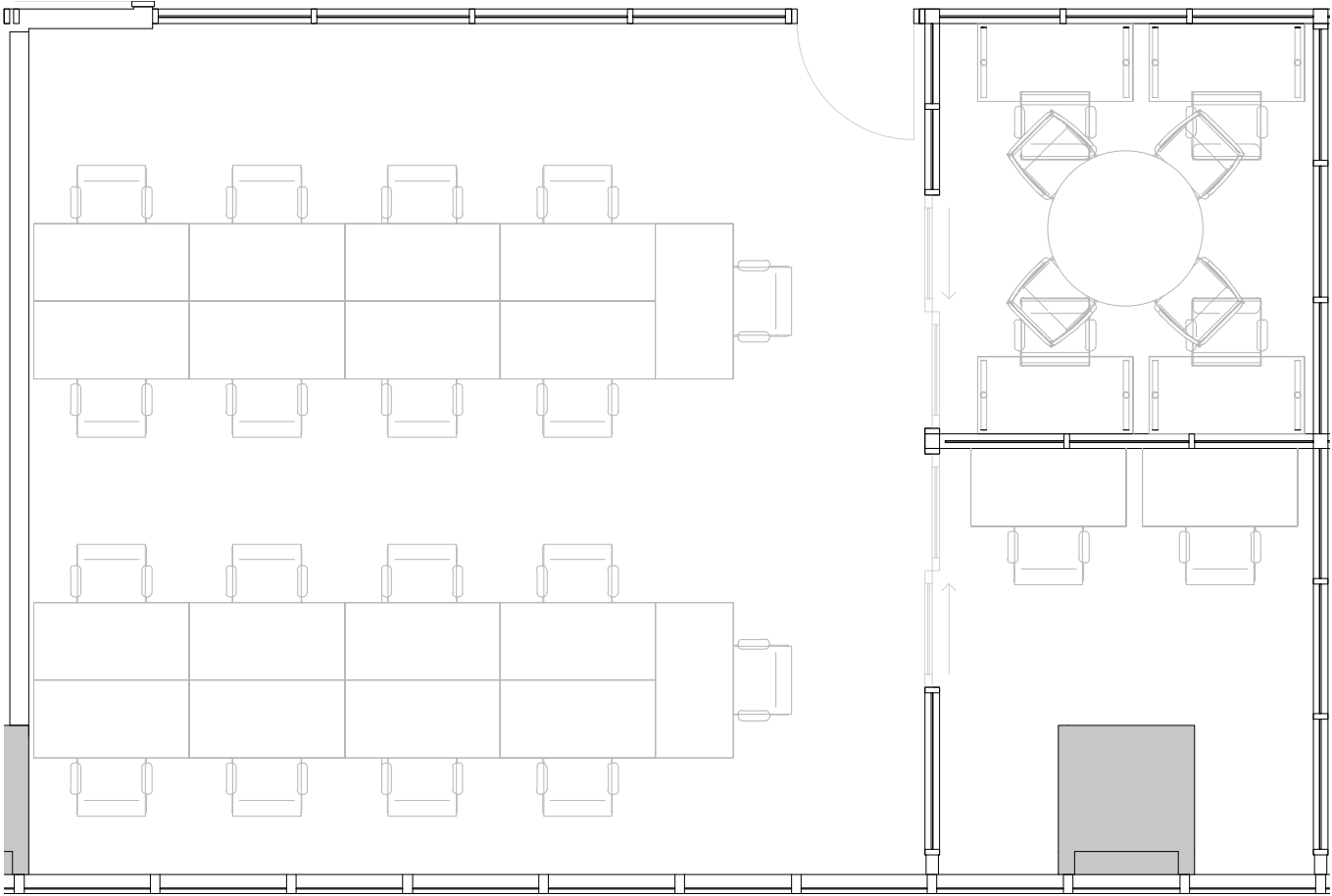
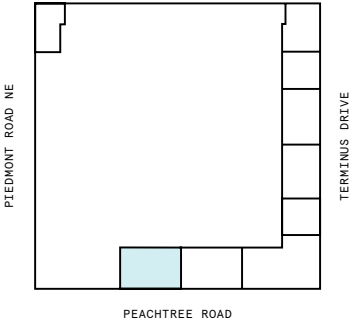


# Suite 102

## 7th Floor

2  
PRIVATE OFFICE(S)

1,488 RSF  
RENTABLE AREA

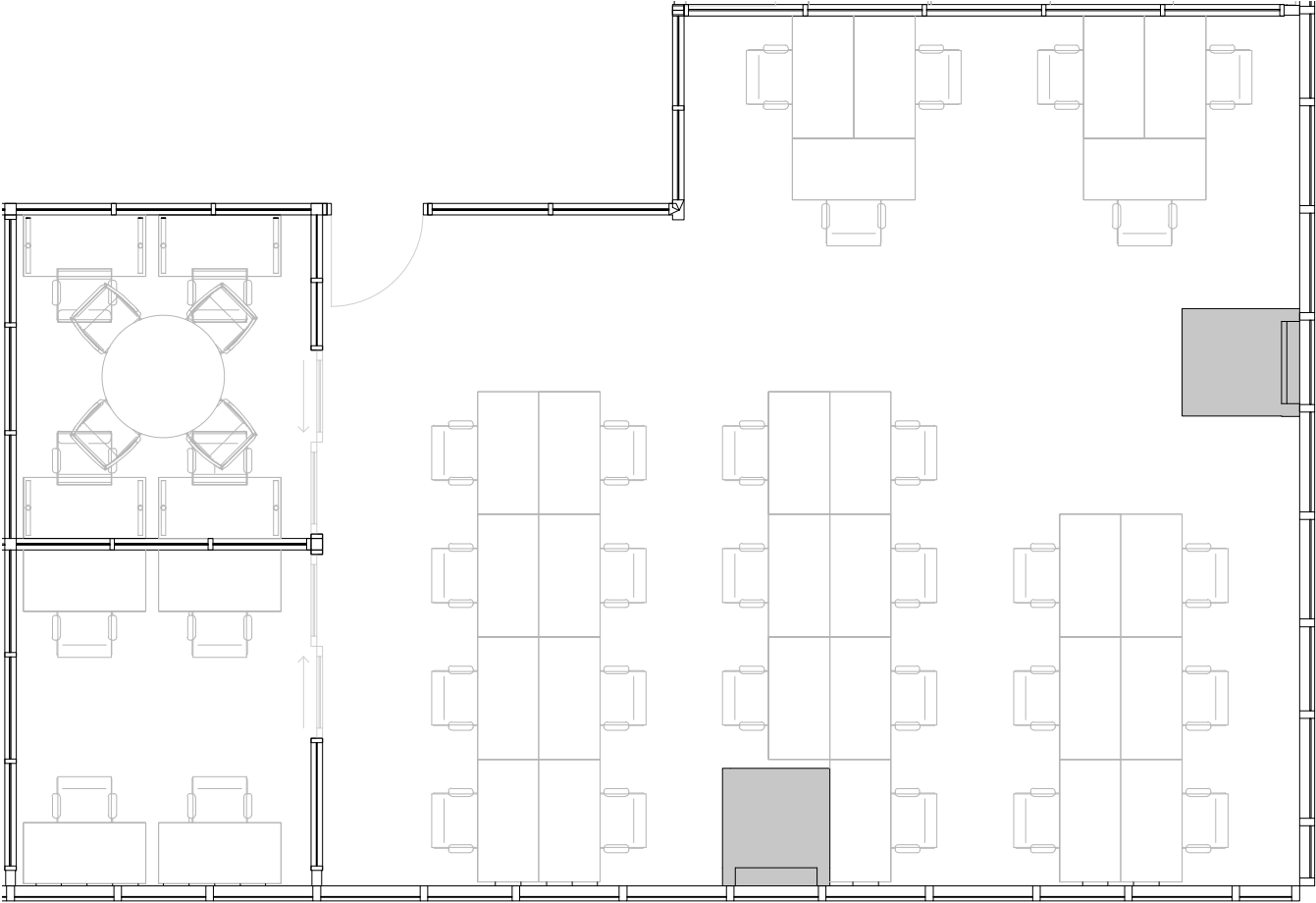
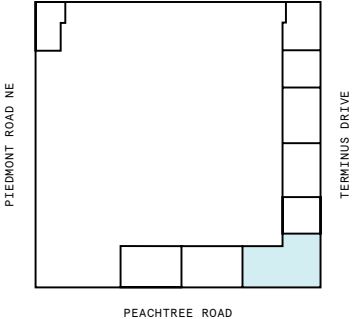


# Suite 105

7th Floor

2  
PRIVATE OFFICE(S)

2,167 RSF  
RENTABLE AREA

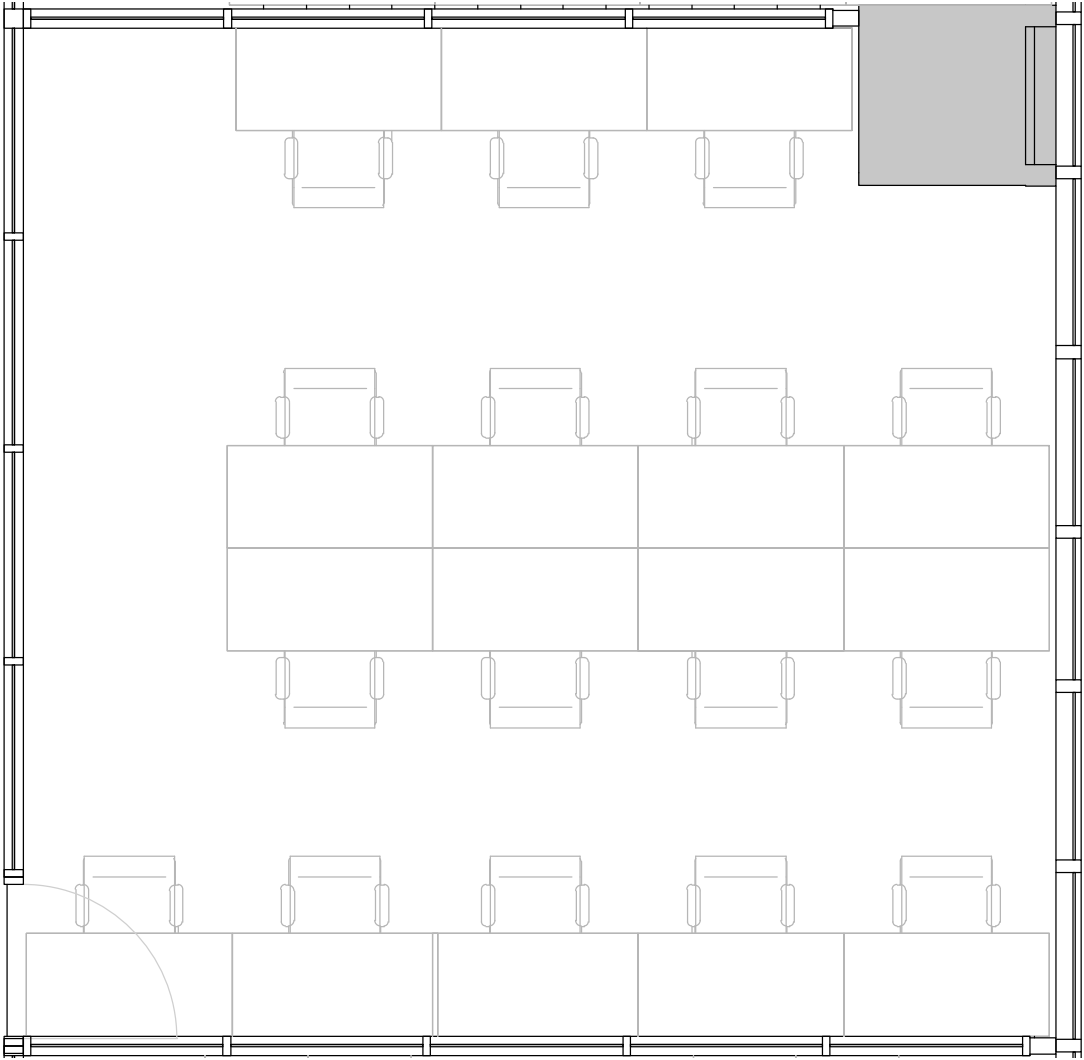
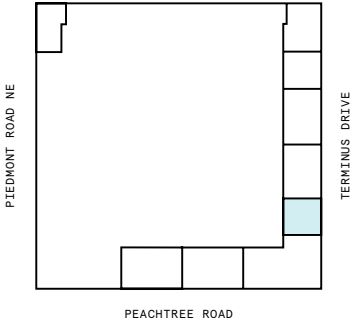


# Suite 107

7th Floor

818 RSF

RENTABLE AREA





# Suite 110

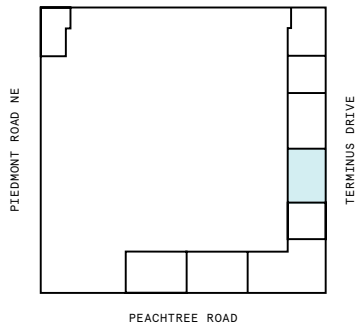
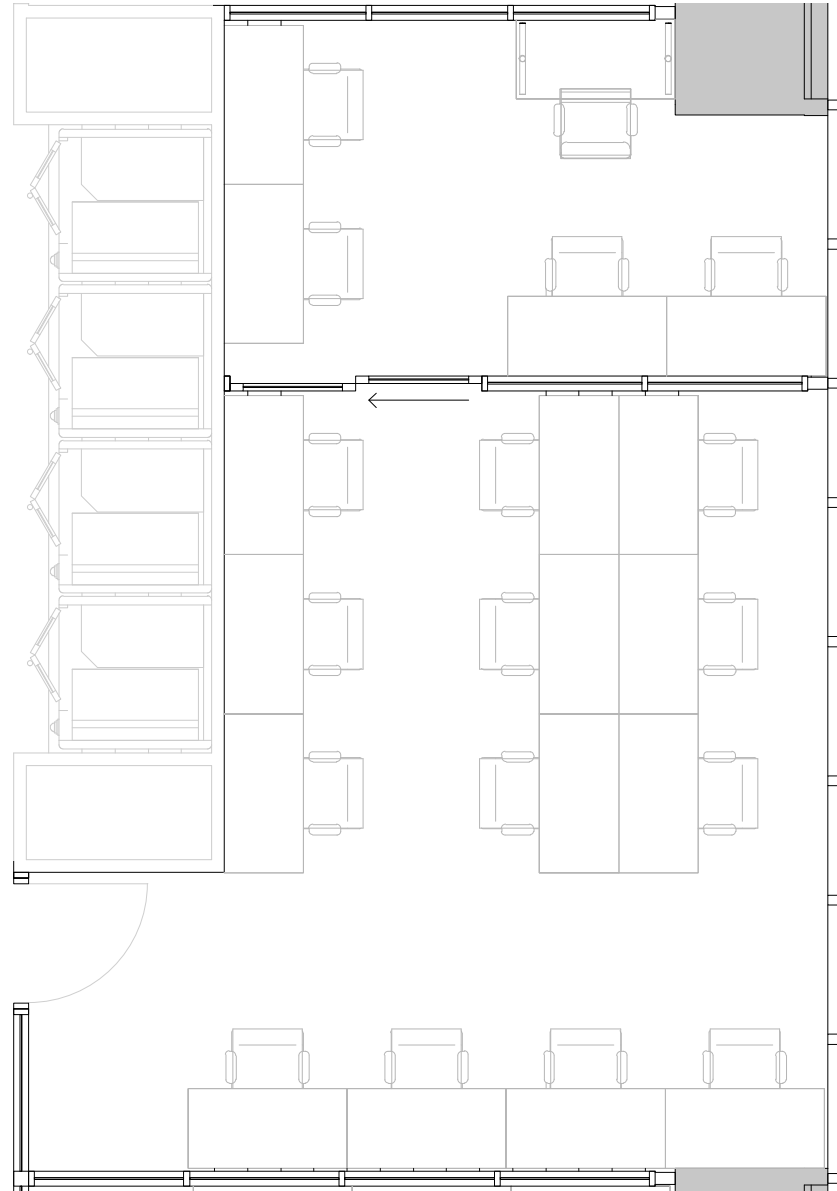
7th Floor

1

PRIVATE OFFICE(S)

982 RSF

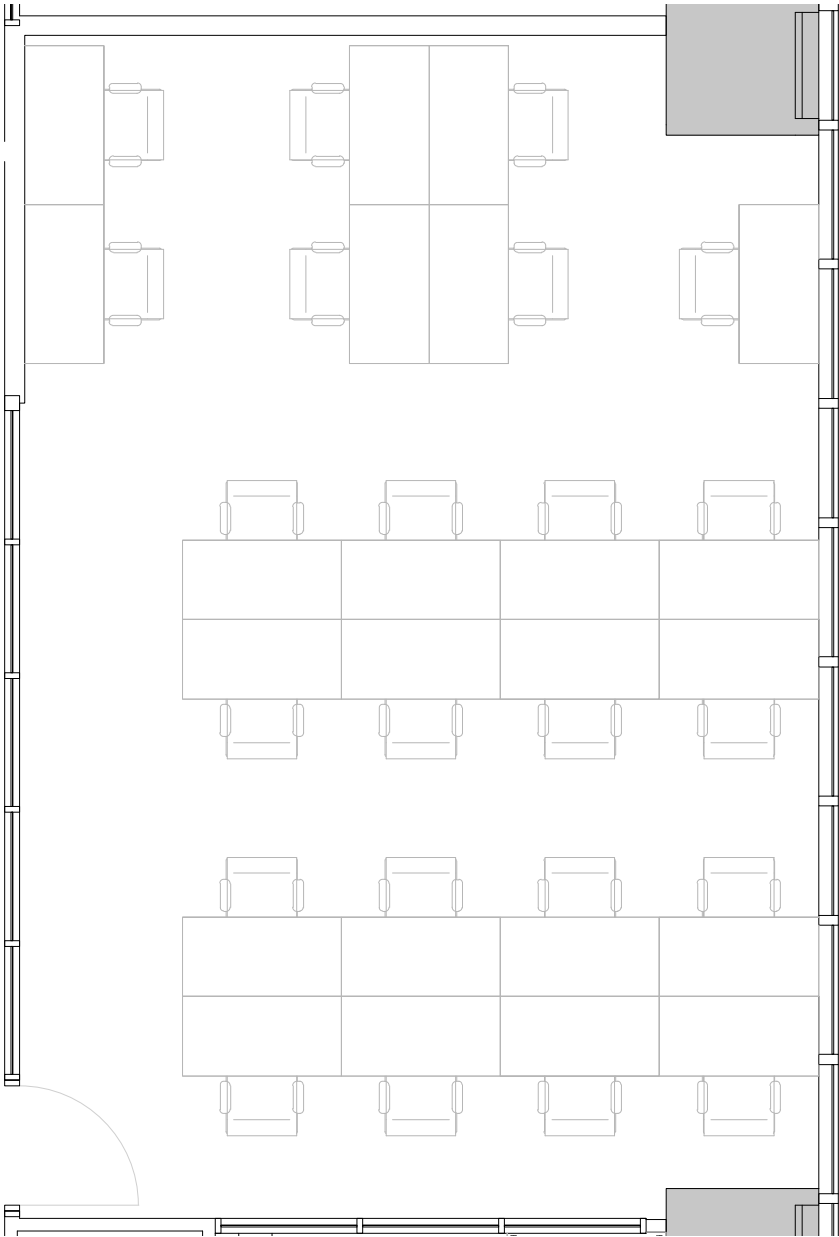
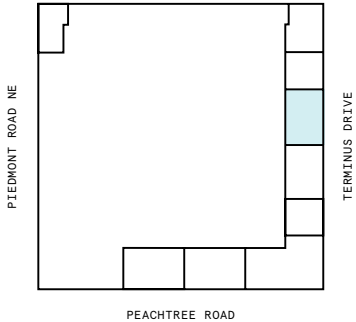
RENTABLE AREA



# Suite 112

7th Floor

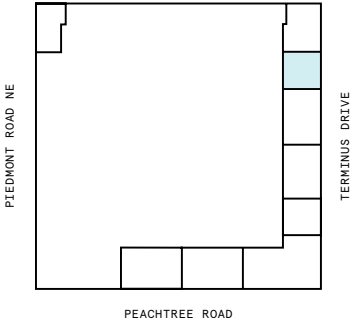
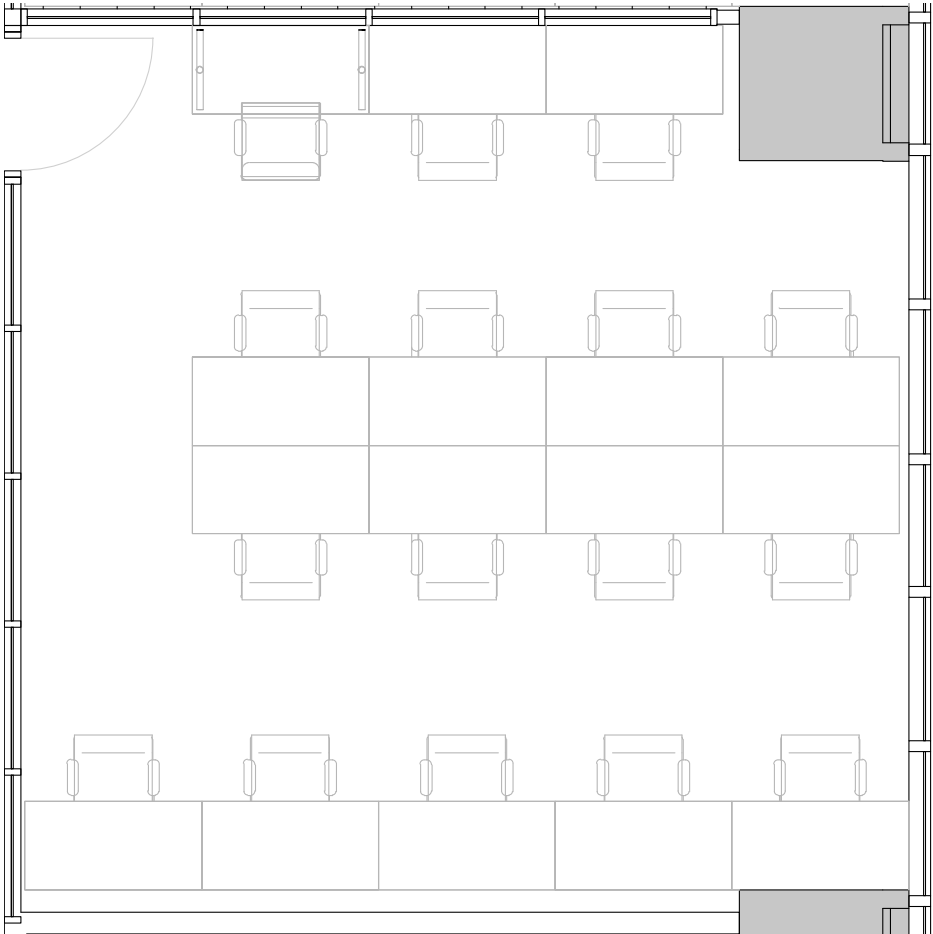
1,253 RSF  
RENTABLE AREA



# Suite 118

7th Floor

832 RSF  
RENTABLE AREA

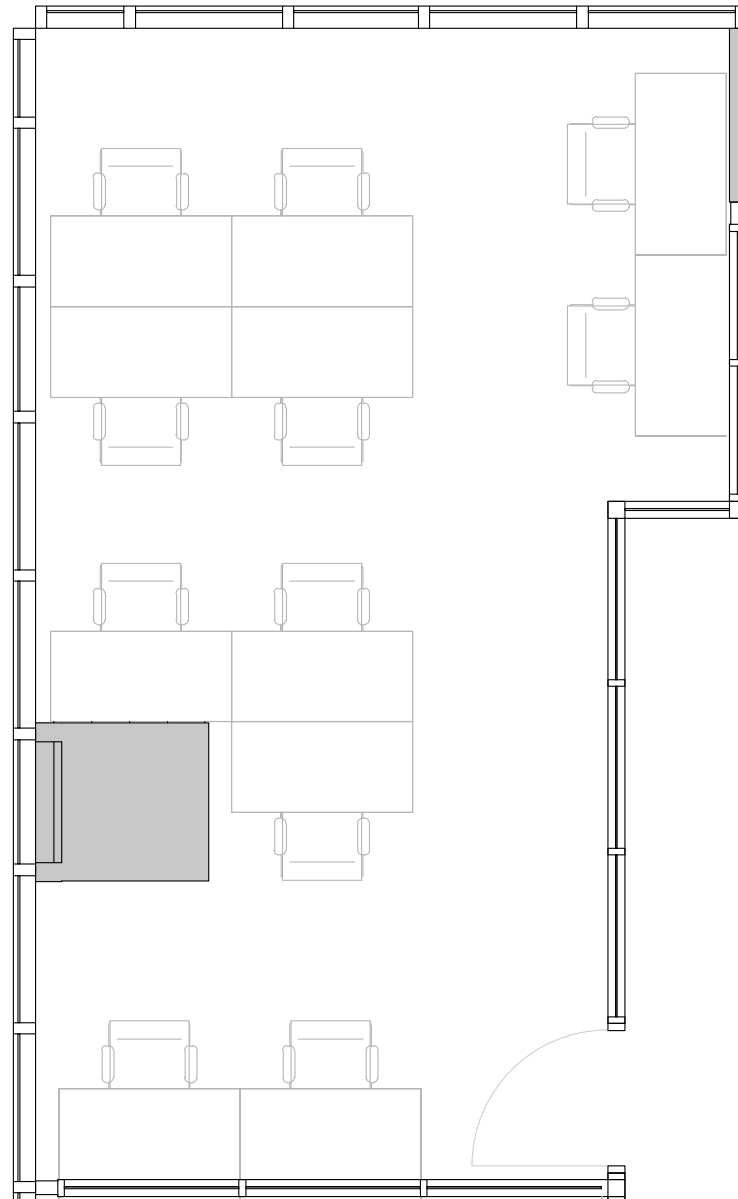
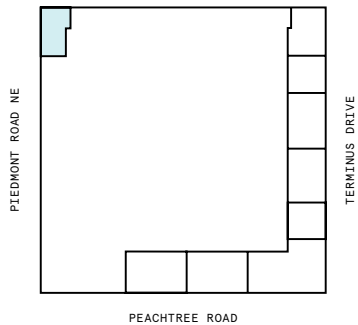




# Suite 146

7th Floor

735 RSF  
RENTABLE AREA



# 8th Floor

26,051 RSF

4

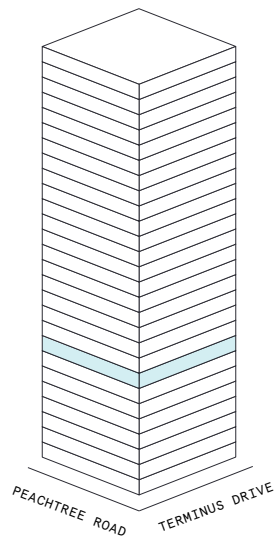
MEETING ROOM(S)

1

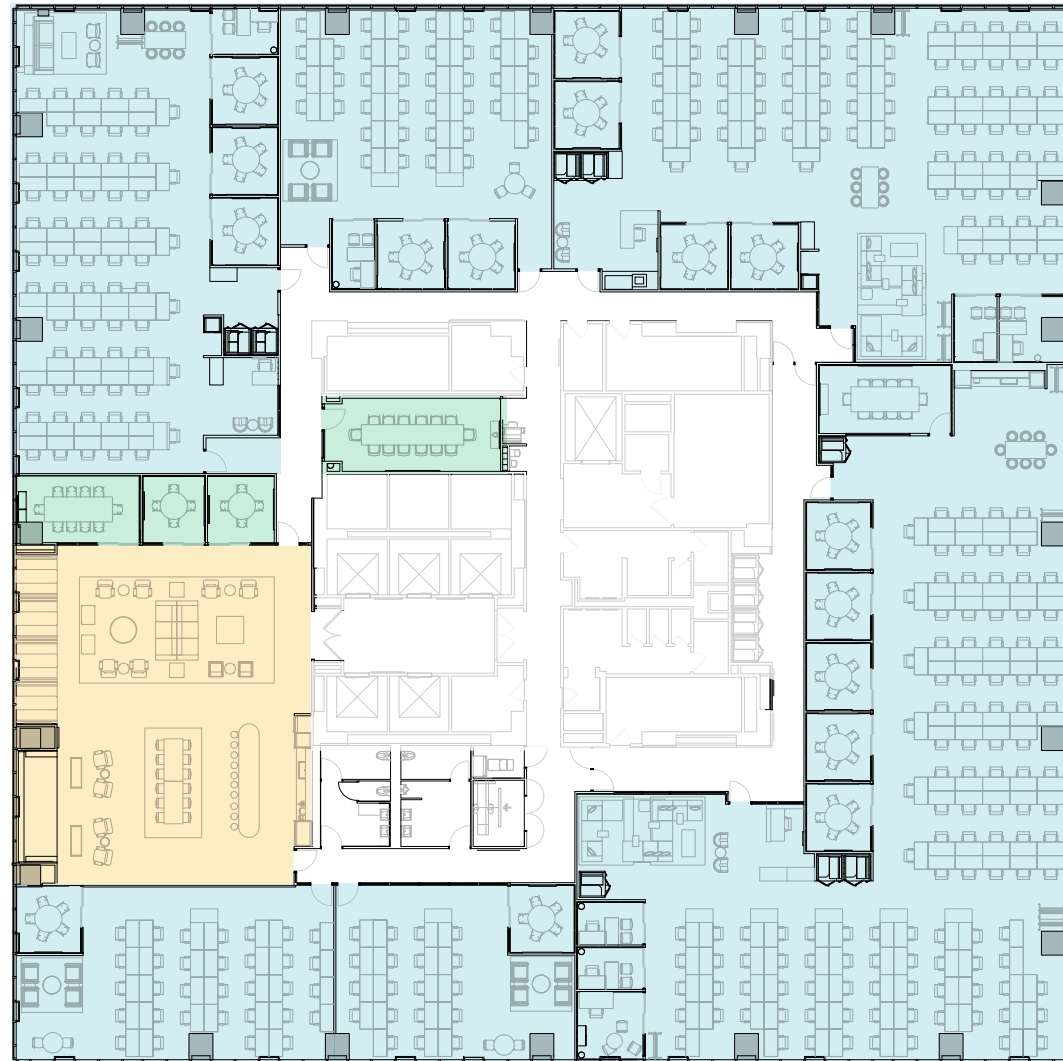
SHARED WORKSPACE(S)

## LEGEND

- MEETING ROOM
- SHARED WORKSPACE
- DEDICATED SPACE



PIEDMONT ROAD NE



PEACHTREE ROAD

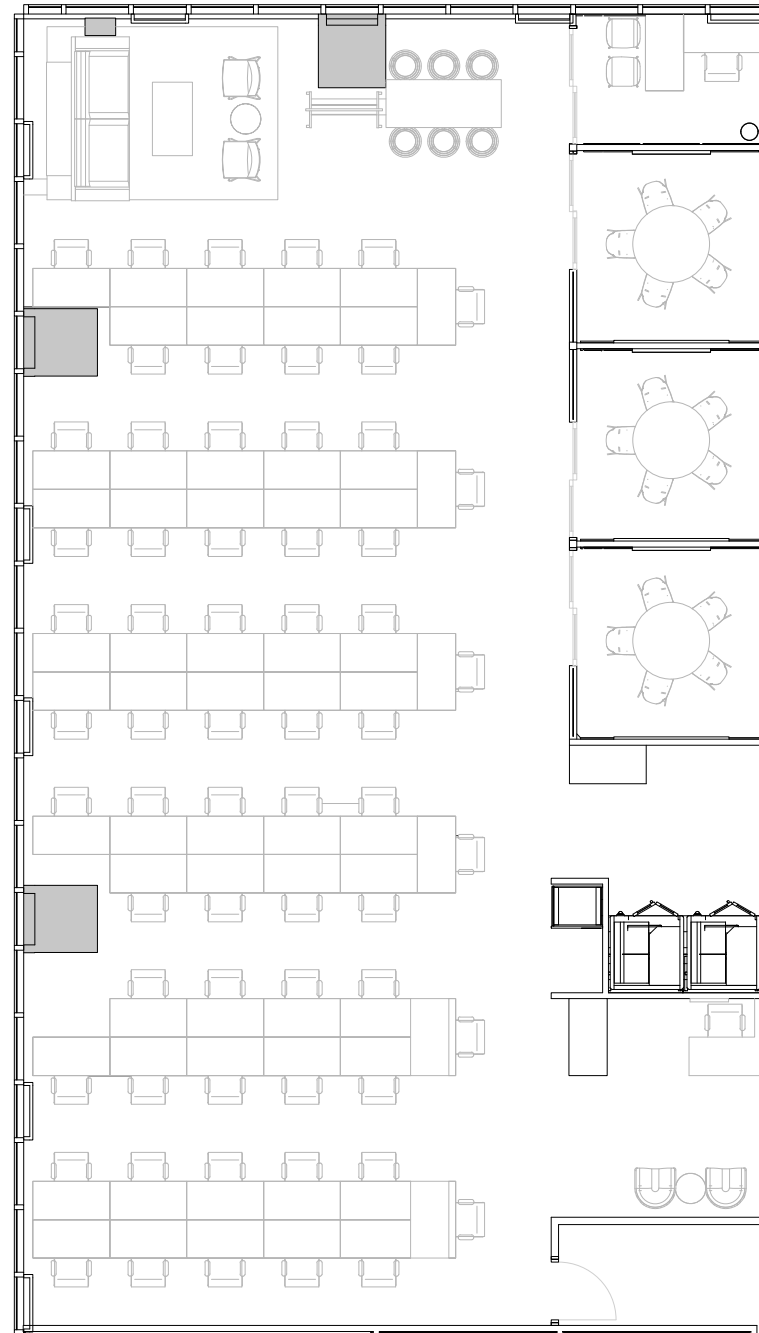
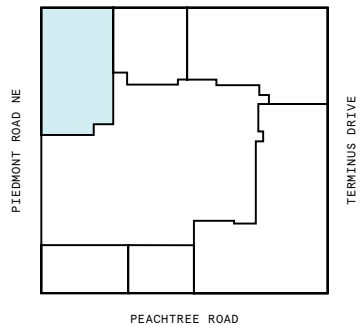
TERMINUS DRIVE



# Suite W101

8th Floor

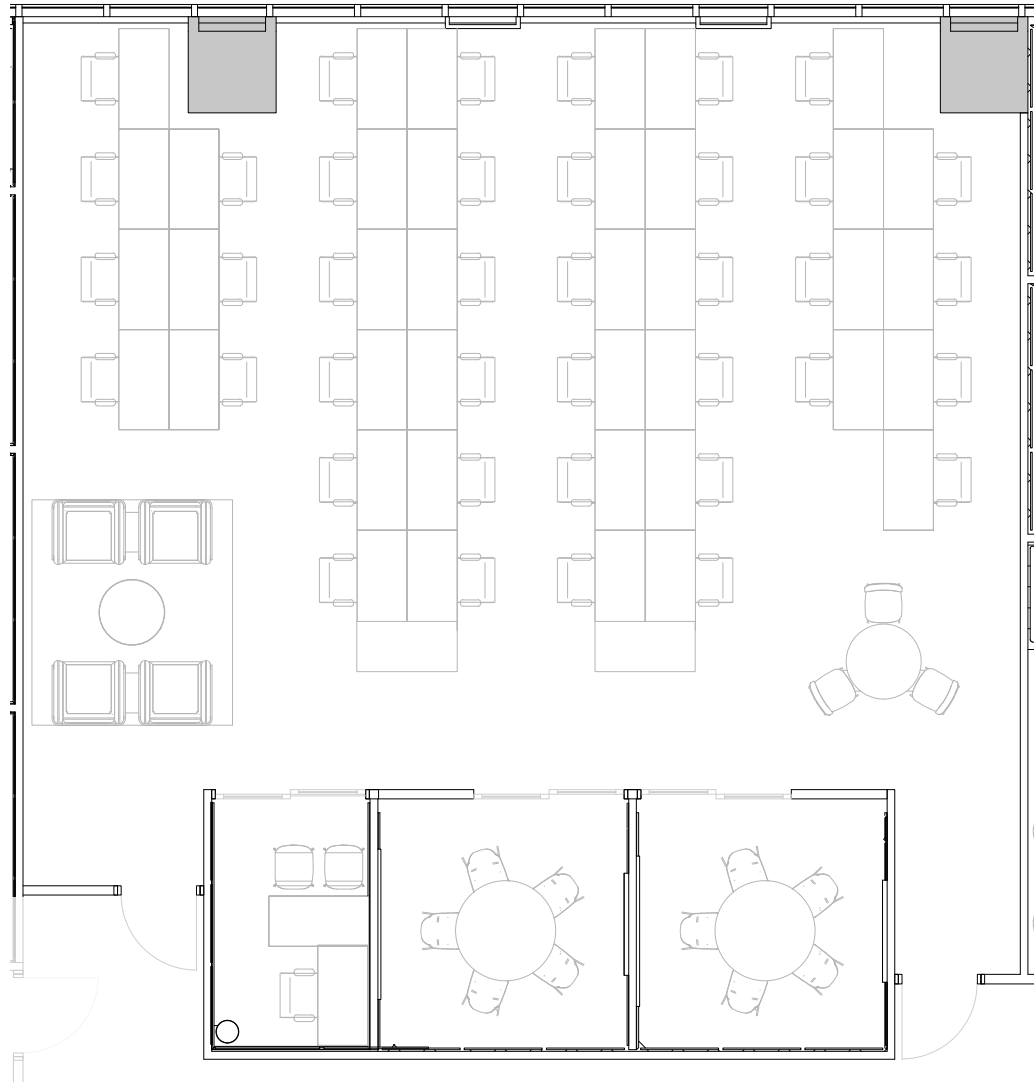
4,489 RSF  
RENTABLE AREA



# Suite W102

8th Floor

2,761 RSF  
RENTABLE AREA

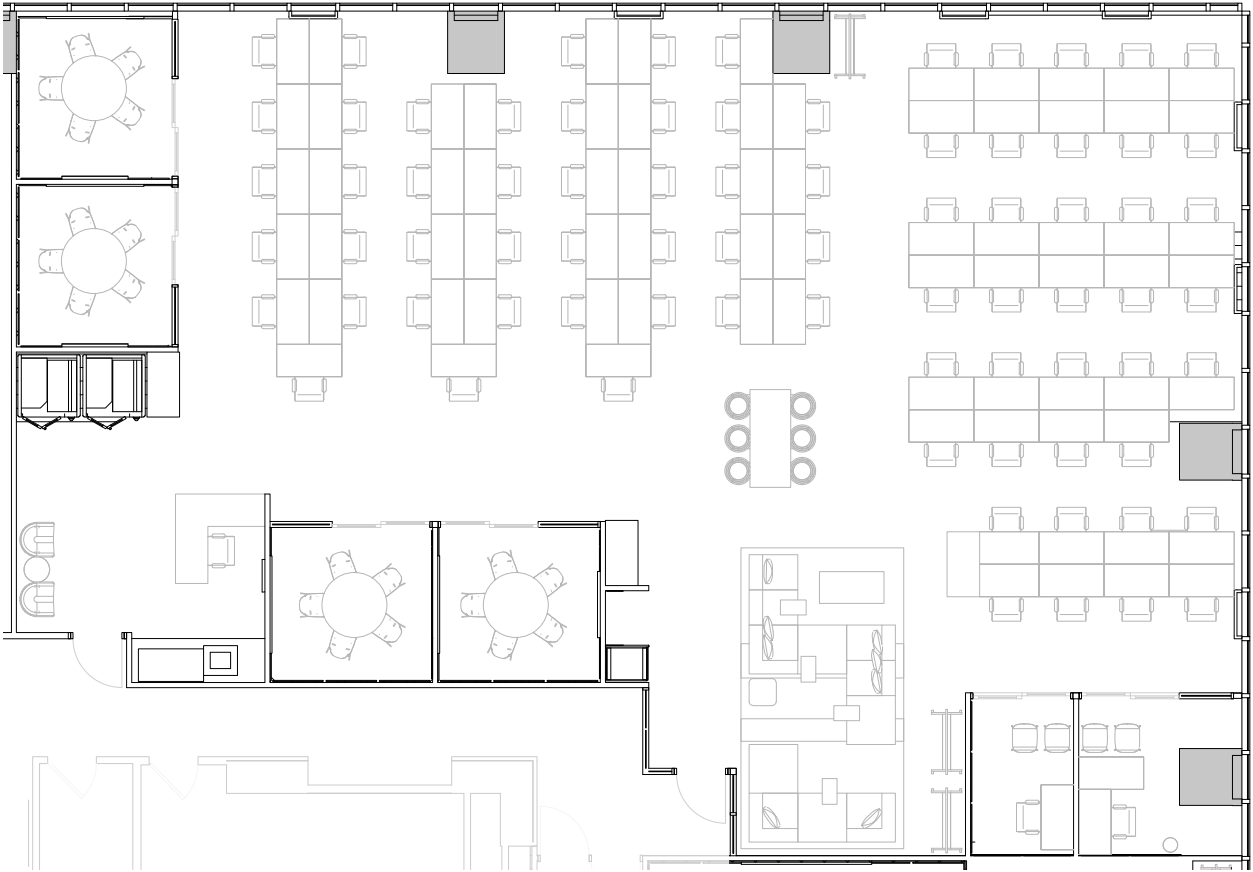
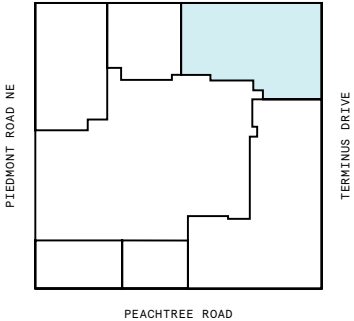


# Suite W103

8th Floor

6  
PRIVATE OFFICE(S)

5,959 RSF  
RENTABLE AREA





# Suite W104

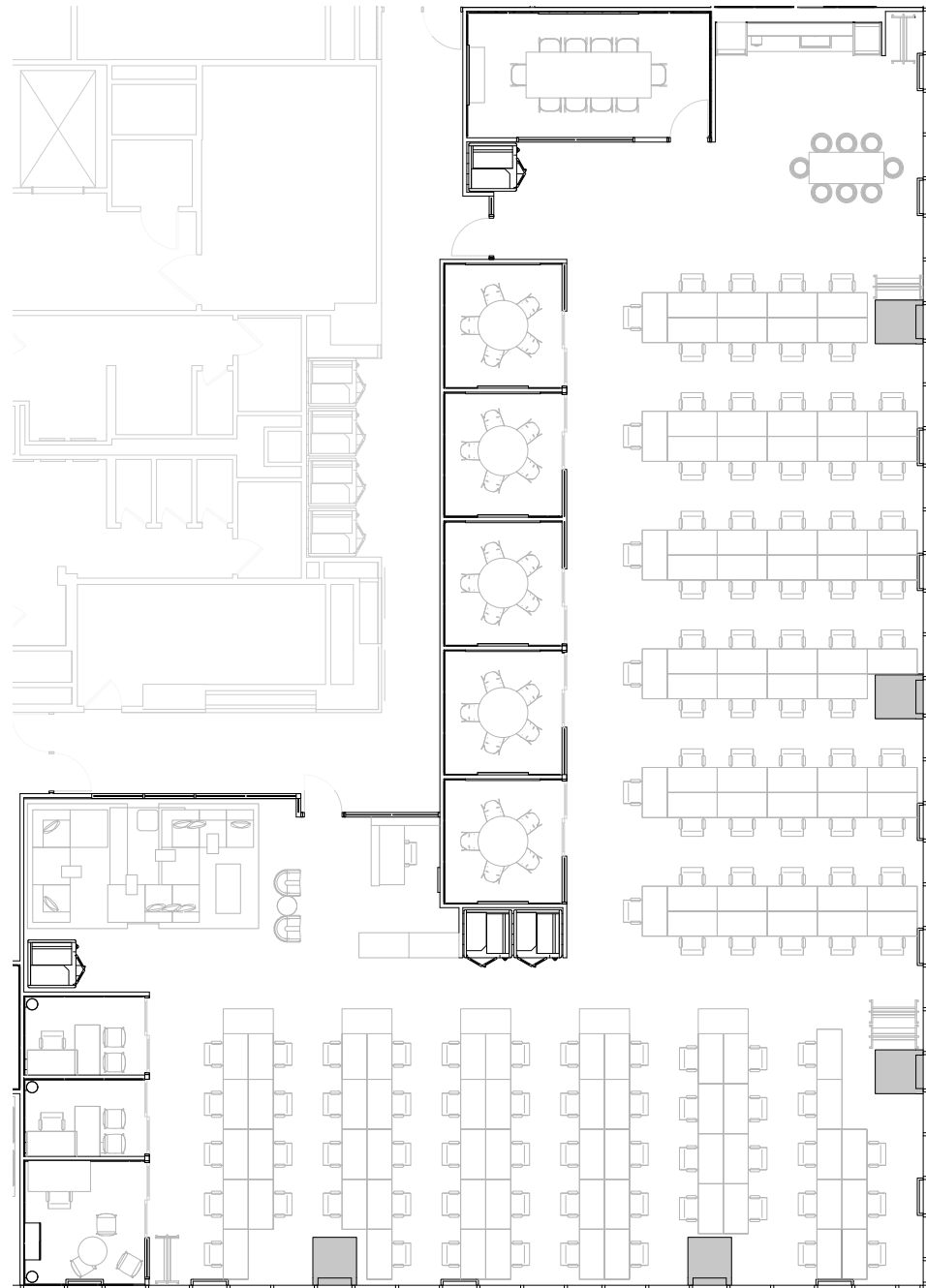
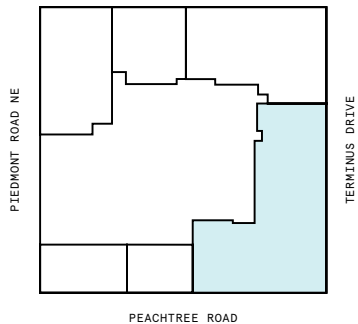
## 8th Floor

9

PRIVATE OFFICE(S)

8,855 RSF

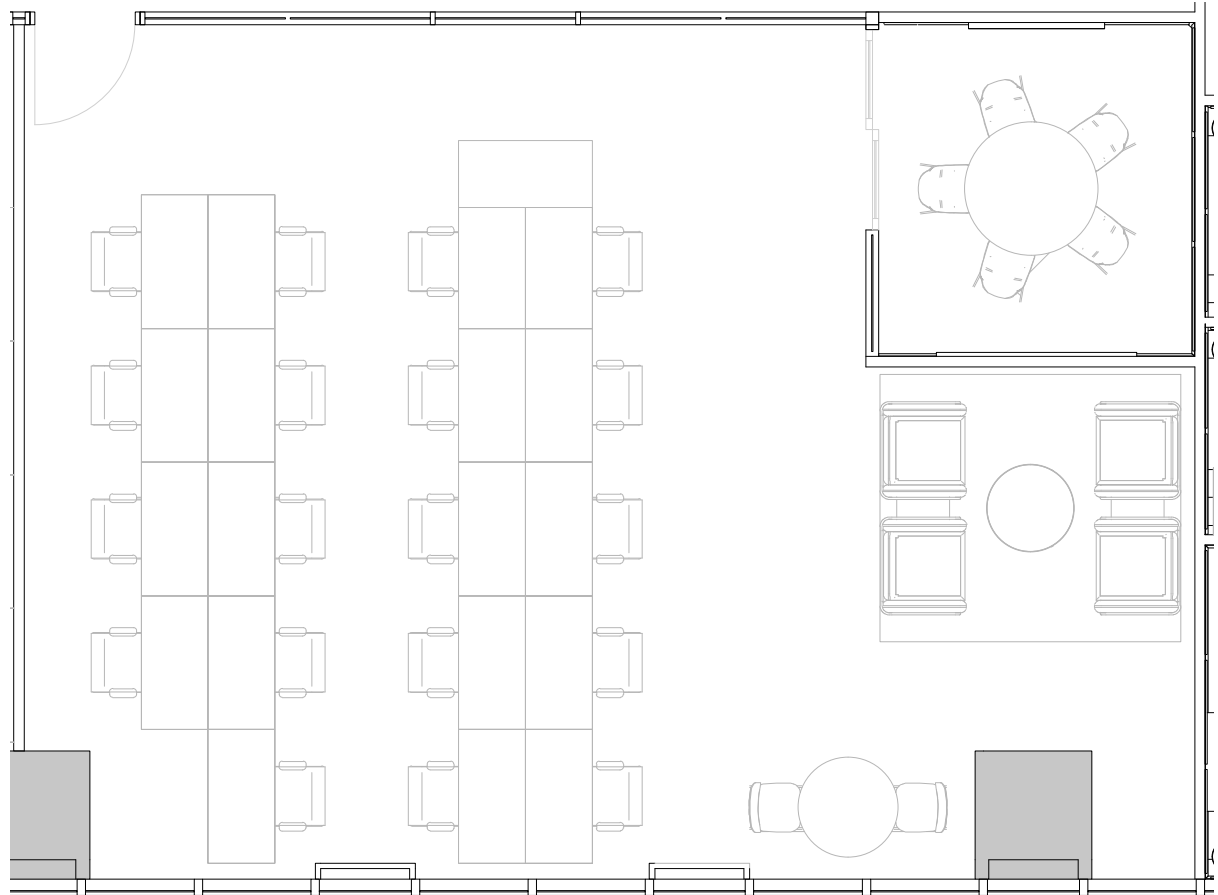
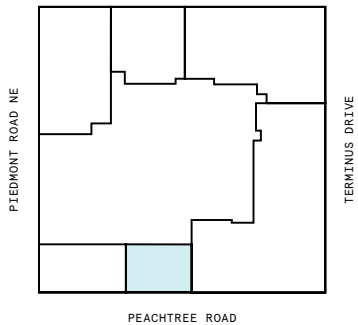
RENTABLE AREA



## 8th Floor

PRIVATE OFFICE(S)

1,543 RSF  
RENTABLE AREA



# Contact

---

Complete the form [linked here](#) to book a tour or connect with one of our team members.



© 2023 WeWork. The WeWork trademark and related logos are the property of WeWork Companies LLC. Any reference to third-party names are for reference and informational purposes only and should not be considered an endorsement or association of WeWork or vice versa. Photographs contained herein may be representative examples of various WeWork locations and do not necessarily depict the WeWork location referenced. While reasonable efforts have been made to check the accuracy of the information contained here, WeWork, its officers, employees, directors, and representatives, make no warranty, express or implied, regarding the accuracy of the information and disclaim any liability arising from the use of the information contained herein. All dimensions are approximate and subject to variances. It is your obligation to independently verify the particulars of the property. WeWork reserves the right to make changes.