

Innovation Pointe 1

1633 West Innovation
Way



Space availability summary

WeWork @ 1633 West Innovation Way
Salt Lake City, UT

wework

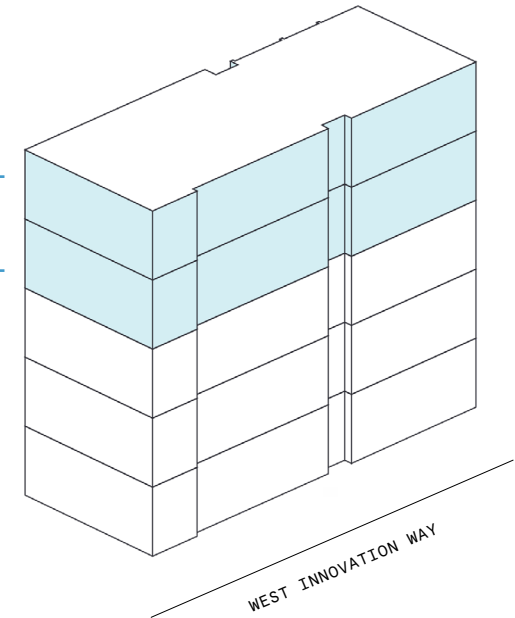
[VIEW VIRTUAL TOUR](#)

4th Floor 27,074 RSF

4th Floor 34,424 RSF

61,498 RSF

TOTAL WEWORK RSF



Innovation Pointe 1

At a glance

Workspaces designed for productivity and creativity with flexible size & term

Dedicated, private offices available from 75 to 3,980 RSF

Move-in ready suites furnished & wired

5

TOTAL BUILDING FLOORS

138,000

TOTAL BUILDING SQ FT

All dimensions are approximate and subject to variances. It is your obligation to independently verify the particulars of the property. WeWork reserves the right to make changes.



Ultra-modern workspace amid a burgeoning tech scene

Innovation Pointe 1 is centrally situated in the city of Lehi. This booming tech hub—appropriately referred to as Silicon Slopes—is home to neighbors like Adobe, Microsoft, Oracle, and more. Built in 2018, this 5-story, Class-A glass structure features over 138,000 square feet. Thanks to its floor-to-ceiling windows, it's not only flooded with natural light—the building also offers breathtaking views of the eminent Utah mountainscape. WeWork's flexible workspace includes a mix of sleek private offices, locally inspired lounges, and spacious meeting rooms sure to inspire and engage.



Enjoy astonishing views of the mountains and landscapes that inspired this workspace's design and artwork.



Graphic art, colorful textiles, and live greenery bring the unique character of Utah's national parks and remarkable scenery to the office.

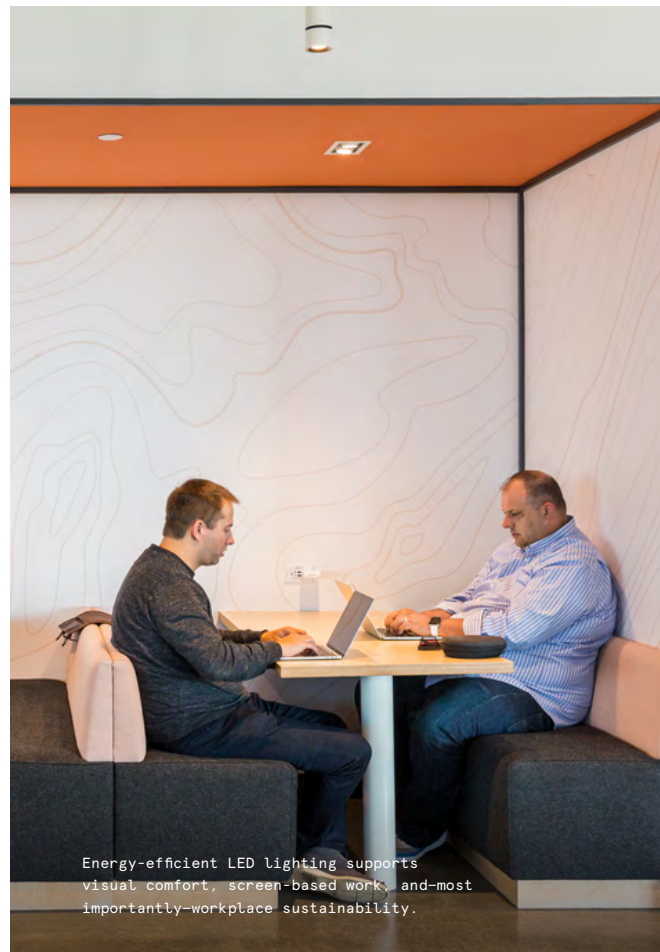
A space inspired by the outdoors

Innovation Pointe 1 is a modern oasis for innovation. Floor-to-ceiling windows provide breathtaking views of the eminent Utah mountainscape, while locally-sourced artwork inspired by local scenery and national parks is featured throughout the space's lounges. With bright pops of color, rich textiles, and a cozy-meets-contemporary feel, this fresh workspace encapsulates the character of Silicon Slopes itself.

- Outdoor terrace areas offer members a respite from work with plenty of fresh air and gorgeous mountain views
- Modern elements like concrete flooring and slate tiles are featured throughout and softened with patterned rugs, greenery, and splashes of warm color
- The internal central staircase with mint-green handrails and perimeter planters serves as a lively focal point and gathering spot



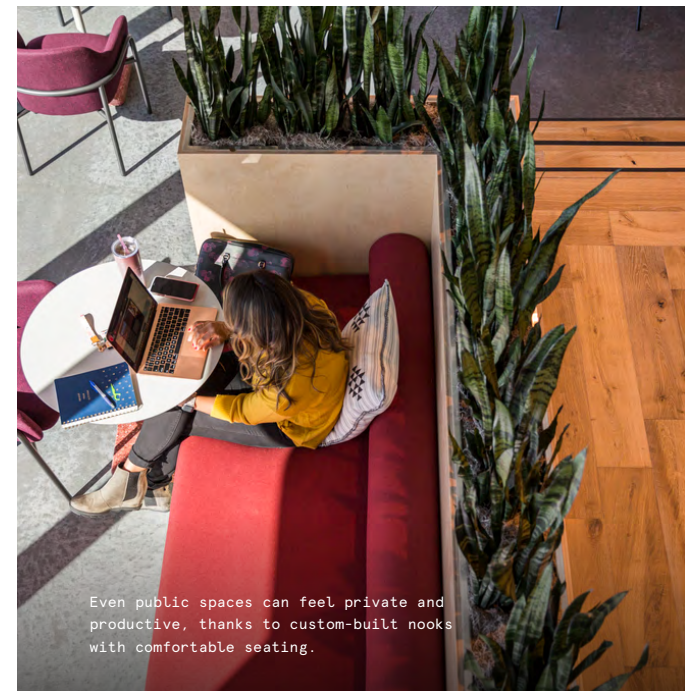
Meeting rooms with panoramic views provide plenty of space and seating for teams of all sizes.



Energy-efficient LED lighting supports visual comfort, screen-based work, and—most importantly—workplace sustainability.



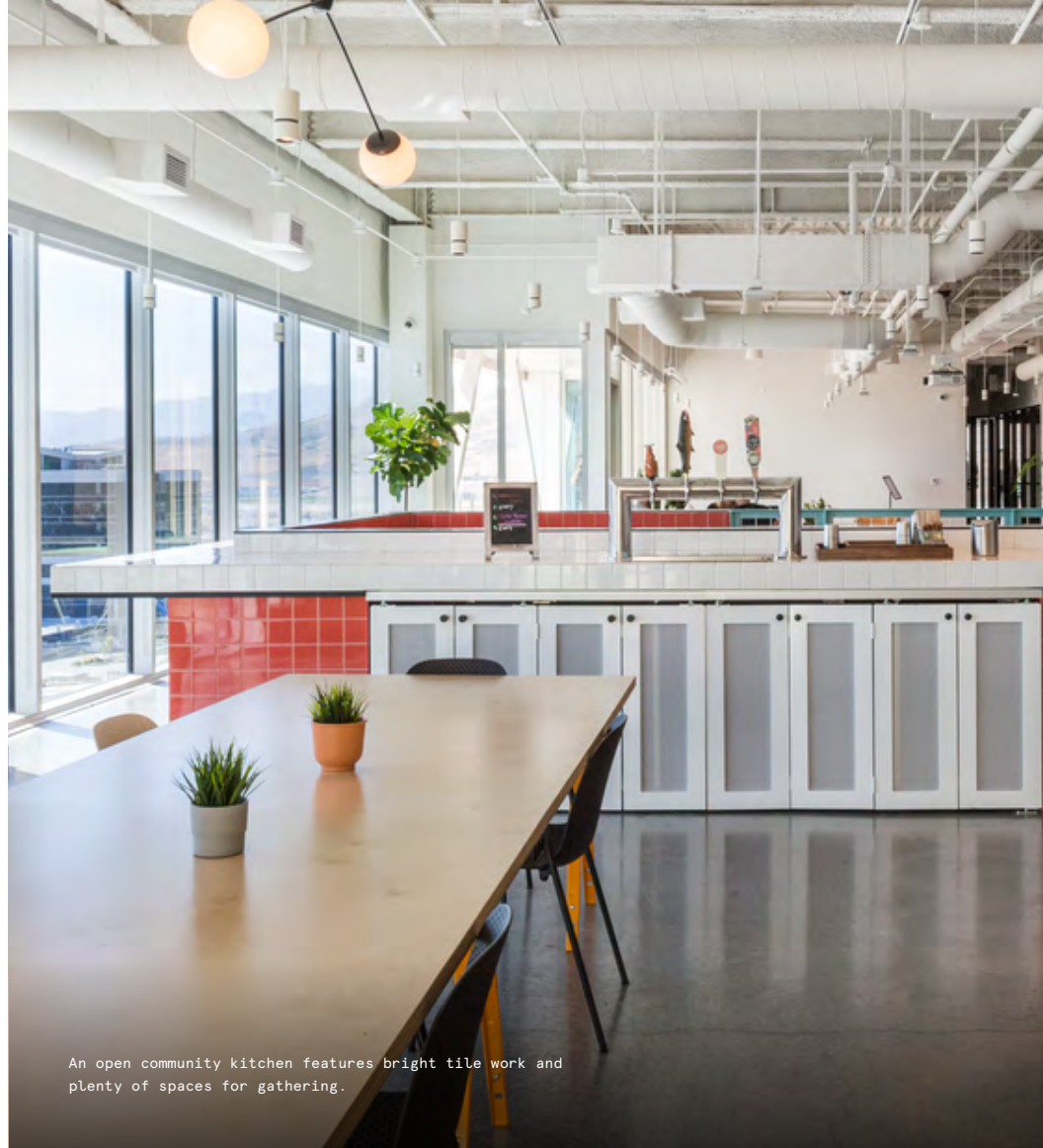
An on-site fitness center lets members fit in a workout at any time of day.



Even public spaces can feel private and productive, thanks to custom-built nooks with comfortable seating.



Custom neon artwork adds a playful, youthful charm to the sleek Community Desk.



An open community kitchen features bright tile work and plenty of spaces for gathering.

On-site amenities

- Electronic keyboard access
- Business-class printers
- Stocked pantry
- US mail drop
- On-site staff
- Meeting rooms
- New parent's room
- Phone booths
- Wellness/meditation room
- Event space
- Classroom space
- Fitness center
- Locker room with showers
- Gender-neutral restrooms
- Outdoor space
- Dog-friendly spaces
- Bicycle storage
- On-site parking
- Access to car charging station
- Emergency back-up power
- Supplemental HVAC and electric

Building specifications



Hours of operation

Monday – Friday:
8am–5pm



Security

24/7 CCTV monitoring



HVAC

Monday – Friday:
8am–5pm



Building history

Built in 2019



Elevators

2 passenger elevators



Fire strategy

Fully-sprinklered floors



Building size

5 stories

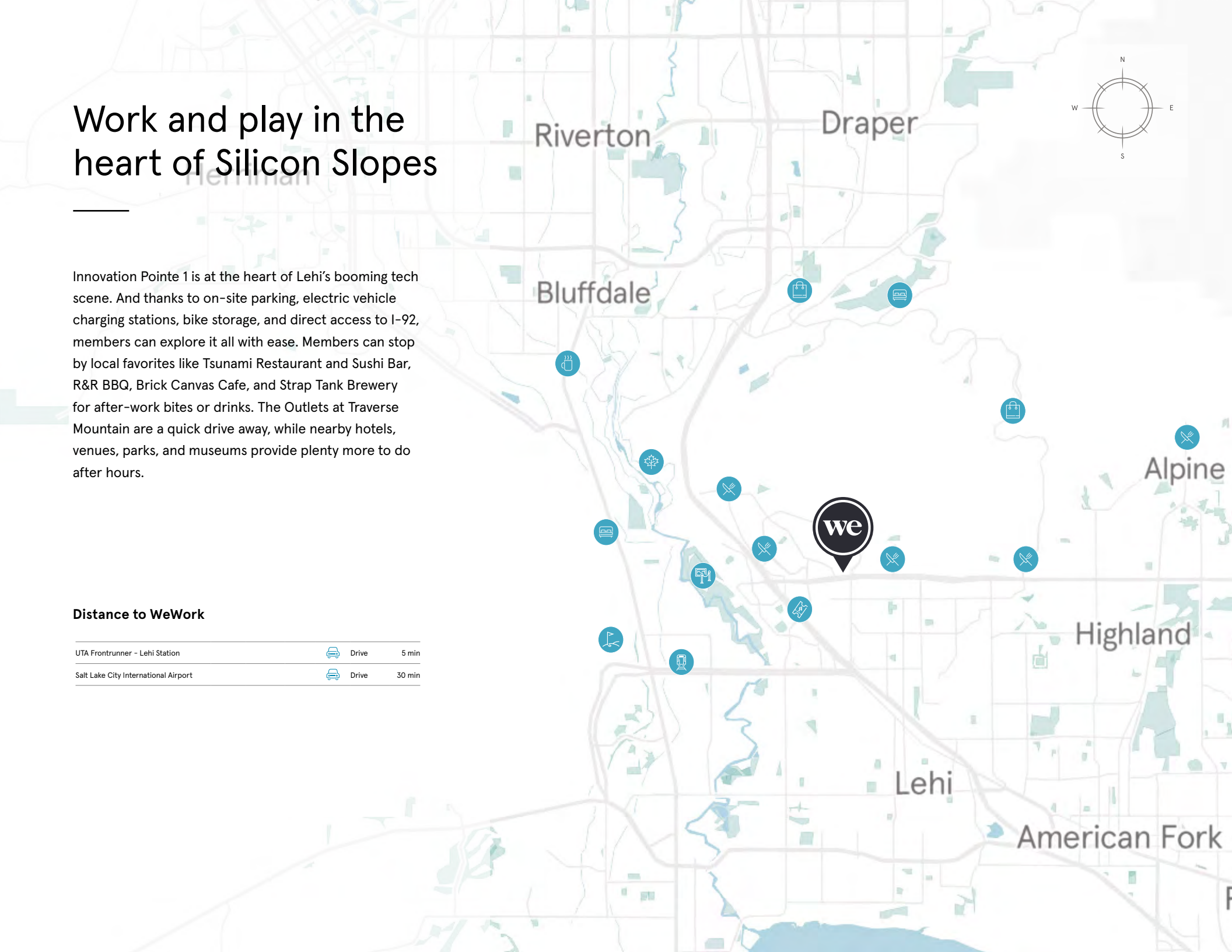
138,000 SF

Work and play in the heart of Silicon Slopes

Innovation Pointe 1 is at the heart of Lehi's booming tech scene. And thanks to on-site parking, electric vehicle charging stations, bike storage, and direct access to I-92, members can explore it all with ease. Members can stop by local favorites like Tsunami Restaurant and Sushi Bar, R&R BBQ, Brick Canvas Cafe, and Strap Tank Brewery for after-work bites or drinks. The Outlets at Traverse Mountain are a quick drive away, while nearby hotels, venues, parks, and museums provide plenty more to do after hours.

Distance to WeWork

UTA Frontrunner - Lehi Station	 Drive	5 min
Salt Lake City International Airport	 Drive	30 min



4th Floor

34,424 RSF



9

MEETING ROOM(S)

6

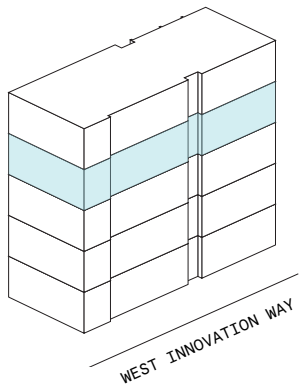
SHARED WORKSPACE(S)

LEGEND

- MEETING ROOM
- SHARED WORKSPACE
- DEDICATED SPACE



WEST INNOVATION WAY



4th Floor

34,424 RSF

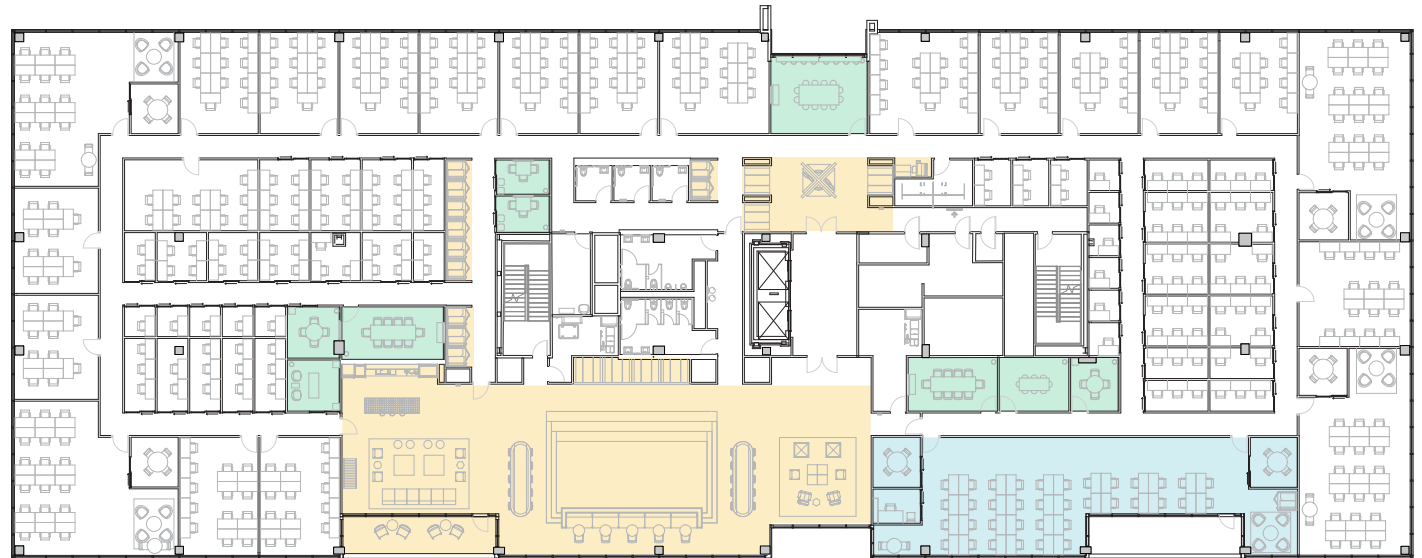
3,980 RSF Suite 04-153

2

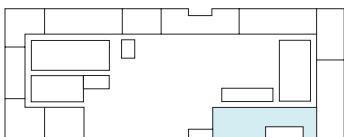
MEETING ROOM(S)

1

PRIVATE OFFICE(S)



WEST INNOVATION WAY



WEST INNOVATION WAY

Suite 04-153

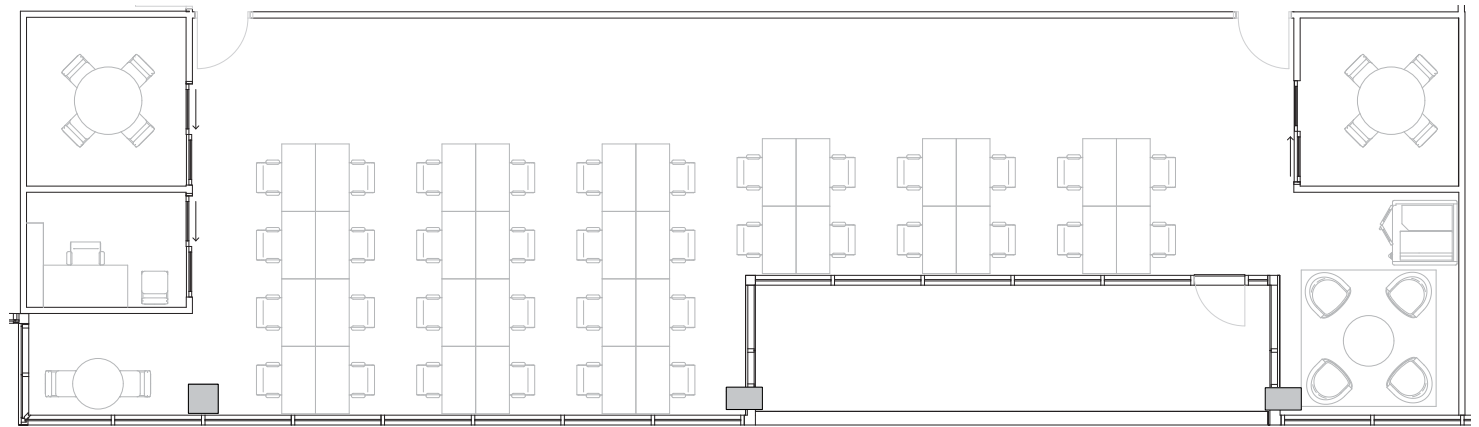
4th Floor

2

MEETING ROOM(S)

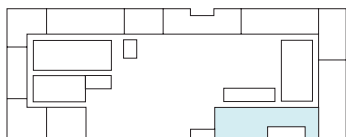
1

PRIVATE OFFICE(S)



3,980 RSF

RENTABLE AREA



WEST INNOVATION WAY

5th Floor

27,074 RSF



10

MEETING ROOM(S)

6

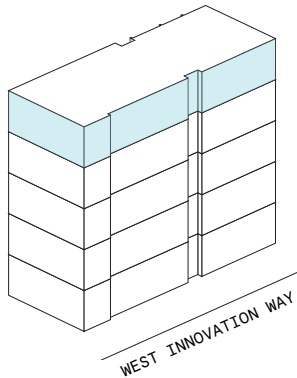
SHARED WORKSPACE(S)

LEGEND

- MEETING ROOM
- SHARED WORKSPACE
- DEDICATED SPACE



WEST INNOVATION WAY



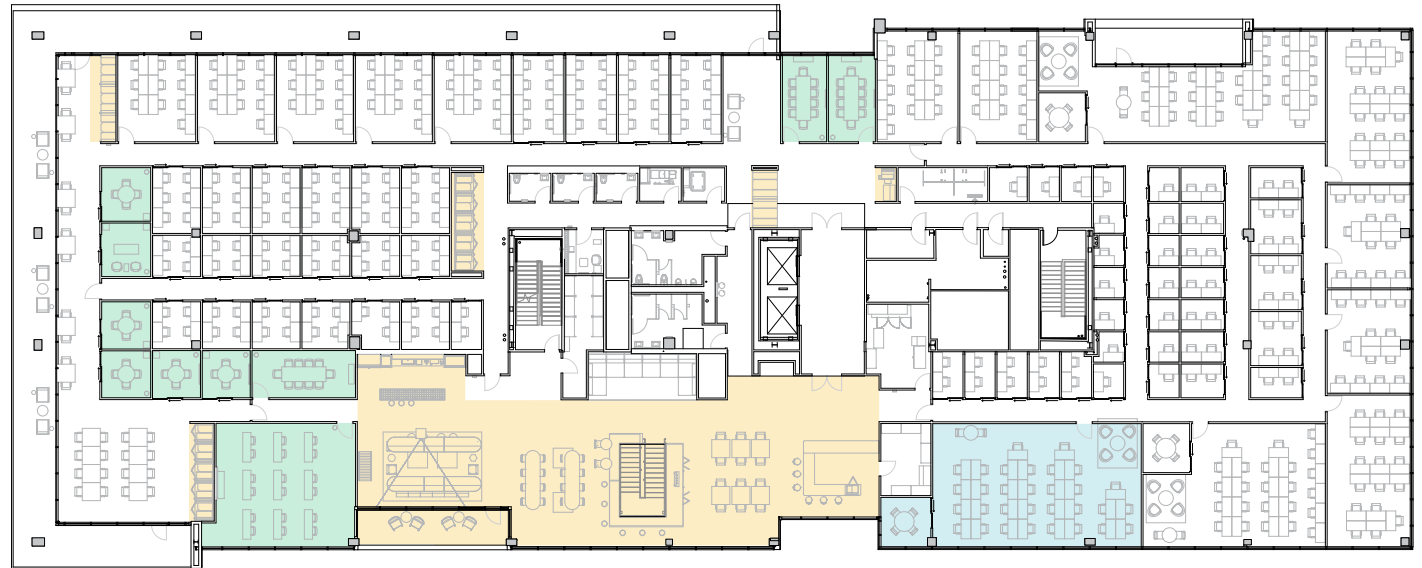
5th Floor

27,074 RSF

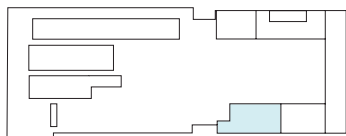
2,767 RSF Suite 05-106

1

MEETING ROOM(S)



WEST INNOVATION WAY



WEST INNOVATION WAY

Suite 05-106

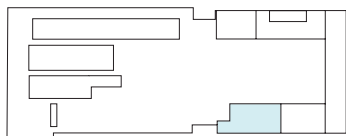
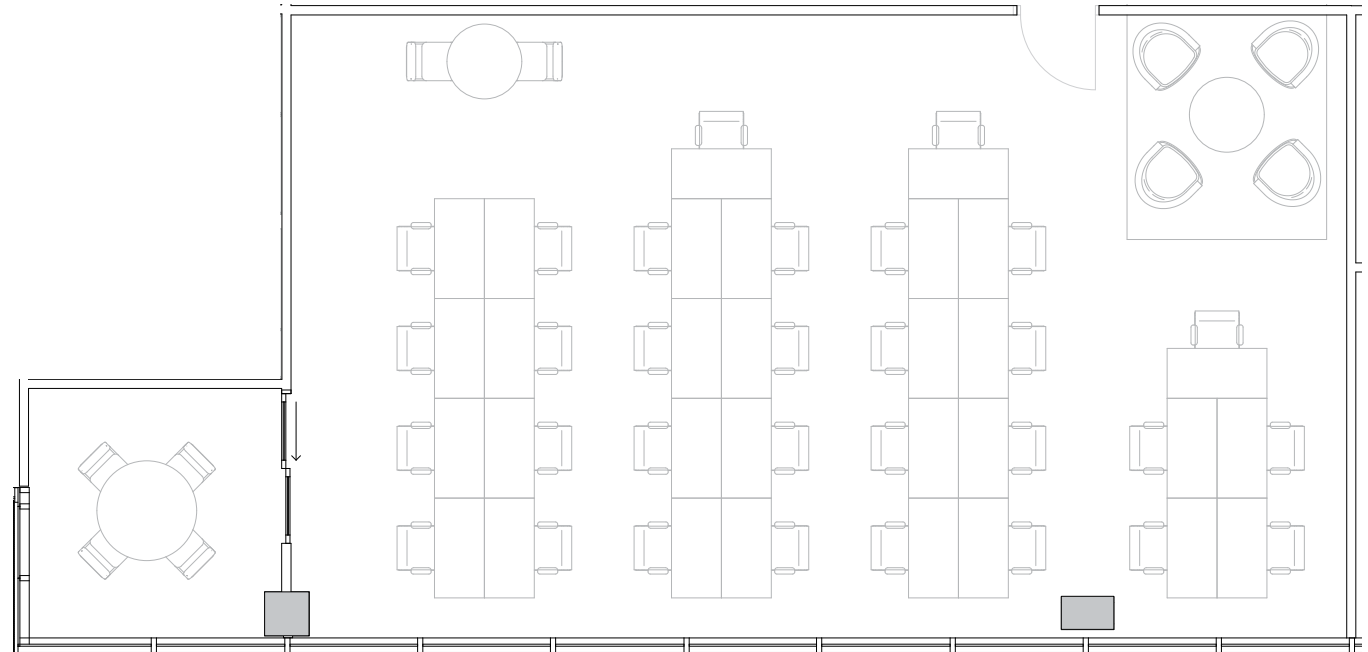
5th Floor

1

MEETING ROOM(S)

2,767 RSF

RENTABLE AREA



WEST INNOVATION WAY

5th Floor

27,074 RSF

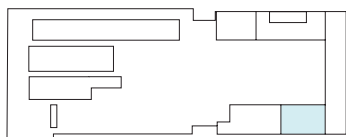
2,196 RSF Suite 05-121

1

MEETING ROOM(S)



WEST INNOVATION WAY



WEST INNOVATION WAY

Suite 05-121

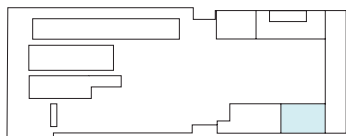
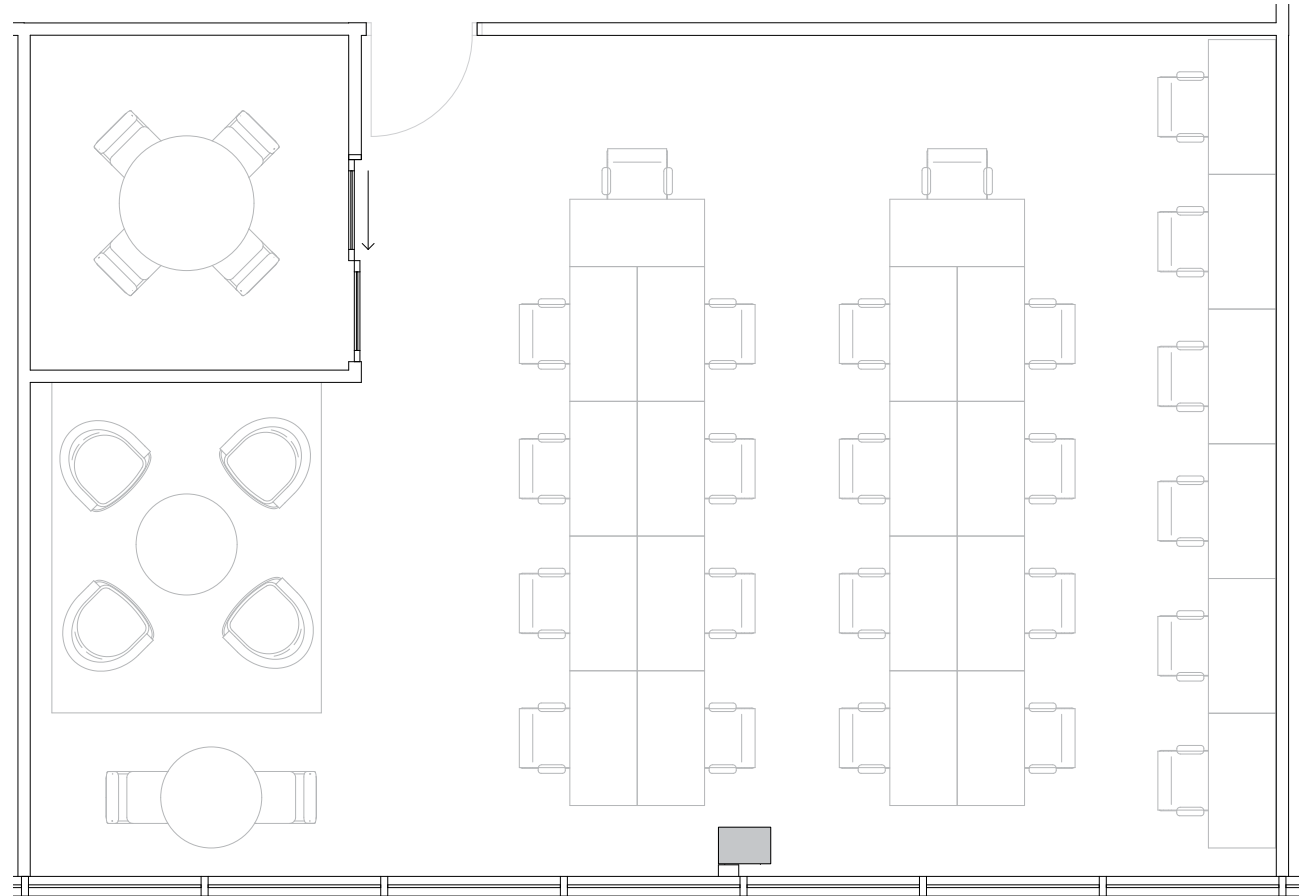
5th Floor

1

MEETING ROOM(S)

2,196 RSF

RENTABLE AREA



WEST INNOVATION WAY

5th Floor

27,074 RSF

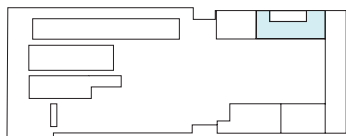
2,520 RSF Suite 05-138

1

MEETING ROOM(S)



WEST INNOVATION WAY



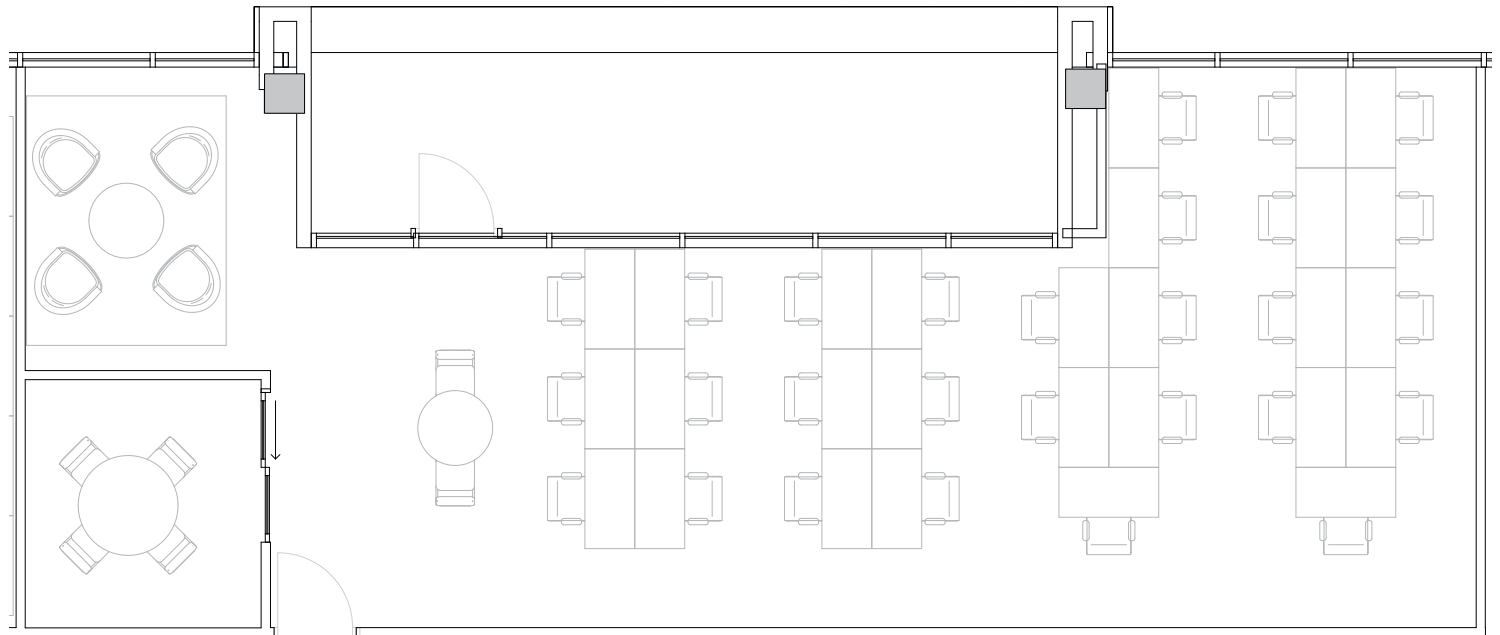
WEST INNOVATION WAY

Suite 05-138

5th Floor

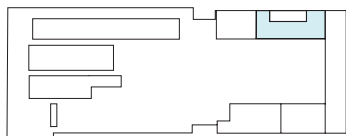
1

MEETING ROOM(S)



2,520 RSF

RENTABLE AREA



WEST INNOVATION WAY

Contact

Complete the form [linked here](#) to book a tour or connect with one of our team members.

