



Gateway 6

460 West 50 North

Space
availability
summary

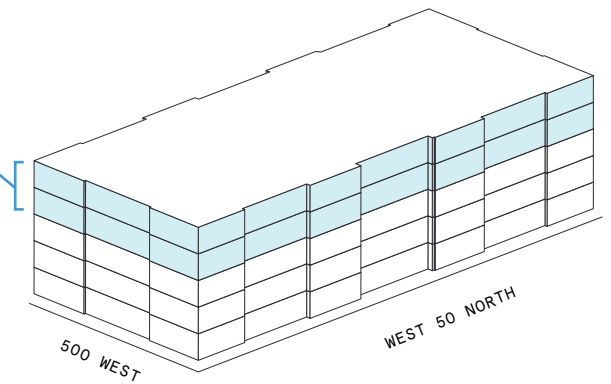
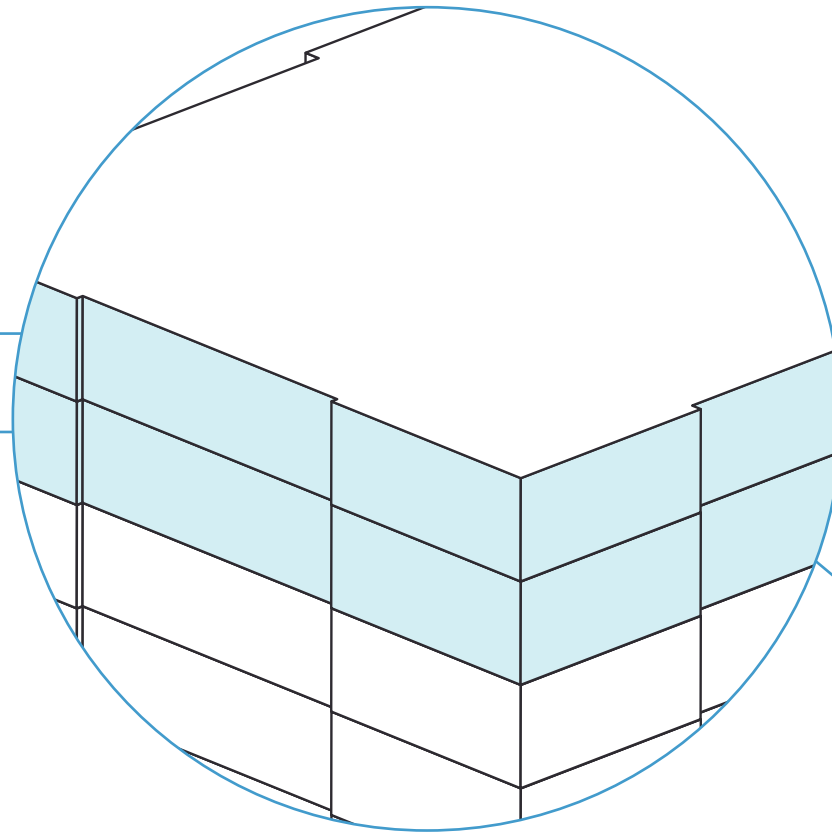
WeWork @ 460 West 50 North
Salt Lake City, UT

wework

VIEW VIRTUAL TOUR

5th Floor 18,675 RSF

4th Floor 22,094 RSF



41,068 RSF

TOTAL WEWORK RSF

Gateway 6

At a glance

Workspaces designed for productivity and creativity with flexible size & term

Dedicated, private offices available from 72 to 11,150 RSF

Move-in ready suites furnished & wired

5

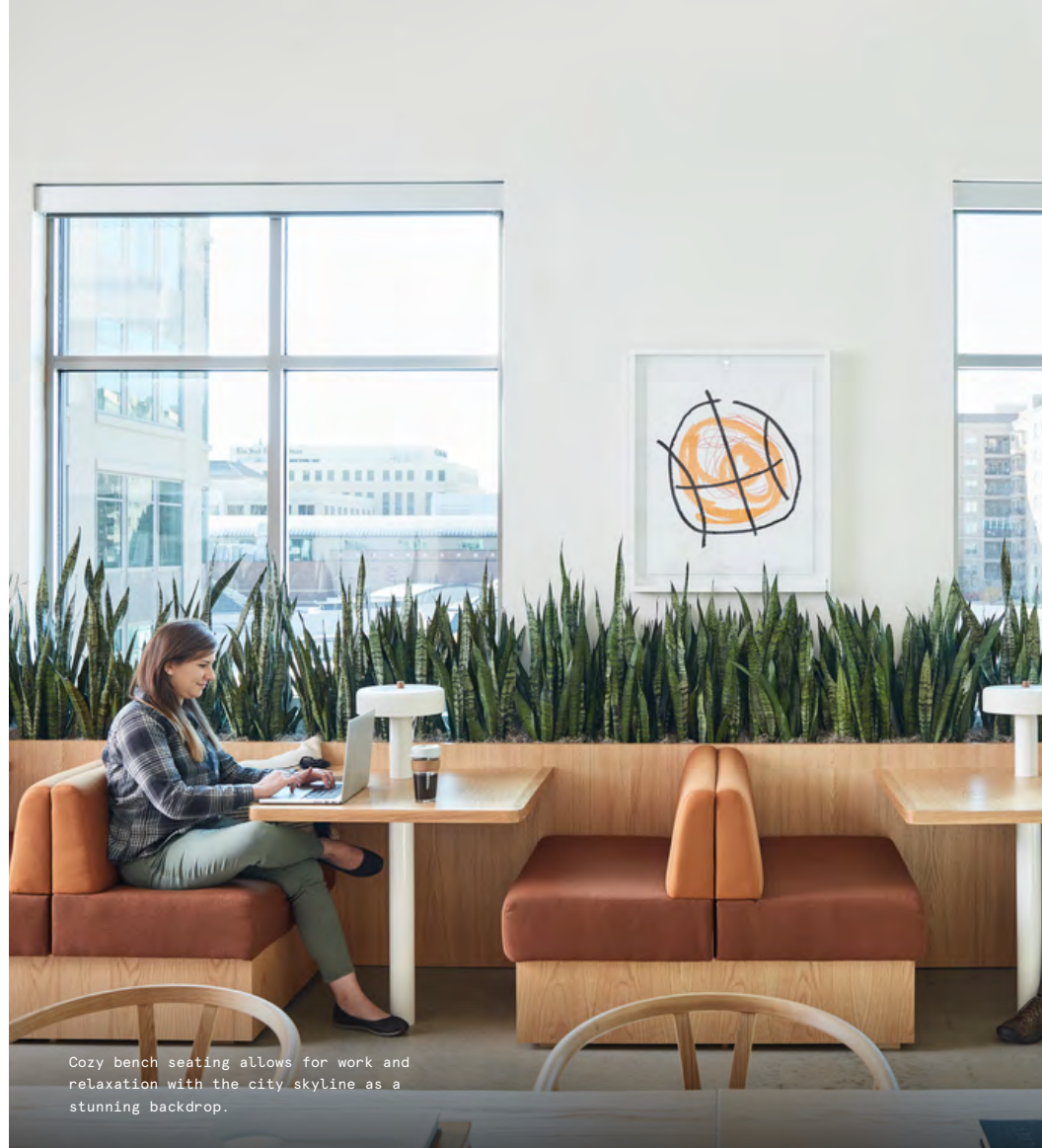
TOTAL BUILDING FLOORS

102,390

TOTAL BUILDING SQ FT



Inlaid floor-to-ceiling glass doors give way to this bright meeting room, featuring an expansive conference table and plenty of seating.



Cozy bench seating allows for work and relaxation with the city skyline as a stunning backdrop.

A spacious, modern workspace in the heart of downtown Salt Lake City

Built in 2012, Gateway 6 is a five story, 102,390 square foot Class-A building. Both Energy Star and LEED Silver certified, this eco-conscious building boasts sprawling windows and a wide-open floor plan. WeWork's two floors in Gateway 6 include a mix of light-filled lounges, sleek private offices, bright, airy meeting rooms, and fully stocked pantries. With a natural color palette and ample sunlight, this warm, welcoming office is sure to inspire connection, creativity, and productivity.



Cherry wood bookshelves and cushioned lounge chairs create a library space perfect for taking a break with a good book.

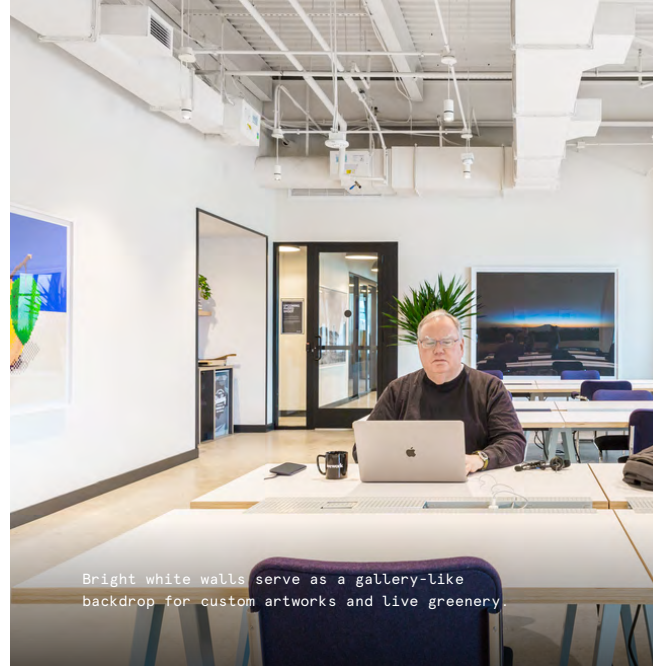


Spacious tables with abundant seating dot this space's wide-open floor plan.

Light, bright, and inviting

High ceilings, oversized windows, and polished concrete floors soften this bright, light-filled space's industrial feel. Marrying sleek modernity with a cozy vintage feel, a mix of natural materials, plush textiles, and muted warm and cool tones gives this space the atmosphere of a high-end creative studio.

- Industrial details like exposed polished concrete flooring are warmed with soft textiles and rich hardwood bookshelves, desks, and seating
- An open, industrial staircase with exposed steel stringers and glass railing connects different levels and serves as a visual focal point
- Colorful rugs overlaid with sisal rugs complement pops of blue and beige in the space's vintage-inspired furniture



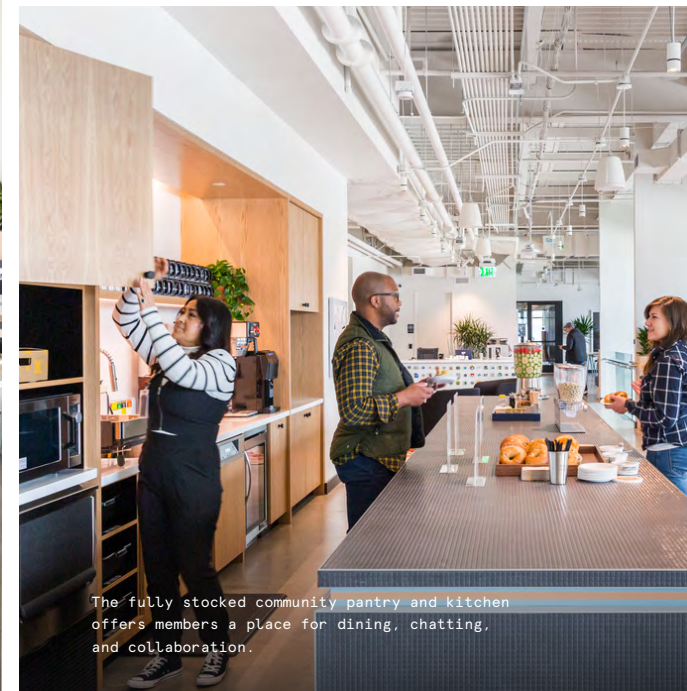
Bright white walls serve as a gallery-like backdrop for custom artworks and live greenery.



This lounge brings the outdoors in with oversized windows and lush potted plants, while custom artwork and comfy furnishings welcome visitors to the space.



Sky-high ceilings with pendant lighting and exposed whitewashed ductwork give this space a bright, open feel.



The fully stocked community pantry and kitchen offers members a place for dining, chatting, and collaboration.



On-site amenities

- Electronic keycard access
- Business-class printers
- Stocked pantry
- US mail drop
- On-site staff
- Meeting rooms
- New parent's room
- Phone booths
- Event space
- Classroom space
- Dog-friendly spaces
- On-site parking
- Supplemental HVAC and electric
- Access to gym within the Gateway Mall

Building specifications



Hours of operation

Monday - Friday: 8am-5pm



Security

24/7 security

24/7 CCTV monitoring



Certifications

Energy Star certified



Building history

Built in 2012



Elevators

2 passenger elevators



HVAC

Monday - Friday: 7am-6pm

Saturday: 8am-1pm



Building size

5 stories

102,390 SF



Fire strategy









Fully-sprinklered floors

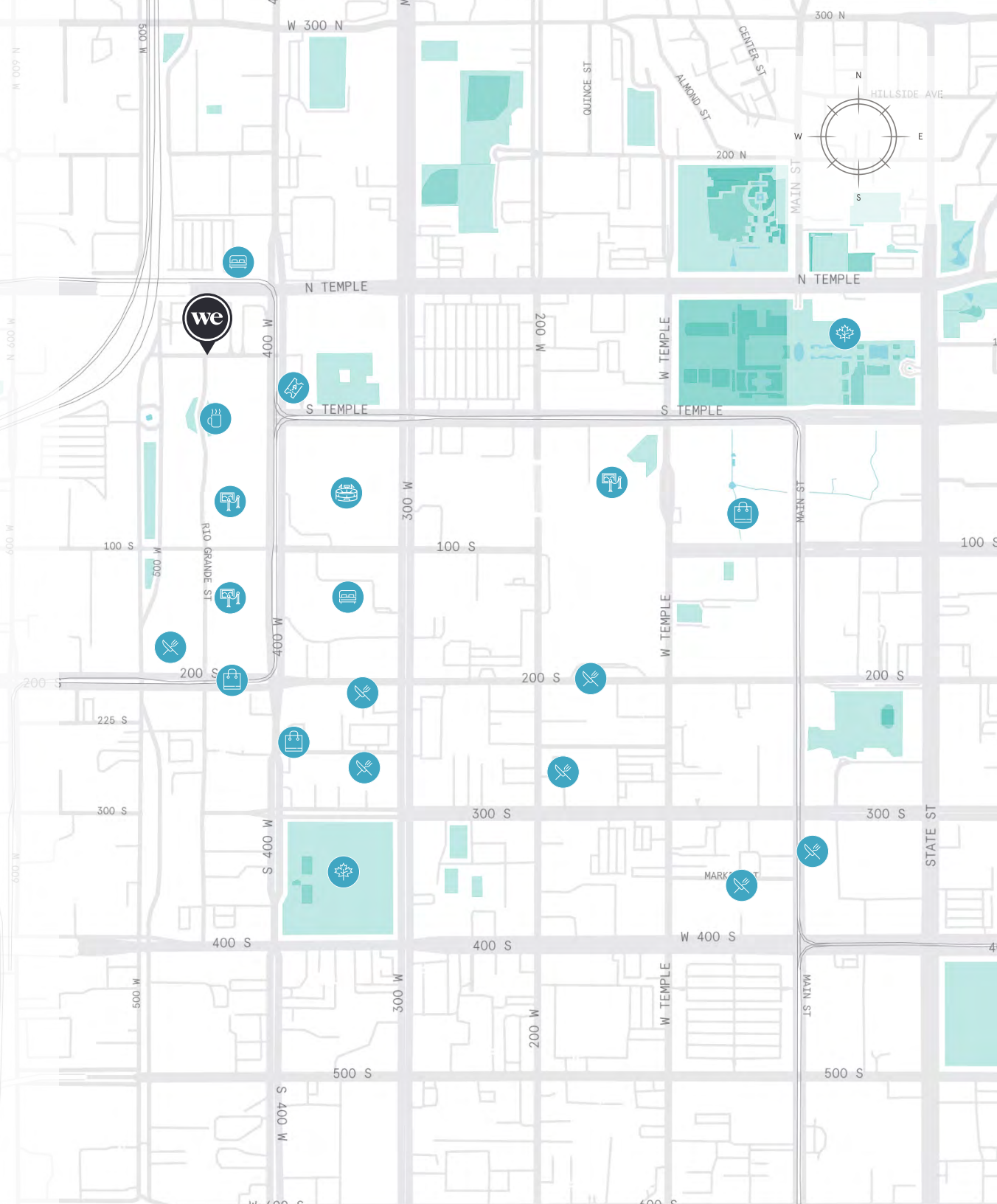
Downtown SLC at your doorstep

Located in the Gateway complex at the intersection of North Temple and North 400 West, Gateway 6 is truly at the heart of Salt Lake City. Minutes away from Trax stations and the Salt Lake City International Airport, this office is optimized for commuters and urban convenience.

Members can enjoy a variety of cafes and restaurants, like the Rose Establishment, Takashi, and Caputo's Market & Deli. Catch a game at the Vivint Smart Home Arena—home of the Utah Jazz—just blocks away, or see live music at The Depot. Pioneer Park and Temple Square are perfect for fresh air and lunchtime strolls, while museums like the Utah Museum of Contemporary Art provide an artistic break from the workday.

Distance to WeWork

460 West 50 North Parking Lot		Walk	1 min
Frontrunner - North Temple Station		Walk	3 min
GREENBike Station - 400 West South Temple Station		Walk	3 min
I-15 Highway Southbound		Drive	5 min
I-15 Highway Northbound		Drive	5 min
Trax - Planetarium Station		Walk	6 min
Trax - Arena Station		Walk	8 min
Salt Lake City International Airport		Drive	10 min



4th Floor

22,094 RSF






1

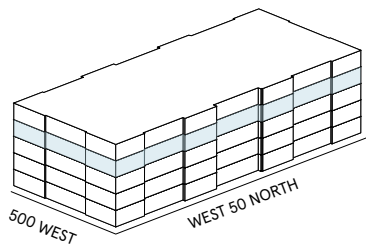
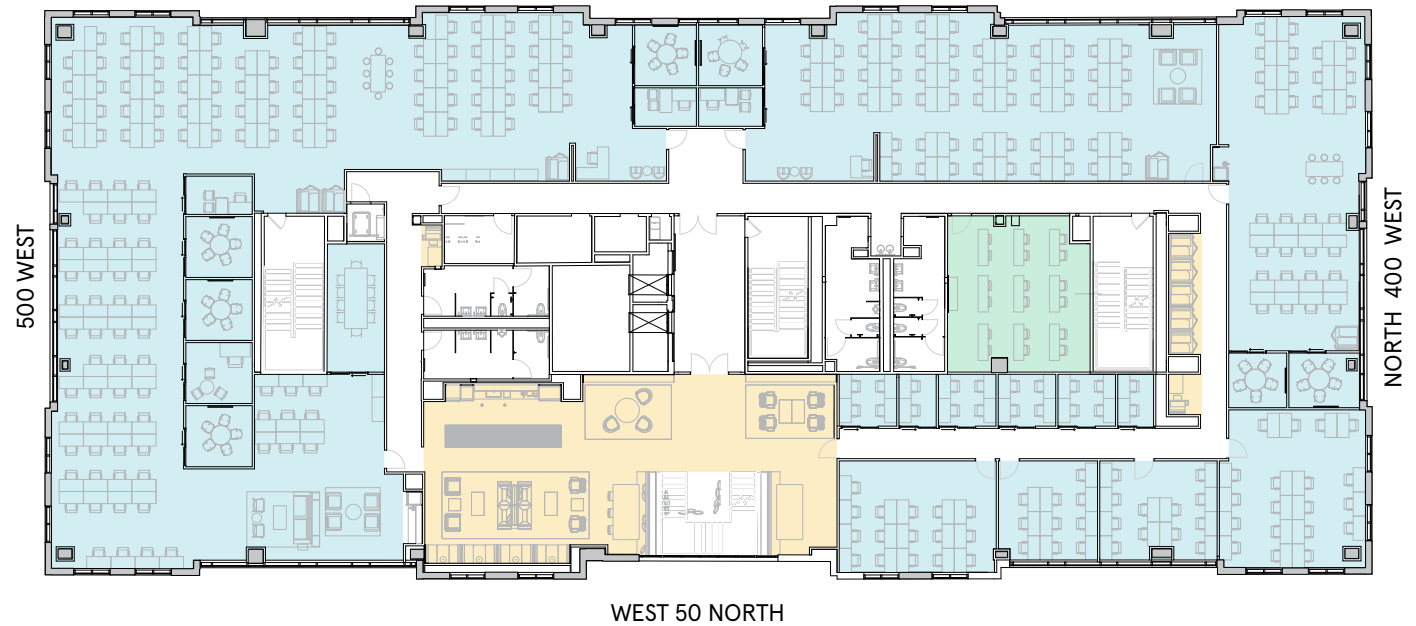
MEETING ROOM(S)

4

SHARED WORKSPACE(S)

LEGEND

-  MEETING ROOM
-  SHARED WORKSPACE
-  DEDICATED SPACE



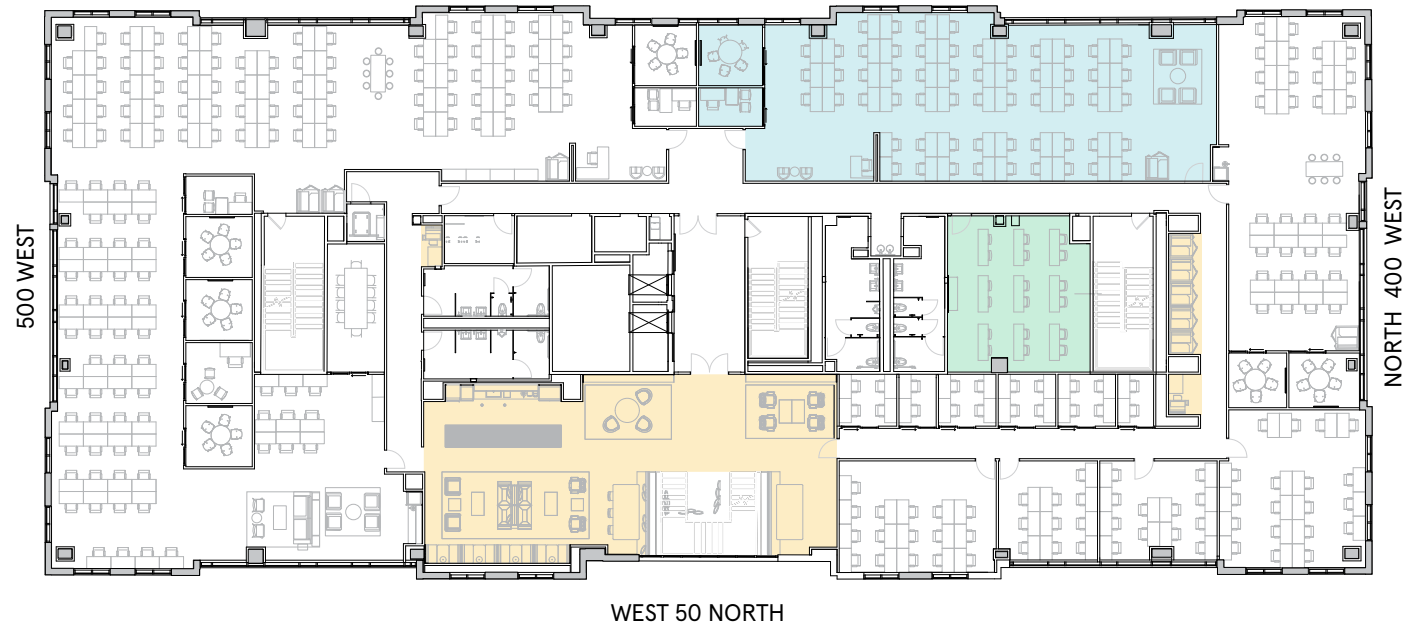
4th Floor

22,094 RSF

4,211 RSF Suite 04W111



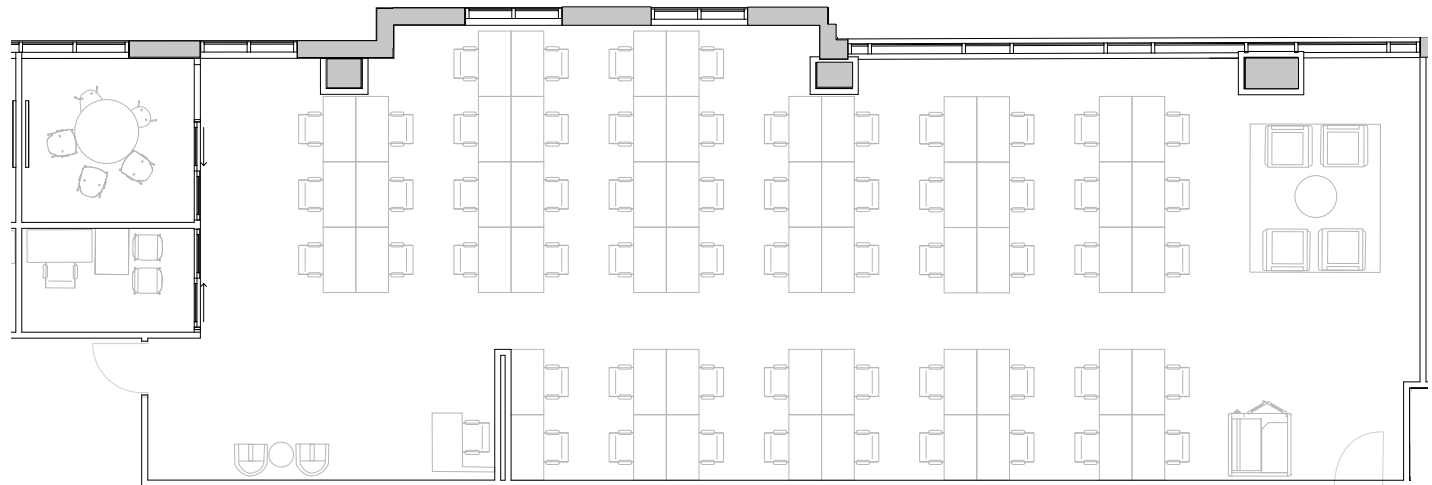
- 1 MEETING ROOM(S)
- 1 PRIVATE OFFICE(S)



Suite 04W111

4th Floor

- 1 MEETING ROOM(S)
- 1 PRIVATE OFFICE(S)



4,211 RSF
RENTABLE AREA



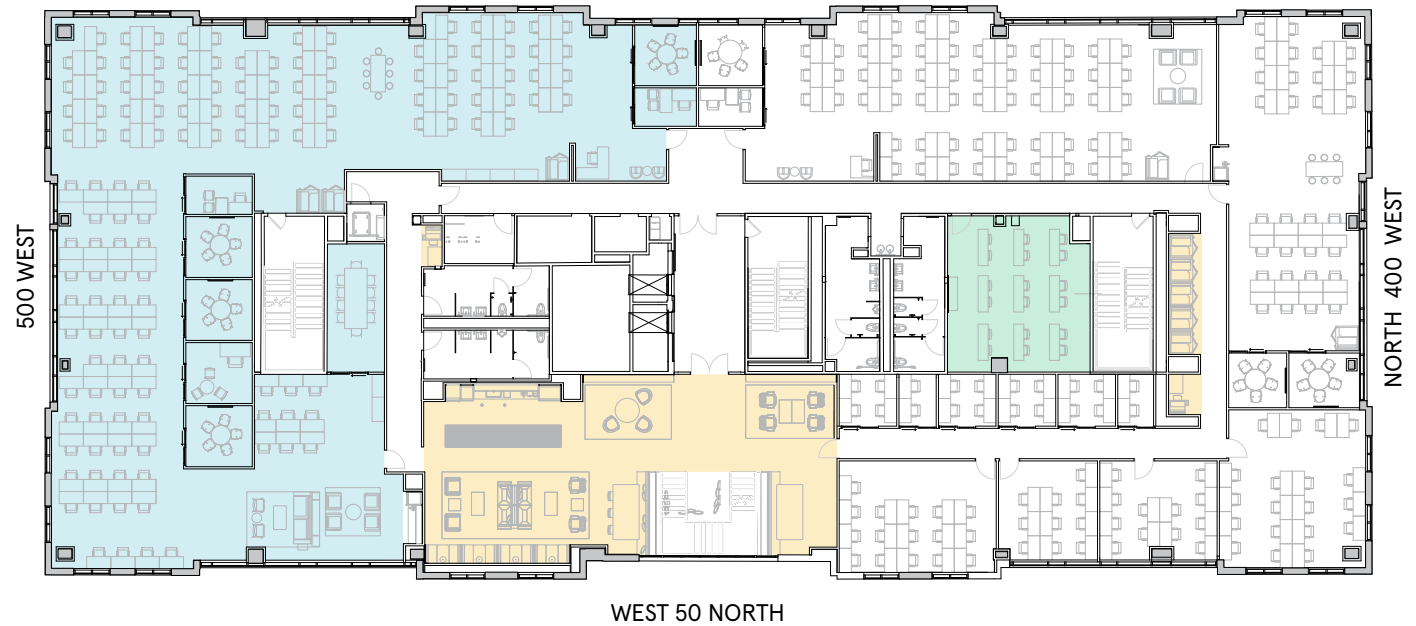
4th Floor

22,094 RSF

11,150 RSF Suite 04W112



- 5 MEETING ROOM(S)
- 2 PRIVATE OFFICE(S)



[VIEW VIRTUAL TOUR](#)

Suite 04W112

4th Floor

5
MEETING ROOM(S)

3
PRIVATE OFFICE(S)

11,150 RSF
RENTABLE AREA

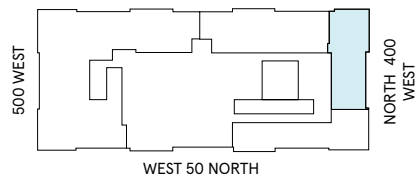


4th Floor

22,094 RSF

2,793 RSF Suite 04W113

2
MEETING ROOM(S)



Suite 04W113

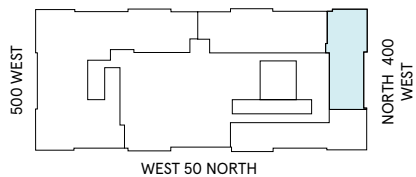
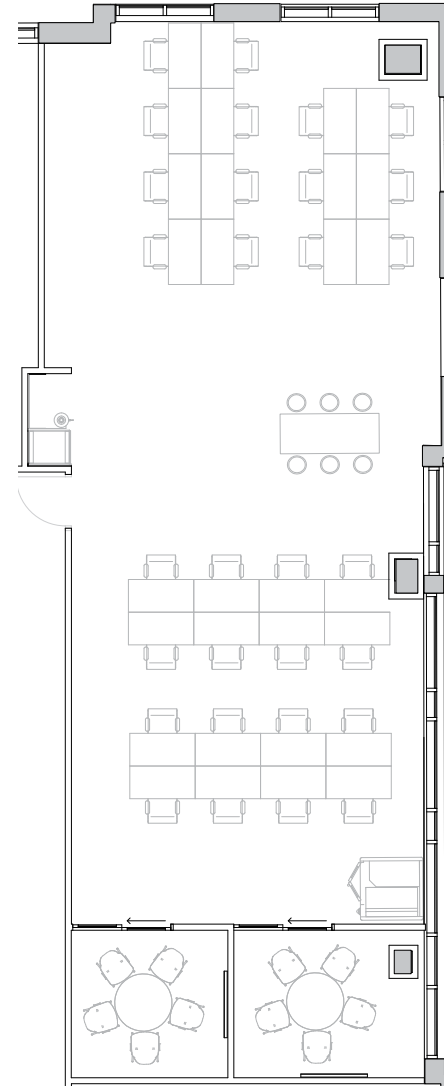
4th Floor

2

MEETING ROOM(S)

2,793 RSF

RENTABLE AREA



5th Floor

18,675 RSF






6

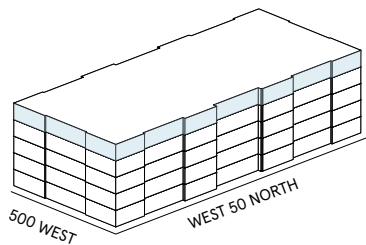
MEETING ROOM(S)

10

SHARED WORKSPACE(S)

LEGEND

-  MEETING ROOM
-  SHARED WORKSPACE
-  DEDICATED SPACE



5th Floor

18,675 RSF

7,214 RSF Suite 05W137



- 3 MEETING ROOM(S)
- 1 PRIVATE OFFICE(S)



Suite 05W137

5th Floor

3

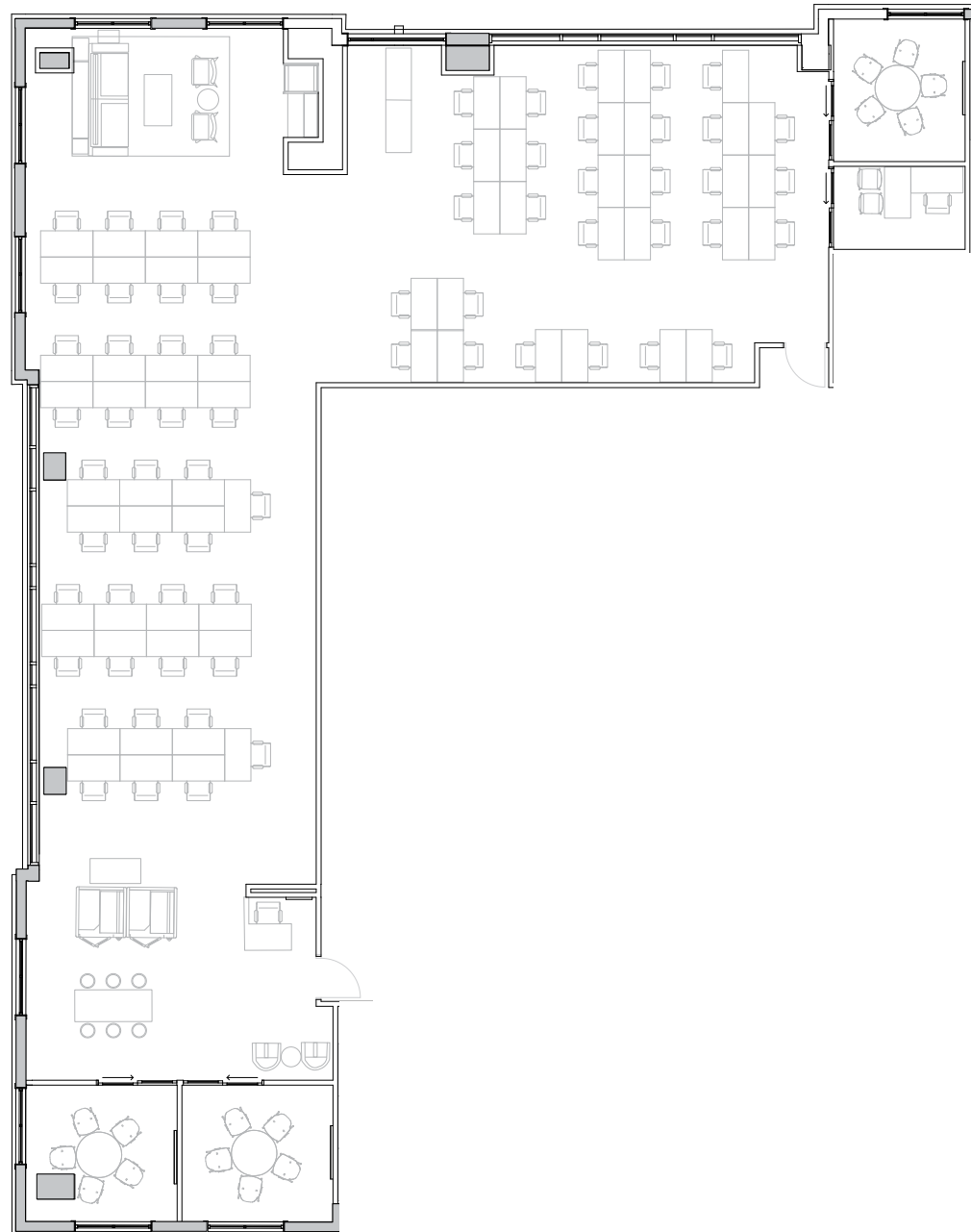
MEETING ROOM(S)

1

PRIVATE OFFICE(S)

7,214 RSF

RENTABLE AREA



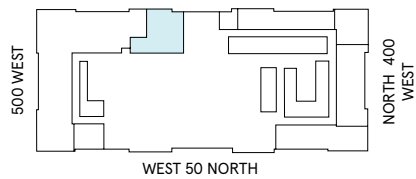
5th Floor

18,675 RSF

1,759 RSF Suite 05W145



1
MEETING ROOM(S)

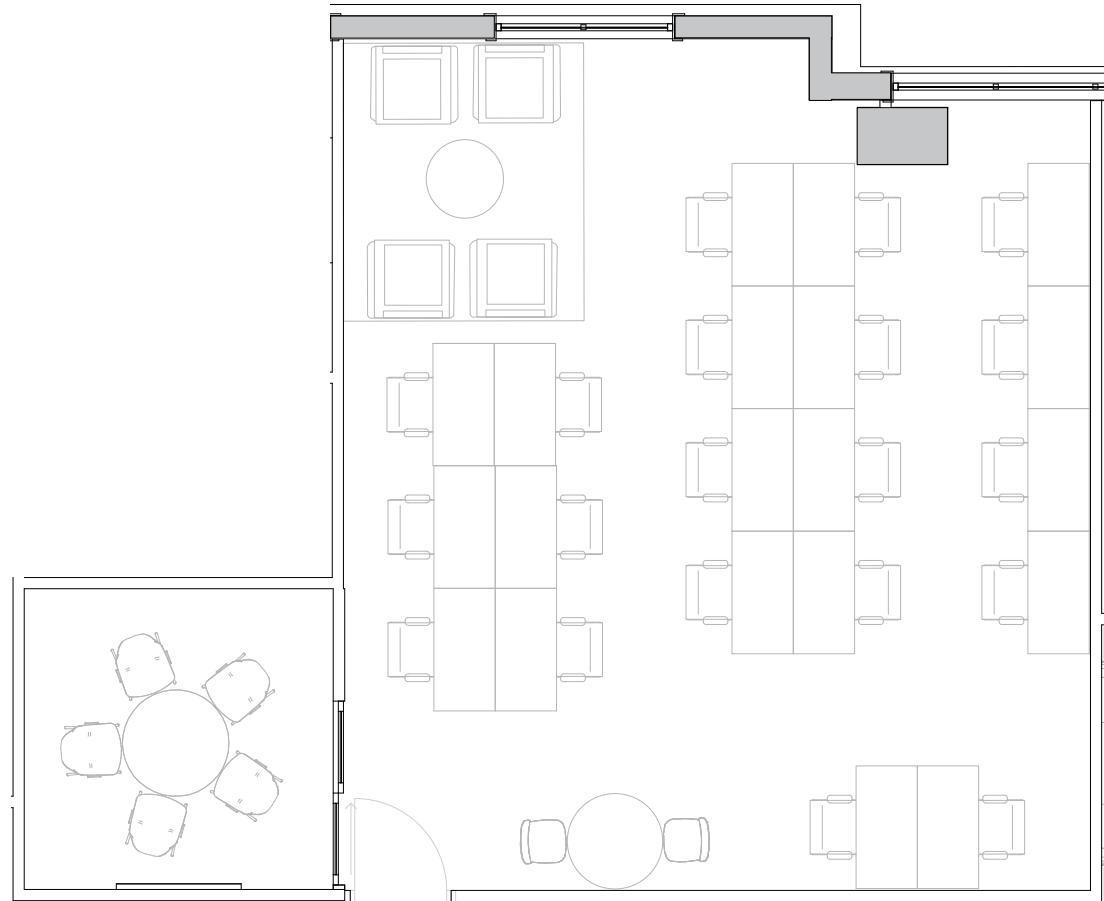


Suite 05W145

5th Floor

1
MEETING ROOM(S)

1,759 RSF
RENTABLE AREA



Contact

Complete the form [linked here](#) to book a tour or connect with one of our team members.

