



Colony Square

1175 Peachtree Street
Northeast

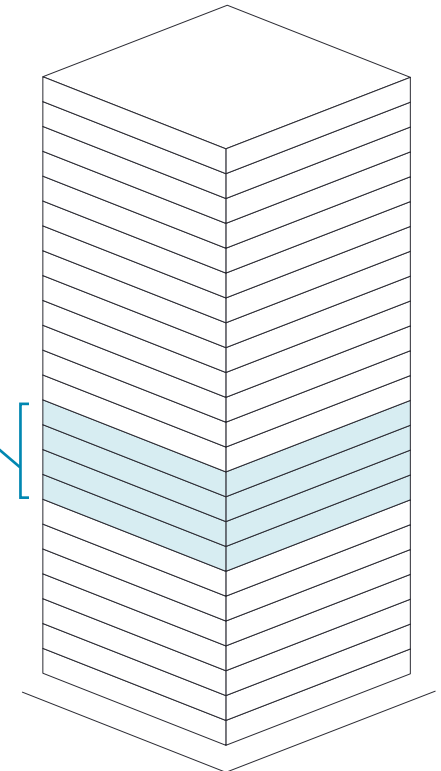
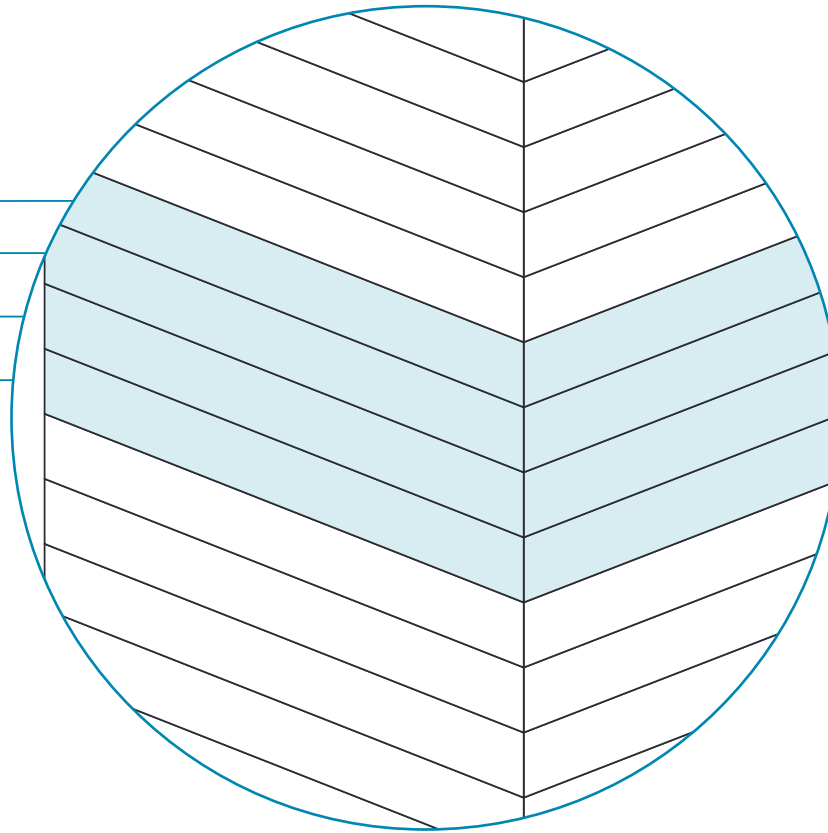
Space
availability
summary

WeWork @ 1175 Peachtree Street Northeast
Atlanta, Georgia

wework

[VIEW VIRTUAL TOUR](#)

11th Floor 15,498 RSF
10th Floor 12,908 RSF
9th Floor 15,287 RSF
8th Floor 15,467 RSF



14TH STREET NORTHEAST

59,160 RSF

TOTAL WEWORK RSF

Colony Square

At a glance

Workspaces designed for productivity and creativity with flexible size & term

Dedicated, private offices available from 49 to 1,986 RSF

Move-in ready offices furnished & wired

24

TOTAL BUILDING FLOORS

335,000

TOTAL BUILDING SQ FT

All dimensions are approximate and subject to variances. It is your obligation to independently verify the particulars of the property. WeWork reserves the right to make changes.



Open lounges with custom furnishings and ample natural lighting invite collaboration and conversation between members and teammates.



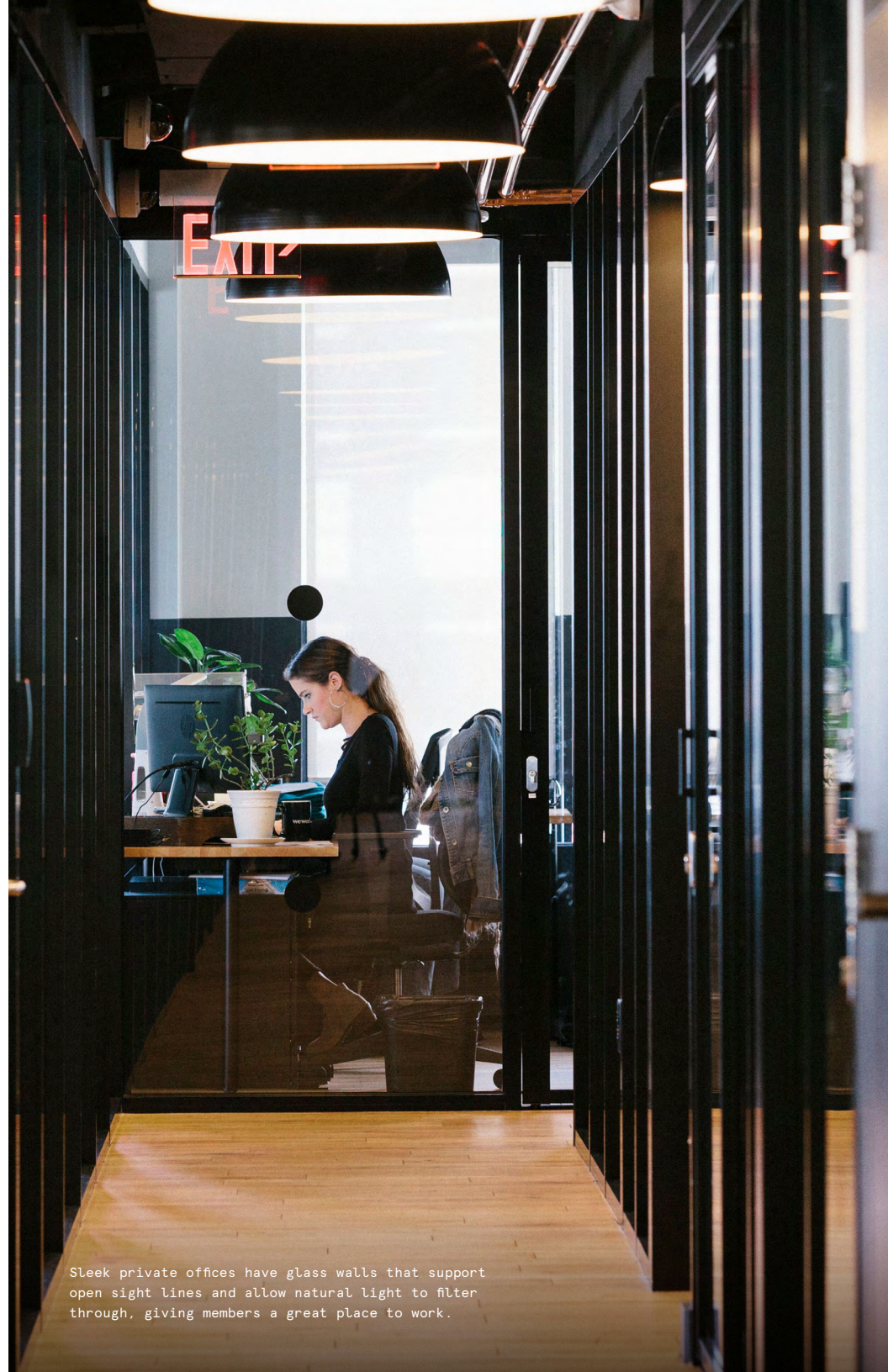
Custom millwork separating cozy seating nooks serves as the backdrop for this sleek lounge with neutral modern furnishings.

A modern high-rise at the crossroads of downtown Atlanta

1175 Peachtree Street, also known as Colony Square, sits on the corner of 14th and Peachtree Streets in Atlanta's trendy Midtown neighborhood. Designed by architect Henri Jova, this Class A Modernist development was constructed in 1972 and renovated in 2020. This mixed-use complex includes three skyscrapers (two containing offices and one housing the Hilton Curio Collection) and is the oldest of them all. WeWork's offering in this landmark space includes four floors, communal areas and dedicated private offices. With a mix of sleek offices, sun-soaked lounges, and welcoming community spaces, Colony Square is the ideal environment to spark creativity and productivity.



Members can gather on the barstools of this pantry, featuring a vertical monochrome backsplash and pendant lighting.

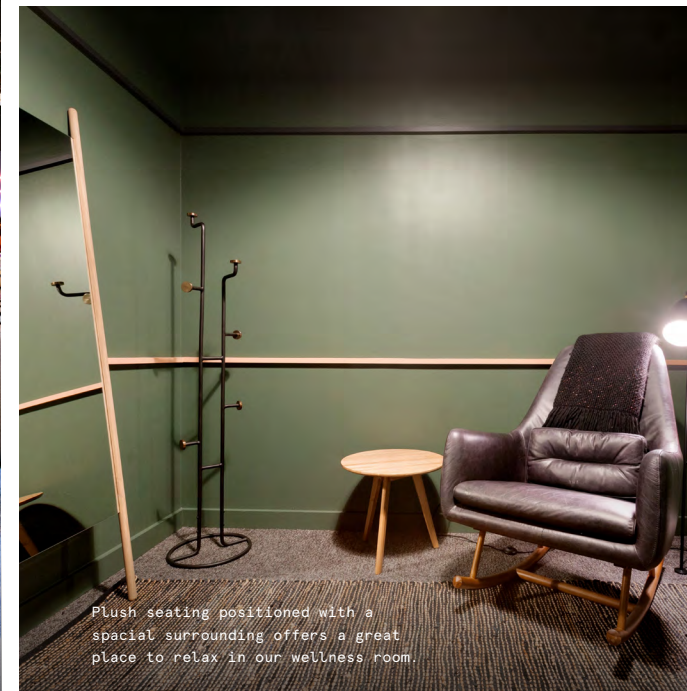
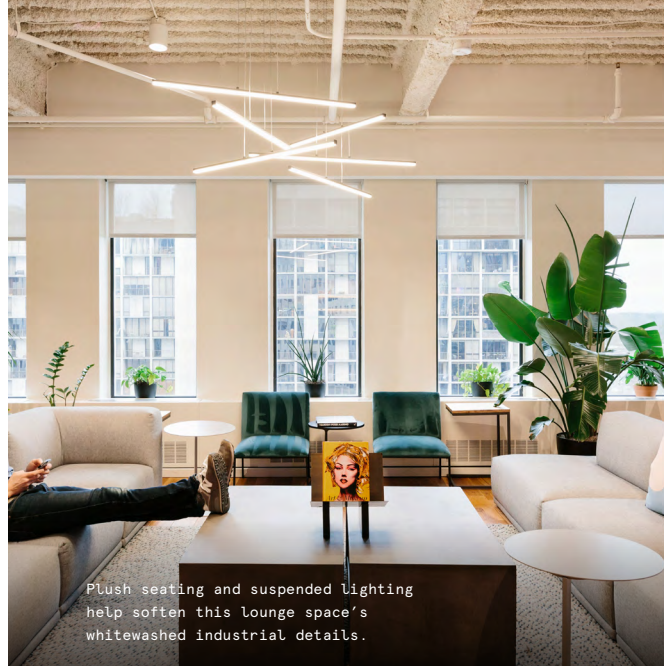


Sleek private offices have glass walls that support open sight lines and allow natural light to filter through, giving members a great place to work.

Contemporary, creative, and uniquely Atlanta

Inspired by Atlanta's unique vibrancy and creativity, 1175 Peachtree Street mixes bold colors and patterns with a combination of sleek, modern furnishings and industrial design moments. The result is a workspace that feels expressive and polished with plenty of personality.

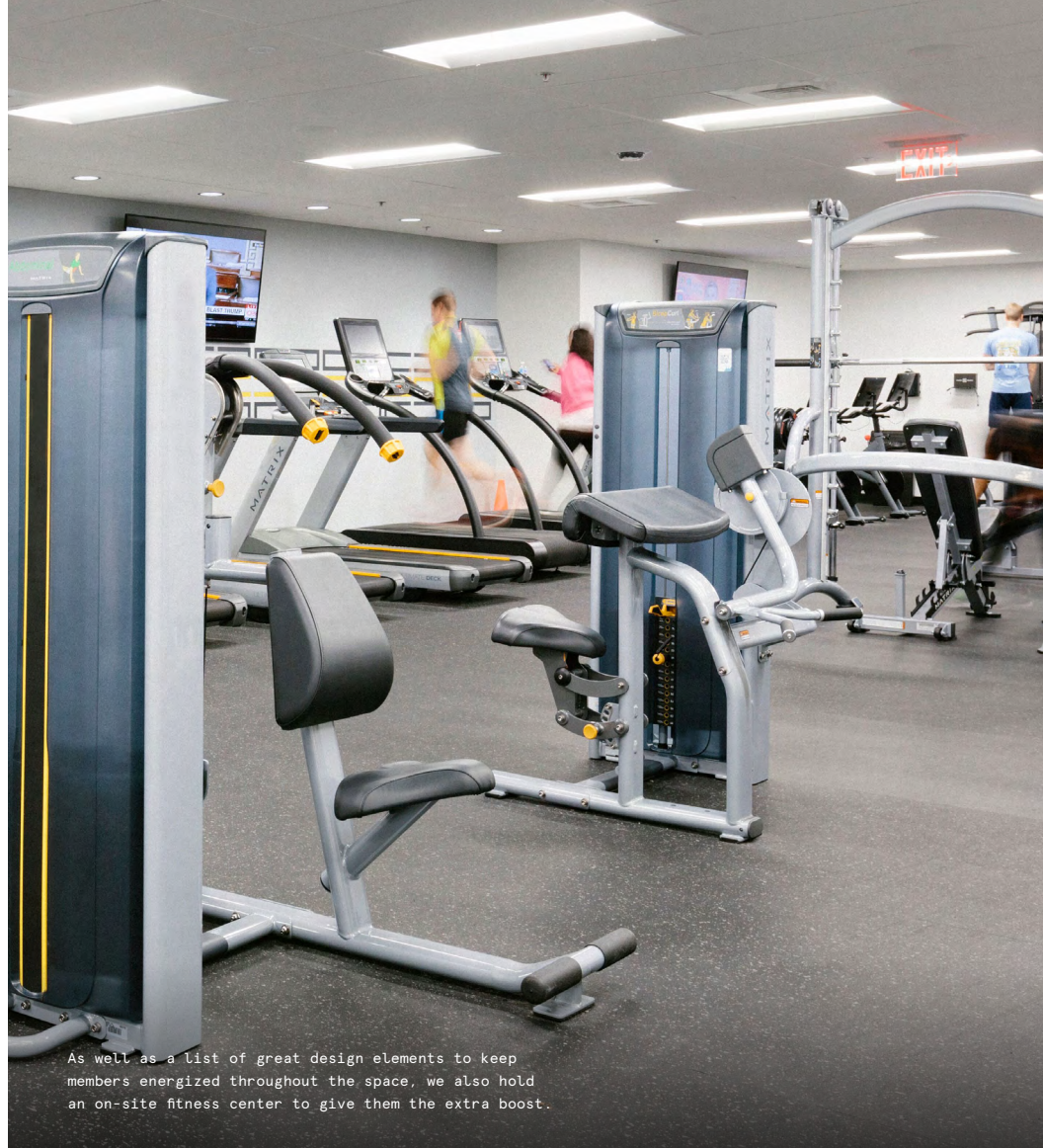
- Accent walls with custom murals pay homage to Atlanta's rich spirit and history
- A myriad of seating options invite members to connect and collaborate
- Natural wood floors and furnishings warm the space, complementing its monochromatic walls and ceilings
- High ceilings and custom pendant lighting open the space and contribute to its sleek, modernist style





On-site amenities

- 24/7 security
- Electronic keycard access
- Web-based visitor access
- Business-class printers
- Professional events and programming
- Stocked pantry
- Messenger center
- US mail drop
- On-site staff
- Meeting rooms
- New parent's room
- Phone booths
- Wellness/meditation room
- Event space
- Fitness center
- Locker room with showers
- Gender-neutral restrooms
- Outdoor space
- Dog-friendly spaces
- Bicycle storage
- On-site parking
- Access to car charging stations
- Emergency back-up power
- Supplemental HVAC and electric



Building specifications



Hours of operation

Monday – Friday: 8am–5pm



Security

24/7 security attendant



HVAC

Monday – Friday: 8am–5pm

Saturday: 9am–1pm



Building history

Built in 1974
Renovated in 2018
Designed by Henri Jova



Ceiling heights

8.5 feet slab-to-slab



Fire strategy

Fully-sprinklered floors



Building size

24 stories
335,000 SF



Elevators

3 passenger elevators
1 freight elevators

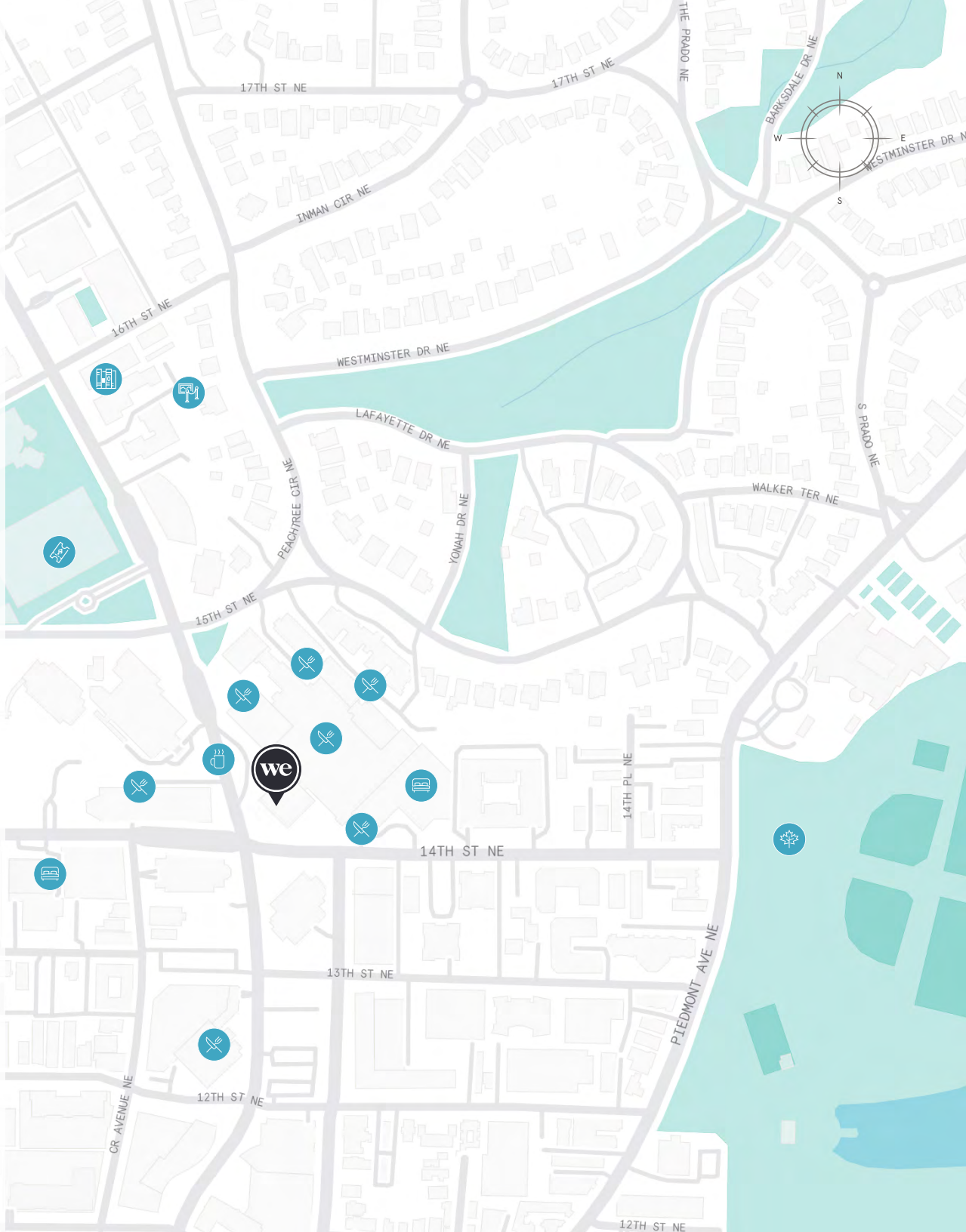
Experience the best of Midtown

Colony Square has become one of the area's most popular intersections during the workday—and with good reason. Within walking distance are dozens of trendy restaurants and bars like Sukoshi Atlanta and Jojo's Beloved Cocktail Lounge, for client lunches or post-work happy hours. Also with the Atlanta Beltline and Piedmont Park nearby, the area offers the spots for socializing with colleagues.

1175 Peachtree Street overlooks idyllic pocket parks, sculptures, and art installations. Aside from enjoying the views from the building, members can step outside and take a stroll through nearby Piedmont Park or the Atlanta Botanical Garden, attend a concert at the Fox Theater, or get inspired at the nearby High Museum of Art. Plus, commuting to Colony Square is made easy with access to I-85 and MARTA's Arts Center stop mere minutes away.

Distance to WeWork

Internal Bike Storage		Walk	2 min
Colony Square Parking Garage		Walk	2 min
MARTA Station - Arts Center		Walk	8 min
MARTA Station - Midtown		Walk	13 min
I-75/I-85 Interstate		Drive	10 min
Hartsfield Jackson Atlanta International Airport		Drive	20 min



8th Floor

15,467 RSF

6

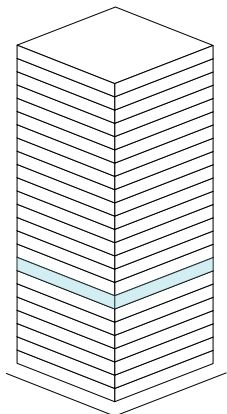
MEETING ROOM(S)

2

SHARED WORKSPACE(S)

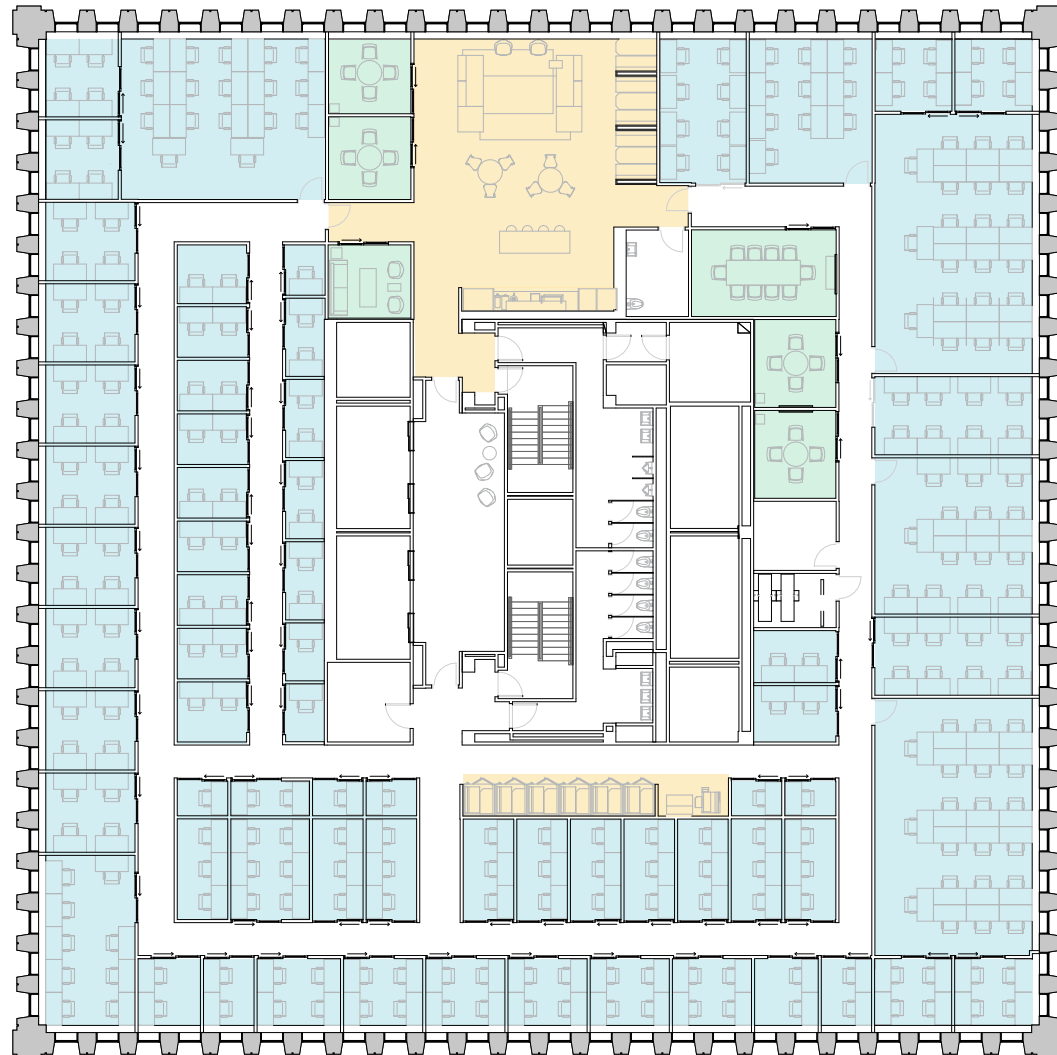
LEGEND

- MEETING ROOM
- SHARED WORKSPACE
- DEDICATED SPACE



14TH STREET NORTHEAST

PEACHTREE STREET



14TH STREET NORTHEAST



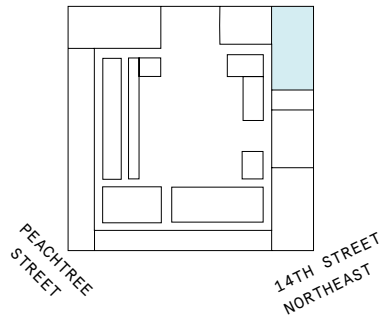
8th Floor

15,467 RSF

1,713 RSF Suite 08-103

2

PRIVATE OFFICE(S)



All dimensions are approximate and subject to variances. It is your obligation to independently verify the particulars of the property. WeWork reserves the right to make changes.

Suite 08-103

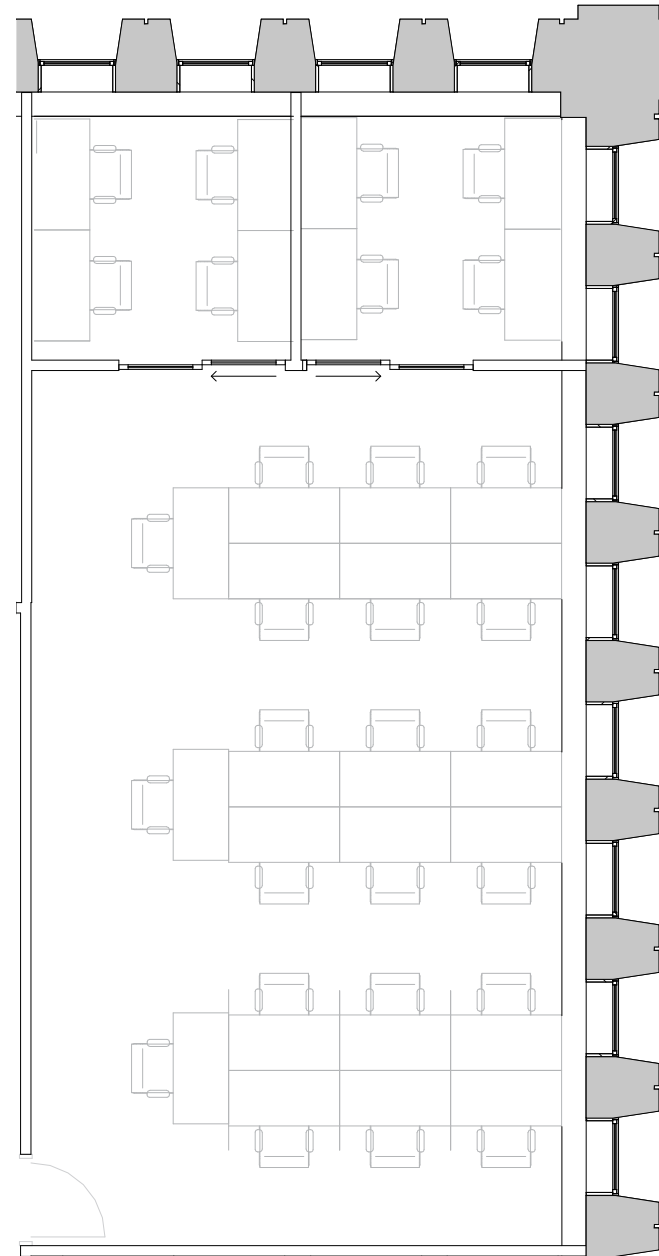
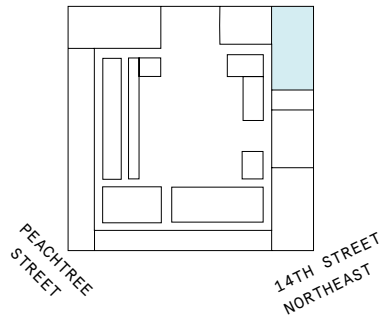
8th Floor

2

PRIVATE OFFICE(S)

1,713 RSF

RENTABLE AREA



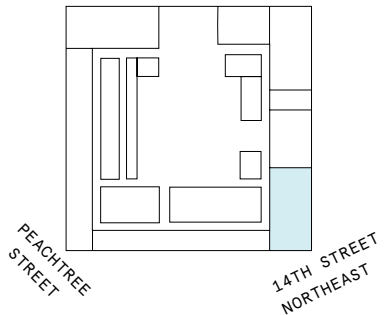
8th Floor

14,596 RSF

1,571 RSF Suite 08-109

2

PRIVATE OFFICE(S)



Suite 08-109

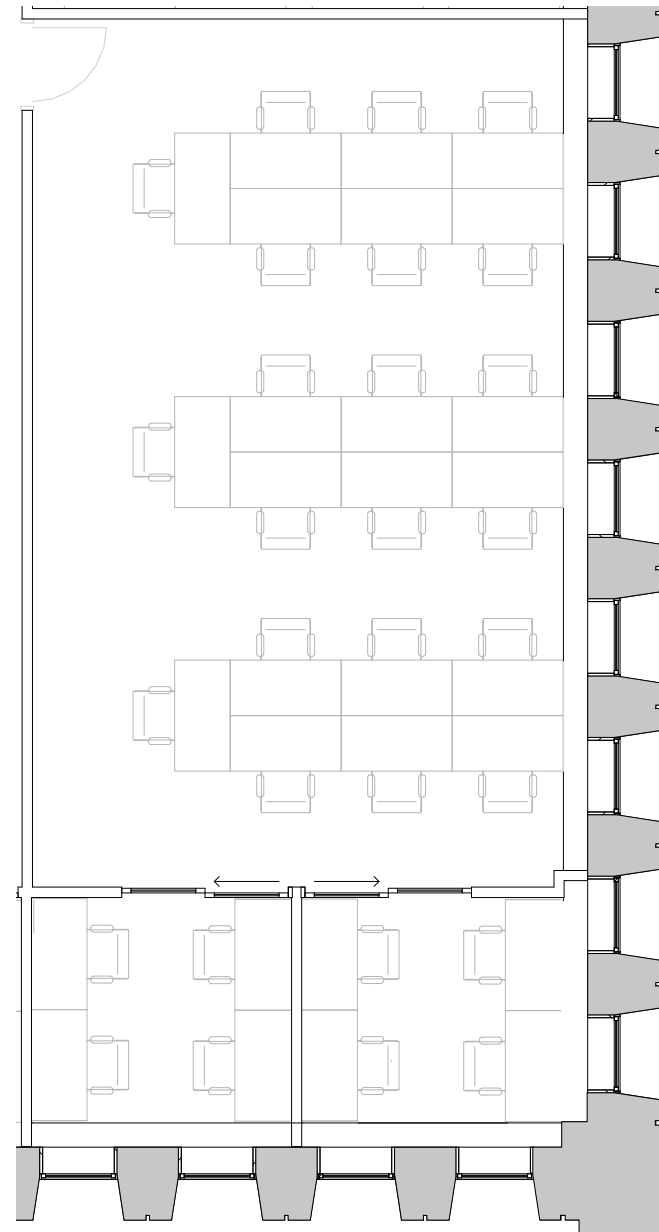
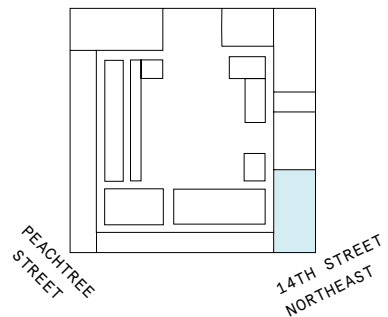
8th Floor

2

PRIVATE OFFICE(S)

1,676 RSF

RENTABLE AREA



9th Floor

15,287 RSF

6

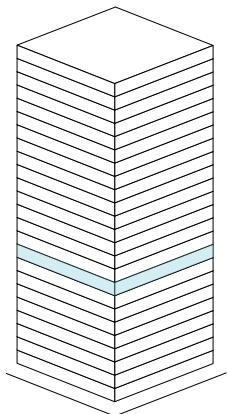
MEETING ROOM(S)

3

SHARED WORKSPACE(S)

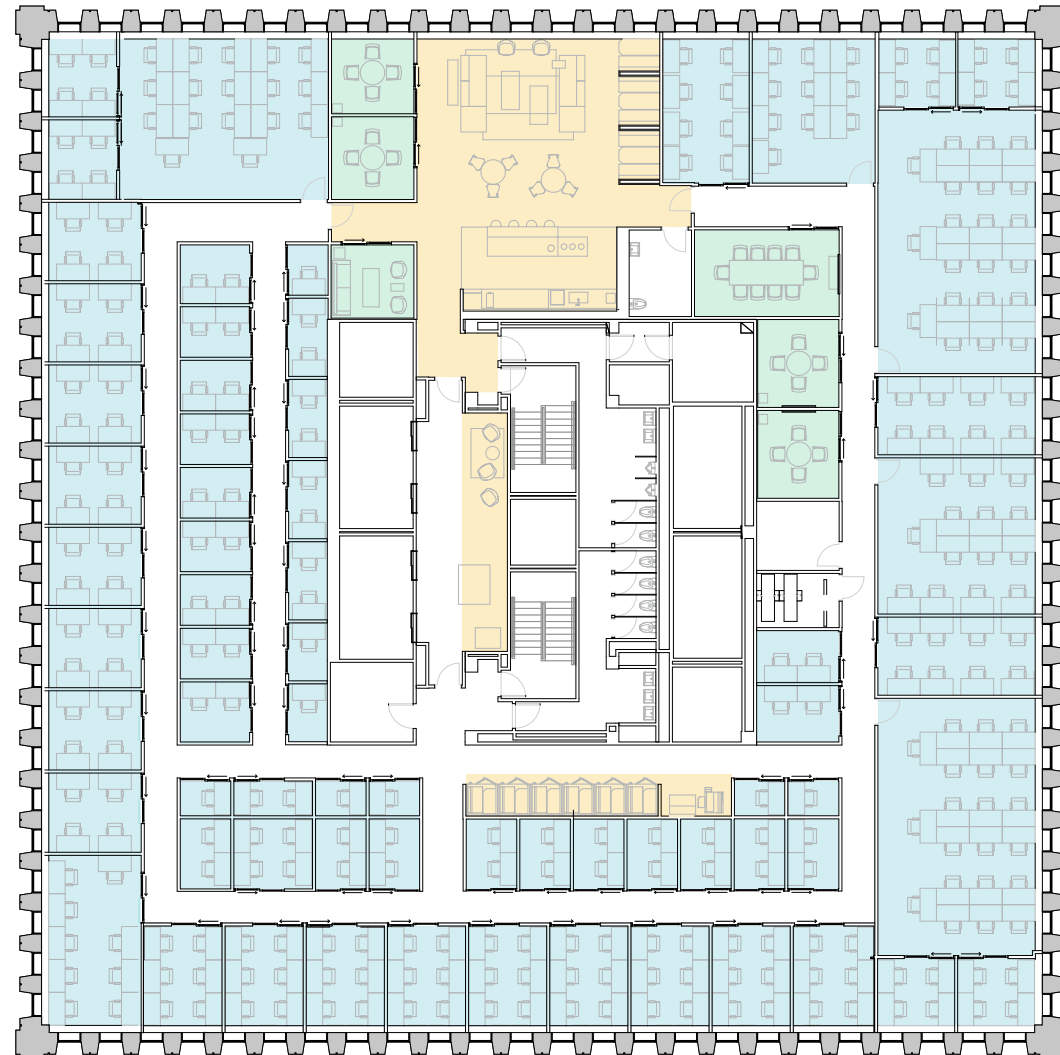
LEGEND

- MEETING ROOM
- SHARED WORKSPACE
- DEDICATED SPACE



14TH STREET NORTHEAST

PEACHTREE STREET



14TH STREET NORTHEAST



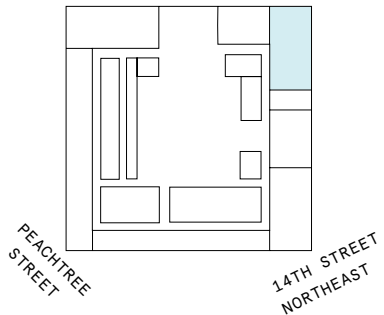
9th Floor

15,287 RSF

1,666 RSF Suite 09-103

2

PRIVATE OFFICE(S)



All dimensions are approximate and subject to variances. It is your obligation to independently verify the particulars of the property. WeWork reserves the right to make changes.

Suite 09-103

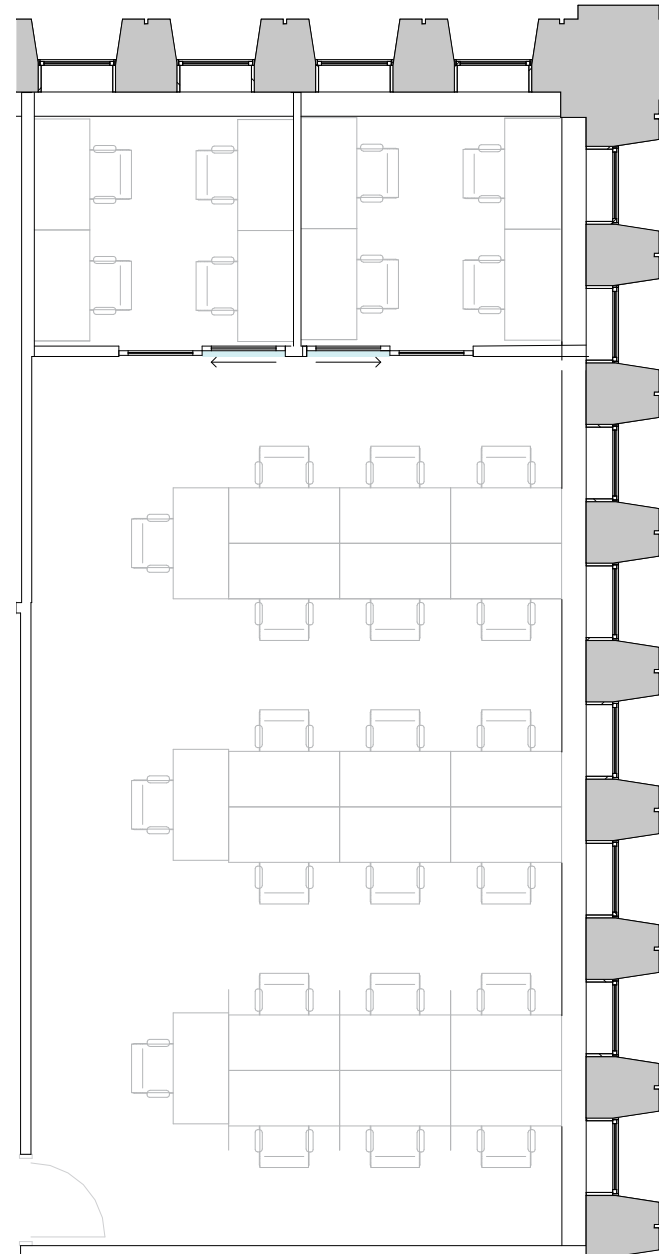
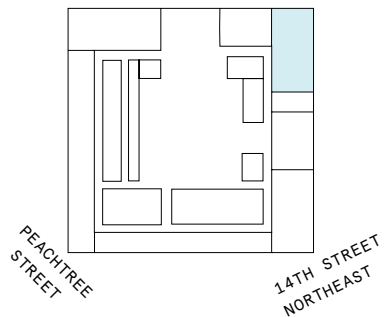
9th Floor

2

PRIVATE OFFICE(S)

1,666 RSF

RENTABLE AREA



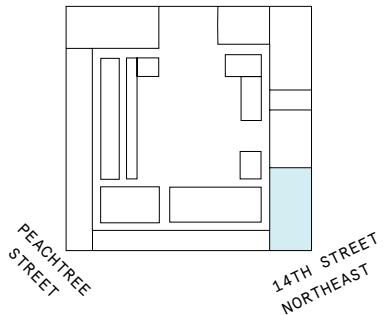
9th Floor

15,287 RSF

1,629 RSF Suite 09-109

2

PRIVATE OFFICE(S)



Suite 09-109

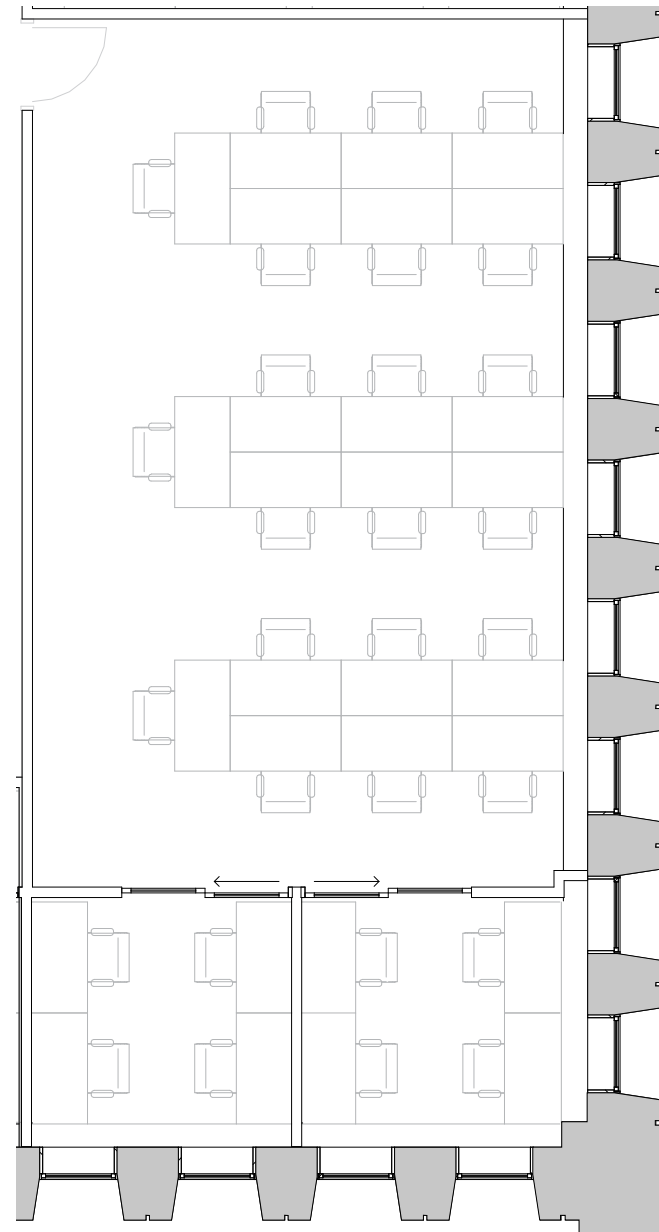
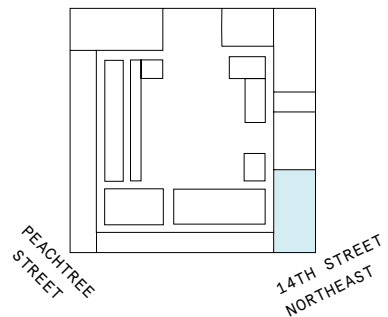
9th Floor

2

PRIVATE OFFICE(S)

1,629 RSF

RENTABLE AREA



10th Floor

14,672 RSF

5

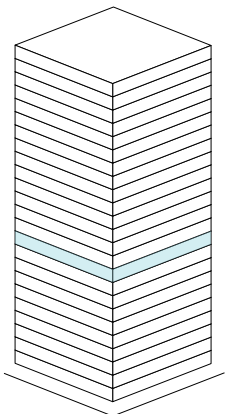
MEETING ROOM(S)

4

SHARED WORKSPACE(S)

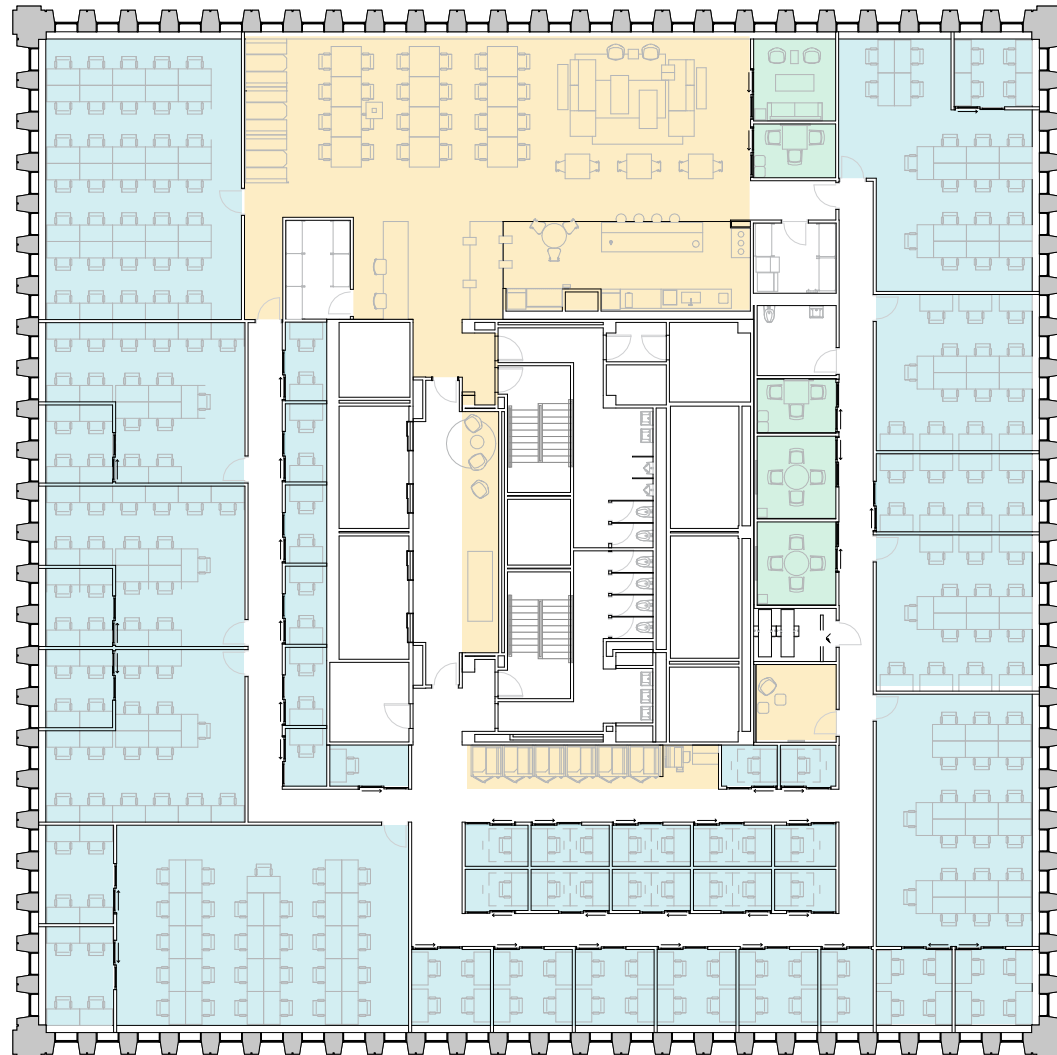
LEGEND

- MEETING ROOM
- SHARED WORKSPACE
- DEDICATED SPACE



14TH STREET NORTHEAST

PEACHTREE STREET



14TH STREET NORTHEAST



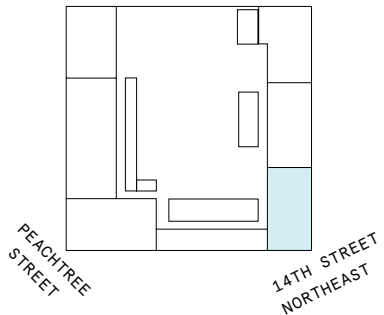
10th Floor

12,908 RSF

1,425 RSF Suite 10-106

2

PRIVATE OFFICE(S)



All dimensions are approximate and subject to variances. It is your obligation to independently verify the particulars of the property. WeWork reserves the right to make changes.

Suite 10-106

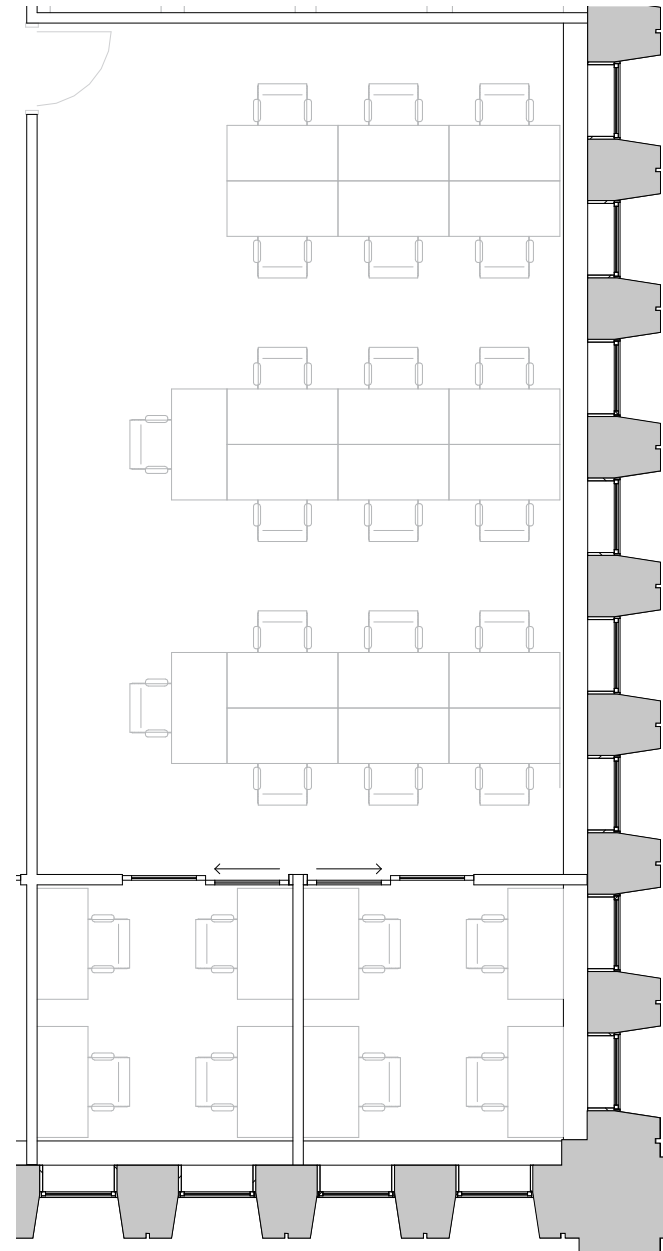
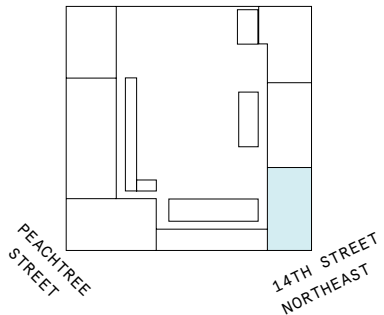
10th Floor

2

PRIVATE OFFICE(S)

1,425 RSF

RENTABLE AREA



10th Floor

12,908 RSF

1,986 RSF Suite 10-118

2

PRIVATE OFFICE(S)



All dimensions are approximate and subject to variances. It is your obligation to independently verify the particulars of the property. WeWork reserves the right to make changes.

Suite 10-118

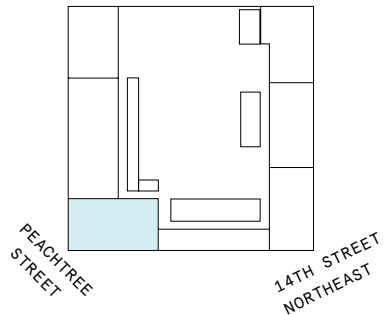
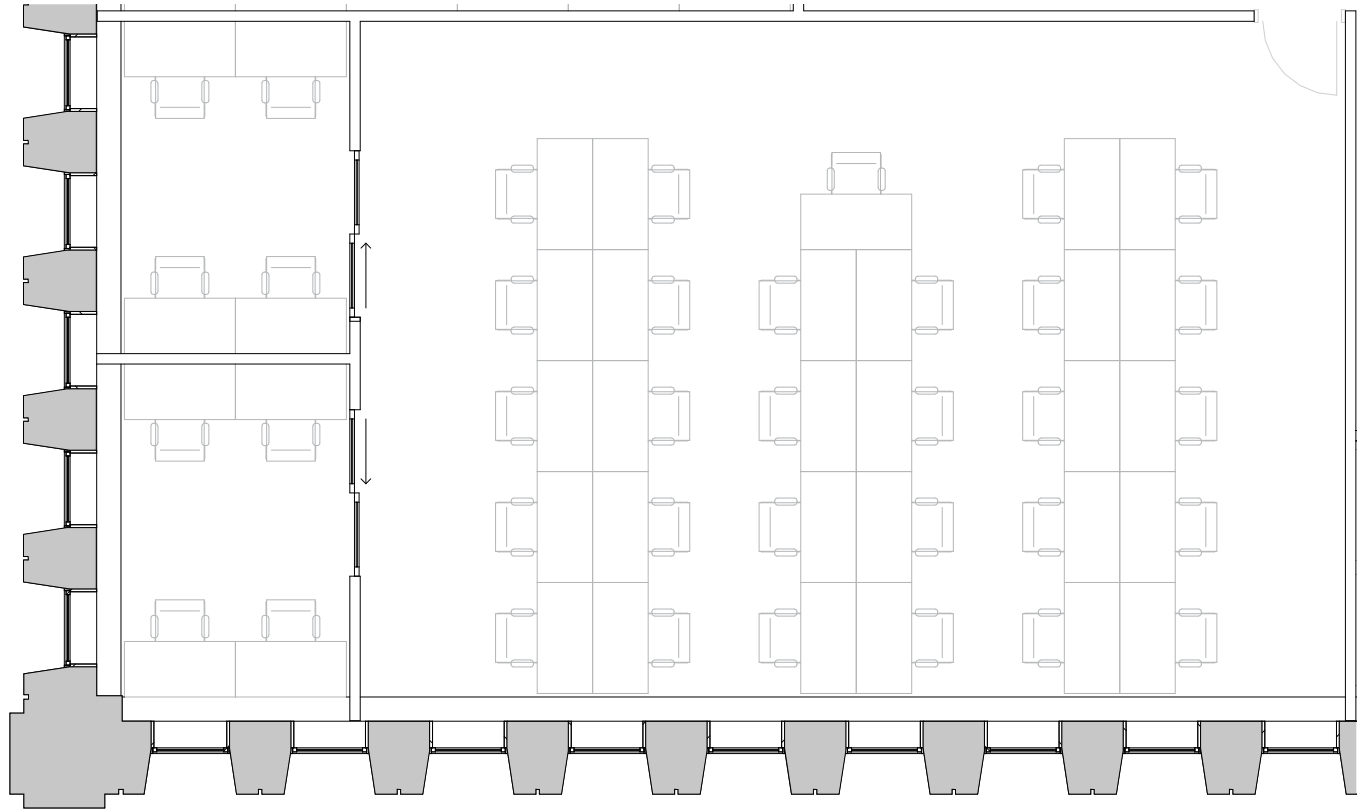
10th Floor

2

PRIVATE OFFICE(S)

1,986 RSF

RENTABLE AREA

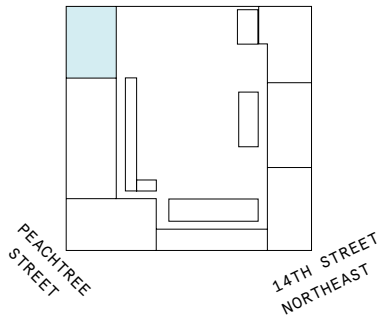


All dimensions are approximate and subject to variances. It is your obligation to independently verify the particulars of the property. WeWork reserves the right to make changes.

10th Floor

12,908 RSF

1,529 RSF Suite 10-129

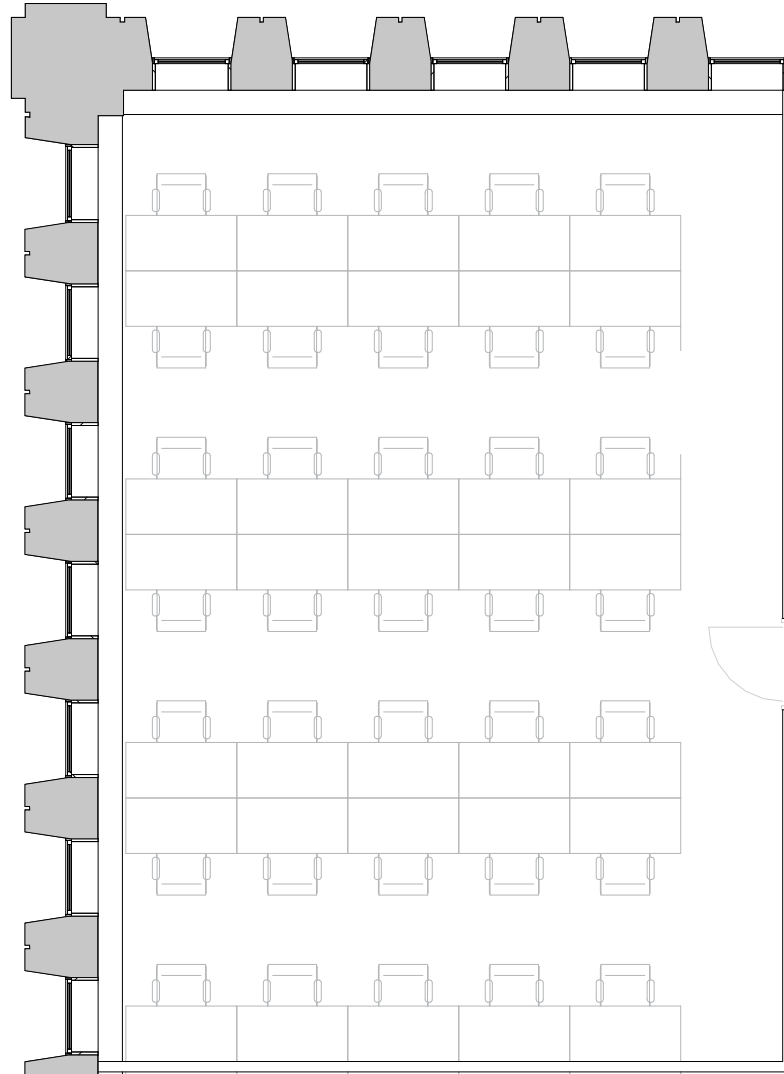
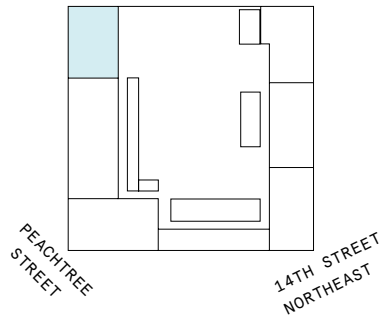


All dimensions are approximate and subject to variances. It is your obligation to independently verify the particulars of the property. WeWork reserves the right to make changes.

Suite 10-129

10th Floor

1,529 RSF
RENTABLE AREA



11th Floor

15,498 RSF

6

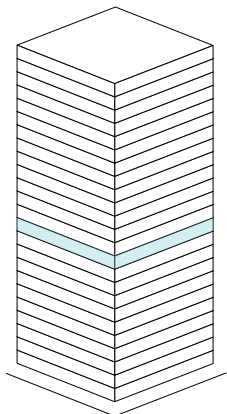
MEETING ROOM(S)

3

SHARED WORKSPACE(S)

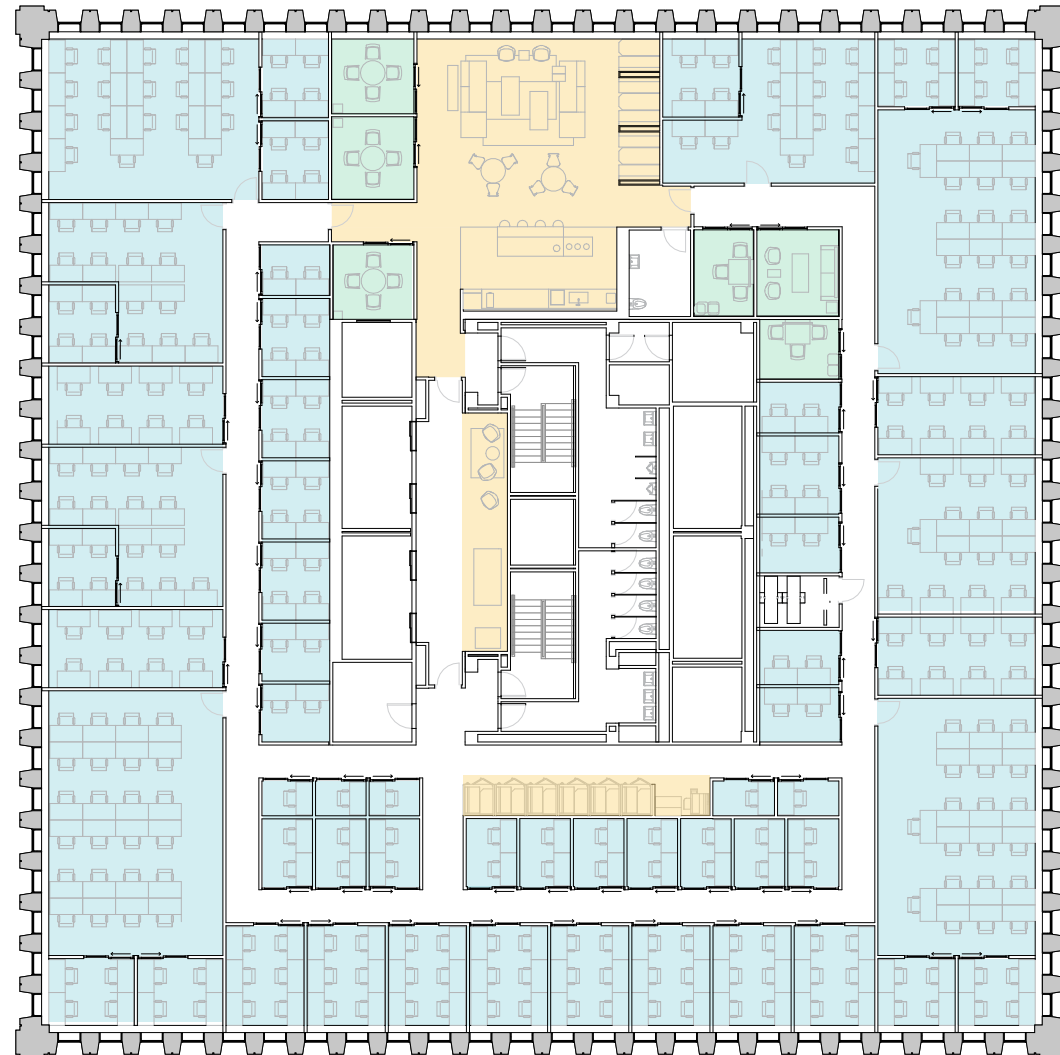
LEGEND

- MEETING ROOM
- SHARED WORKSPACE
- DEDICATED SPACE



14TH STREET NORTHEAST

PEACHTREE STREET



14TH STREET NORTHEAST



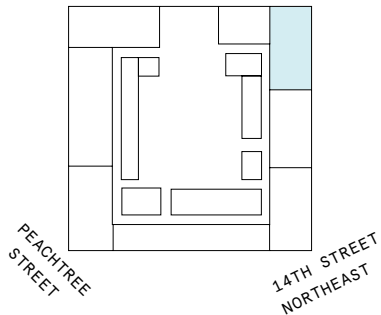
11th Floor

15,498 RSF

1,553 RSF Suite 11-102

2

PRIVATE OFFICE(S)



All dimensions are approximate and subject to variances. It is your obligation to independently verify the particulars of the property. WeWork reserves the right to make changes.

Suite 11-102

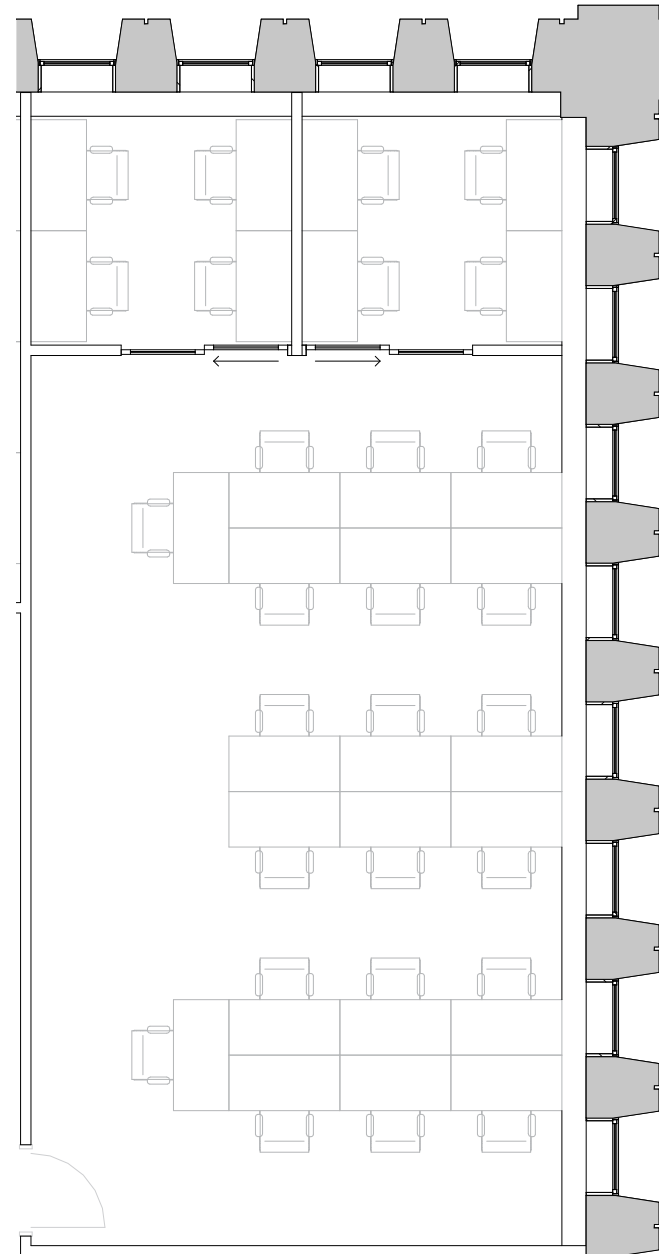
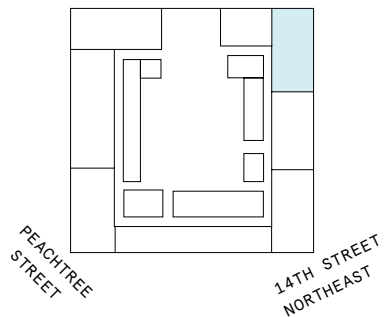
11th Floor

2

PRIVATE OFFICE(S)

1,553 RSF

RENTABLE AREA



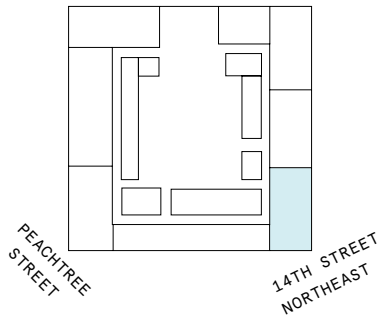
11th Floor

15,498 RSF

1,518 RSF Suite 11-111

2

PRIVATE OFFICE(S)



All dimensions are approximate and subject to variances. It is your obligation to independently verify the particulars of the property. WeWork reserves the right to make changes.

Suite 11-111

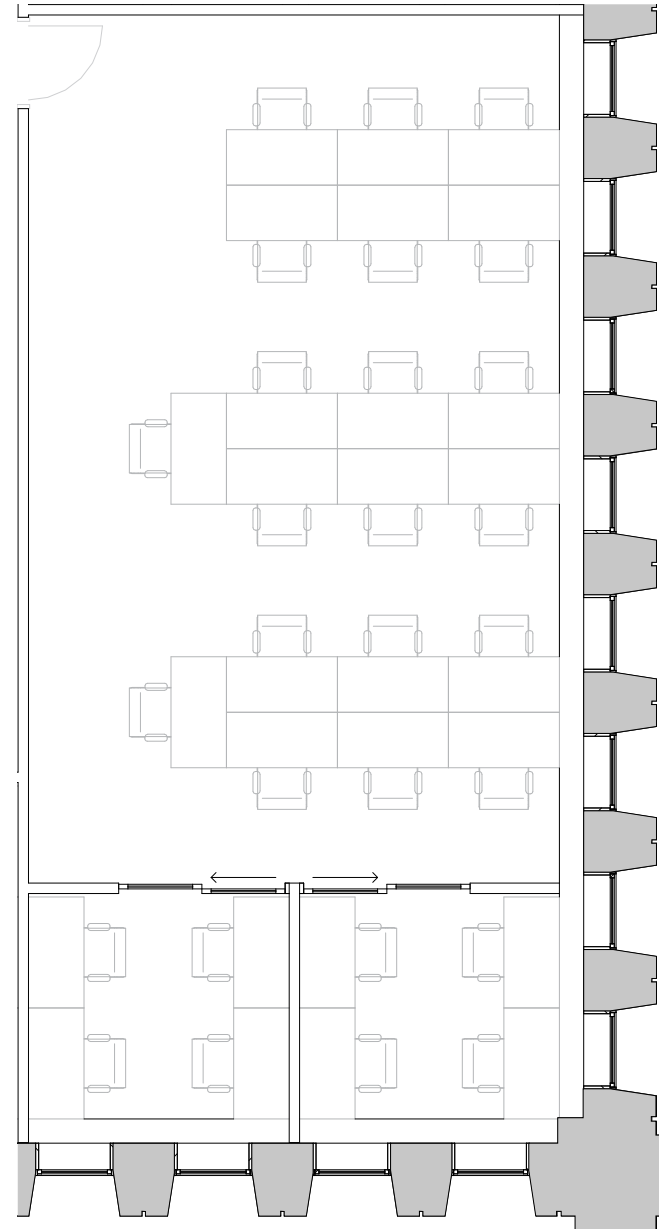
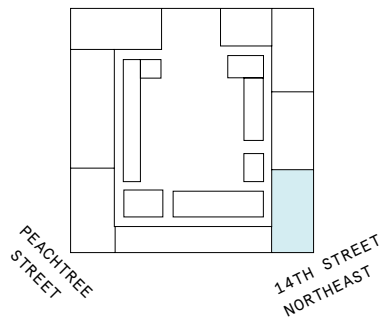
11th Floor

2

PRIVATE OFFICE(S)

1,518 RSF

RENTABLE AREA



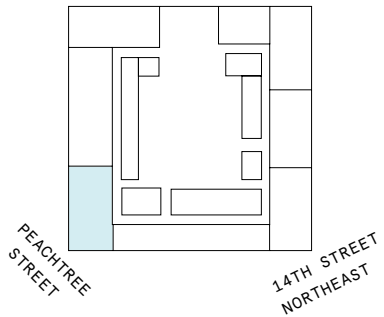
11th Floor

15,498 RSF

1,712 RSF Suite 11-130

2

PRIVATE OFFICE(S)



All dimensions are approximate and subject to variances. It is your obligation to independently verify the particulars of the property. WeWork reserves the right to make changes.

Suite 11-130

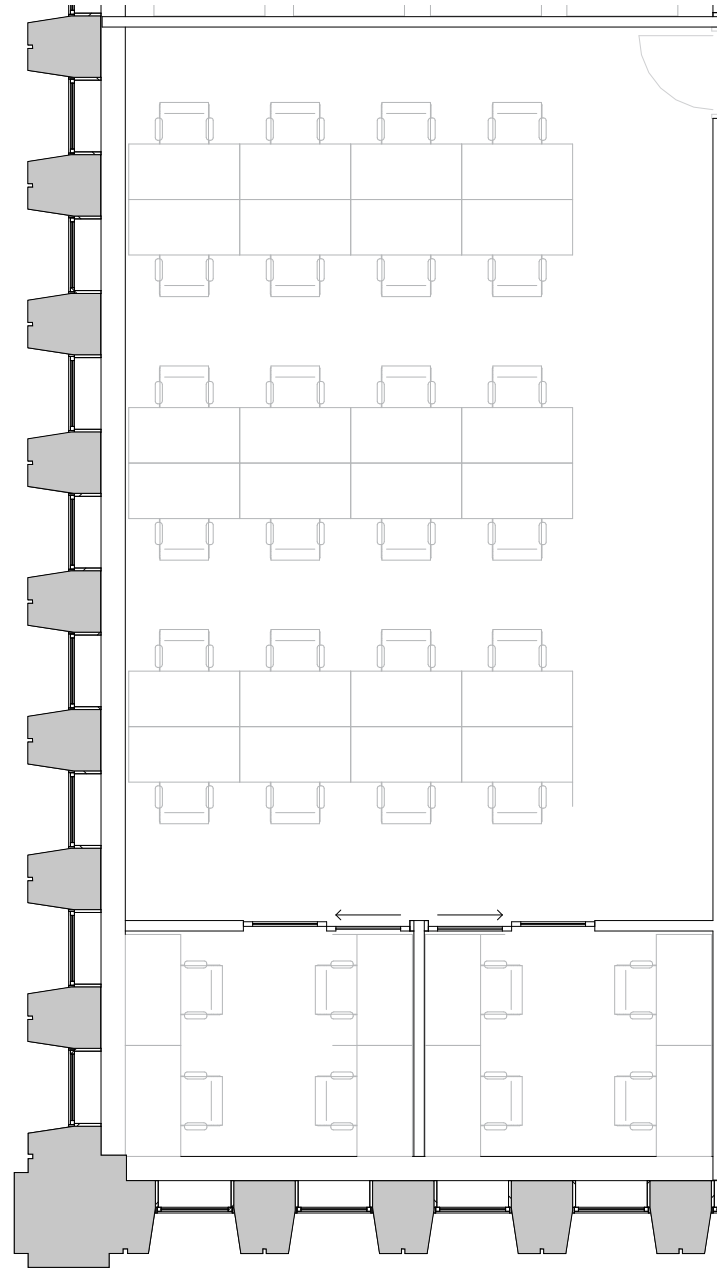
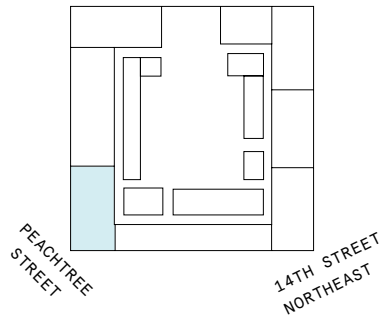
11th Floor

2

PRIVATE OFFICE(S)

1,712 RSF

RENTABLE AREA



Contact

Complete the form [linked here](#) to book a tour or connect with one of our team members.



© 2023 WeWork. The WeWork trademark and related logos are the property of WeWork Companies LLC. Any reference to third-party names are for reference and informational purposes only and should not be considered an endorsement or association of WeWork or vice versa. Photographs contained herein may be representative examples of various WeWork locations and do not necessarily depict the WeWork location referenced. While reasonable efforts have been made to check the accuracy of the information contained here, WeWork, its officers, employees, directors, and representatives, make no warranty, express or implied, regarding the accuracy of the information and disclaim any liability arising from the use of the information contained herein. All dimensions are approximate and subject to variances. It is your obligation to independently verify the particulars of the property. WeWork reserves the right to make changes.