



Coda

756 West Peachtree
Street Northwest

Space
availability
summary

WeWork @ 756 West Peachtree
Street Northwest
Atlanta, GA

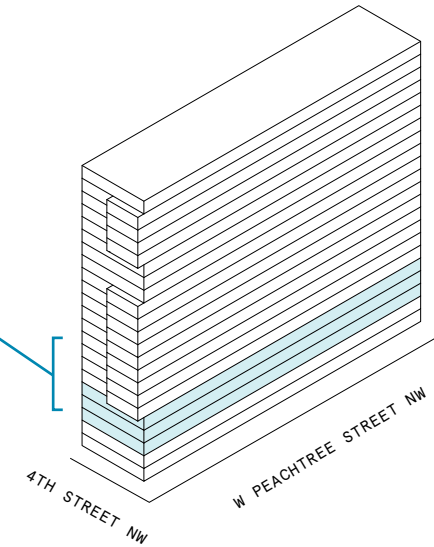
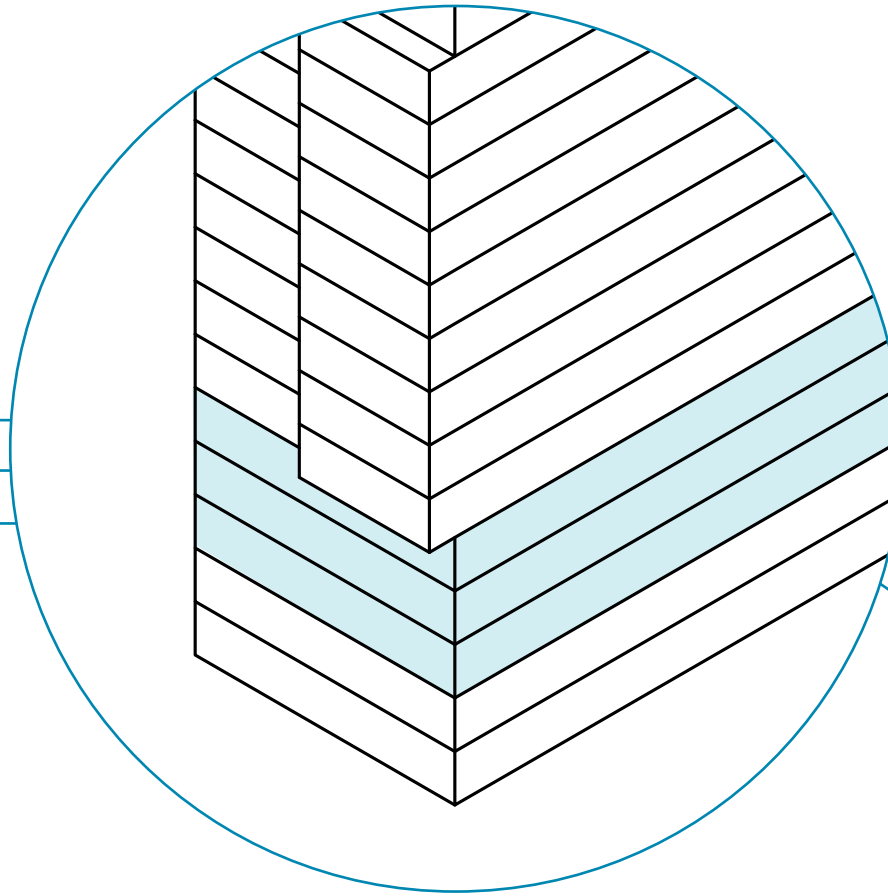
wework

[VIEW VIRTUAL TOUR](#)

5th Floor 23,563 RSF
4th Floor 21,938 RSF
3rd Floor 27,797 RSF

73,298

TOTAL WEWORK RSF



Coda
At a glance

Workspaces designed for productivity and creativity with flexible size & term

Dedicated, private offices available from 62 to 5,637 RSF

Move-in ready offices furnished & wired

21

TOTAL BUILDING FLOORS

670,000

TOTAL BUILDING SQ FT

All dimensions are approximate and subject to variances. It is your obligation to independently verify the particulars of the property. WeWork reserves the right to make changes.



Designed for forward-thinking minds, Coda offers numerous seating arrangements, including classroom-like settings, to support member productivity.



Invigorated by the bright pop of color, this sleek and minimal meeting room is great for teams of smaller sizes.

Visionary, collaborative, and tech-savvy

Immersed in the innovative crowd of Atlanta's reputable Georgia Institute of Technology, Coda is a glassy, mixed-use, modern office space in midtown's thriving Tech Square. Built in 2019, local architect John Portman conceived the first 'Class T' office venture— a tech hub that is also home to one of the largest data centers in the Southeast, facilitating communication between different mindsets, including executives, startups, scientists, students, and researchers. The innovative property features two wings united by a 16-floor cylindrical-shaped core as the center of interaction, consisting of six distinct three-story atriums. The top atrium is a distinctive design feature pinned by the world's tallest spiral staircase. WeWork spans across the property's third, fourth, and fifth floors at 72,704 square feet, with access to all of its amenities, including a public-open Collective Food Hall curated by Atlanta's top chefs, retail areas, showrooms, and an expansive outdoor plaza.

Created for forward-thinking demographics

The hyped-up location features inviting yet futuristic interiors conceived with refined consideration of tech-savvy, developing professionals.

- Inspired by the bright, forward-thinking community, the interiors merge materials such as stainless steel and warm color stones with translucent elements like perforated metal, wires, and acrylic—creating a modern, yet lively balance
- Linear wood paneling and custom millwork combined with sleek, concrete floors form a sophisticated contrast, invigorated by bright trims and pops of color
- The colorful custom furniture and accessories are accentuated with unique, vintage pieces, creating a playful, laid-back vibe
- Indirect linear lighting provides a soothing atmosphere, contrasted by accents of custom neon artwork and murals



The location transforms its open, industrial structure with pops of colorful lights, and bright furniture and accent pieces, creating minimal yet radiant interiors.



Coda's outdoor area provides an energizing spot for socializing or working solo.



The expansive, avant-garde common area features a food court cafeteria and various open table indoor and outdoor seating options.

On-site amenities

- High-speed Wi-Fi
- Meeting rooms
- On-site staff
- Unique common areas
- Phone booths
- Stocked kitchens
- Business-class printers
- Professional and social events
- Parking
- Dog friendly
- Outdoor space
- Bike storage
- New parent's room
- Event space
- Showers
- Food hall
- Electric vehicle charging stations
- Building coffee bar (LiveWire Coffee)

Building specifications



Building history

Built in 2019 by
Portman Holdings



Security

24/7 security



HVAC

Monday – Friday: 8am–6pm

Saturday: 8am–1pm

Overhead FCUs



Building size

21 stories

670,000 SF



Elevators

ThyssenKrupp TWIN
elevator system



Fire strategy

Fully-sprinklered building



Ceiling heights

13 foot 3 inches



Certifications

LEED Platinum









Electrical capacity

8.6W/scf

The "Silicon Valley" of the South

Positioned within the blossoming, tech-inspired Atlanta scene, WeWork's Tech Square state-of-the-art location is surrounded by the headquarters of global powerhouses like Anthem, Coca-Cola, Google, NCR, and Microsoft, as well as countless startups and mid-size firms. Situated at the corner of 4th Street and West Peachtree Street, the location is across from Georgia Tech's Hotel and Conference Center and is easily accessible by MARTA, car, and bike. Buzzing with brilliant people across all industries, the district provides tons of diverse offerings and amenities—with some of the city's best shopping avenues, bars, galleries, parks, fitness studios, performance venues, and eateries all within walking distance. Consider Ecco for cocktail sipping, The Museum of Design Atlanta for some creative stimulation, Fox Theatre for a good show, or Livingston for delicious dining to refresh yourself after a tiring workday.

Distance to WeWork

Tech Square		Walking	3 min
North Avenue MARTA Station		Walking	4 min
Midtown MARTA station		Walking	11 min
75 Highway Access		Driving	4 min
85 Highway Access		Driving	4 min
Georgia Tech		Driving	5 min



3rd Floor

27,797 RSF



6

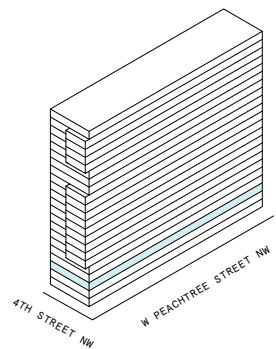
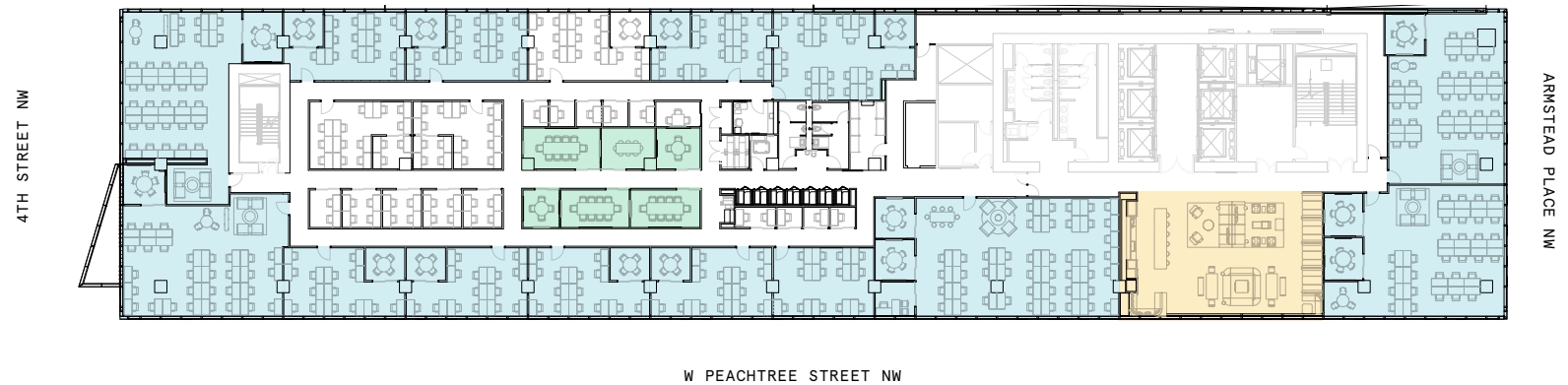
MEETING ROOM(S)

1

SHARED WORKSPACE(S)

LEGEND

- MEETING ROOM
- SHARED WORKSPACE
- DEDICATED SPACE



Suite 03-W101

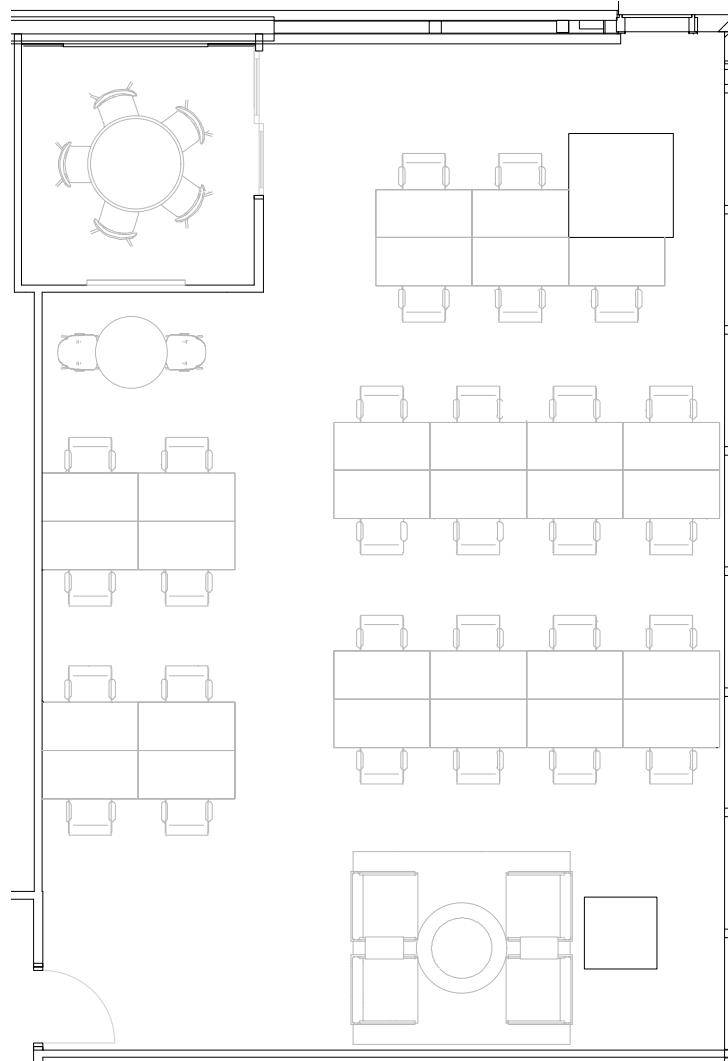
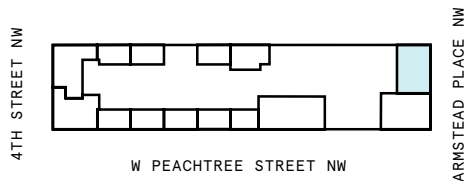
3rd Floor

1

PRIVATE OFFICE(S)

2,444 RSF

RENTABLE AREA



Suite 03-W102

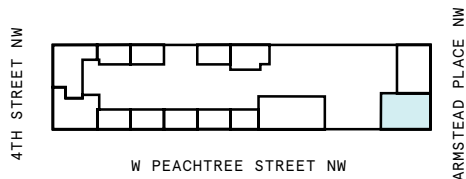
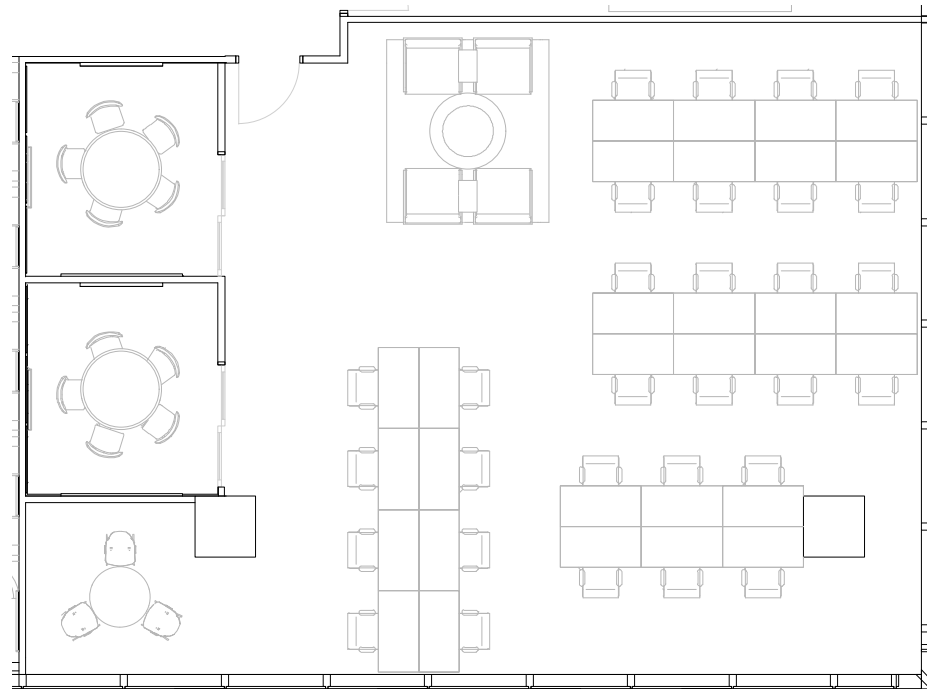
3rd Floor

1

PRIVATE OFFICE(S)

2,893 RSF

RENTABLE AREA

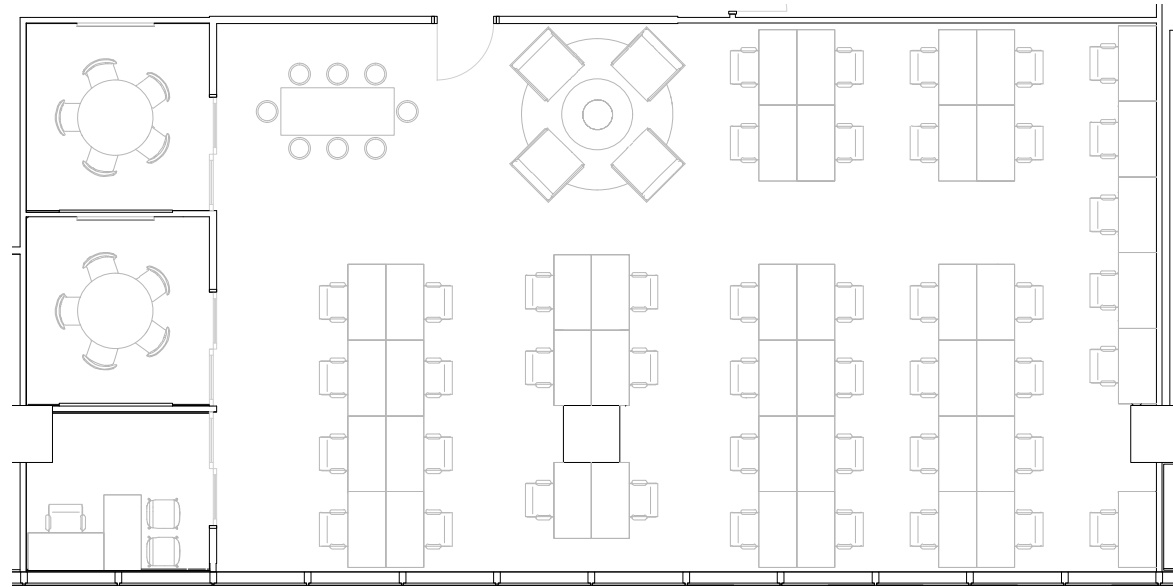


Suite 03-W103

3rd Floor

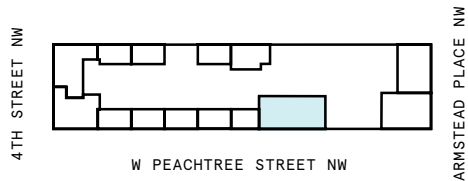
1

PRIVATE OFFICE(S)



3,576 RSF

RENTABLE AREA



Suite 107

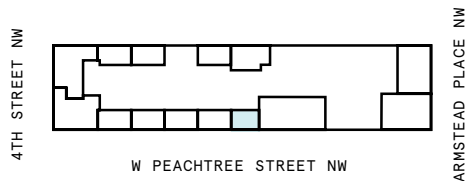
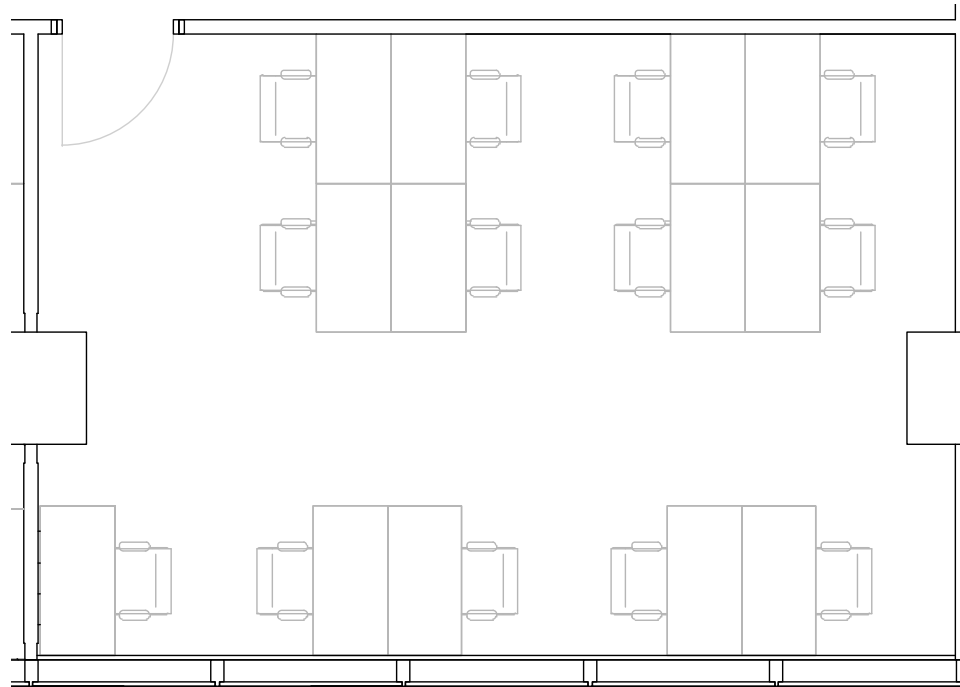
3rd Floor

1

PRIVATE OFFICE(S)

869 RSF

RENTABLE AREA



Suite 109

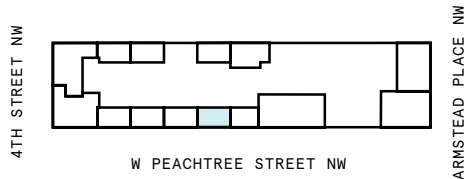
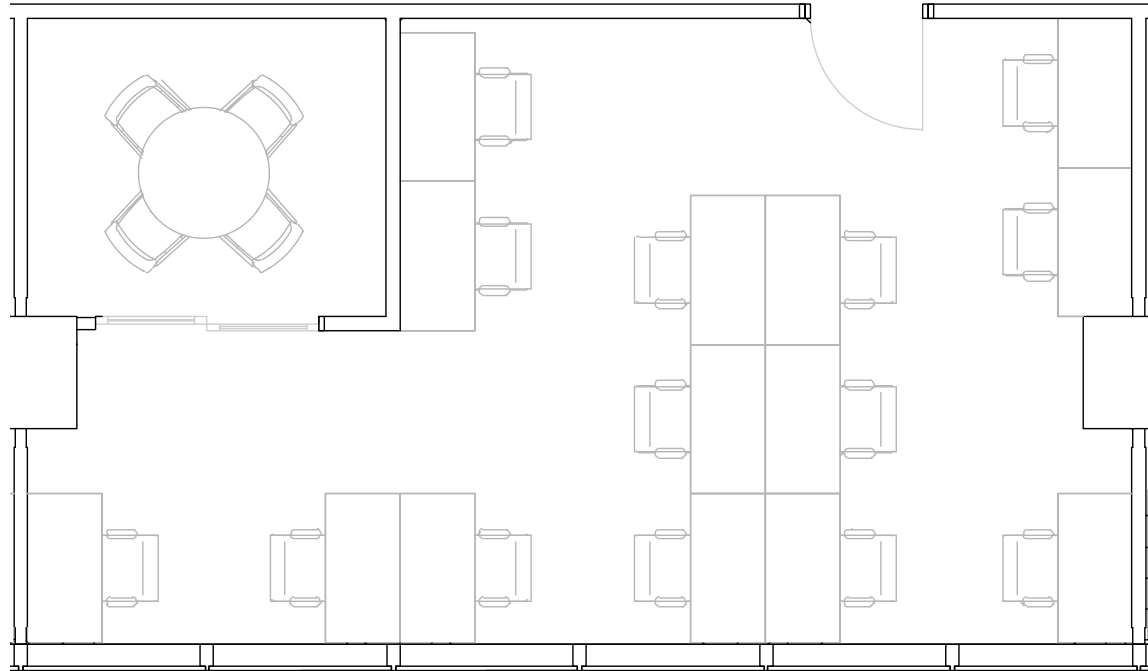
3rd Floor

1

PRIVATE OFFICE(S)

1,037 RSF

RENTABLE AREA



Suite 110

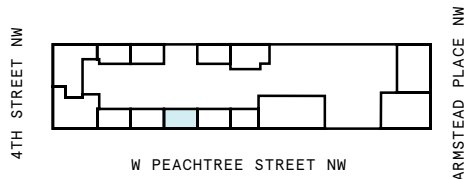
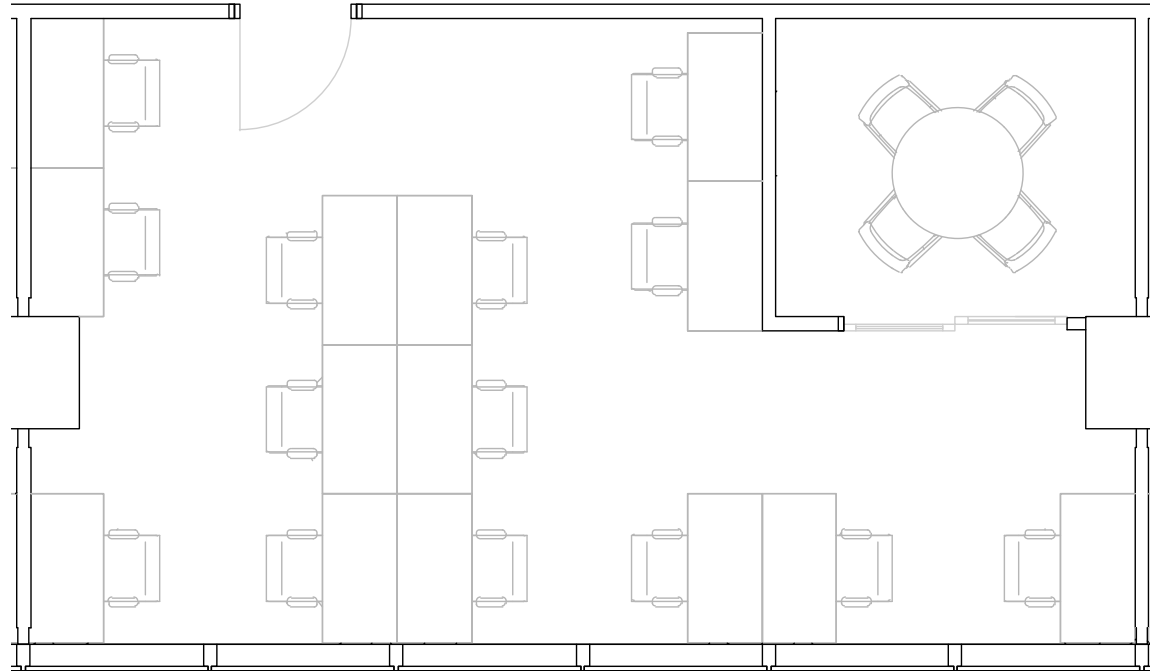
3rd Floor

1

PRIVATE OFFICE(S)

1,037 RSF

RENTABLE AREA



Suite 111

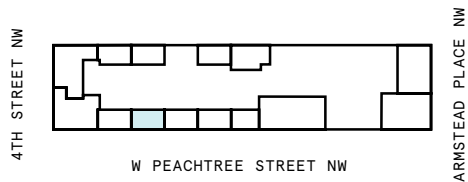
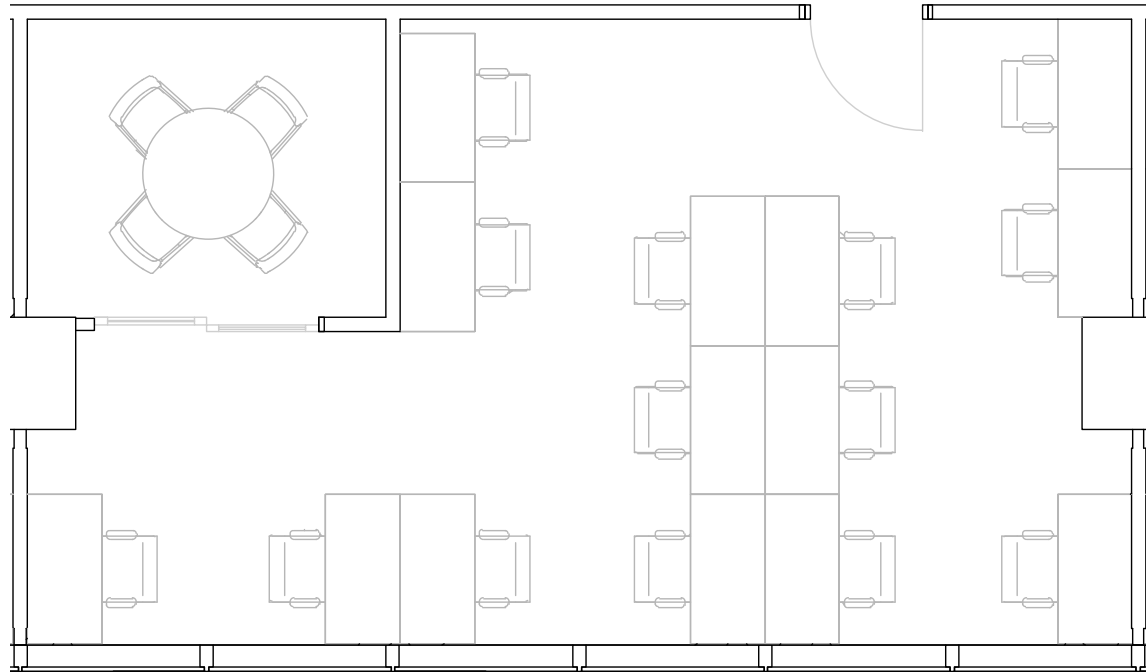
3rd Floor

1

PRIVATE OFFICE(S)

1,037 RSF

RENTABLE AREA



Suite 112

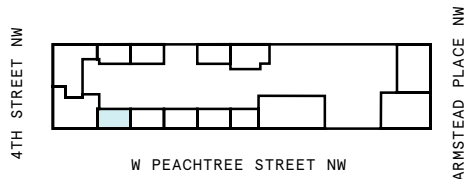
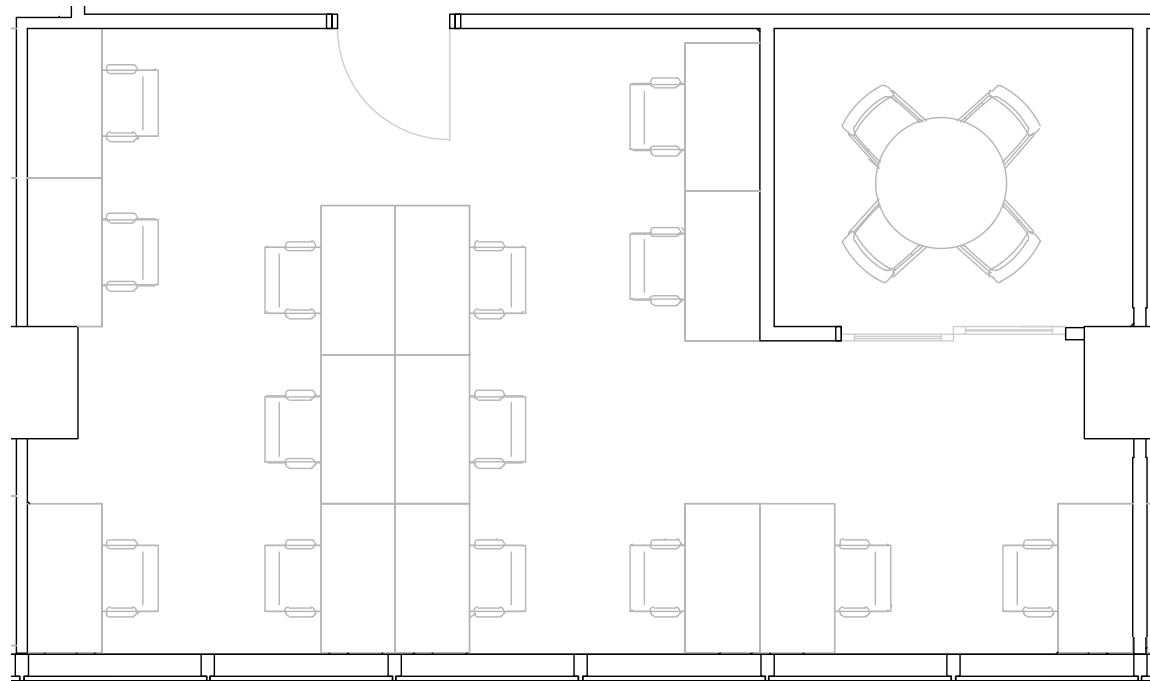
3rd Floor

1

PRIVATE OFFICE(S)

1,037 RSF

RENTABLE AREA



Suite 03-W113

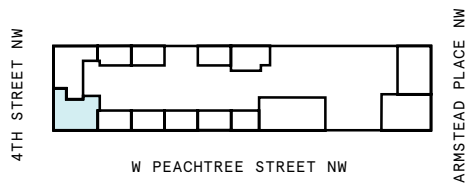
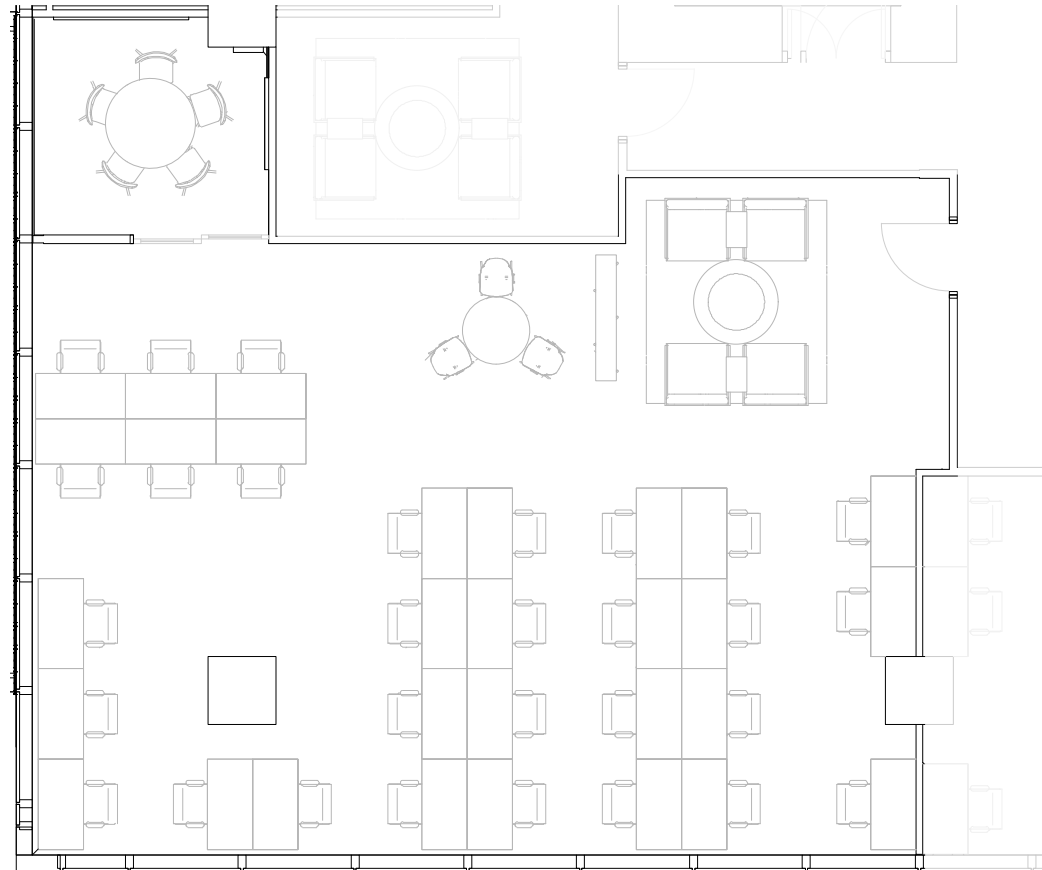
3rd Floor

1

PRIVATE OFFICE(S)

2,578 RSF

RENTABLE AREA



Suite 03-W114

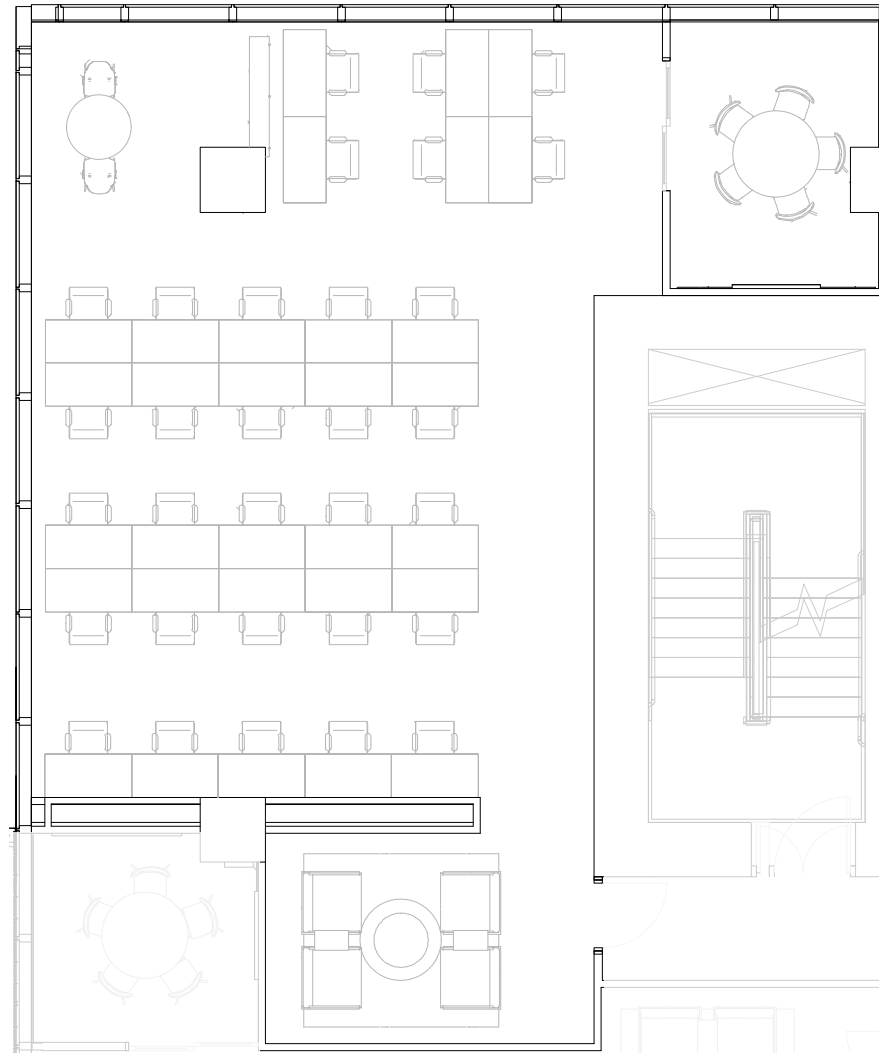
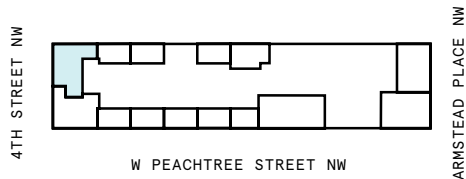
3rd Floor

1

PRIVATE OFFICE(S)

2,648 RSF

RENTABLE AREA



Suite 122

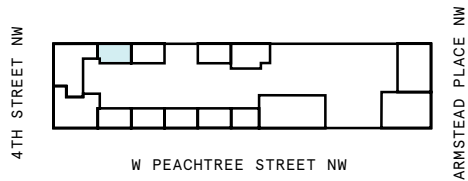
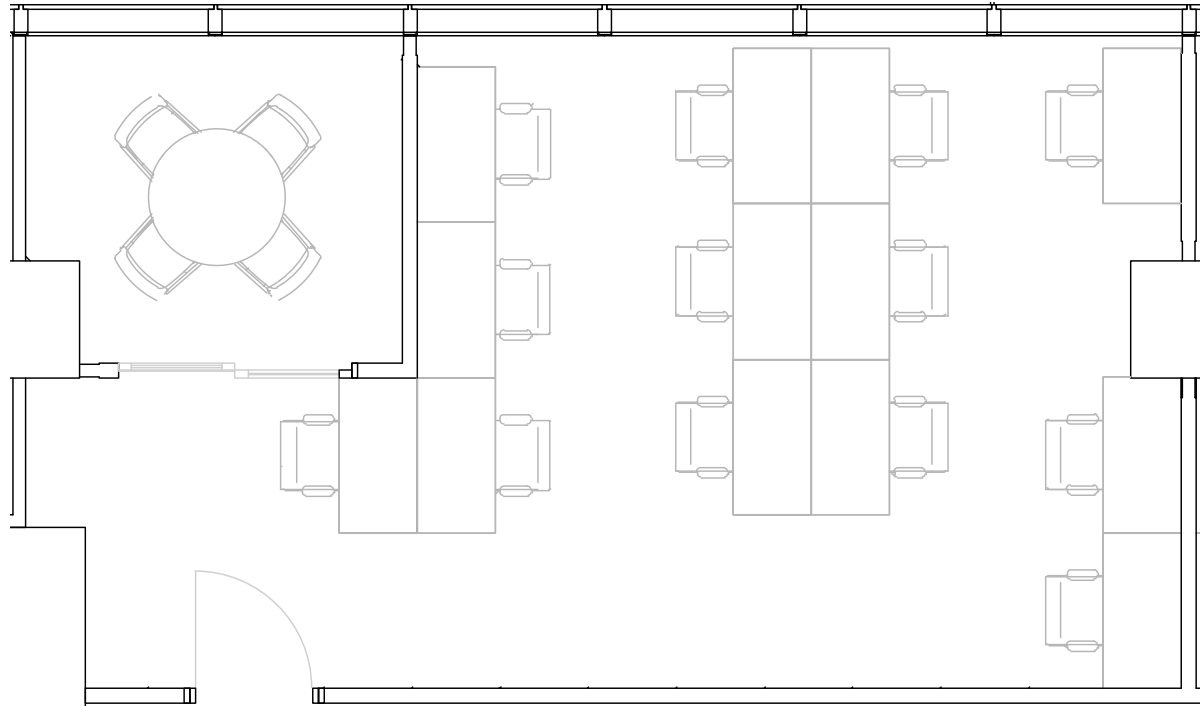
3rd Floor

1

PRIVATE OFFICE(S)

819 RSF

RENTABLE AREA



Suite 124

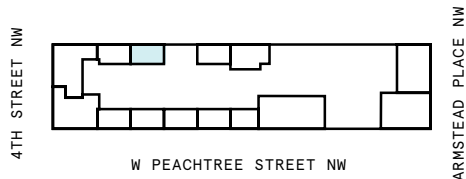
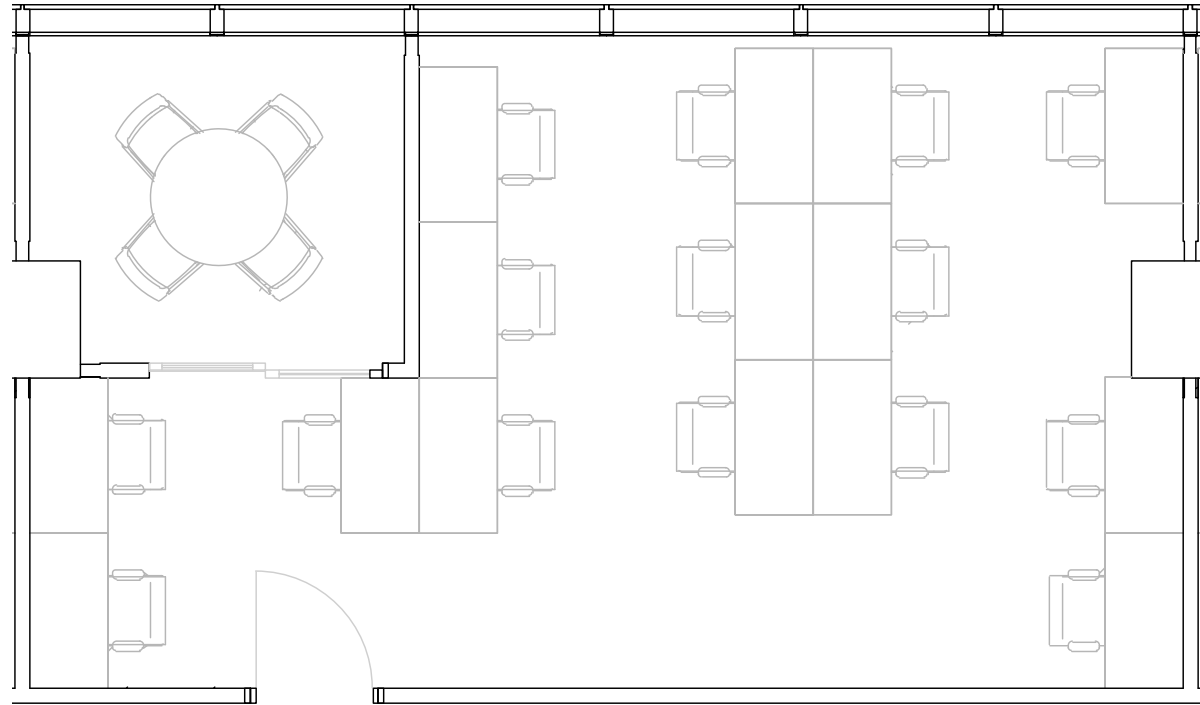
3rd Floor

1

PRIVATE OFFICE(S)

726 RSF

RENTABLE AREA



Suite 132

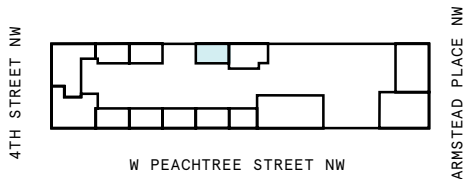
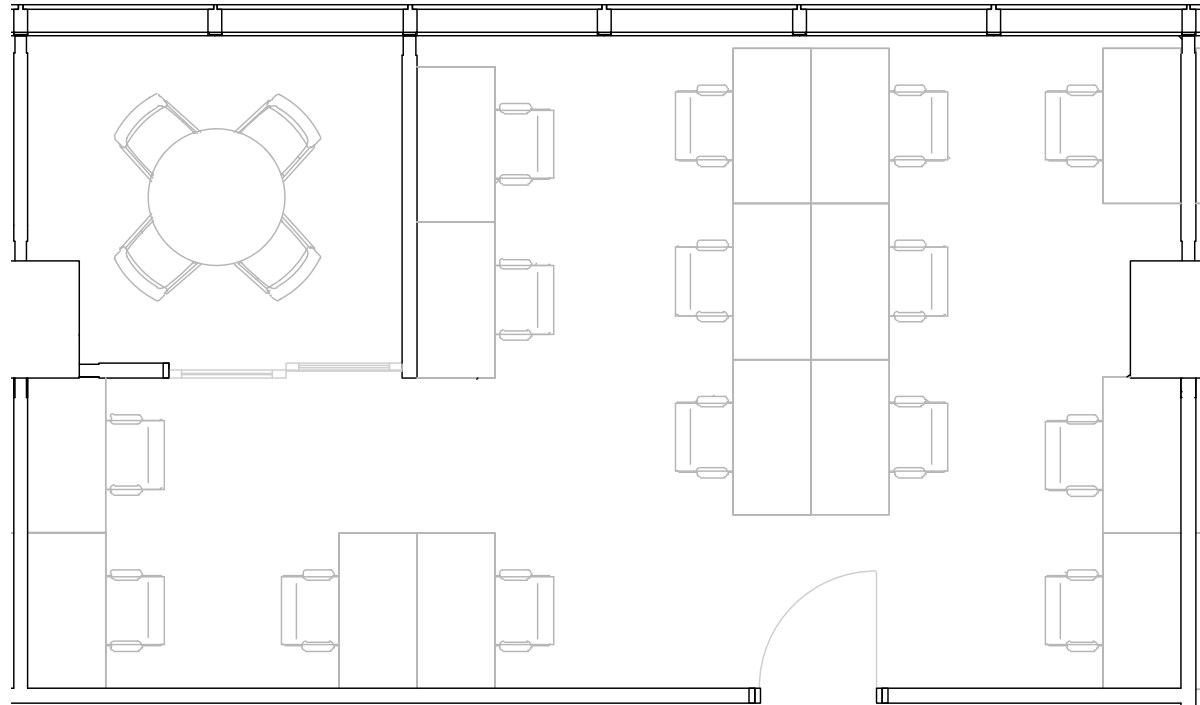
3rd Floor

1

PRIVATE OFFICE(S)

1,040 RSF

RENTABLE AREA



Suite 133

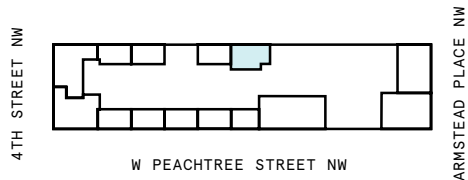
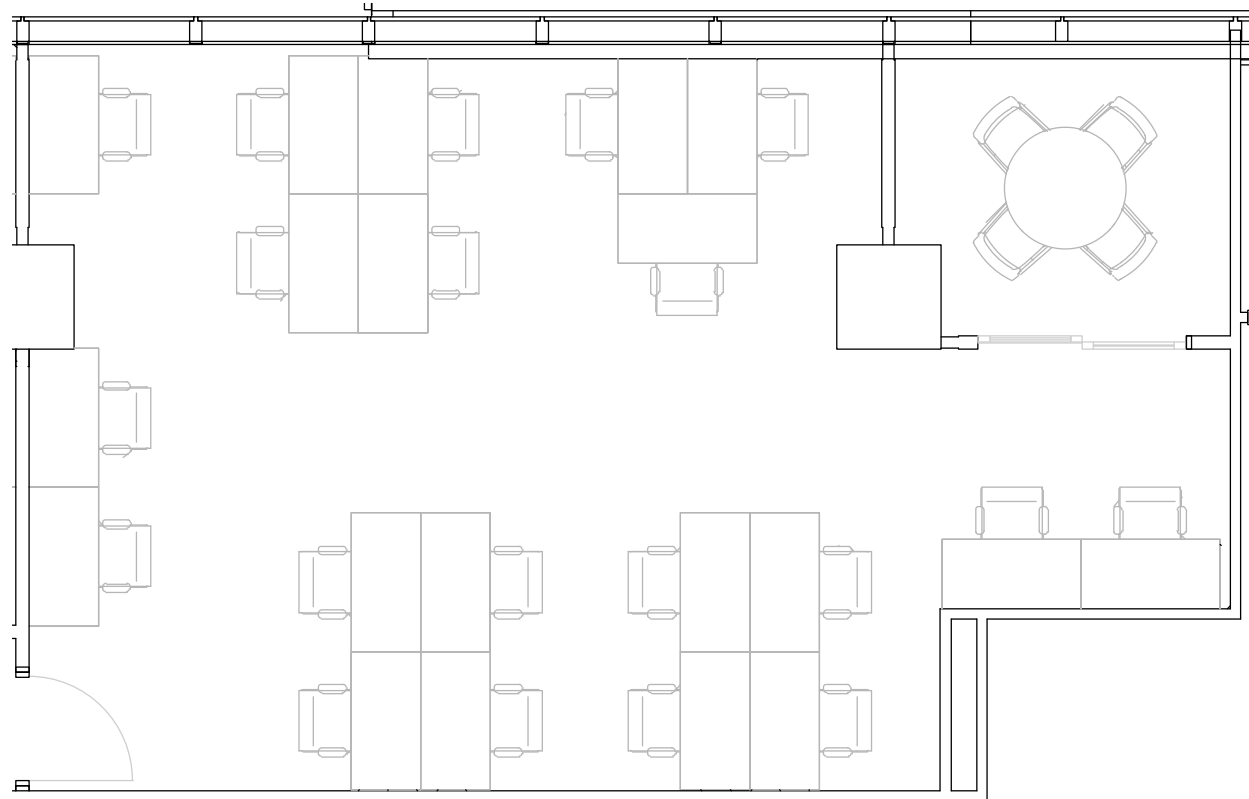
3rd Floor

1

PRIVATE OFFICE(S)

1,404 RSF

RENTABLE AREA



4th Floor

21,938 RSF

8

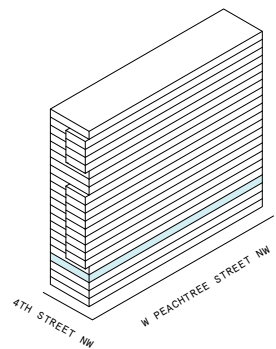
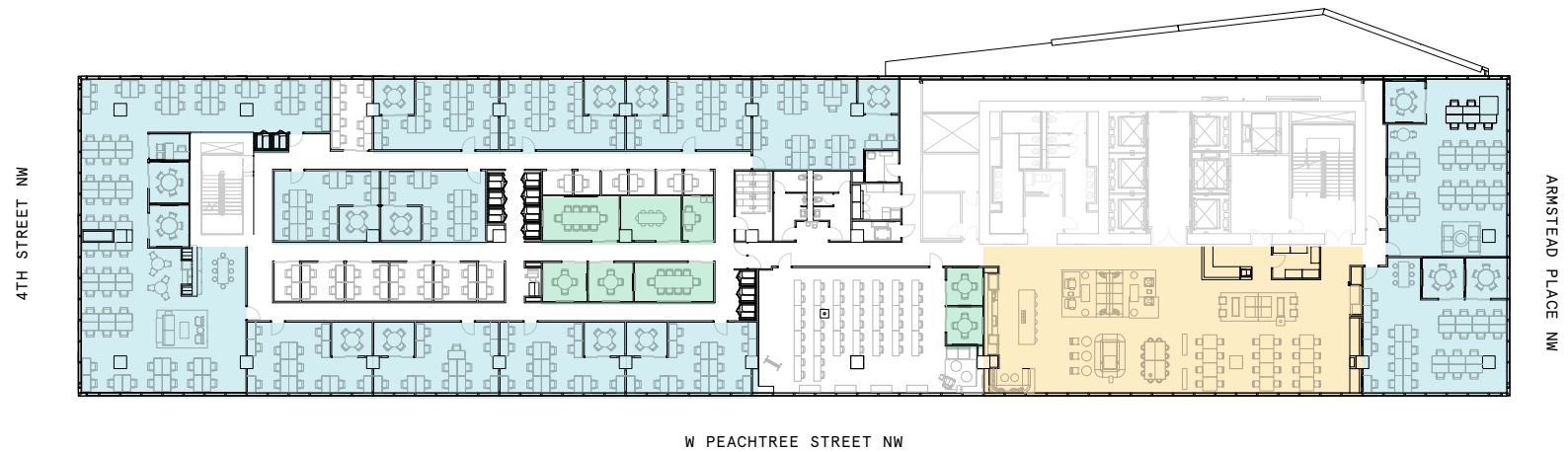
MEETING ROOM(S)

1

SHARED WORKSPACE(S)

LEGEND

- MEETING ROOM
- SHARED WORKSPACE
- DEDICATED SPACE



Suite 103

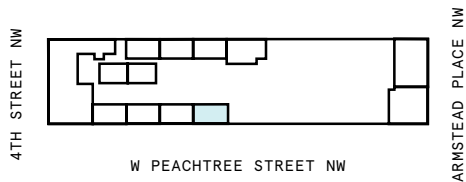
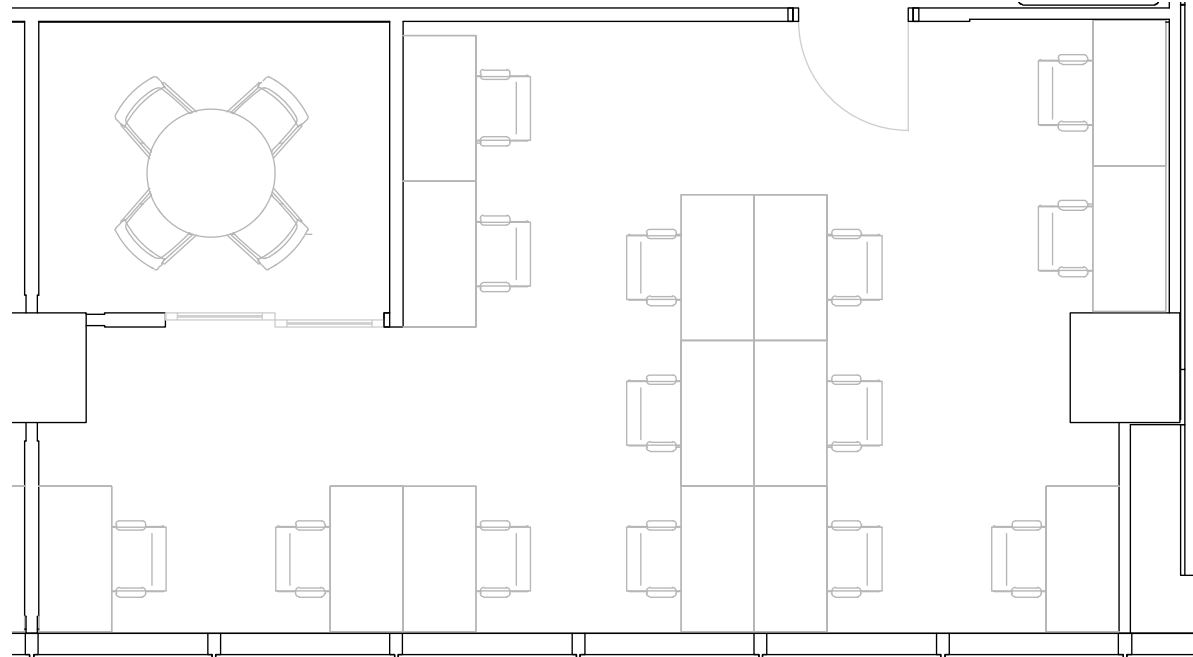
4th Floor

1

PRIVATE OFFICE(S)

1,019 RSF

RENTABLE AREA



Suite 104

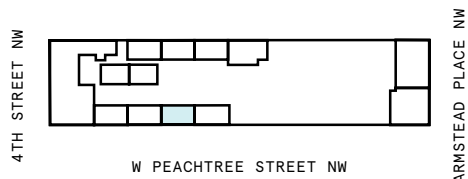
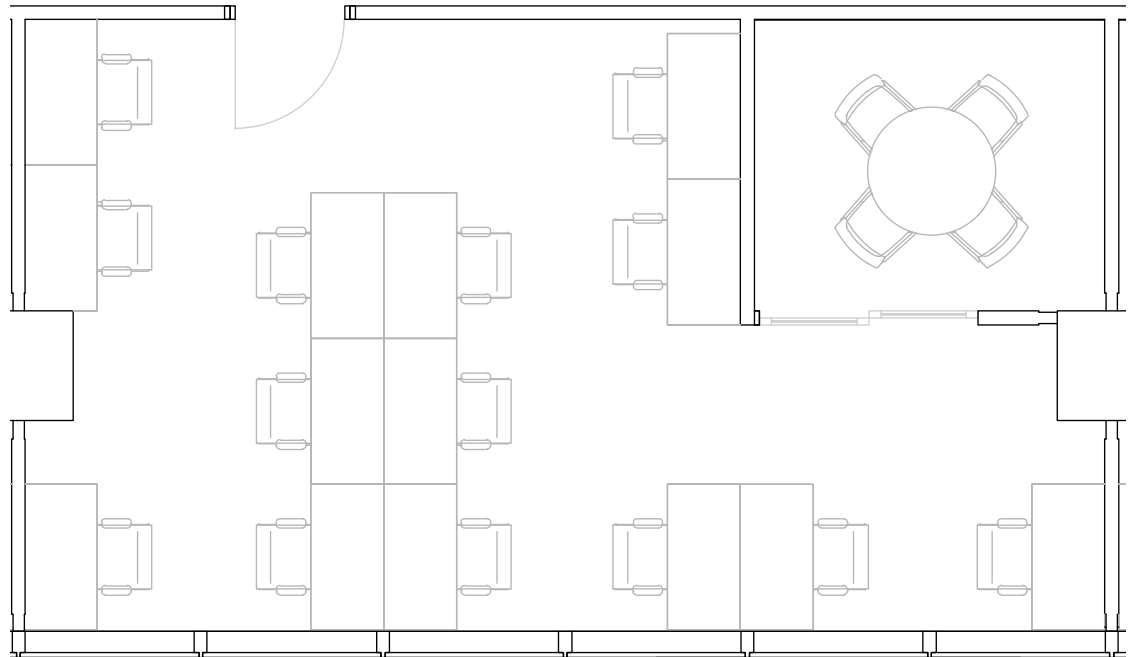
4th Floor

1

PRIVATE OFFICE(S)

996 RSF

RENTABLE AREA



Suite 105

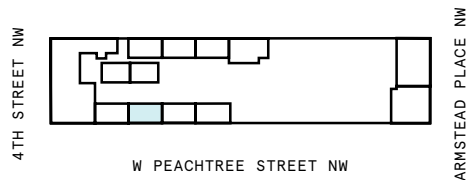
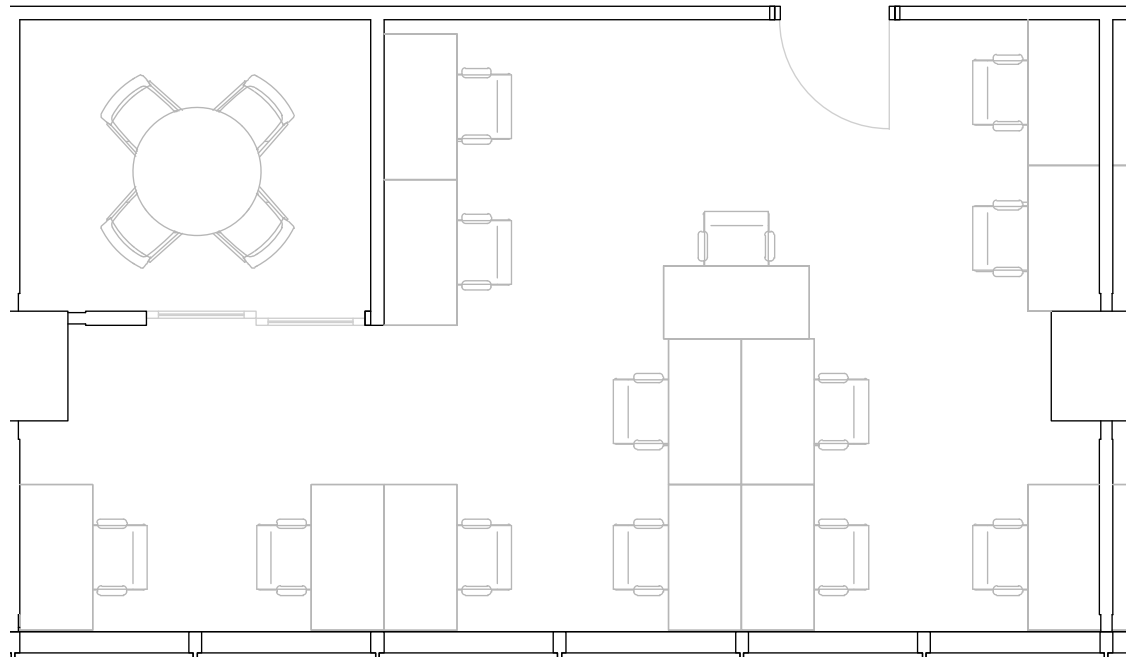
4th Floor

1

PRIVATE OFFICE(S)

996 RSF

RENTABLE AREA



Suite 106

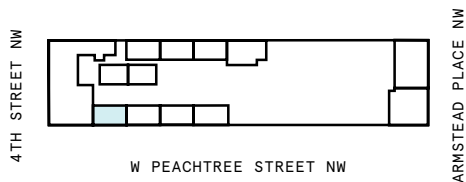
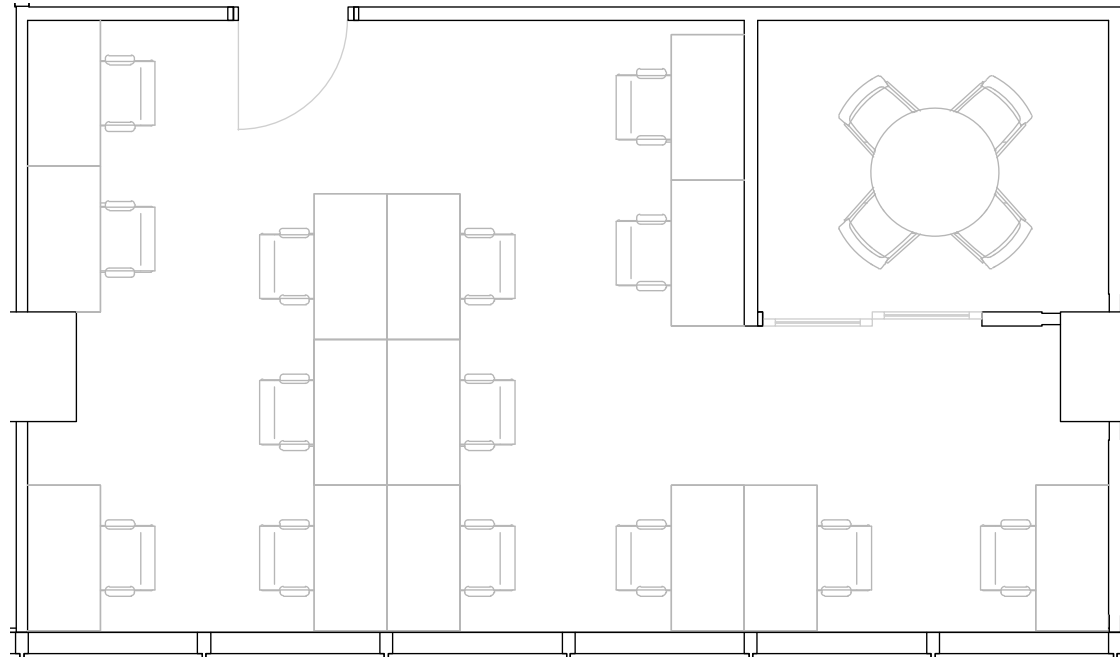
4th Floor

1

PRIVATE OFFICE(S)

997 RSF

RENTABLE AREA



Suite 05-W101

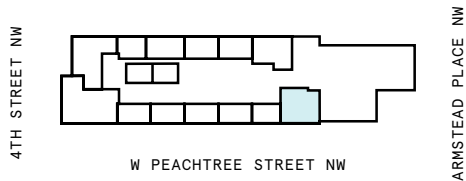
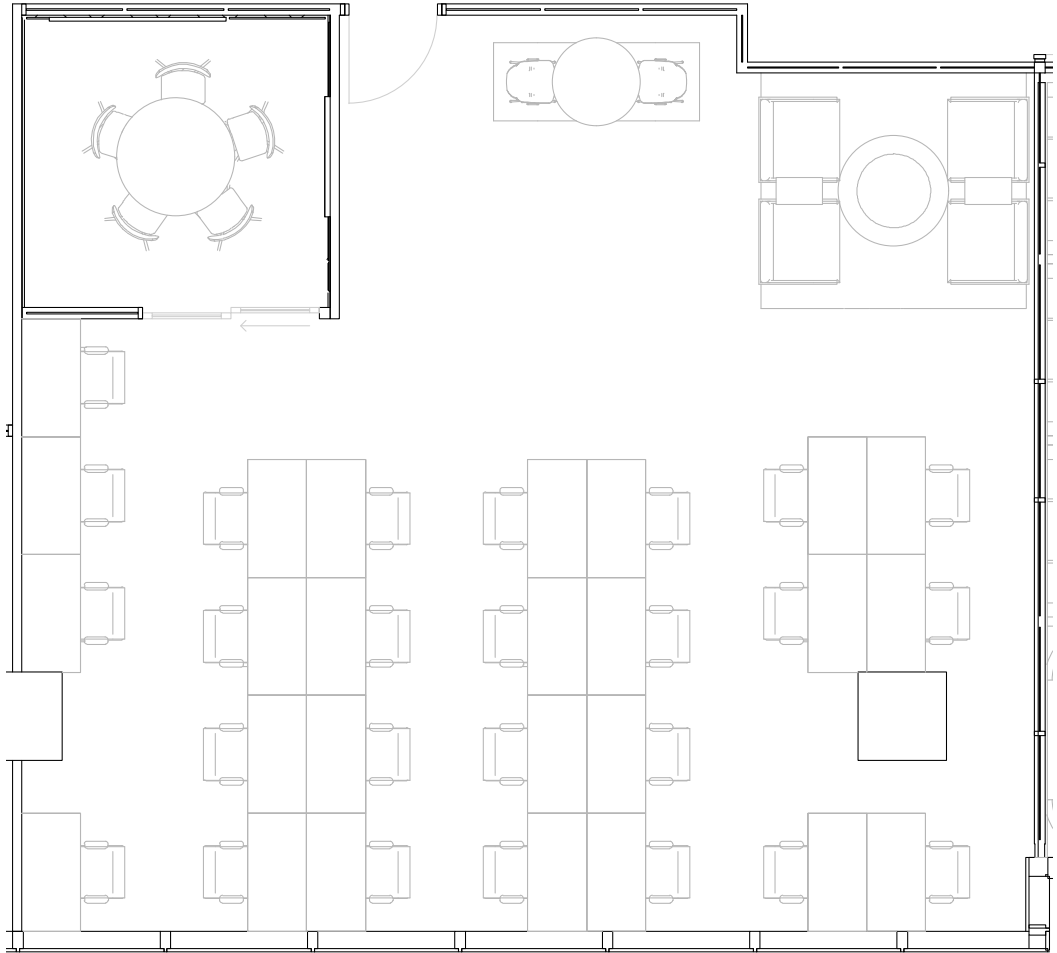
5th Floor

1

PRIVATE OFFICE(S)

2,242 RSF

RENTABLE AREA



Suite 102

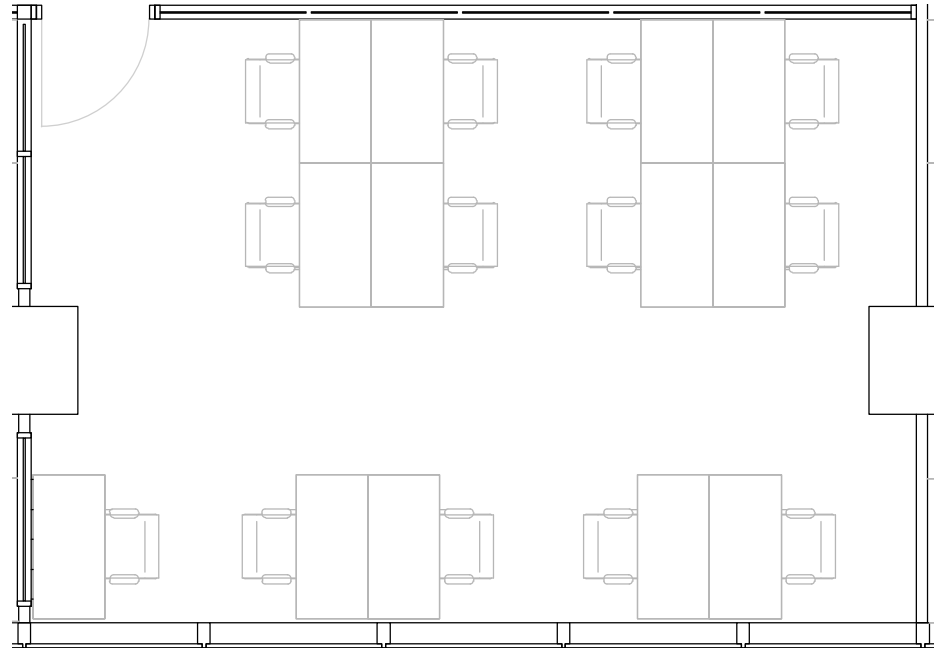
5th Floor

1

PRIVATE OFFICE(S)

899 RSF

RENTABLE AREA



4TH STREET NW



W PEACHTREE STREET NW

ARMSTEAD PLACE NW

Suite 107

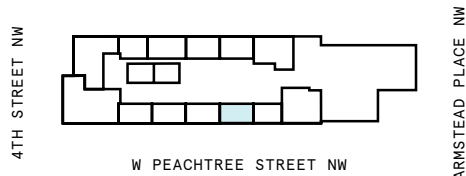
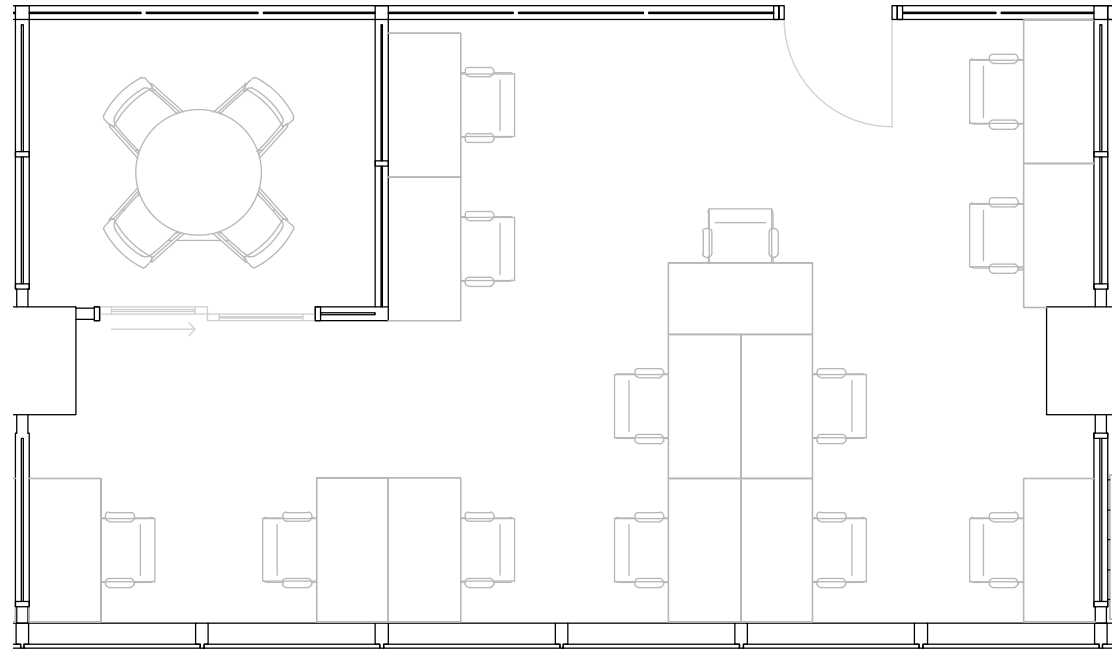
5th Floor

1

PRIVATE OFFICE(S)

1,073 RSF

RENTABLE AREA



Suite 108

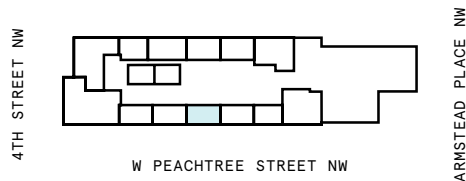
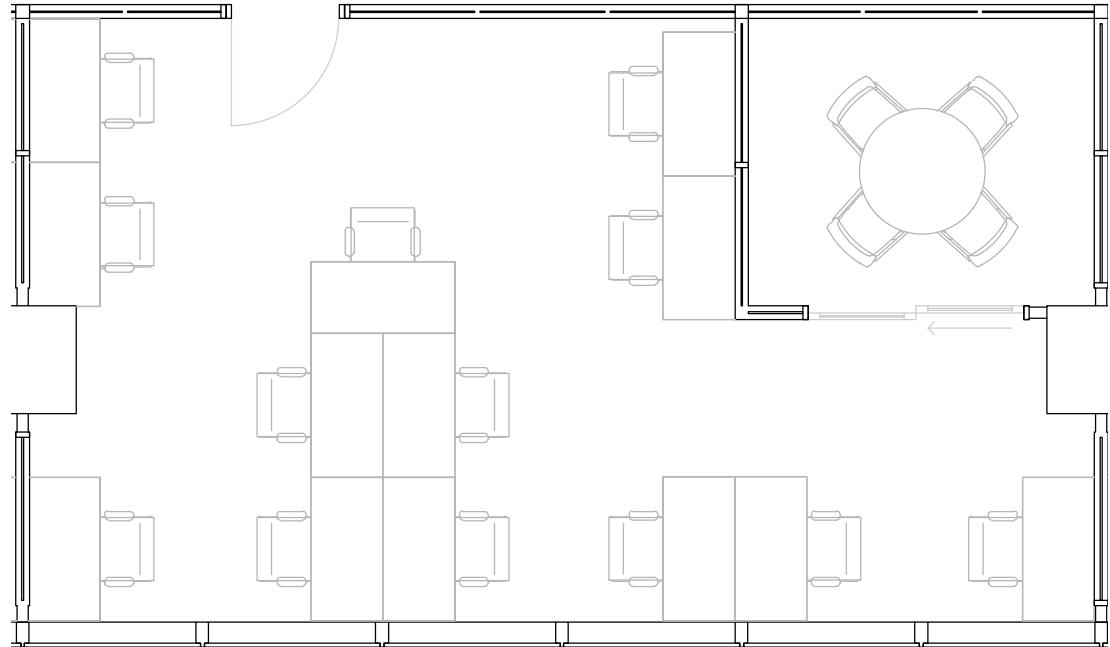
5th Floor

1

PRIVATE OFFICE(S)

1,073 RSF

RENTABLE AREA



Suite 109

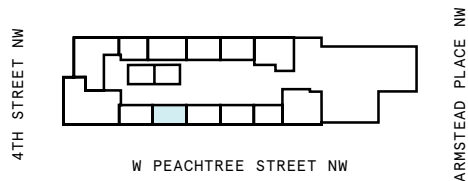
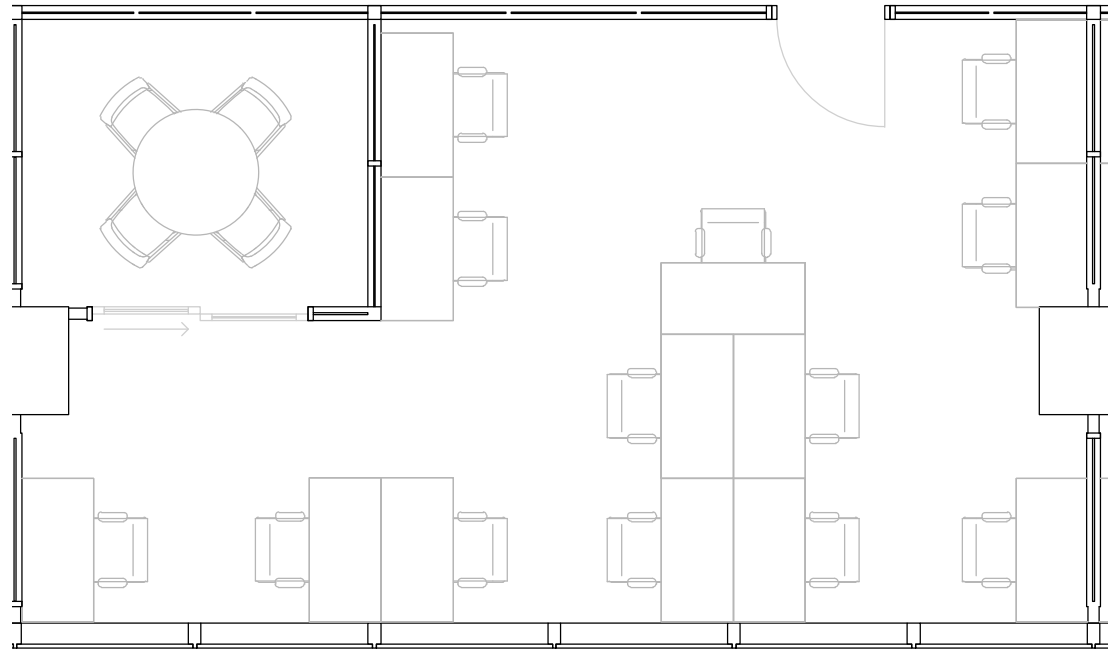
5th Floor

1

PRIVATE OFFICE(S)

1,073 RSF

RENTABLE AREA



Suite 113

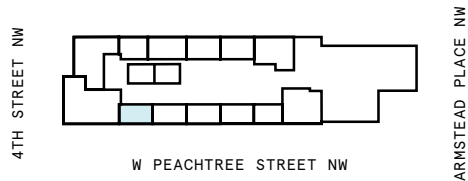
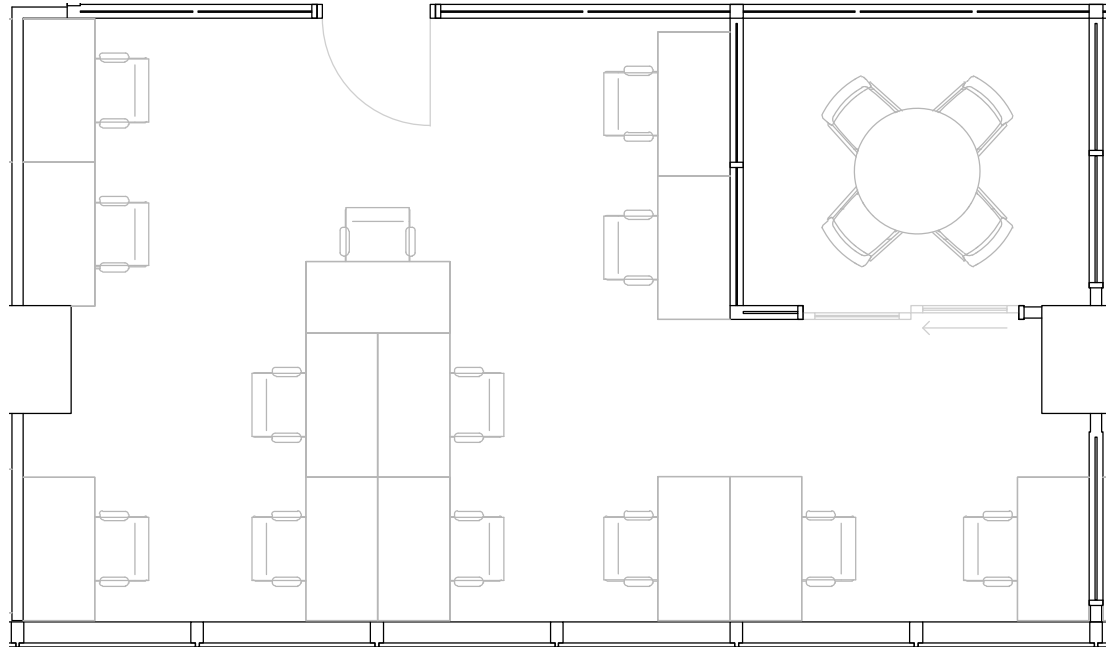
5th Floor

1

PRIVATE OFFICE(S)

1,073 RSF

RENTABLE AREA



Suite 05-W116

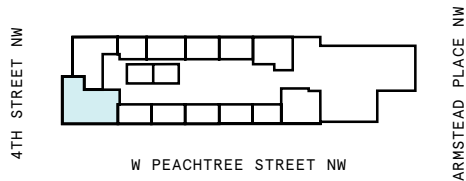
5th Floor

1

PRIVATE OFFICE(S)

3,714 RSF

RENTABLE AREA



Suite 05-W117

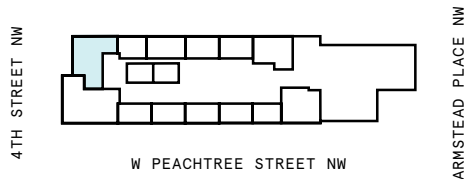
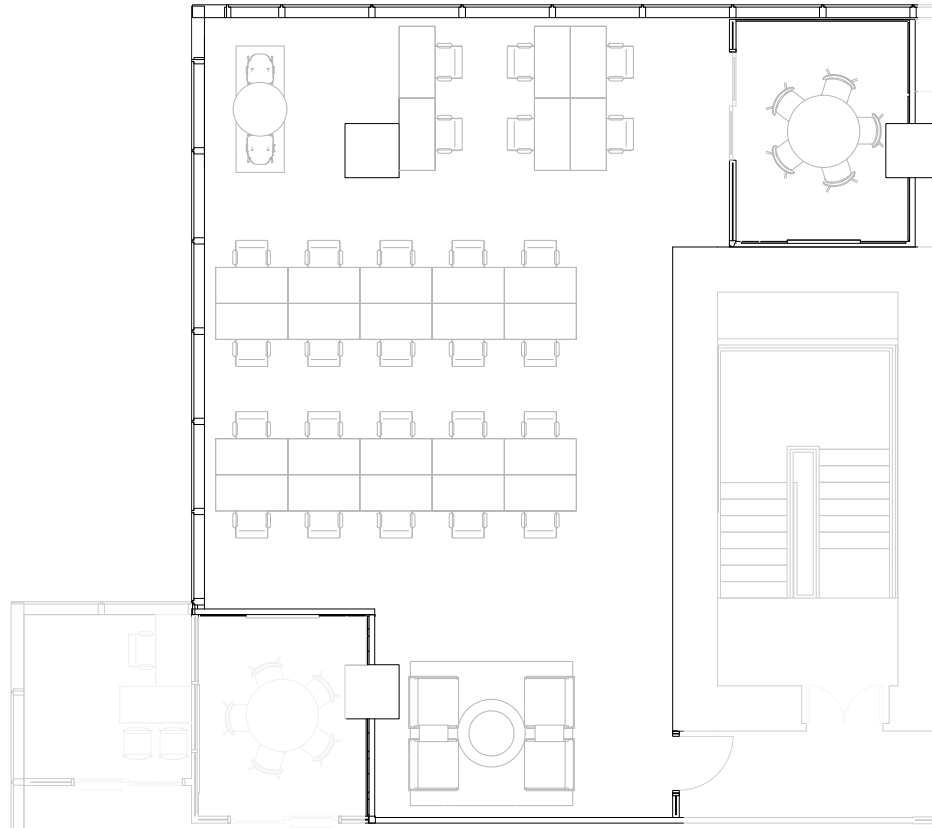
5th Floor

1

PRIVATE OFFICE(S)

2,625 RSF

RENTABLE AREA



Suite 118

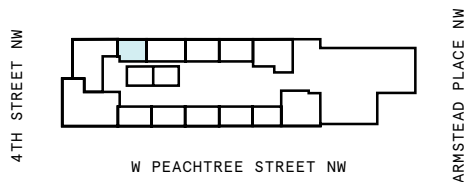
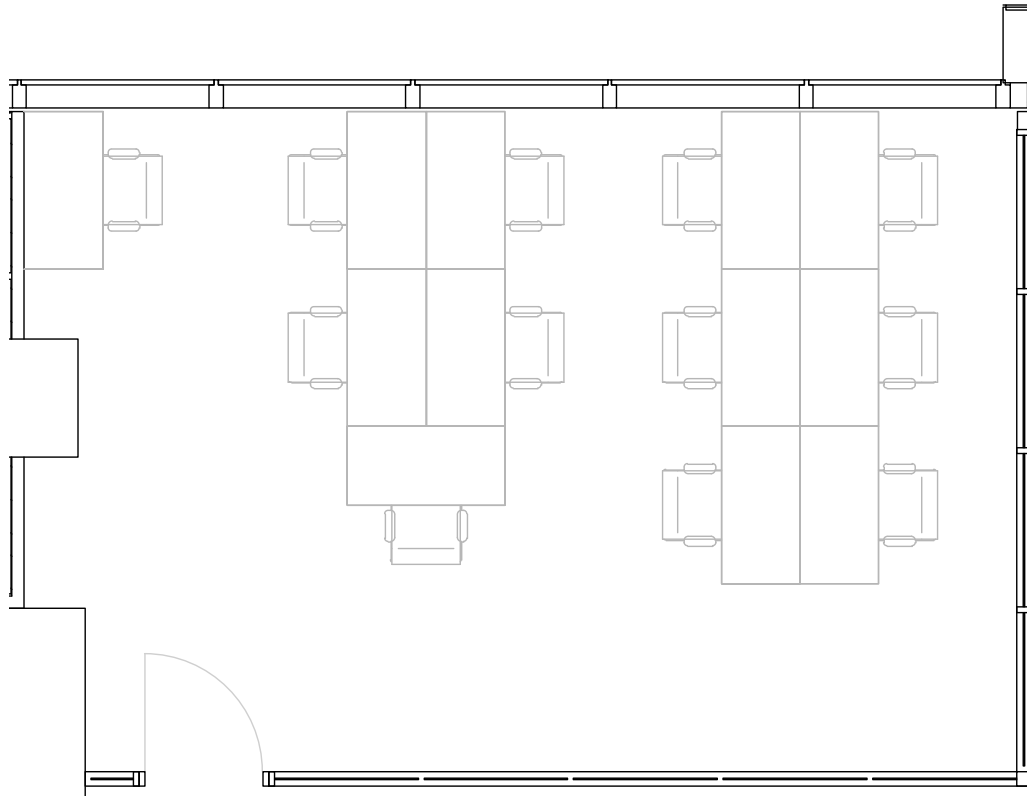
5th Floor

1

PRIVATE OFFICE(S)

923 RSF

RENTABLE AREA



Suite 119

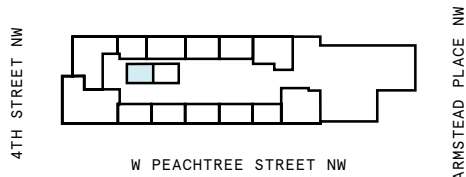
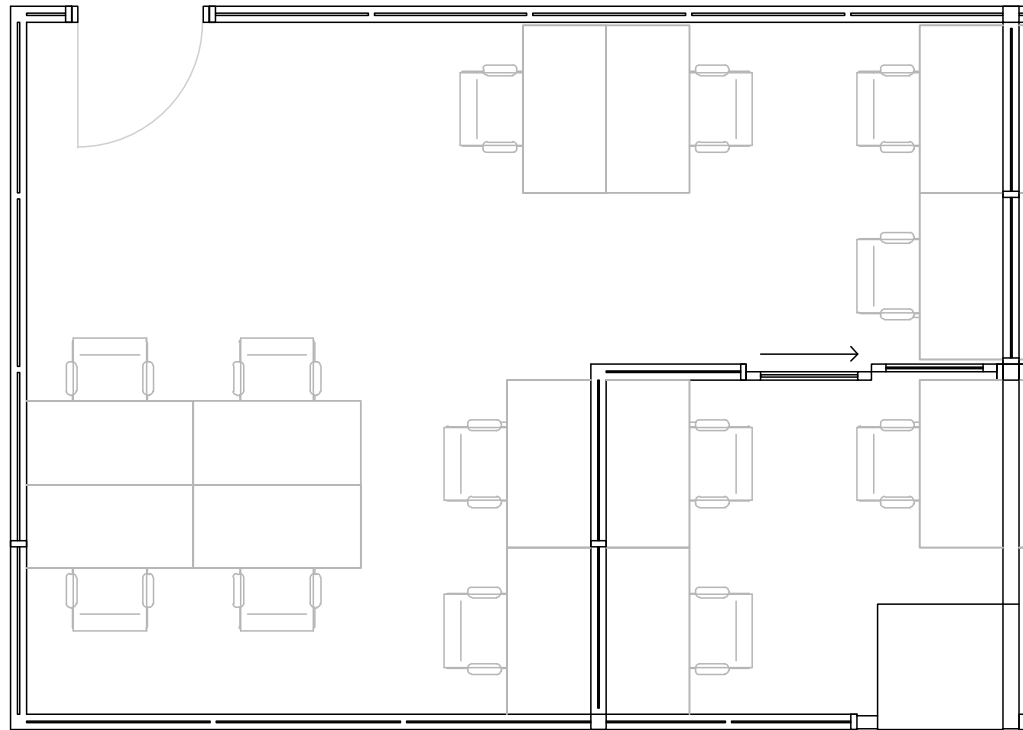
5th Floor

1

PRIVATE OFFICE(S)

795 RSF

RENTABLE AREA



Suite 120

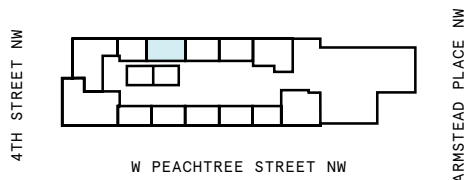
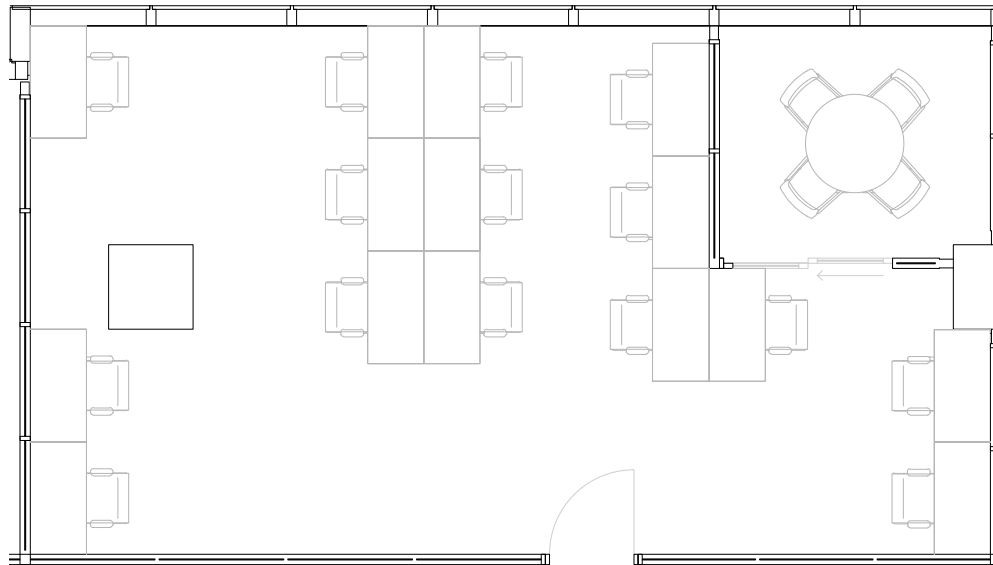
5th Floor

1

PRIVATE OFFICE(S)

1,376 RSF

RENTABLE AREA



Suite 121

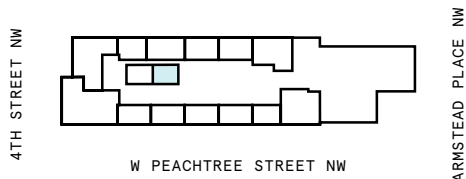
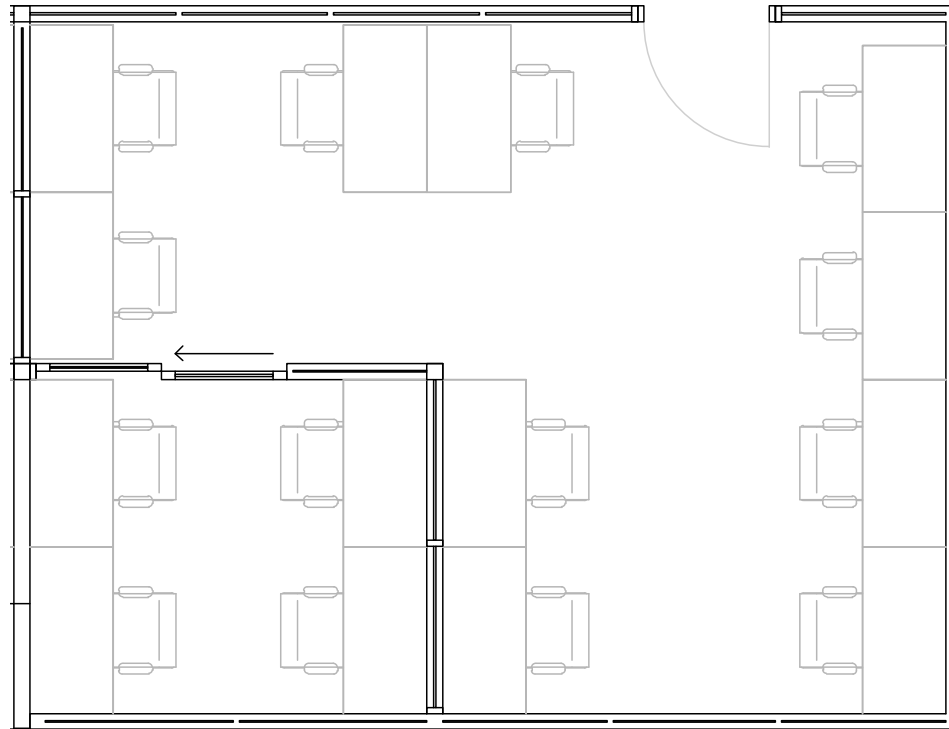
5th Floor

1

PRIVATE OFFICE(S)

761 RSF

RENTABLE AREA

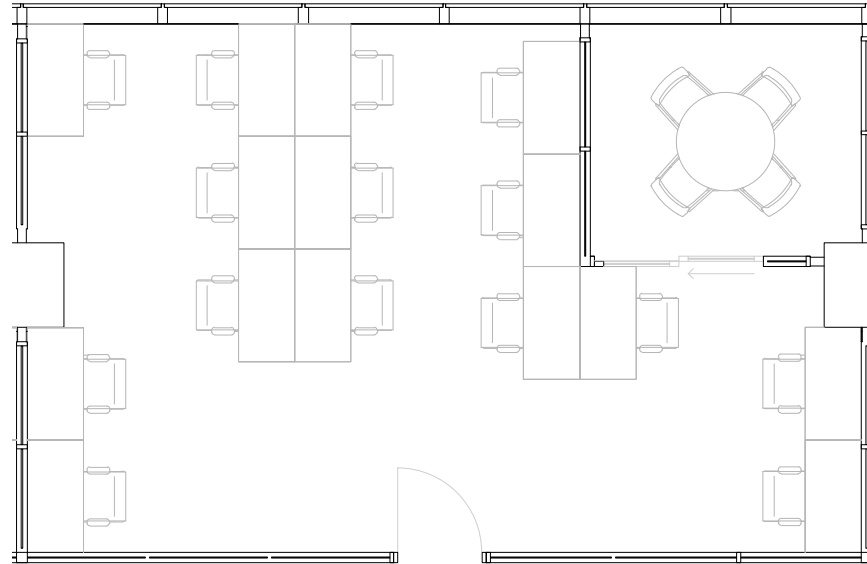


Suite 124

5th Floor

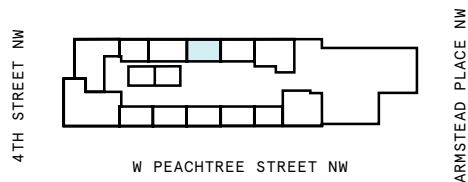
1

PRIVATE OFFICE(S)



1,198 RSF

RENTABLE AREA

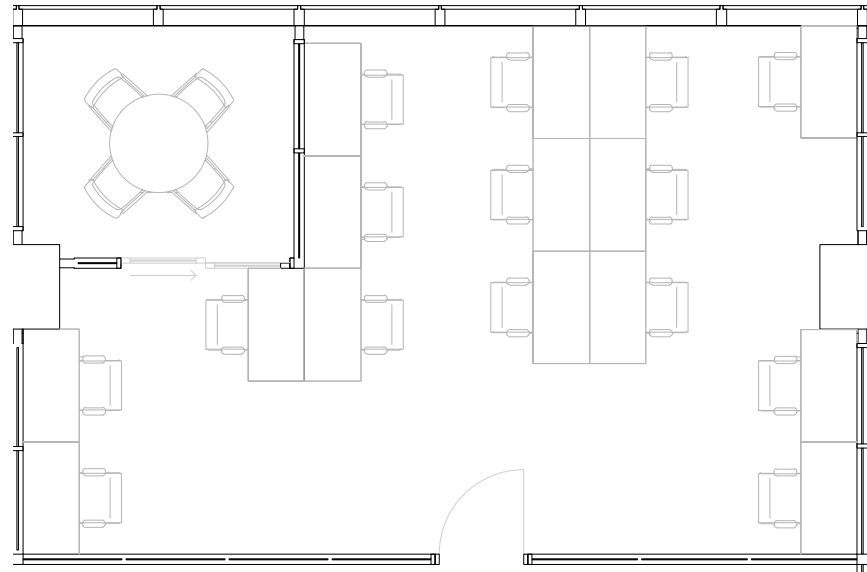


Suite 128

5th Floor

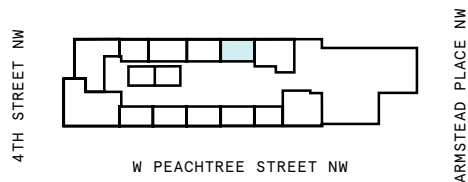
1

PRIVATE OFFICE(S)



1,198 RSF

RENTABLE AREA



Suite 05-W129

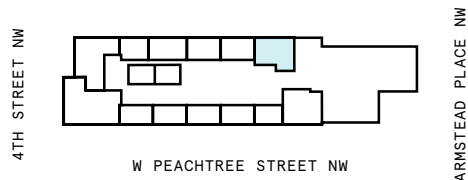
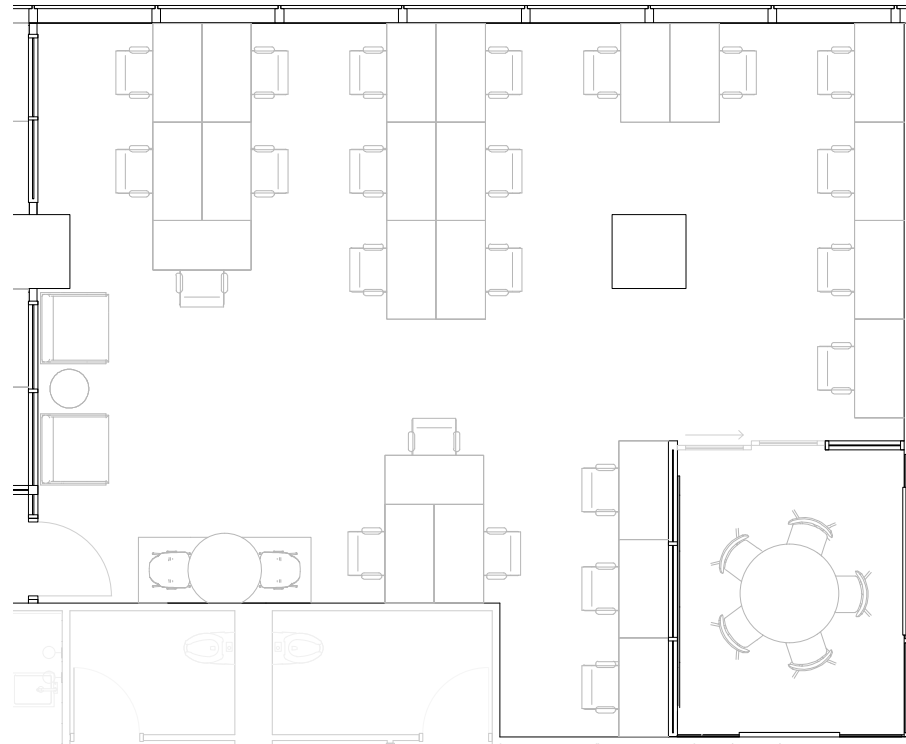
5th Floor

1

PRIVATE OFFICE(S)

1,959 RSF

RENTABLE AREA



Contact

Complete the form [linked here](#) to book a tour or connect with one of our team members.

