



# 1155 Perimeter Center West

## Space availability summary

WeWork @ 1155 Perimeter Center West  
Atlanta, GA

**wework**

[VIEW VIRTUAL TOUR](#)

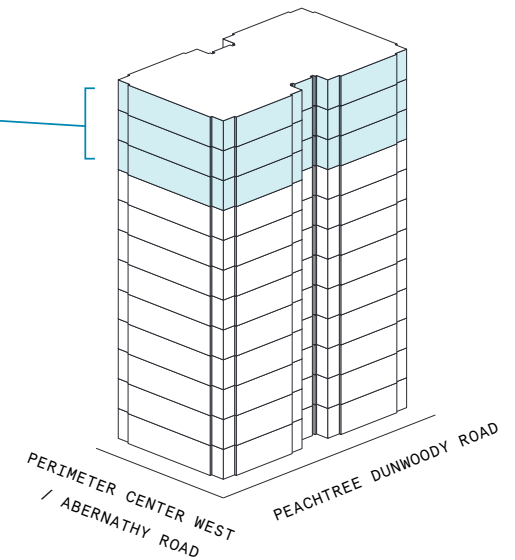
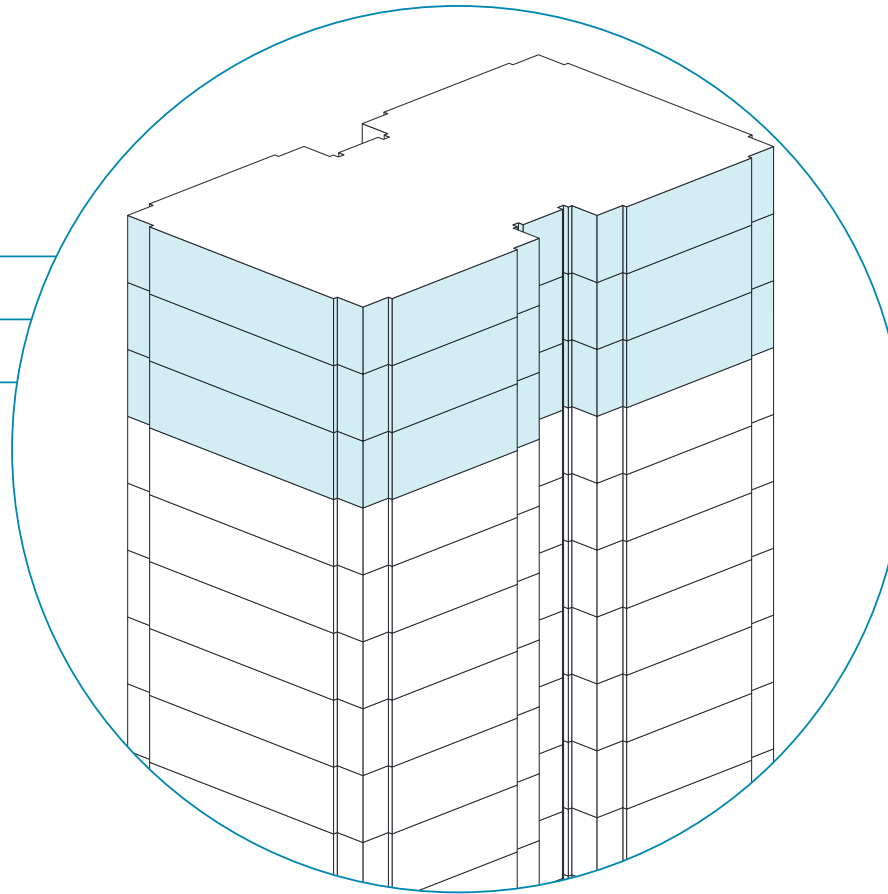
12th Floor 25,227 RSF

11th Floor 18,579 RSF

10th Floor 28,015 RSF

**71,821**

TOTAL WEWORK RSF



# 1155 Perimeter Center West

At a glance

Workspaces designed for productivity and creativity with flexible size & term

Dedicated, private offices available from 59 to 6,377 RSF

Move-in ready offices furnished & wired

**12**

TOTAL BUILDING FLOORS

**310,194**

TOTAL BUILDING SQ FT

All dimensions are approximate and subject to variances. It is your obligation to independently verify the particulars of the property. WeWork reserves the right to make changes.





## Elevated, modern and accessible

---

The newly renovated, multi-use tower 1155 Perimeter Center West is a 12-story modern building located in the small, yet dynamic district of Sandy Springs, just seven miles away from downtown Atlanta. The building boasts unobstructed views, a partial glass façade, and efficient floor plates designed to maximize daylight while providing an uninterrupted flow of spaces. Conveniently located across the street from the Sandy Springs MARTA Station and set near both highways 400 and 285, the location is highly accessible by car and public transit.



# A bustling, contemporary office space with an energetic atmosphere

1155 Perimeter Center West features an upscale, lively ambiance combining functional and inviting accents throughout its modernized office space.

- Designed to maximize natural light, the open layout, large windows, and spacious courtyard create a bright and airy ambiance
- The use of natural materials such as oak wood paneling and millwork, fiber rugs, and rattan pieces are juxtaposed with existing concrete floors, serving to elevate and warm up the spaces
- The furniture selection includes top tier custom designed pieces alongside occasional vintage decor and accents
- The tucked away, angled staircase stands out as a sleek, understated architectural design feature on its own, interconnecting the levels







Custom-designed artwork adorns the reception area, adding a modern edge to the welcome space.



Distinguished and refreshing, the community pantry and kitchen is drenched in natural light throughout the day.

## On-site amenities

---

- High-speed Wi-Fi
- Meeting rooms
- On-site staff
- Unique common areas
- Phone booths
- Business-class printers
- Professional and social events
- Parking
- Fitness center

# Building specifications

---



## Building history

---

Built in 2000  
by Cousins



## Security

---

24/7 onsite security in lobby



## HVAC

---

Monday – Friday: 8am–6pm

Saturday: 9am–1pm

AHU on mechanical room,  
overhead VAV units



## Building size

---

12 stories

310,194 SF



## Elevators

---

6 passenger elevators



## Fire strategy

---

Fully-sprinklered floor



## Ceiling heights

---

12 foot 7 inches



## Certifications

---

LEED Gold

Currently pursuing  
Well Building Standard



## Electrical capacity

---









8.1W/scf

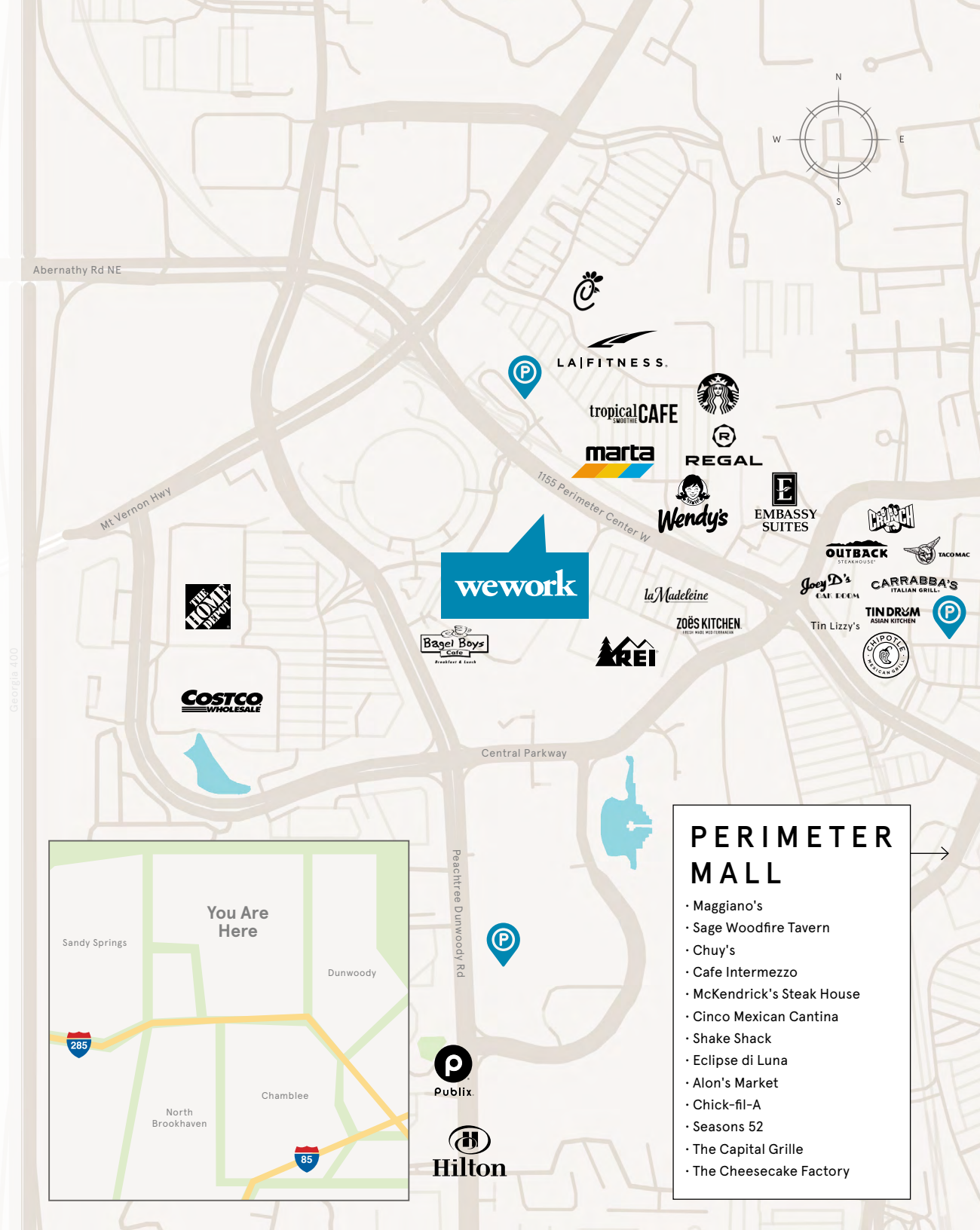


# A bustling and accessible suburban neighborhood set near Atlanta's prominent in-town area

1155 Perimeter Center West is located in Sandy Springs, an area known as a mini-metropolis, with convenient access to major highways and two MARTA stations. Enjoying its big boom in recent years, the elegant suburban zone is home to the bustling headquarters of powerhouses like IBM, UPS, Newell Brands, Cox Enterprises, Mercedes, State Farm, ServiceMaster, Rooms to Go, Zillow, and Deluxe, bringing together a robust professional community across a wide range of industries. The neighborhood has a little bit of everything for everyone, including dining, fitness, shopping, and outdoor activities. The premier shopping development Perimeter Mall hosts a variety of eateries, bars, cafes, entertainment, and retail options.

## Distance to WeWork

Sandy Springs MARTA Station		Walking	2 min
GA-400		Driving	2 min
I-285		Driving	4 min
Buckhead Station		MARTA	9 min
Midtown Station		MARTA	19 min
Five Points Station		MARTA	24 min
Atlanta Airport	 	Driving 25 min MARTA	41 min



## PERIMETER MALL

- Maggiano's
- Sage Woodfire Tavern
- Chuy's
- Cafe Intermezzo
- McKendrick's Steak House
- Cinco Mexican Cantina
- Shake Shack
- Eclipse di Luna
- Alon's Market
- Chick-fil-A
- Seasons 52
- The Capital Grille
- The Cheesecake Factory

# 10th Floor

28,015 RSF



4

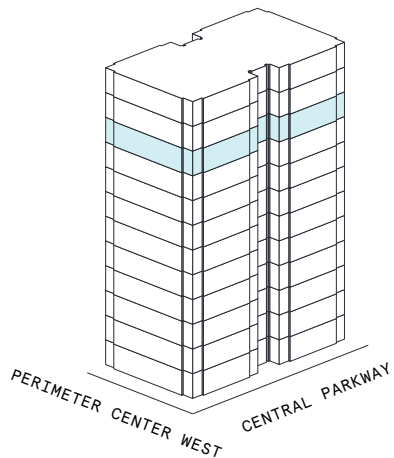
MEETING ROOM(S)

1

SHARED WORKSPACE(S)

## LEGEND

- MEETING ROOM
- SHARED WORKSPACE
- DEDICATED SPACE





# Suite W110

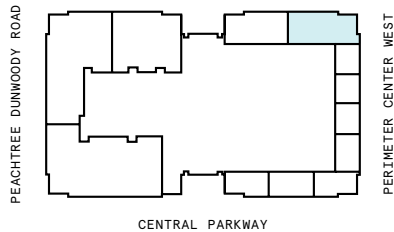
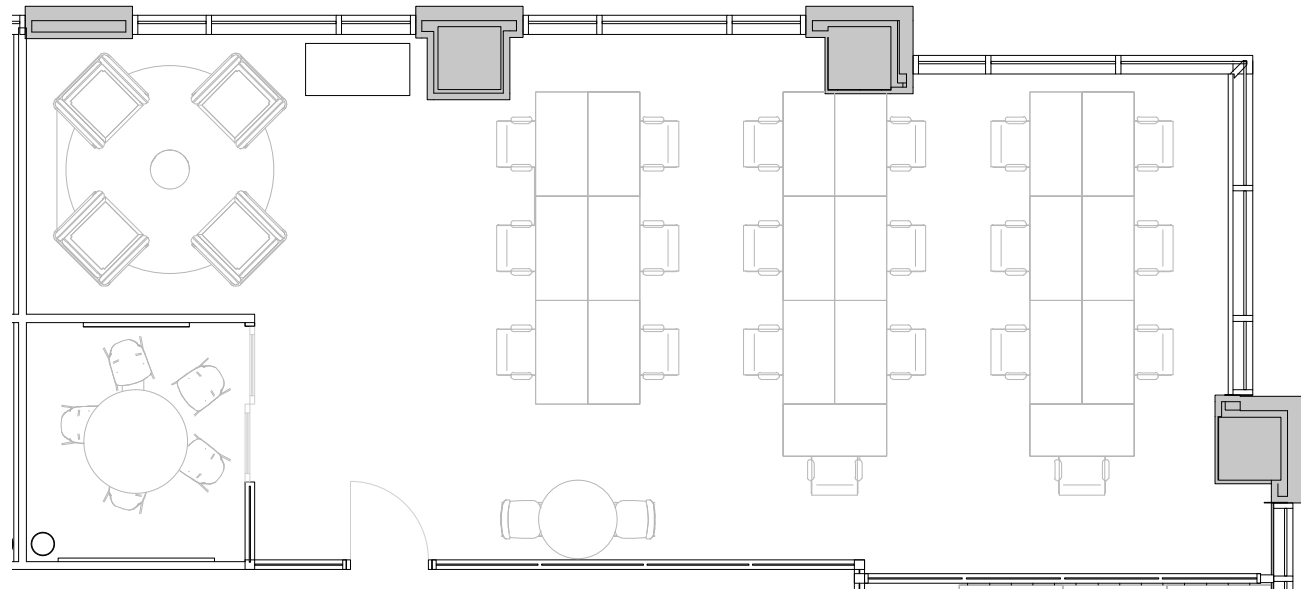
10th Floor

1

PRIVATE OFFICE(S)

1,886 RSF

RENTABLE AREA



# Suite W112

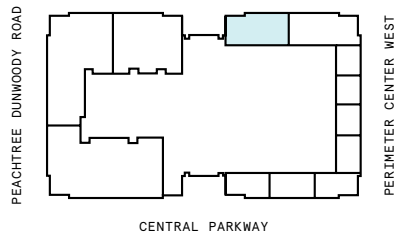
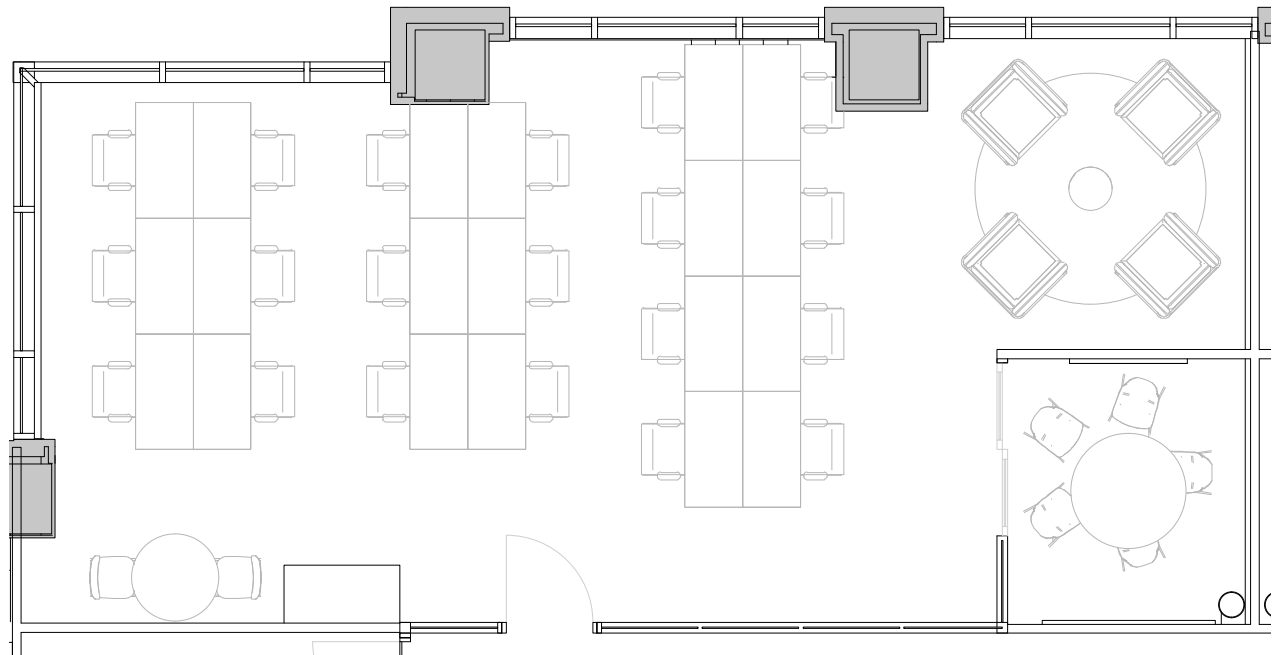
10th Floor

1

PRIVATE OFFICE(S)

1,674 RSF

RENTABLE AREA

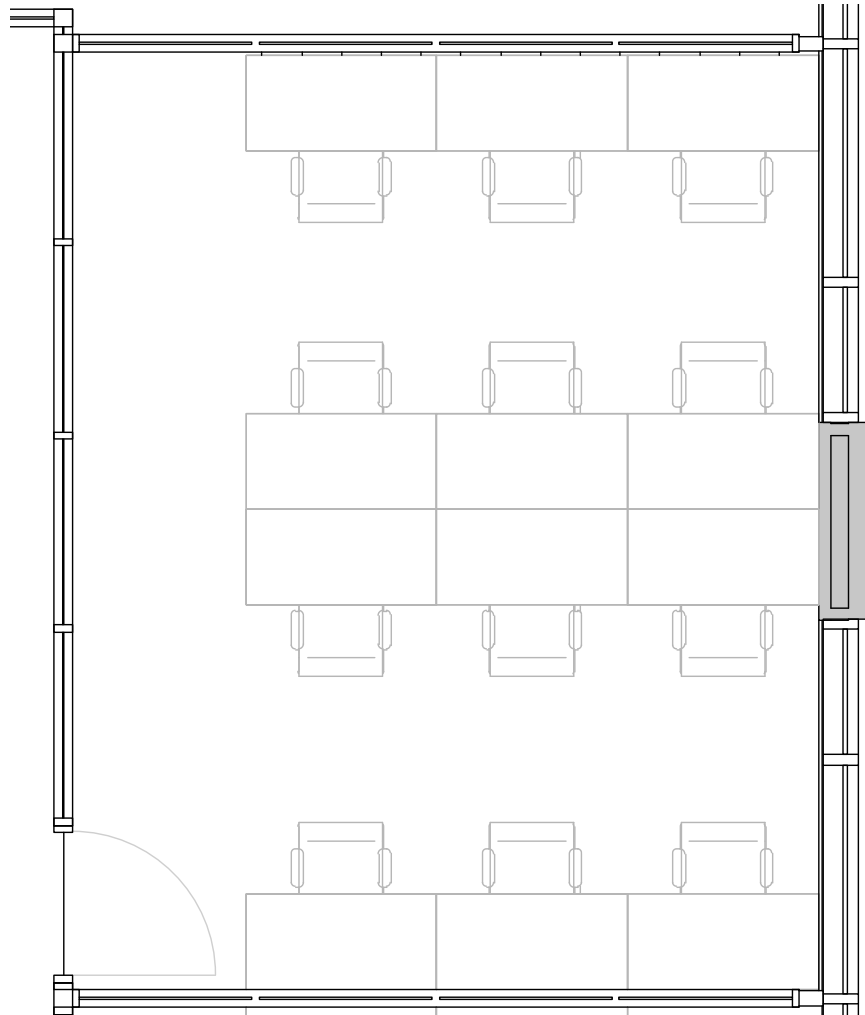
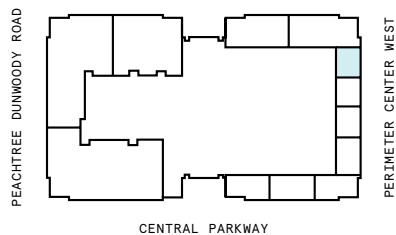




# Suite 115

## 10th Floor

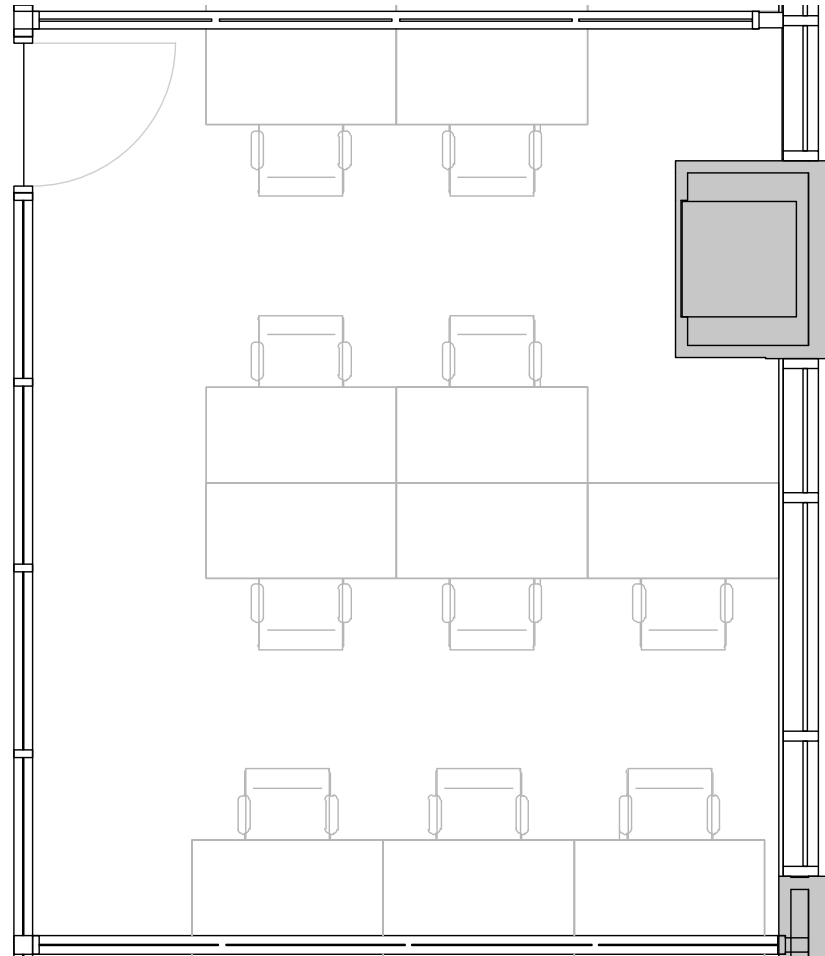
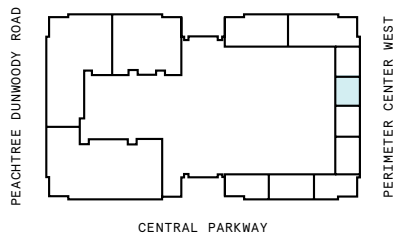
**640 RSF**  
RENTABLE AREA



# Suite 120

## 10th Floor

**610 RSF**  
RENTABLE AREA

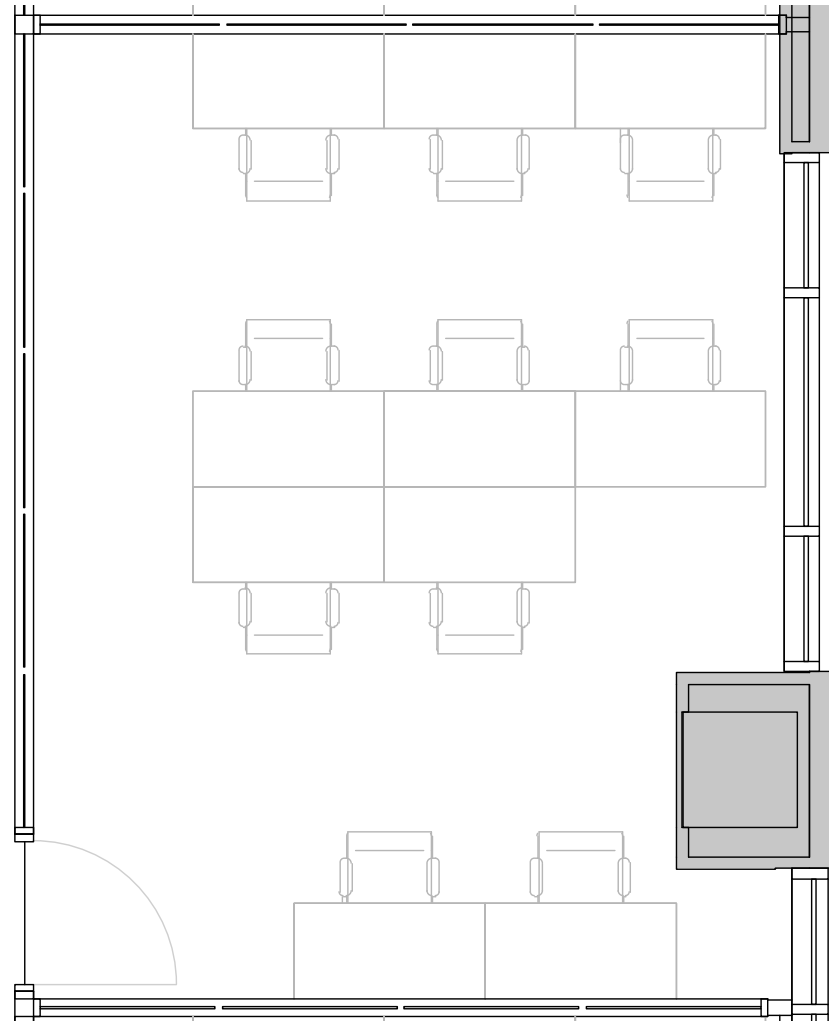
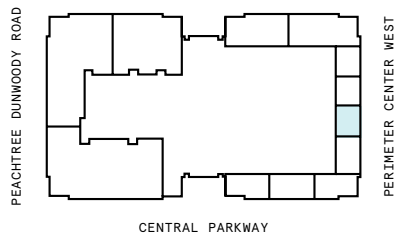




# Suite 121

## 10th Floor

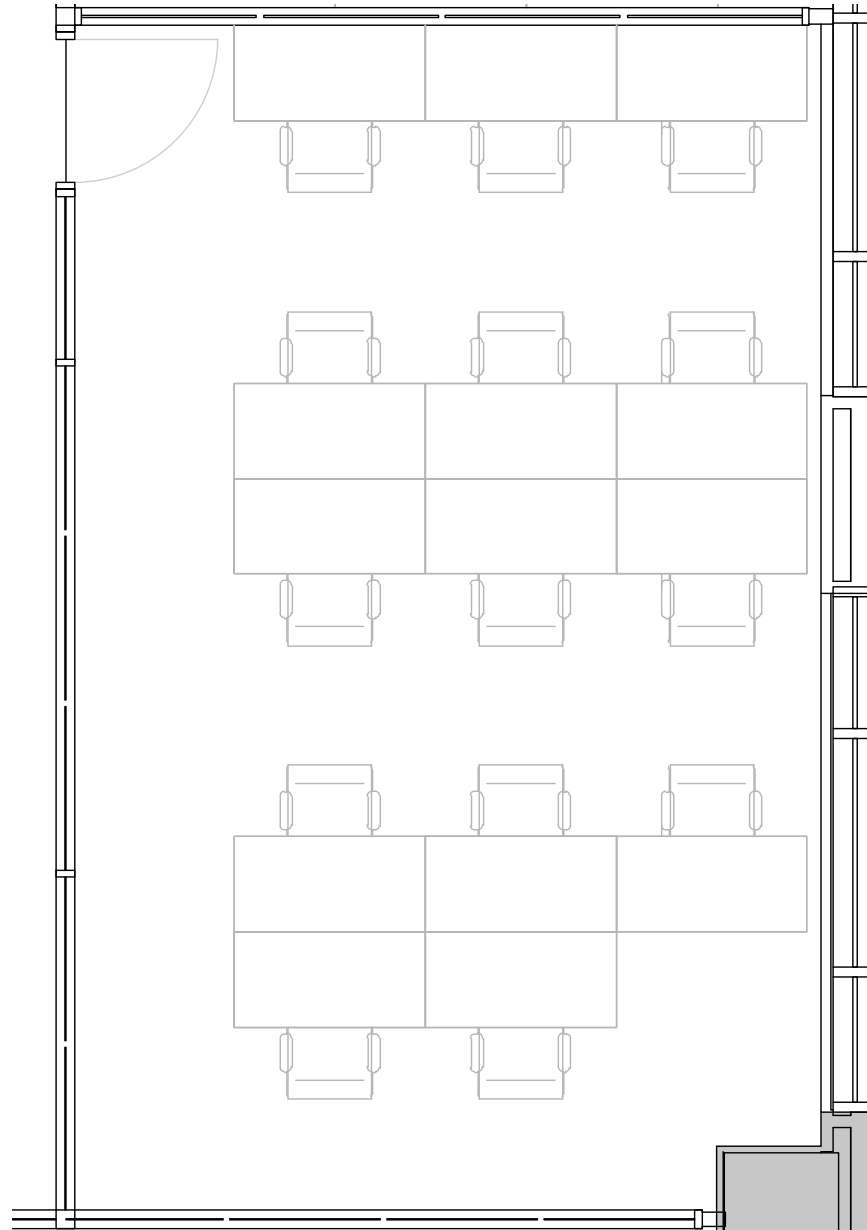
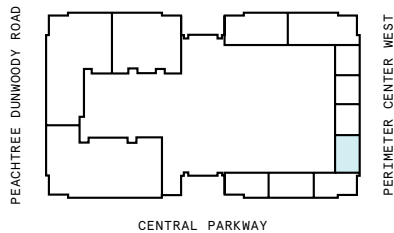
**652 RSF**  
RENTABLE AREA



# Suite 122

10th Floor

811 RSF  
RENTABLE AREA

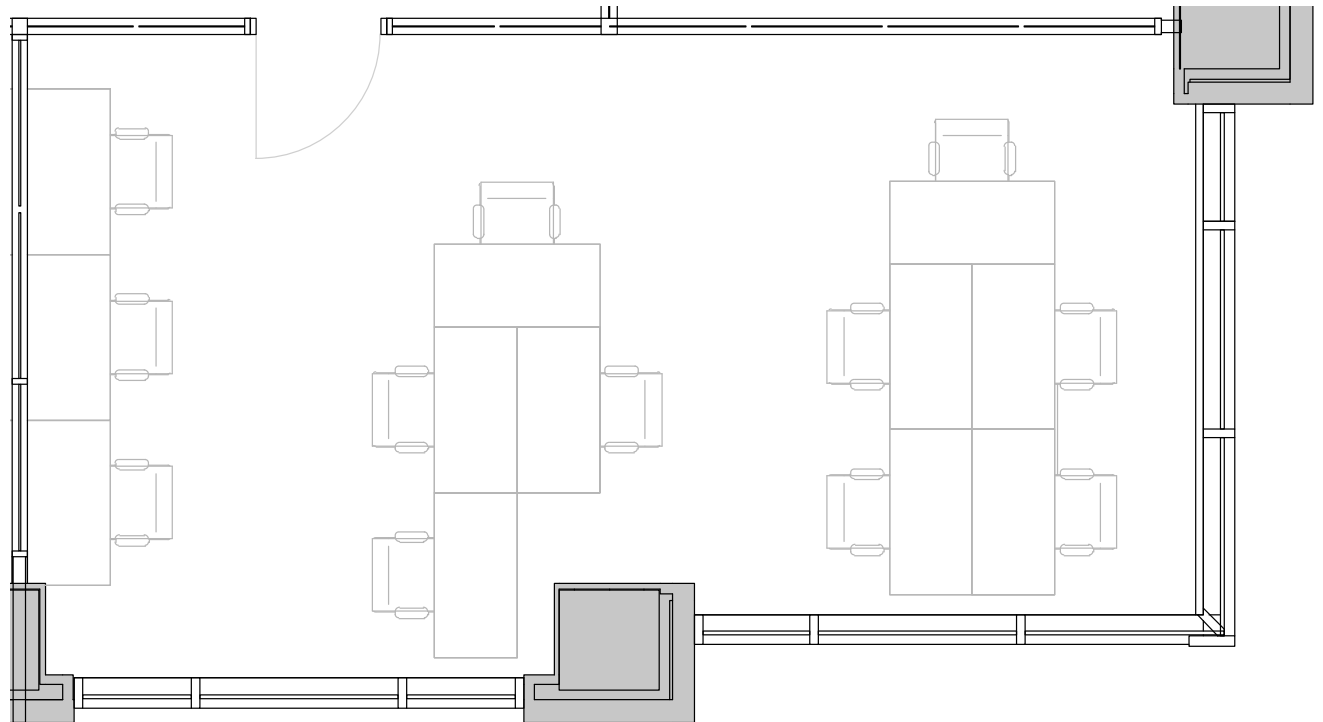
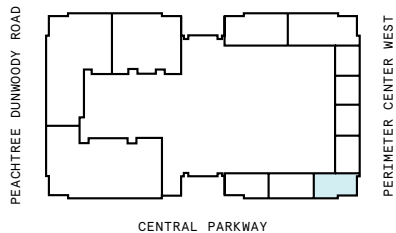




# Suite 123

10th Floor

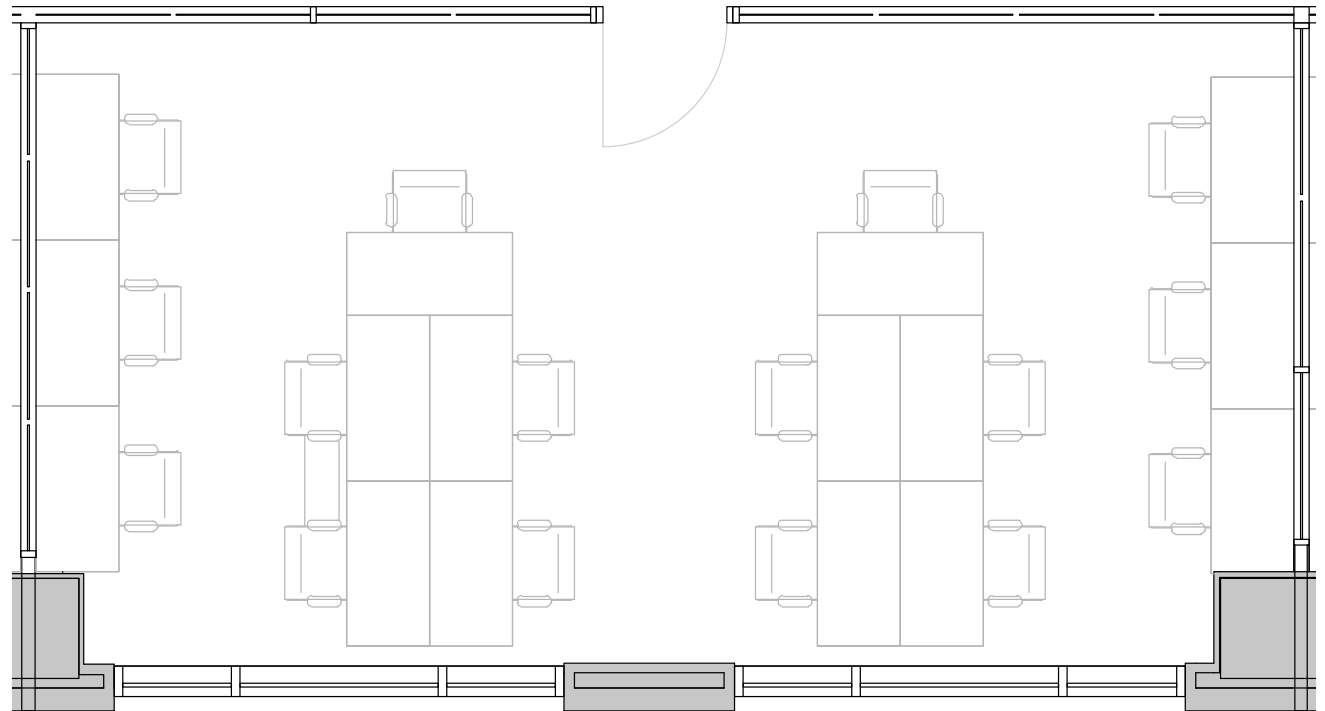
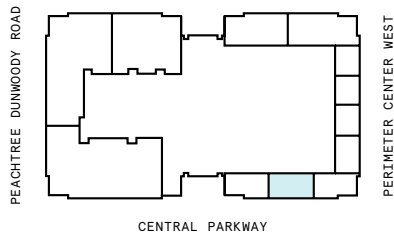
850 RSF  
RENTABLE AREA



# Suite 127

10th Floor

968 RSF  
RENTABLE AREA

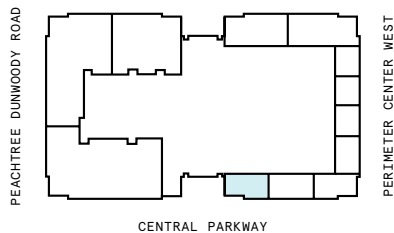
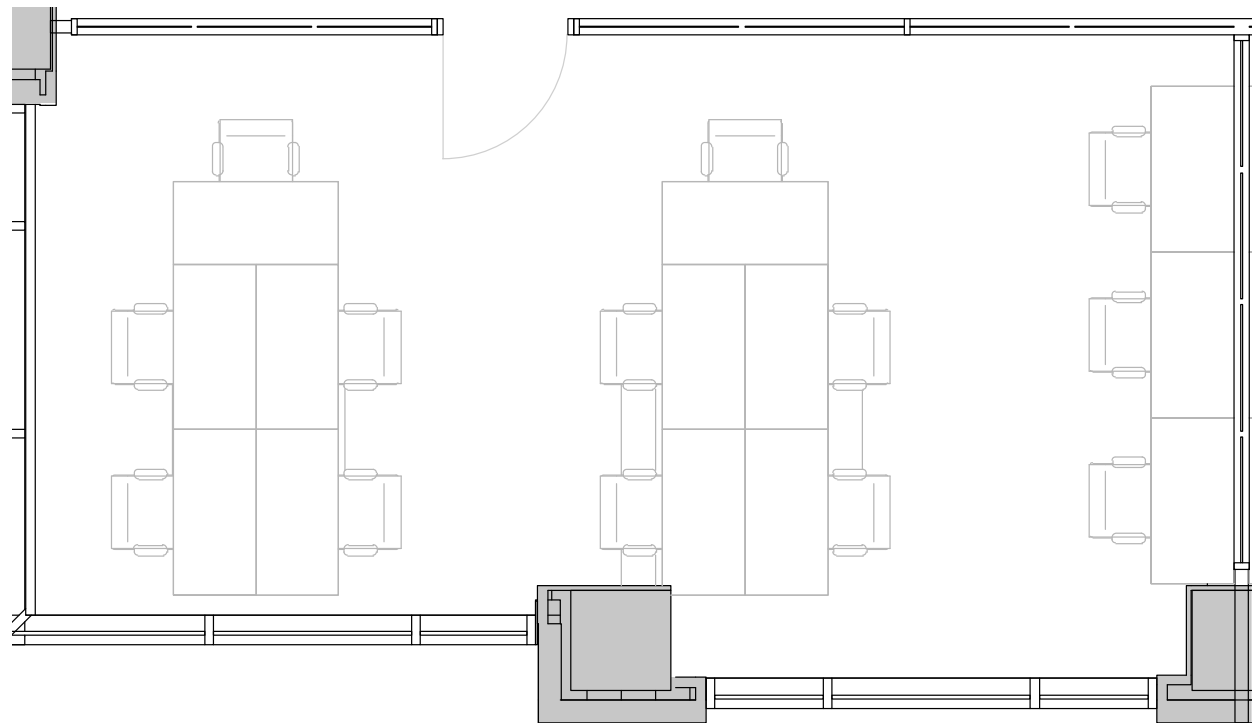




# Suite 130

10th Floor

871 RSF  
RENTABLE AREA



# Suite W135

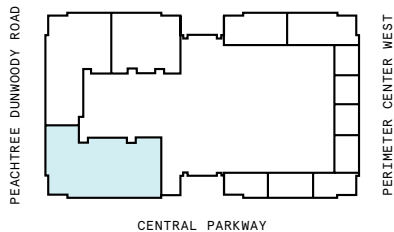
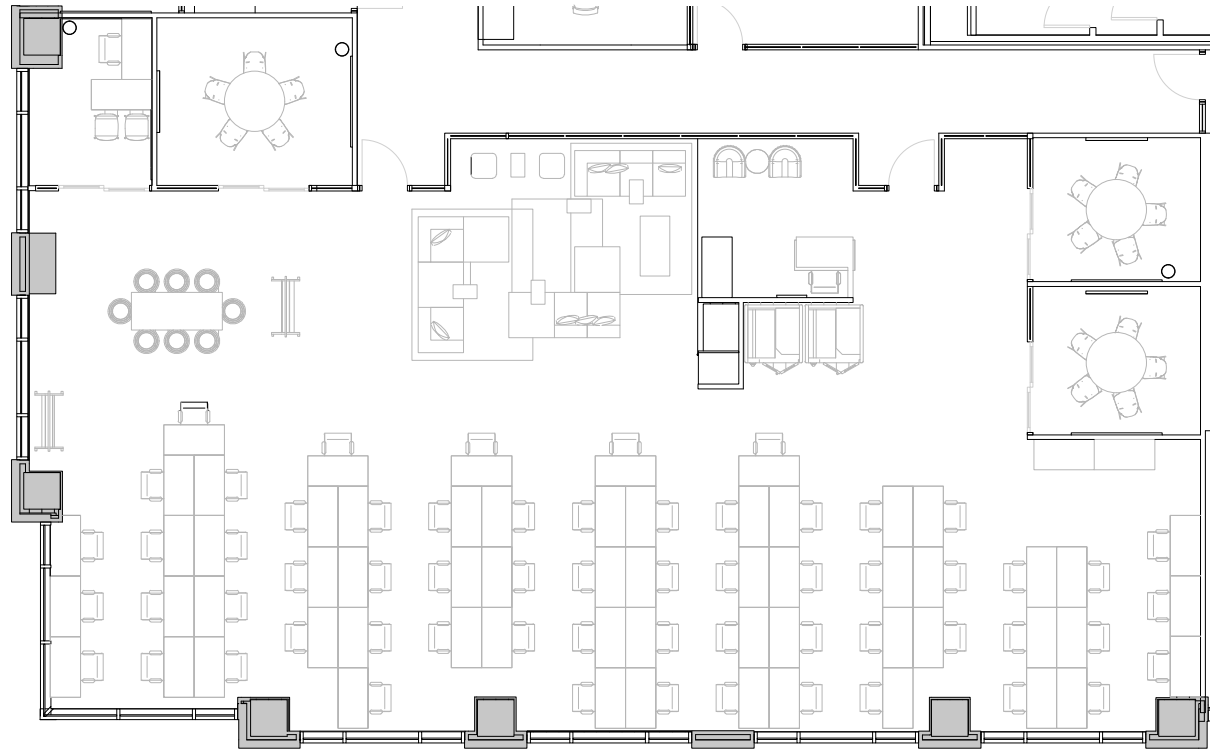
## 10th Floor

4

PRIVATE OFFICE(S)

6,377 RSF

RENTABLE AREA





# Suite W136

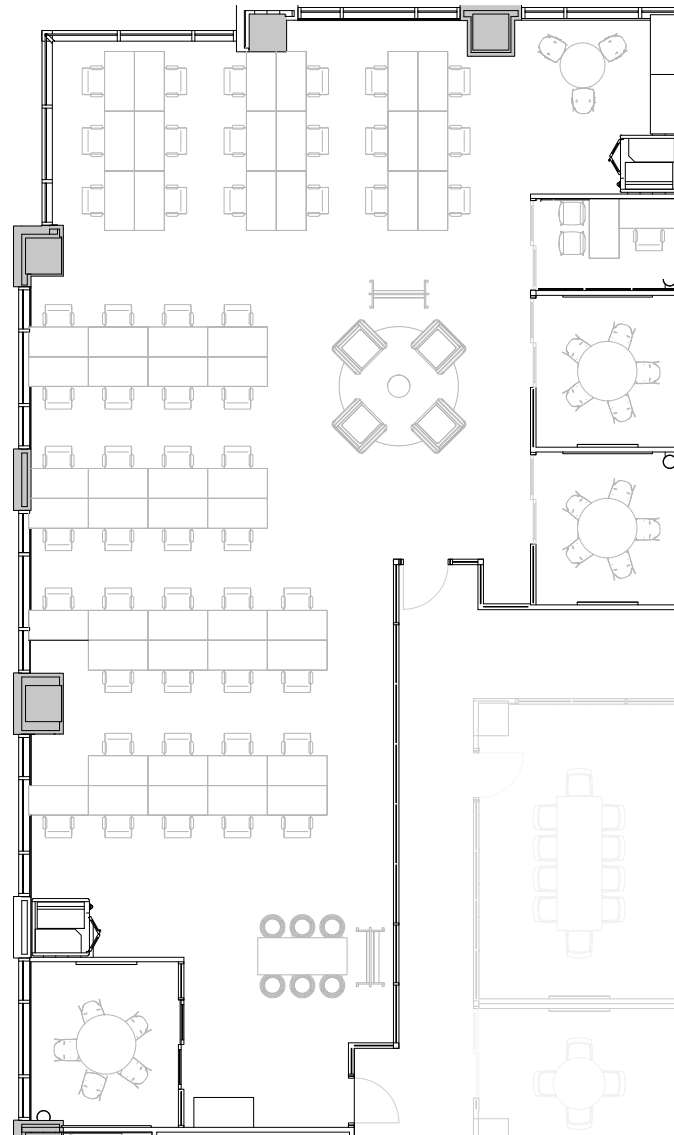
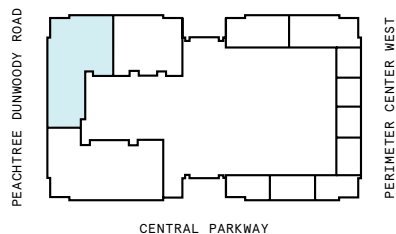
10th Floor

4

PRIVATE OFFICE(S)

5,064 RSF

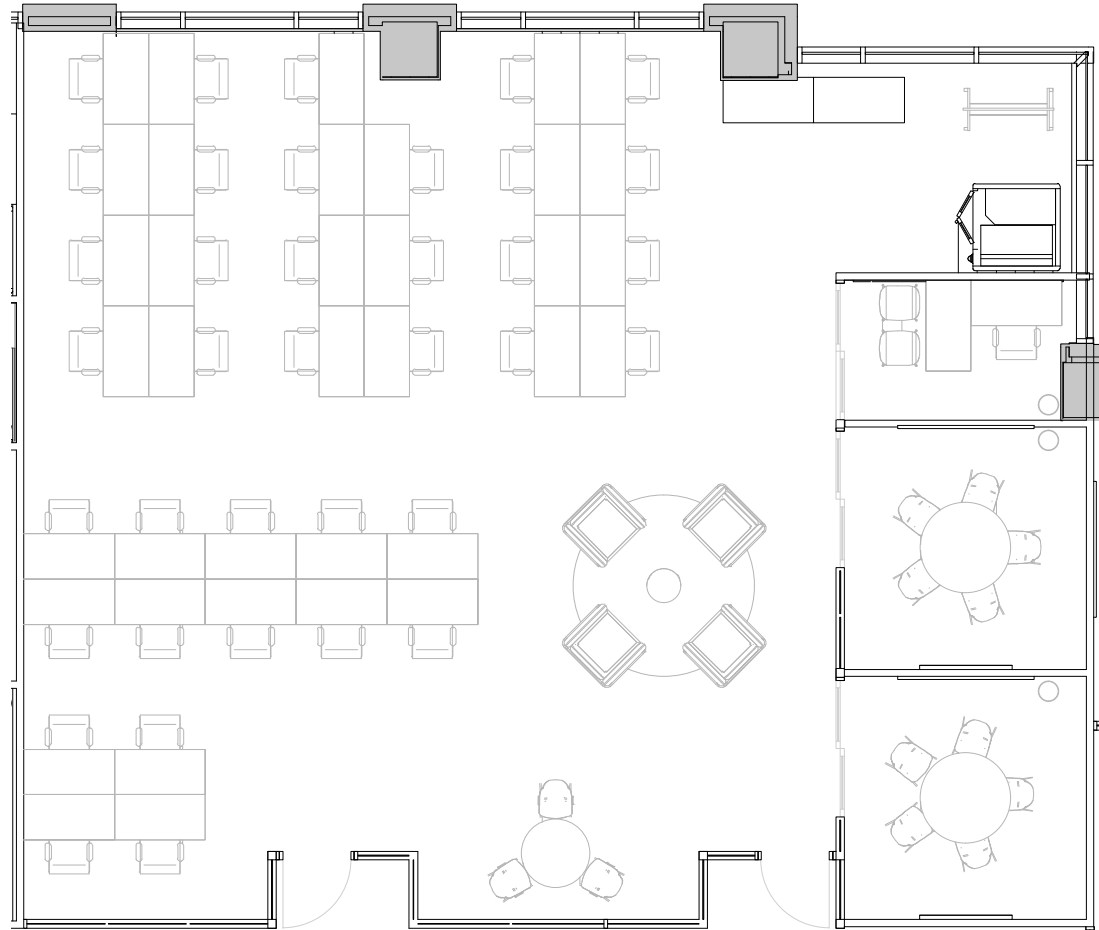
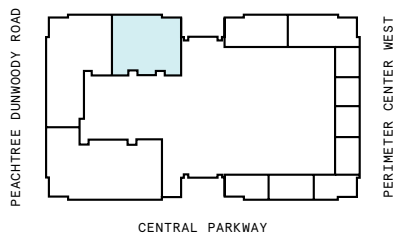
RENTABLE AREA



# Suite W137

10th Floor

3,615 RSF  
RENTABLE AREA



# 11th Floor

18,579 RSF






4

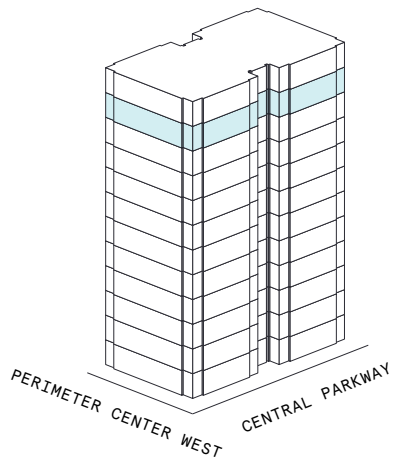
MEETING ROOM(S)

1

SHARED WORKSPACE(S)

## LEGEND

-  MEETING ROOM
-  SHARED WORKSPACE
-  DEDICATED SPACE



PEACHTREE DUNWOODY ROAD



PERIMETER CENTER WEST

CENTRAL PARKWAY



# Suite 113

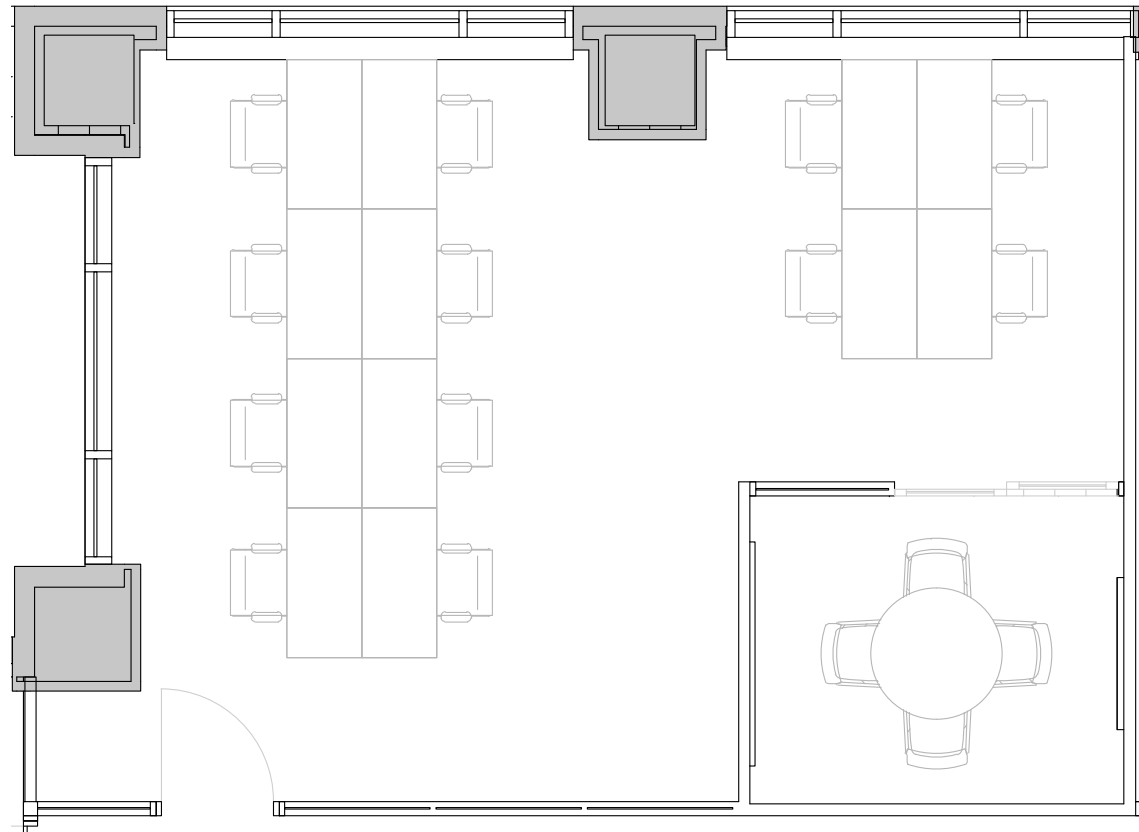
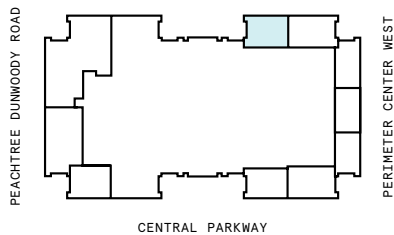
## 11th Floor

1

PRIVATE OFFICE(S)

1,176 RSF

RENTABLE AREA



# Suite 114

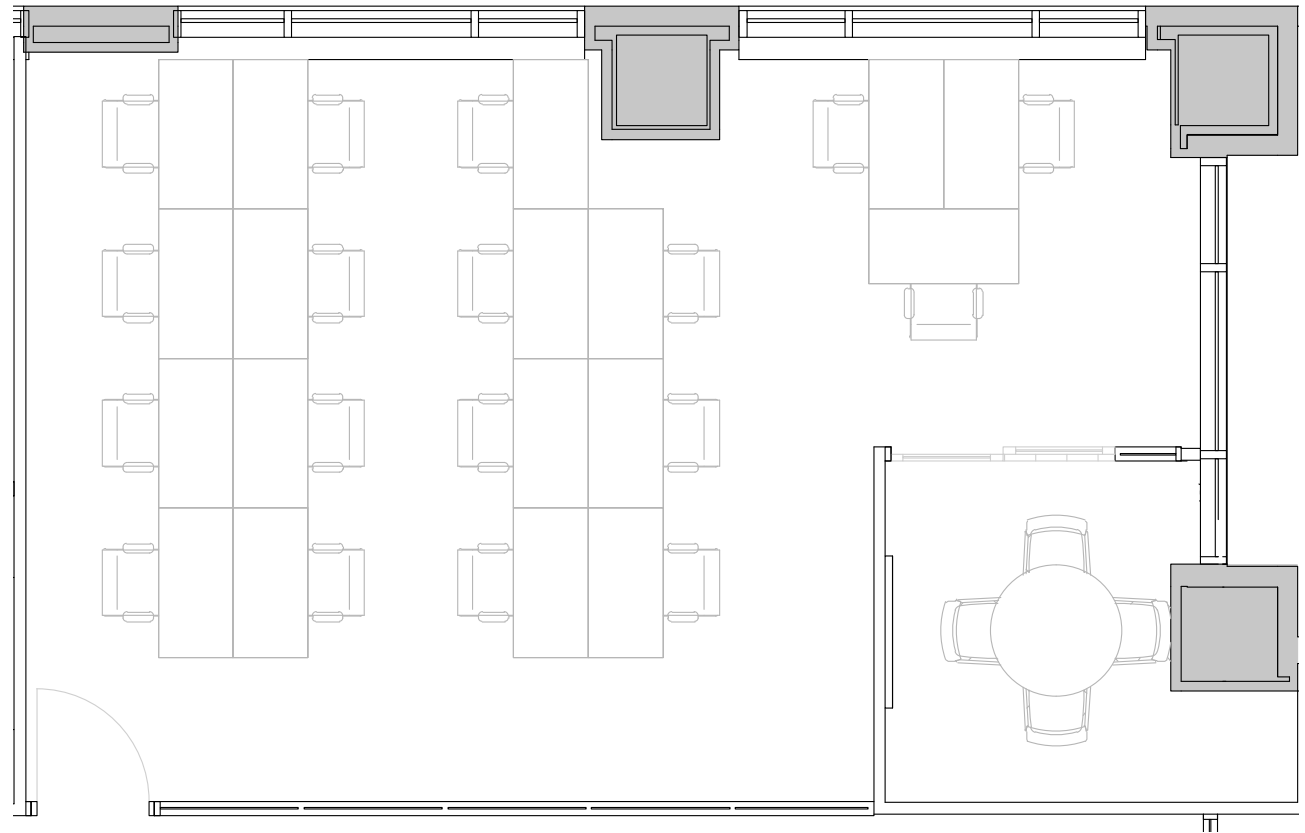
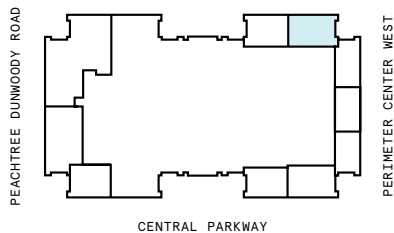
## 11th Floor

1

PRIVATE OFFICE(S)

1,374 RSF

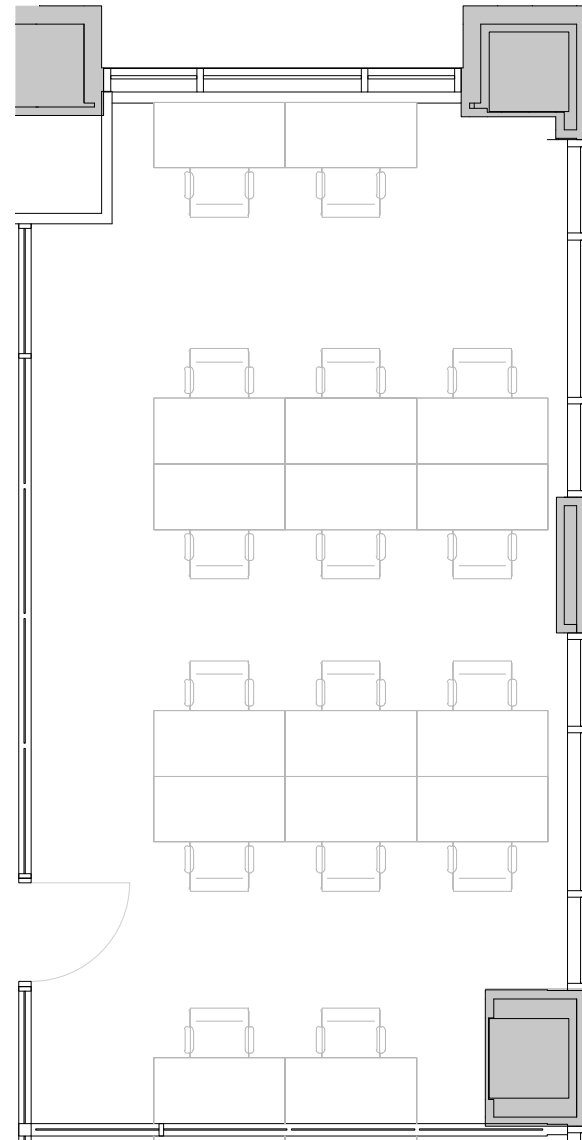
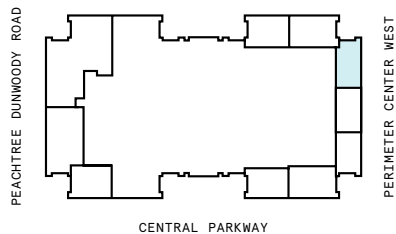
RENTABLE AREA



# Suite 115

11th Floor

1,062 RSF  
RENTABLE AREA

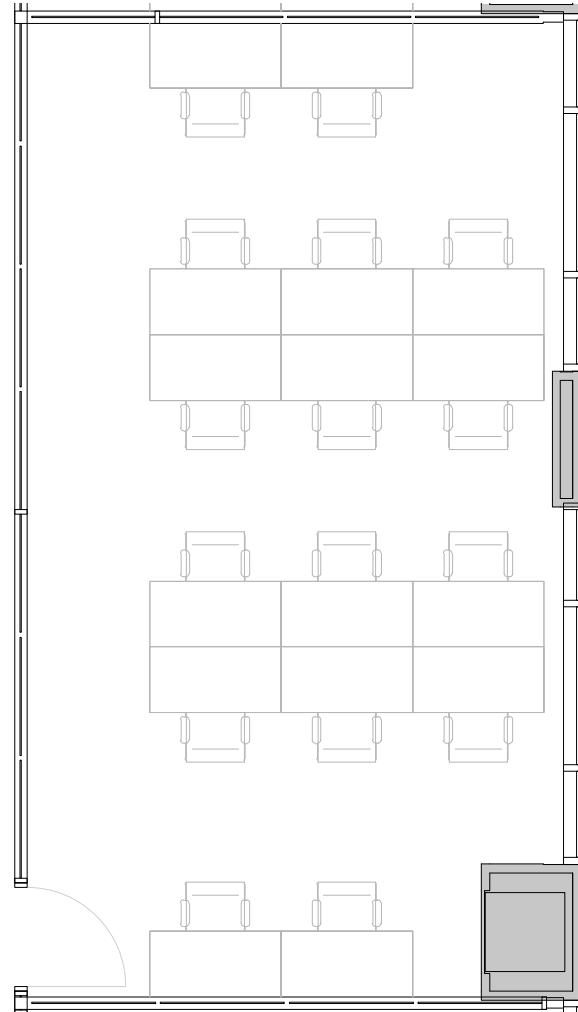
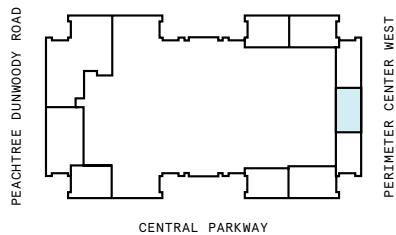




# Suite 120

11th Floor

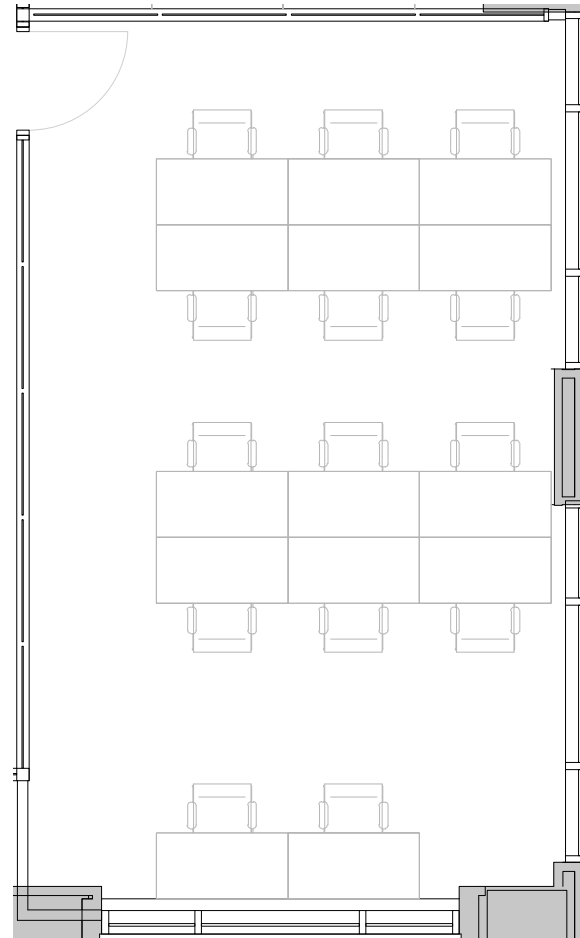
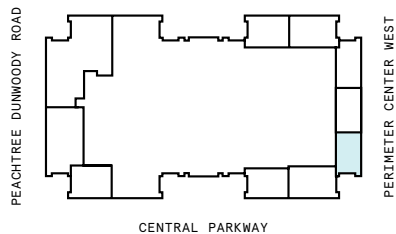
1,022 RSF  
RENTABLE AREA



# Suite 121

## 11th Floor

937 RSF  
RENTABLE AREA



# Suite 122

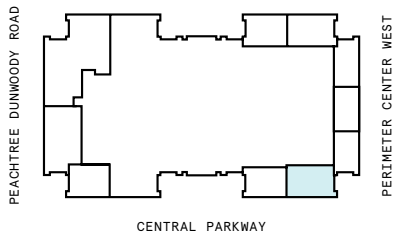
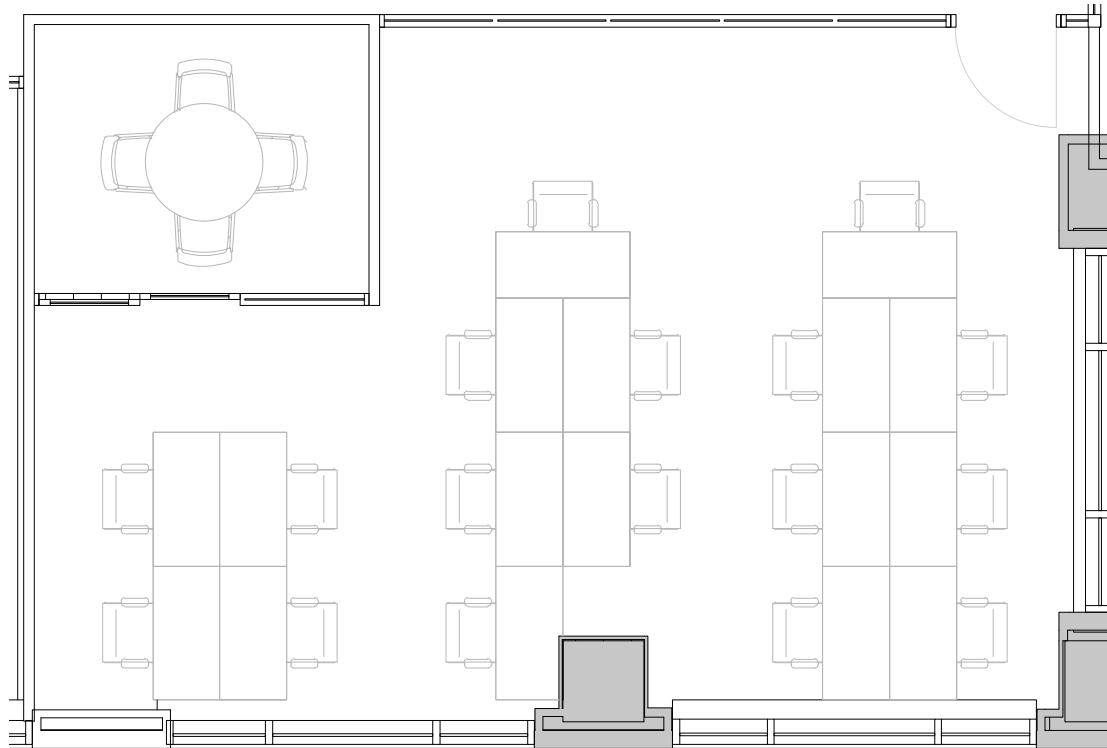
## 11th Floor

1

PRIVATE OFFICE(S)

1,375 RSF

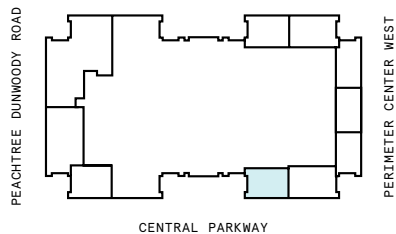
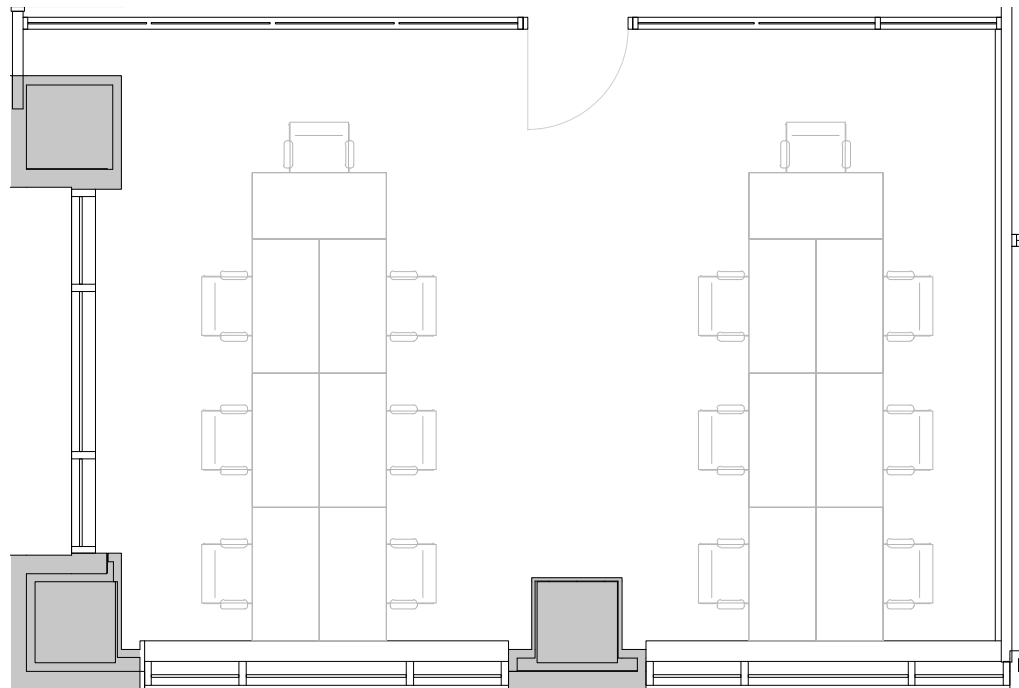
RENTABLE AREA



# Suite 128

11th Floor

1,091 RSF  
RENTABLE AREA

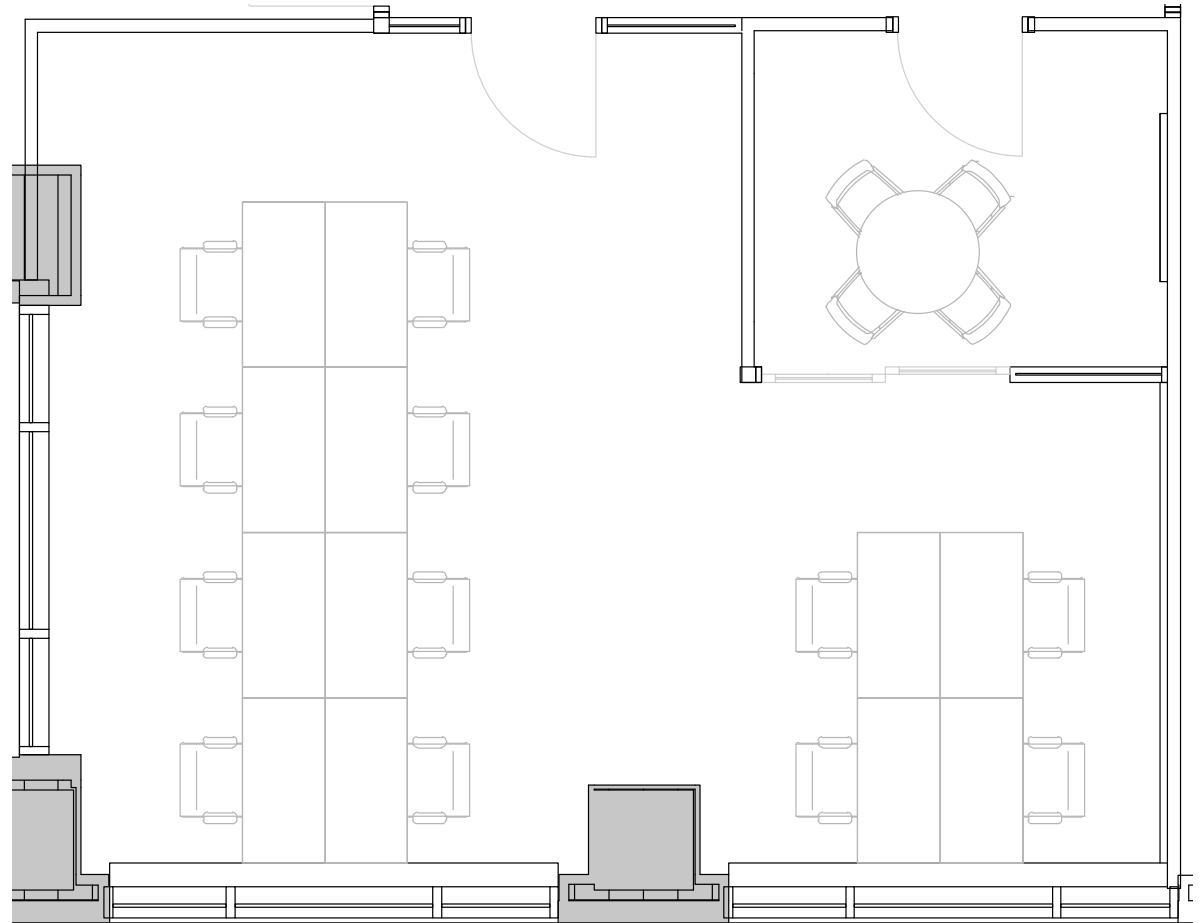
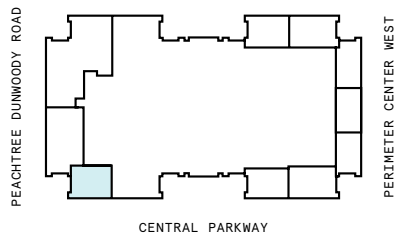




# Suite 133

11th Floor

1,169 RSF  
RENTABLE AREA



# Suite W134

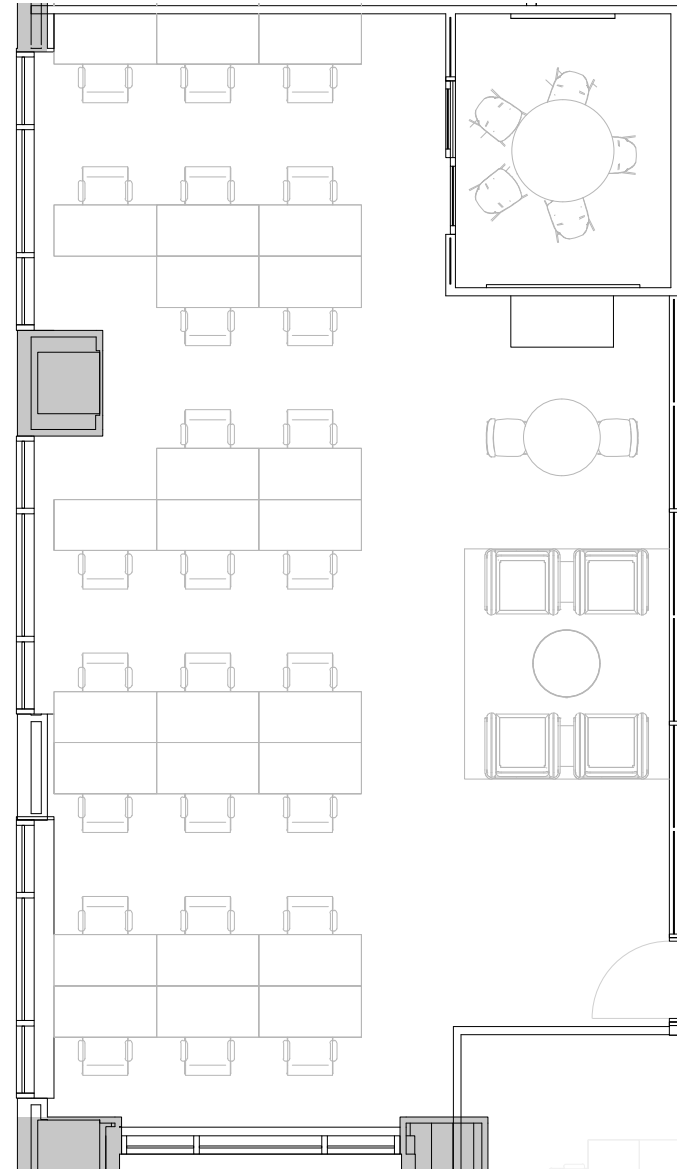
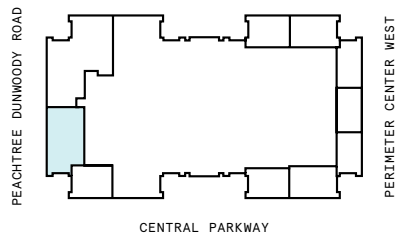
11th Floor

1

PRIVATE OFFICE(S)

2,216 RSF

RENTABLE AREA



# Suite W135

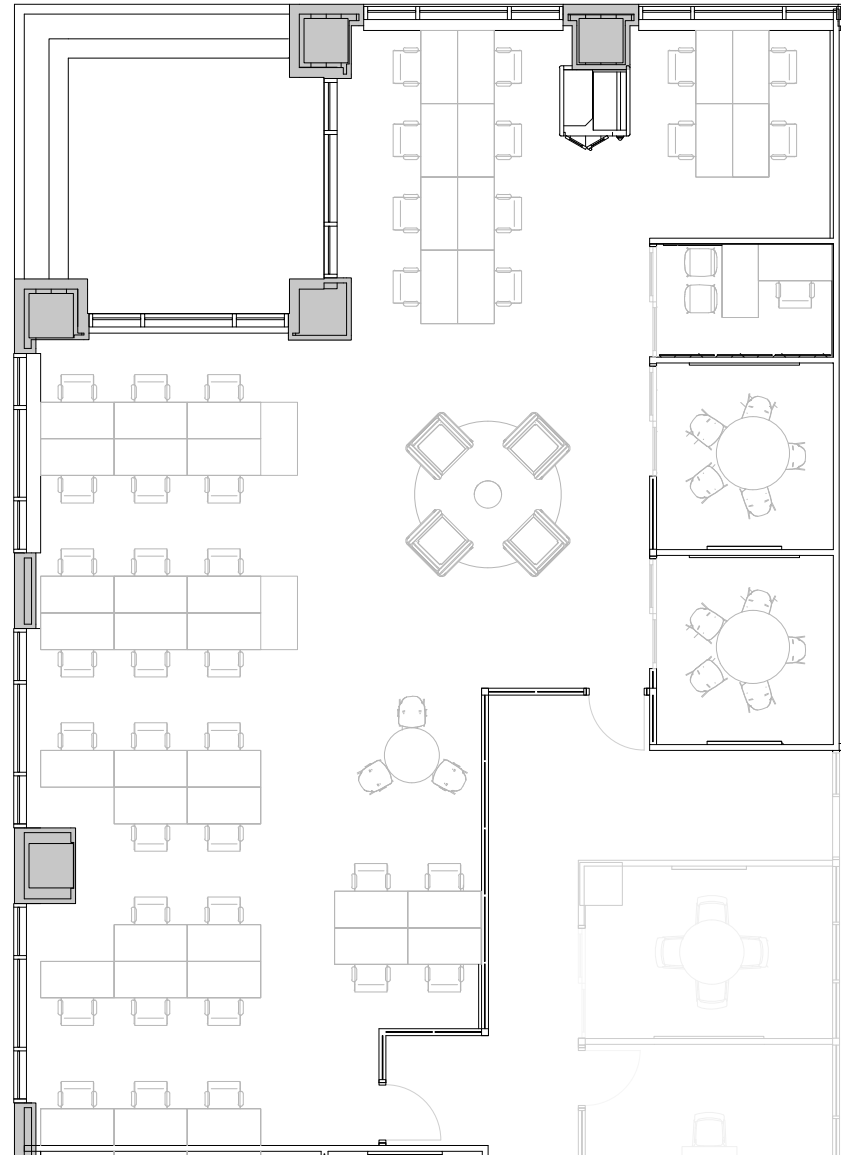
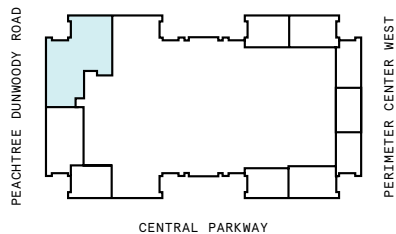
11th Floor

3

PRIVATE OFFICE(S)

4,081 RSF

RENTABLE AREA



# 12th Floor

25,227 RSF






5

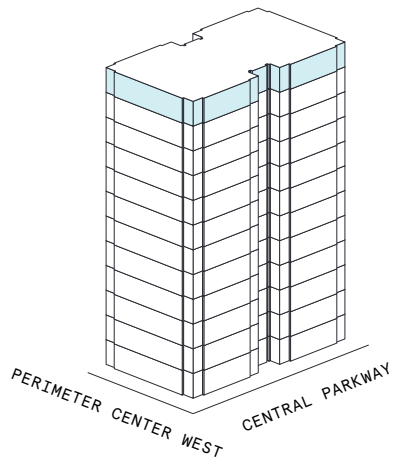
MEETING ROOM(S)

1

SHARED WORKSPACE(S)

## LEGEND

-  MEETING ROOM
-  SHARED WORKSPACE
-  DEDICATED SPACE



PEACHTREE DUNWOODY ROAD



PERIMETER CENTER WEST

CENTRAL PARKWAY



# Suite 108

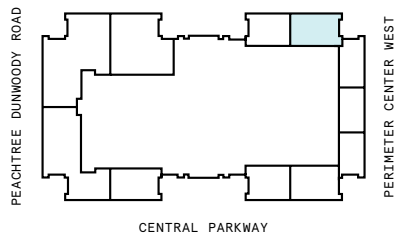
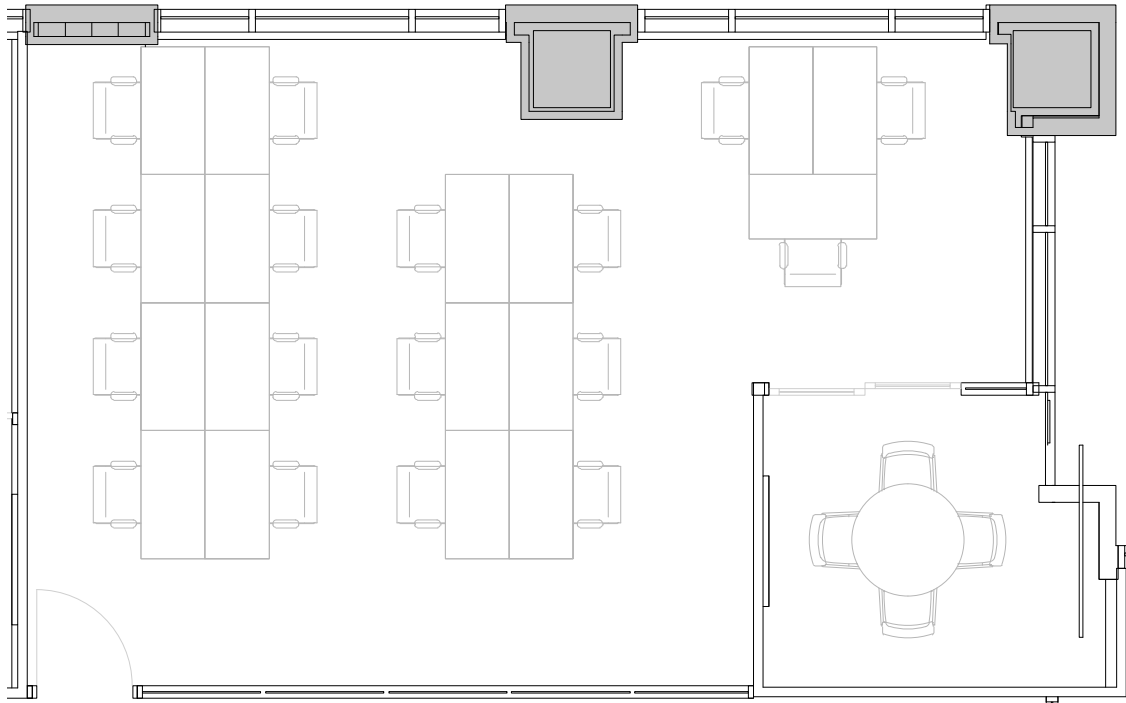
12th Floor

1

PRIVATE OFFICE(S)

1,403 RSF

RENTABLE AREA



# Suite 110

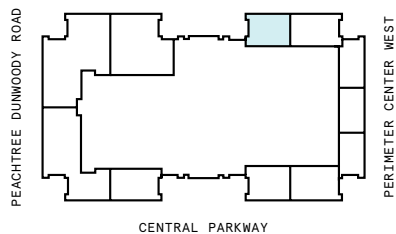
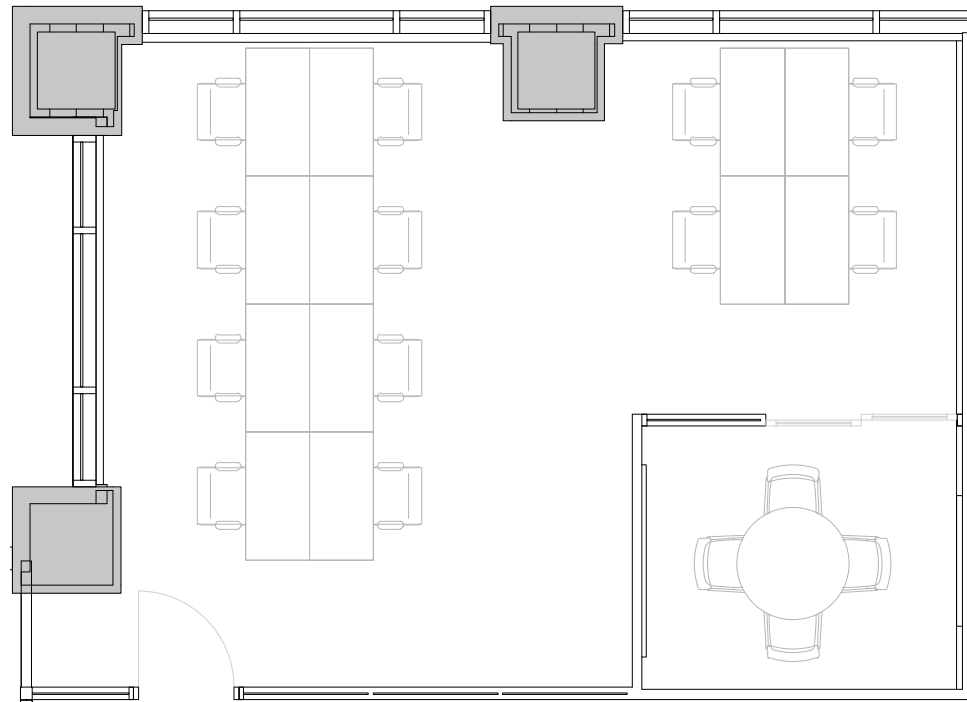
## 12th Floor

1

PRIVATE OFFICE(S)

1,403 RSF

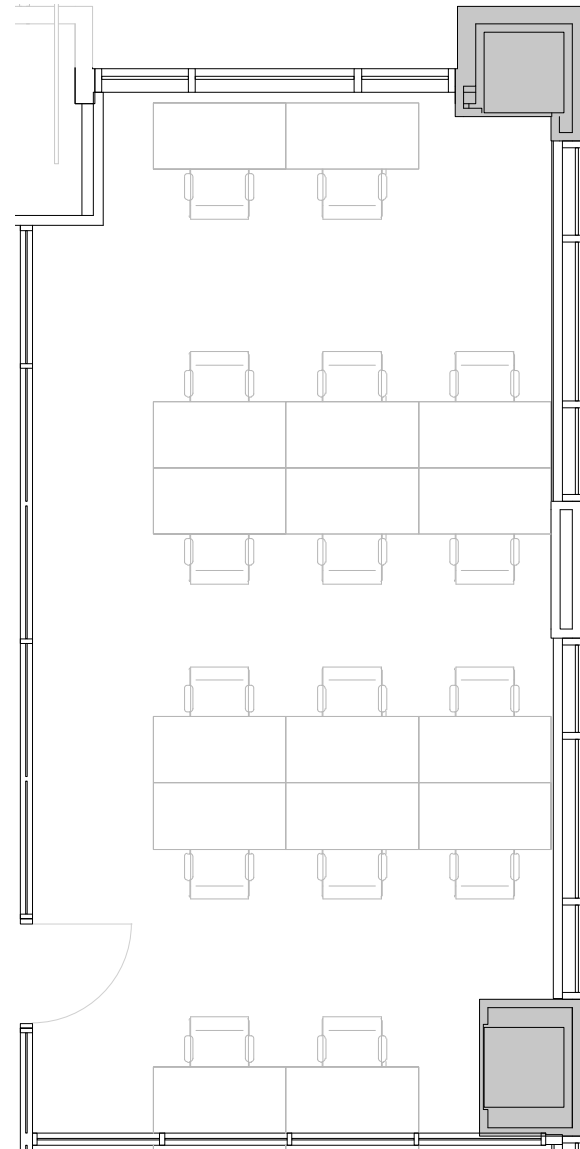
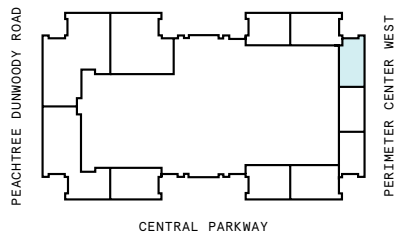
RENTABLE AREA



# Suite 111

12th Floor

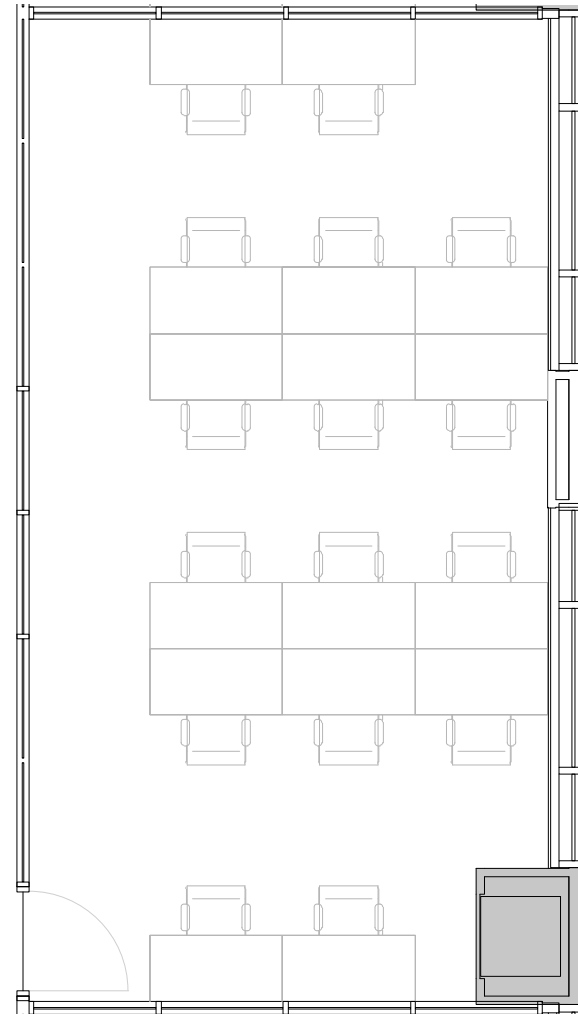
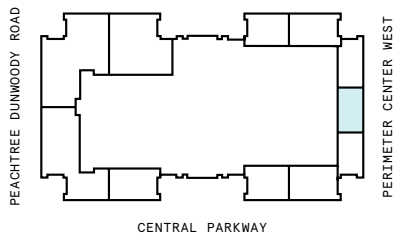
1,066 RSF  
RENTABLE AREA



# Suite 116

## 12th Floor

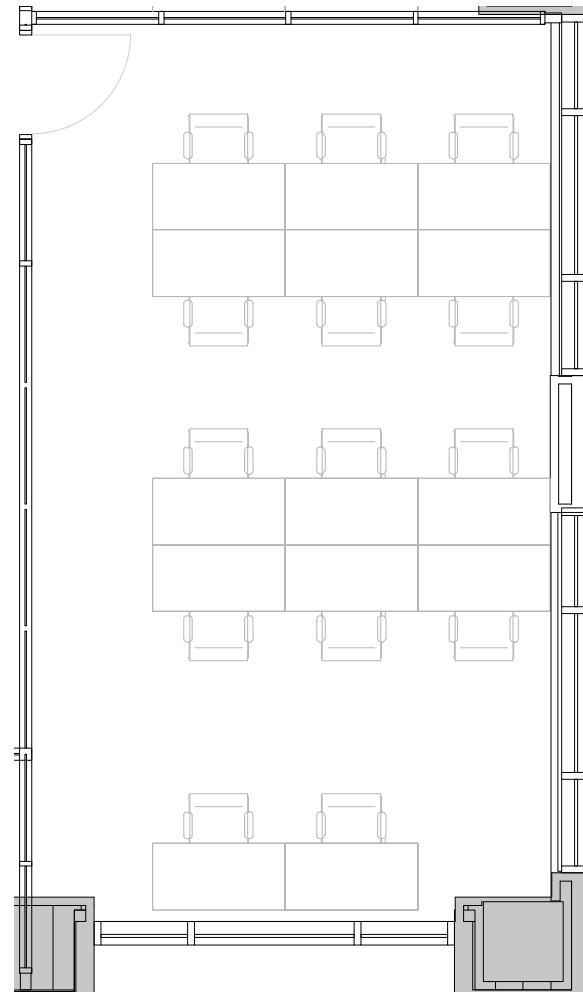
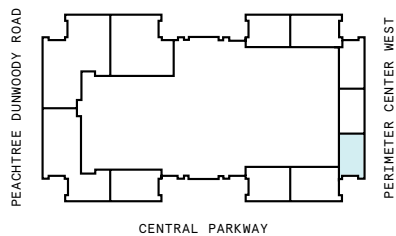
1,026 RSF  
RENTABLE AREA



# Suite 117

## 12th Floor

943 RSF  
RENTABLE AREA





# Suite 118

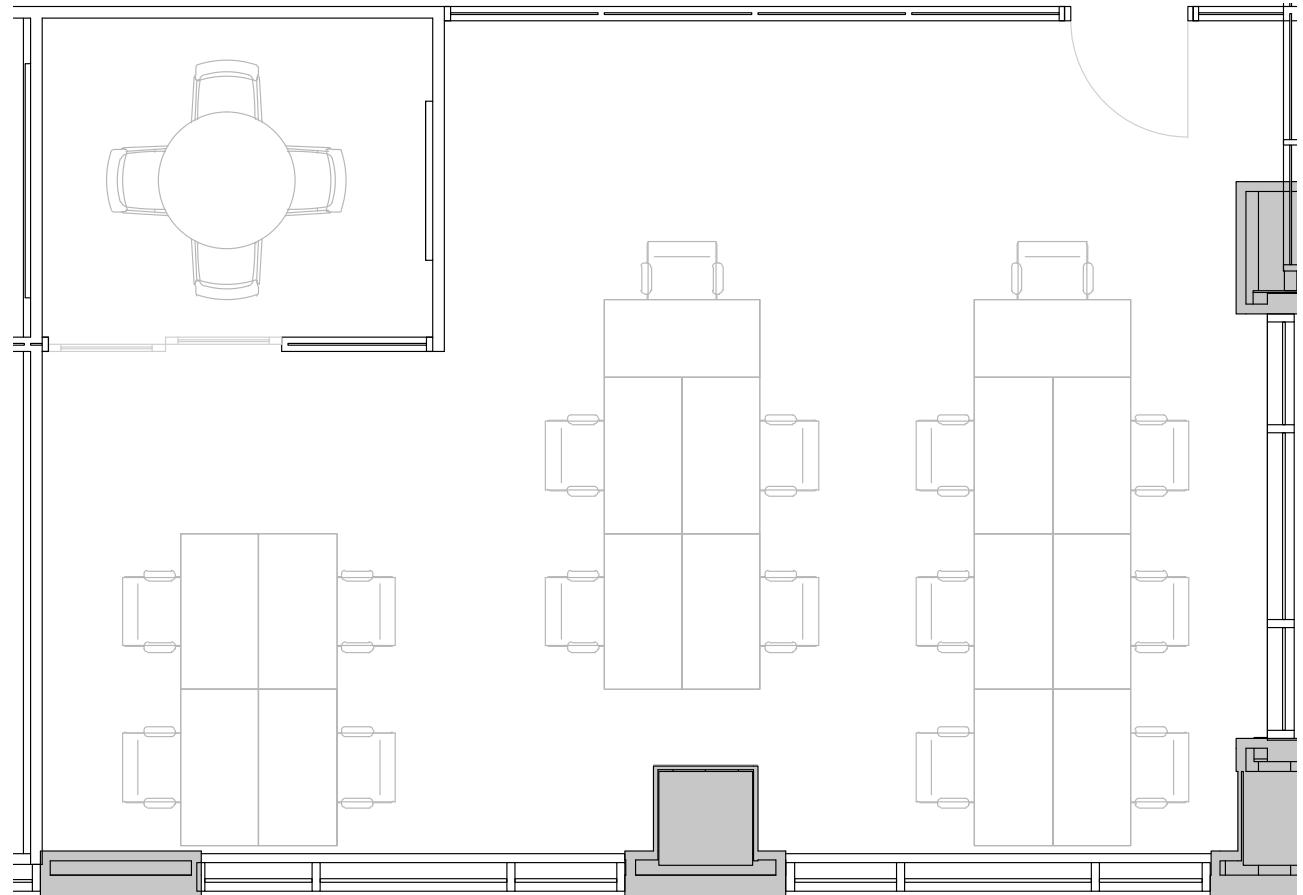
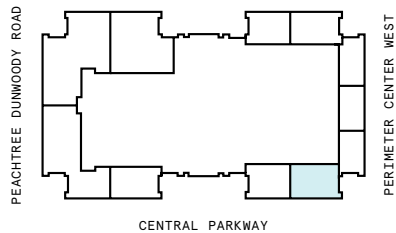
## 12th Floor

1

PRIVATE OFFICE(S)

1,468 RSF

RENTABLE AREA



# Suite 125

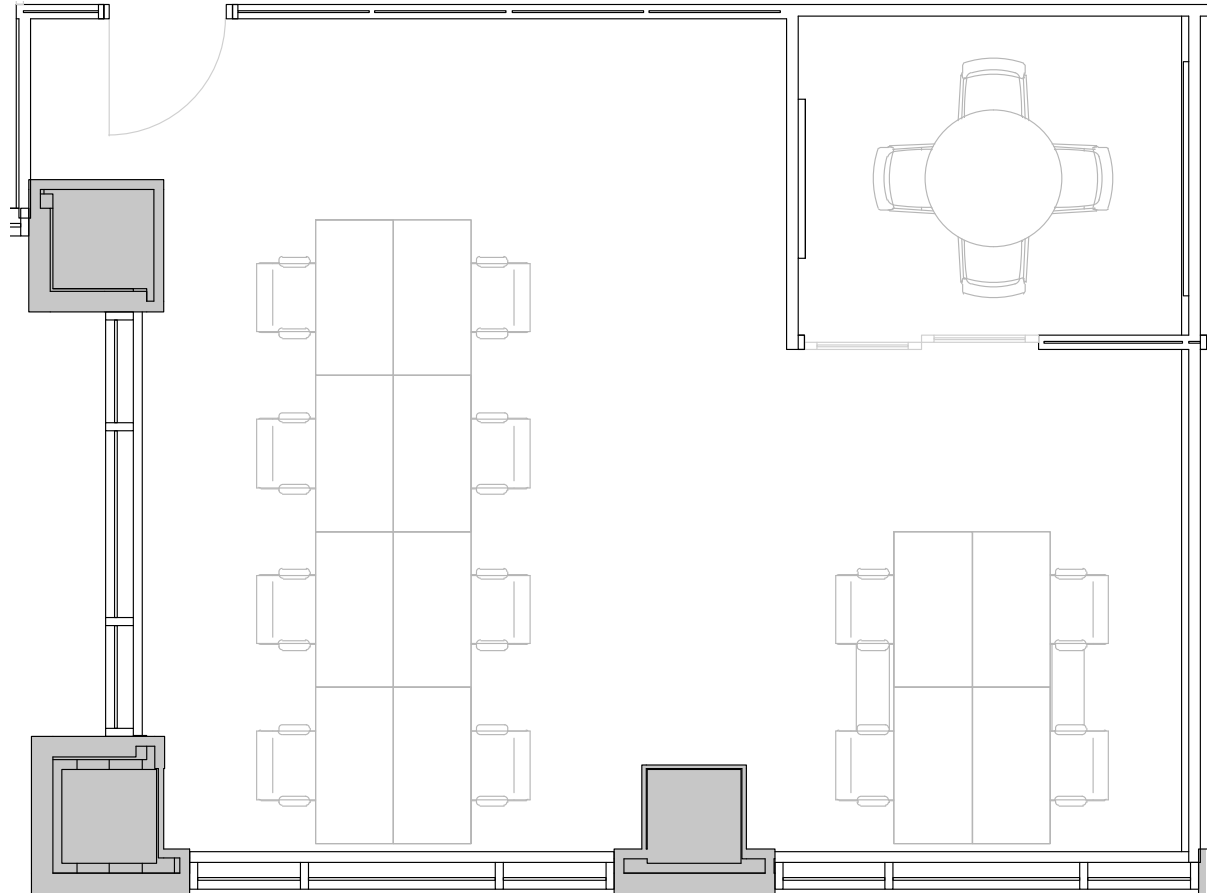
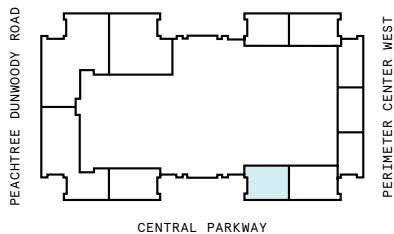
## 12th Floor

1

PRIVATE OFFICE(S)

1,282 RSF

RENTABLE AREA



# Suite 131

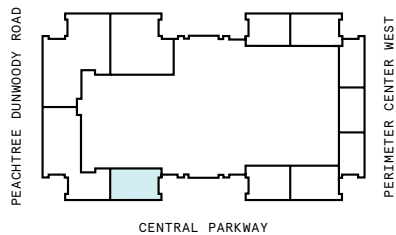
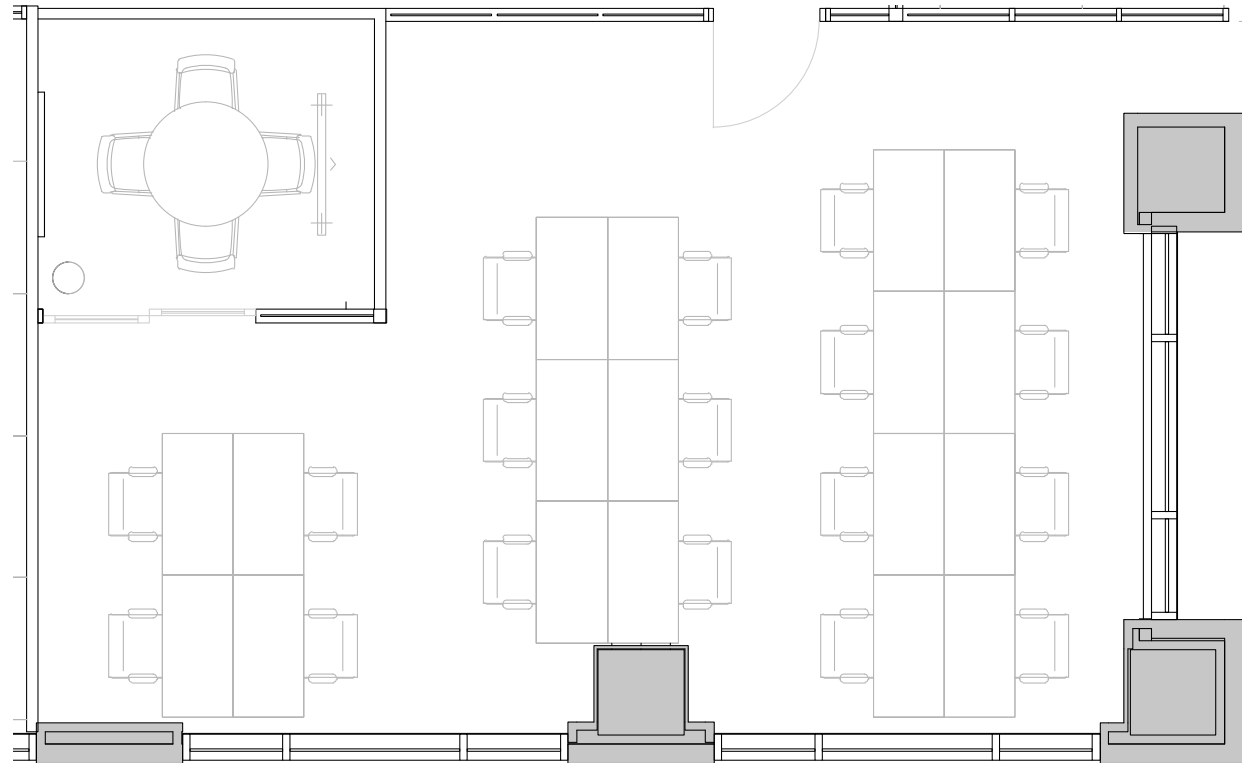
## 12th Floor

1

PRIVATE OFFICE(S)

1,404 RSF

RENTABLE AREA



# Suite W134

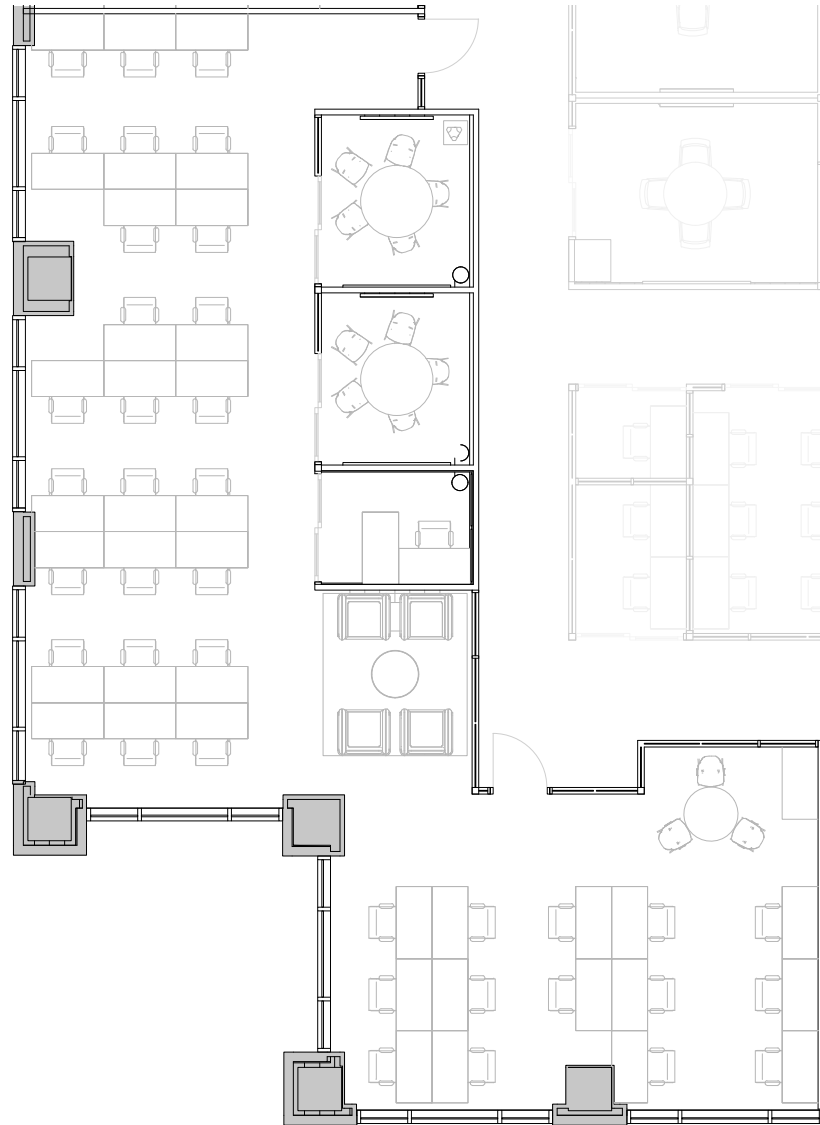
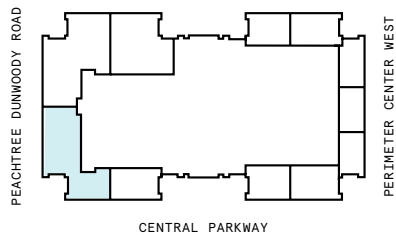
## 12th Floor

3

PRIVATE OFFICE(S)

3,375 RSF

RENTABLE AREA



# Suite W139

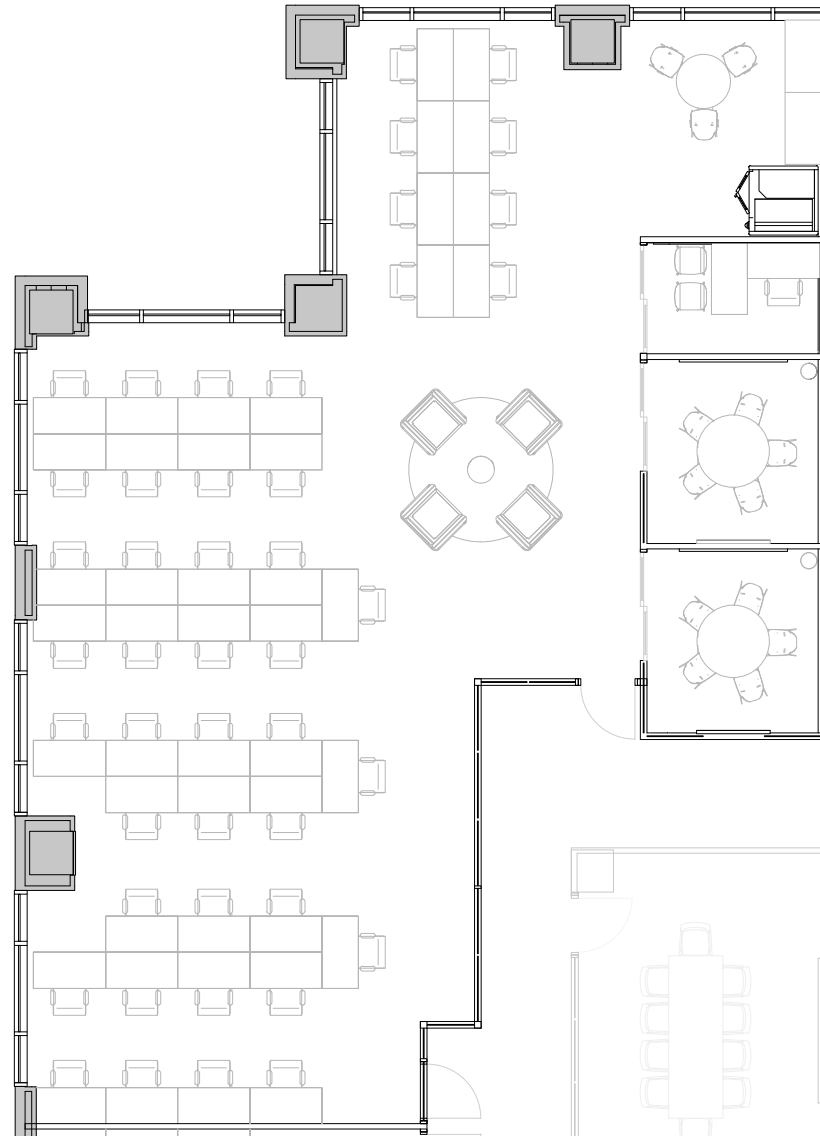
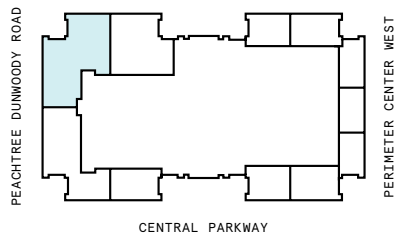
## 12th Floor

3

PRIVATE OFFICE(S)

3,375 RSF

RENTABLE AREA



# Suite W140

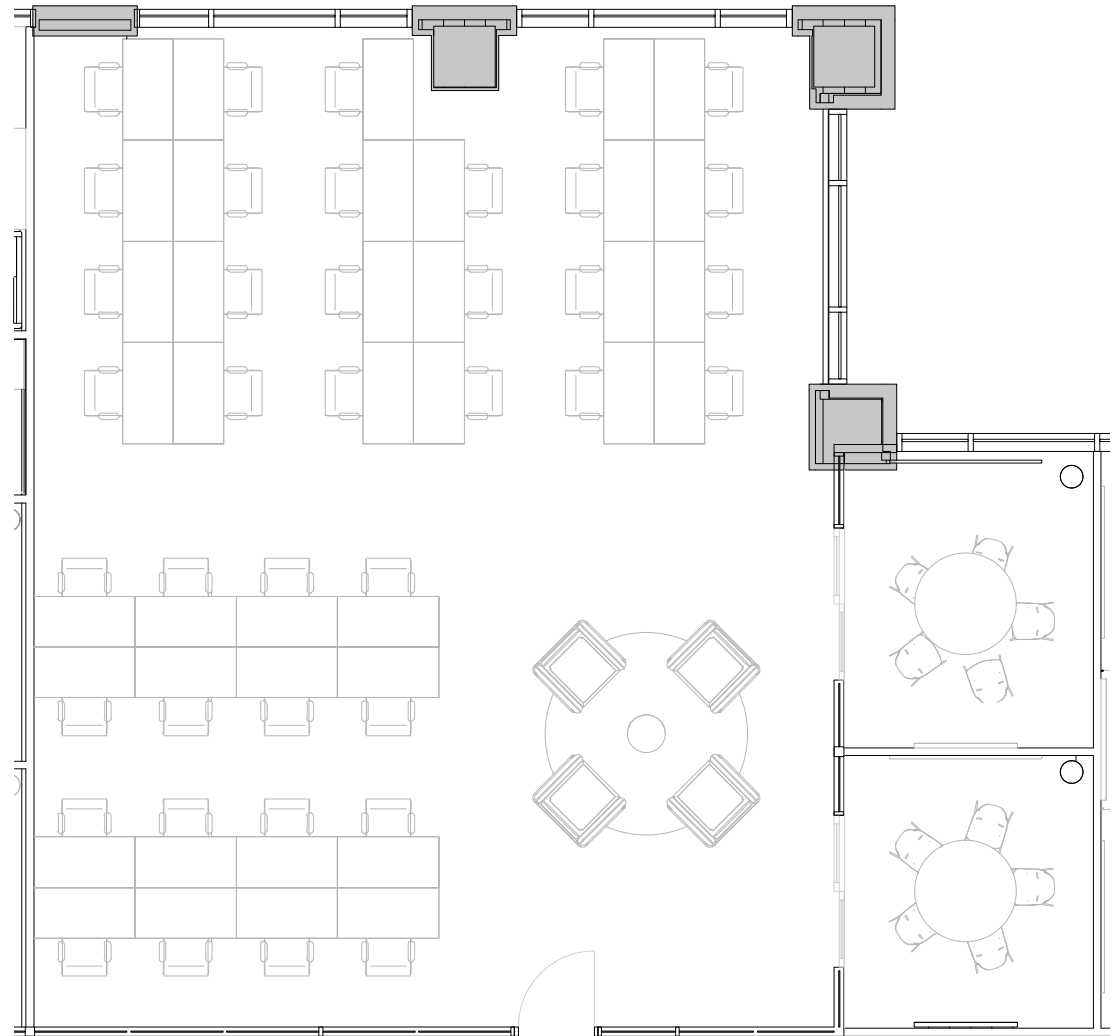
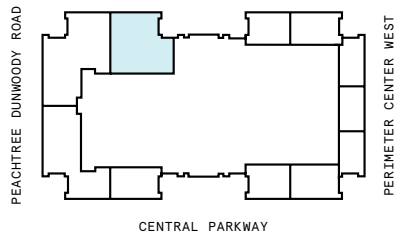
## 12th Floor

2

PRIVATE OFFICE(S)

3,221 RSF

RENTABLE AREA





# Contact

---

Complete the form [linked here](#) to book a tour or connect with one of our team members.



© 2023 WeWork. The WeWork trademark and related logos are the property of WeWork Companies LLC. Any reference to third-party names are for reference and informational purposes only and should not be considered an endorsement or association of WeWork or vice versa. Photographs contained herein may be representative examples of various WeWork locations and do not necessarily depict the WeWork location referenced. While reasonable efforts have been made to check the accuracy of the information contained here, WeWork, its officers, employees, directors, and representatives, make no warranty, express or implied, regarding the accuracy of the information and disclaim any liability arising from the use of the information contained herein. All dimensions are approximate and subject to variances. It is your obligation to independently verify the particulars of the property. WeWork reserves the right to make changes.